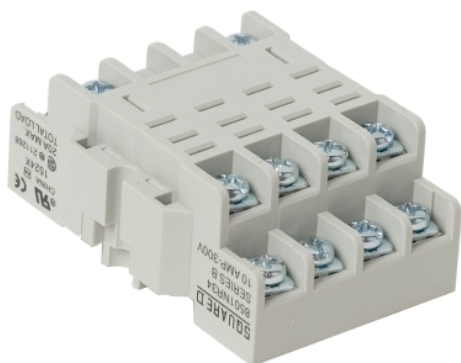




Product availability: Non-Stock - Not normally stocked in distribution facility



## Main

Product range	8501N
Product type	Relay Socket
Pin shape	Spade
Number of pins	14
[In] rated current	10 A 300 V AC

## Complementary

Electrical connection	Double tiered screw clamp terminals
Mounting type	Panel DIN rail
Package quantity	Set of 10

## Environment

Certifications	UL recognized CSA RoHS CE
Height	2.74 in (69.6 mm)
Width	1.98 in (50.3 mm)
Depth	1.09 in (27.7 mm)

## Ordering and shipping details

Category	21142 - 8501 N
Discount Schedule	CP2
GTIN	00785901218401
Package weight(Lbs)	0.08 kg (0.17 lb(US))
Returnability	No
Country of origin	CN

## Offer Sustainability

Sustainable offer status	Green Premium product
REACH Regulation	<a href="#">REACH Declaration</a>
REACH free of SVHC	Yes
EU RoHS Directive	Pro-active compliance (Product out of EU RoHS legal scope) <a href="#">EU RoHS Declaration</a>
Toxic heavy metal free	Yes
Mercury free	Yes
RoHS exemption information	<a href="#">Yes</a>
China RoHS Regulation	<a href="#">China RoHS Declaration</a>

---

Environmental Disclosure	<a href="#">Product Environmental Profile</a>
Circularity Profile	No need of specific recycling operations

---

**Contractual warranty**

---

Warranty	18 months
----------	-----------

---