

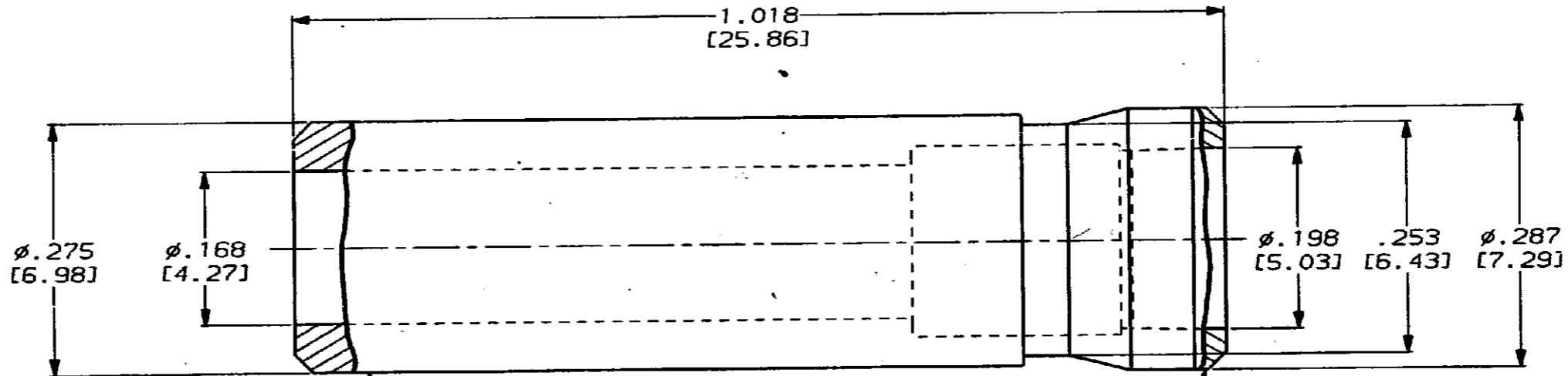
DRAWING MADE IN THIRD ANGLE PROJECTION

THIS DRAWING IS UNPUBLISHED. RELEASED FOR PUBLICATION  
BY AMP INCORPORATED. ALL INTERNATIONAL RIGHTS RESERVED.

PROD 4971  
LOC DF  
DIST AO

REVISIONS

ZONE	LTR	DESCRIPTION	DATE	APPD
0		RELEASED PER NPR 89-0318 TW	8-8-89	g-1



REDUCER BODY  
 MATL: LEADED COPPER  
 FINISH: .000015 MIN GOLD  
 PER MIL-G-45204 OVER .000040  
 MIN NICKEL PER QQ-N-290

END CAP  
 MATL: POLYPROPYLENE

446744-1

PART NO

1. DIMENSIONS IN BRACKETS ARE IN MILLIMETERS. METRIC EQUIVALENTS ARE BASED UPON 1.00 INCH = 25.4 mm.

DO NOT SCALE PRINT. UNLESS SPECIFIED DIMENSIONS IN INCHES (mm)	DR: 7-24-89 C.C. THOMAS
TOLERANCES ON: 2 PL DEC ± .005 (0.13) 3 PL DEC ± .005 (0.13) ANGLES ±	CHK: <i>Stuyvesant</i> 8-11-89
MATERIAL SEE CALLOUTS	APPD: <i>[Signature]</i>
FINISH SEE CALLOUTS	PRODUCT SPEC
	APPLICATION SPEC
	WEIGHT

AMP

AMP INCORPORATED  
Harrisburg, Pa. 17105

NAME  
SOCKET CAVITY  
REDUCER; ARINC 600,  
SIZE 5 TO SIZE 12

SIZE	FSCM NO	DRAWING NO
<b>B</b>	00779	446744
SCALE	8:1	SHEET
		1 OF 1

CUSTOMER DRAWING