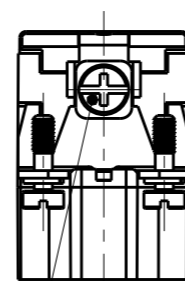
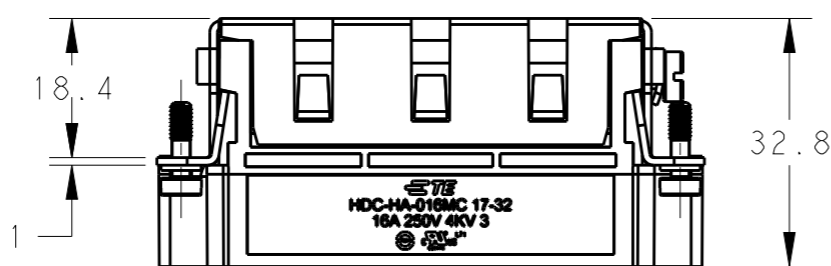
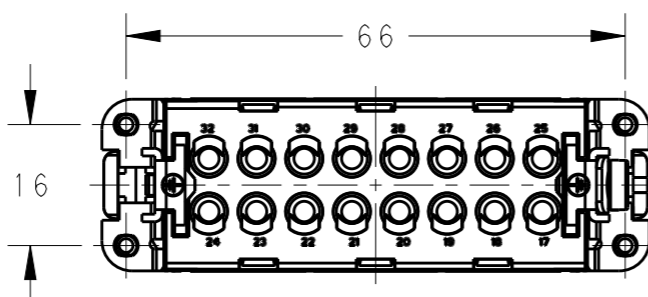
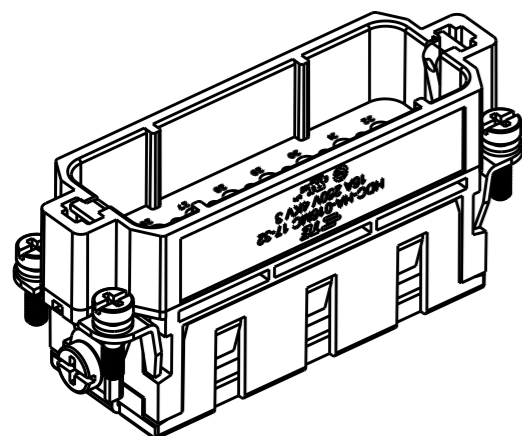


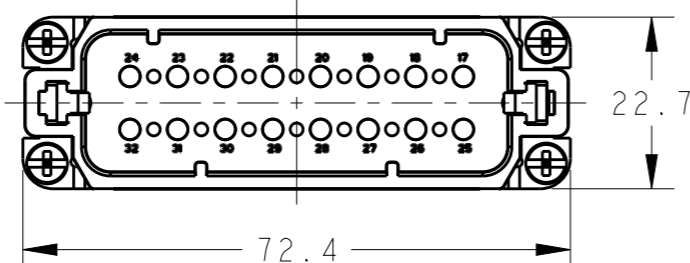
REVISIONS

P	LTR	DESCRIPTION	DATE	DWN	APVD
	A	INITIAL	25Jan2015	DW	CW

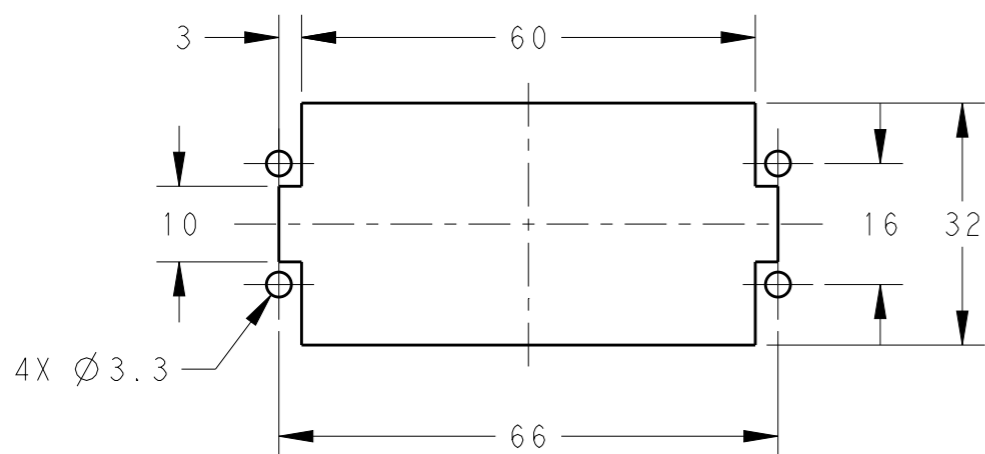


M4 SCREW
RECOMMENDED

4X M3 SCREW, RECOMMENDING TIGHTENING TORQUE 1.2Nm
TIGHTENING TORQUE 0.5Nm



PANEL CUT FOR INSERTS FOR USE
WITHOUT HOODS/ HOUSINGS




NOTES:

- TECHNICAL CHARACTERISTICS:
INSULATION MATERIAL: PC
RATED VOLTAGE: 250 V
RATED CURRENT: 16 A
INSULATION RESISTANCE: $\geq 400M\Omega$
RATED IMPULSE VOLTAGE: 4 KV
POLLUTION DEGREE: 3
FLAMMABILITY: UL94V-0
MATING CYCLES: 500 CYCLES
OPERATION TEMPERATURE: $-40+125^{\circ}C$
WIRE RANGE: 0.14-4 mm² (26-12 AWG)
CONTACT TYPE: CRIMP CONTACT
- CONTACT NEED TO BE ORDERED SEPARATELY.
(ORDER No. REFER TO DRAWING: T20300X10XX000)

注释:

- 技术参数:
绝缘材料: PC
额定电压: 250V
额定电流: 16A
绝缘电阻: $\geq 400M\Omega$
额定脉冲电压: 4 KV
污染等级: 3
阻燃等级: UL94V-0
插拔次数: 500次
工作温度: $-40+125^{\circ}C$
接线范围: 0.14-4 mm² (26-12 AWG)
接线类型: 冷压接
- 端子需要单独订购.
(订货号参考图面: T20300X10XX000)

HA-016-MC 17-32	T2010324101-000
DESCRIPTION	PART NUMBER

THIS DRAWING IS A CONTROLLED DOCUMENT.		DWN 22Jan2015 David Wang	 TE Connectivity	
DIMENSIONS: mm		CHK 22Jan2015 Chris Wang		
TOLERANCES UNLESS OTHERWISE SPECIFIED:		APVD 22Jan2015 Xiang Xu	NAME HA-016-MC 17-32	
0 PLC \pm -		PRODUCT SPEC 108-137045	SIZE A3	
1 PLC \pm -		APPLICATION SPEC 114-137045	CAGE CODE 00779	DRAWING NO T2010324101000
2 PLC \pm -		MATERIAL -	RESTRICTED TO -	
3 PLC \pm -		FINISH -	SCALE 1:1	
4 PLC \pm -		Customer Drawing	SHEET 1 OF 1	
ANGLES \pm -			REV A	