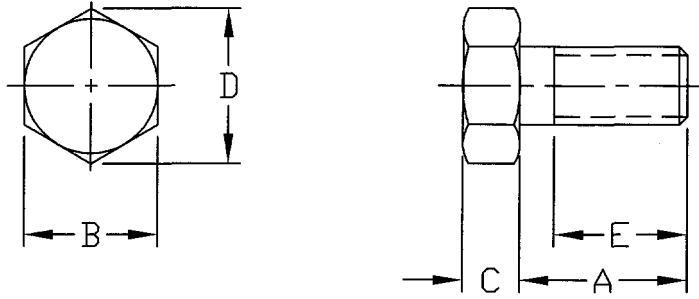


1. PART NUMBER AND CHARACTERISTICS



TE Part No	Rev	Thread	A	B	C	D	E
18022-1	B	M5	8	8	3.5	8.79	8
18022-2	B	M5	10	8	3.5	8.79	10
18022-3	B	M5	12	8	3.5	8.79	12
18022-4	B	M5	16	8	3.5	8.79	16
18022-5	B	M5	20	8	3.5	8.79	16
18022-6	B	M5	25	8	3.5	8.79	16
18022-7	B	M5	30	8	3.5	8.79	16
18022-8	B	M5	40	8	3.5	8.79	16
18022-9	B	M5	50	8	3.5	8.79	16
1-18022-0	B	M6	10	10	4	11.05	10
1-18022-1	B	M6	12	10	4	11.05	12
1-18022-2	B	M6	16	10	4	11.05	16
1-18022-3	A	M6	20	10	4	11.05	18
1-18022-4	A	M6	25	10	4	11.05	18
1-18022-5	A	M6	30	10	4	11.05	18
1-18022-6	A	M6	40	10	4	11.05	18
1-18022-7	A	M6	50	10	4	11.05	18
1-18022-8	A	M6	60	10	4	11.05	18
1-18022-9	A	M6	70	10	4	11.05	18
2-18022-0	B	M8	16	13	5.3	14.38	16
2-18022-1	B	M8	20	13	5.3	14.38	20
2-18022-2	B	M8	25	13	5.3	14.38	22
2-18022-3	B	M8	30	13	5.3	14.38	22
2-18022-4	B	M8	40	13	5.3	14.38	22
2-18022-5	B	M8	50	13	5.3	14.38	22

<b>COMMERCIAL ITEM SPECIFICATION</b>			MATERIAL							
			See Note 1.2.							
© 2010 Tyco Electronics Corporation, Berwyn, PA All Rights Reserved			FINISH		<b>18022</b>					
			Black Oxide							
REV Add -55      JNB      11NOV10 ENGINEERING CHANGE      CHK      DATE					DIMENSIONS IN mm		NO	REV	LOC	DIST
							<b>18022</b>	<b>G</b>	<b>B</b>	<b>31</b>
			SHEET 1 OF 2		TITLE					
					<b>SCREW, CAP, HEX HEAD, METRIC SERIES</b>					

1. PART NUMBER AND CHARACTERISTICS (Continued)

TE Part No	Rev	Thread	A	B	C	D	E
2-18022-6	B	M8	60	13	5.3	14.38	22
2-18022-7	B	M8	70	13	5.3	14.38	22
2-18022-8	B	M8	80	13	5.3	14.38	22
2-18022-9	B	M8	90	13	5.3	14.38	22
3-18022-0	B	M10	16	16	6.4	17.77	16
3-18022-1	B	M10	20	16	6.4	17.77	20
3-18022-2	B	M10	25	16	6.4	17.77	25
3-18022-3	B	M10	30	16	6.4	17.77	26
3-18022-4	B	M10	40	16	6.4	17.77	26
3-18022-5	B	M10	50	16	6.4	17.77	26
3-18022-6	B	M10	60	16	6.4	17.77	26
3-18022-7	B	M10	70	16	6.4	17.77	26
3-18022-8	B	M10	80	16	6.4	17.77	26
3-18022-9	B	M10	90	16	6.4	17.77	26
4-18022-0	B	M10	100	16	6.4	17.77	26
4-18022-1	B	M12	20	18	7.5	20.03	20
4-18022-2	B	M12	25	18	7.5	20.03	25
4-18022-3	B	M12	30	18	7.5	20.03	30
4-18022-4	B	M12	40	18	7.5	20.03	30
4-18022-5	B	M12	50	18	7.5	20.03	30
4-18022-6	B	M12	60	18	7.5	20.03	30
4-18022-7	B	M12	70	18	7.5	20.03	30
4-18022-8	B	M12	80	18	7.5	20.03	30
4-18022-9	B	M12	90	18	7.5	20.03	30
5-18022-0	B	M12	100	18	7.5	20.03	30
5-18022-1	B	M3	16	5.5	2	6.01	12
5-18022-2	C	M4	8	7	2.8	7.66	8
5-18022-3	D	M4	12	7	2.8	7.66	12
5-18022-4	F	M3	6	5.5	2	6.01	6
5-18022-5	G	M4	6	7	2.8	7.66	6

- 1.1. Shall comply with DIN 931/933 and ISO 4014/4017
- 1.2. Material shall be carbon steel that meets or exceeds ISO Standard 898/1, Class 8.8
- 2. MANUFACTURER  
None



Tyco Electronics  
Corporation  
Berwyn, PA

SHEET  
2 OF 2

NO

**18022**

REV  
**G**

LOC  
**B**

DIST  
**31**