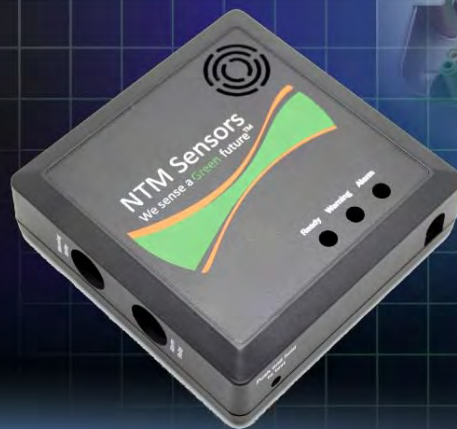
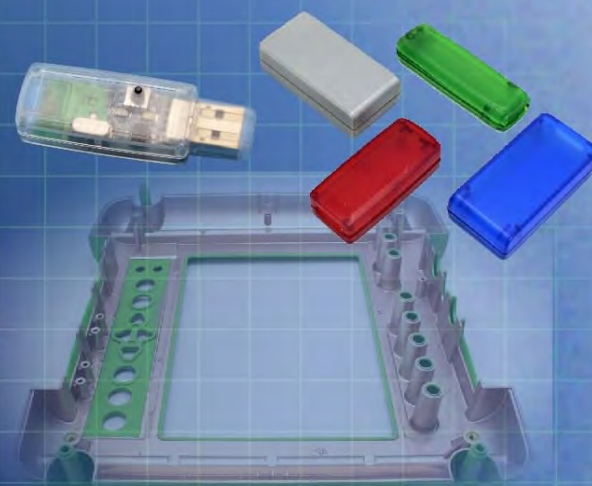


Ordering a market-ready enclosure® is made fast and affordable with our complete in-house capabilities. New Age provides machined openings to fit your PCB, pad printing for your graphics, custom enclosures, custom colors, final assembly, testing and fulfillment services to save you additional time and money. Ask your representative for a free quote today 805-595-1310.

## ***Fast and Affordable Customization***

**CNC Modifications  
Pad Printing  
Colored Resins  
EMI/RF Shielding  
Custom Enclosure  
Assembly & Testing**



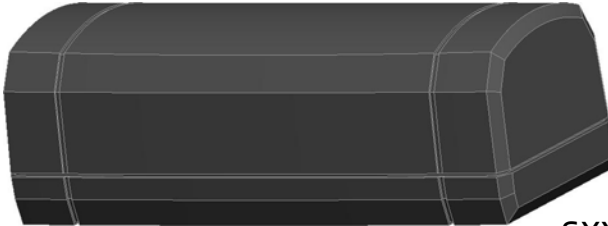
ISO quality  
off-the-shelf  
to market-ready®

# **NEW AGE ENCLOSURES**

[www.NewAgeEnclosures.com](http://www.NewAgeEnclosures.com)

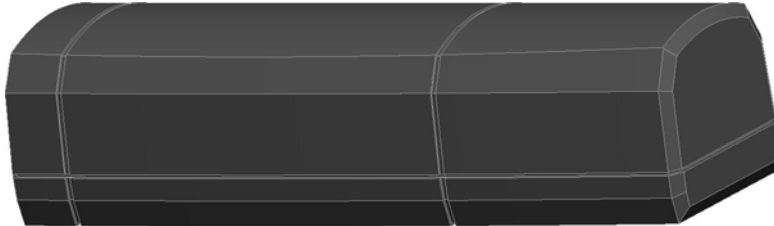
4330 Santa Fe Road • San Luis Obispo, CA 93401 • T 805.595.1310 • F 805.595.1024

**SXX-301210**  
**3" DONGLE**  
 MOLD USING 2 SHORT ENDS  
 INCLUDES 4 #4 x 3/8" ASSEMBLY SCREWS



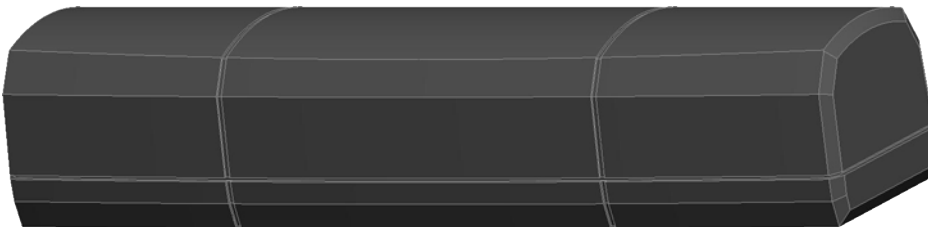
SCALE 1.000

**SXX-401210**  
**4" DONGLE**  
 MOLD USING 1 SHORT & 1 LONG END  
 INCLUDES 4 #4 x 3/8" ASSEMBLY SCREWS



SCALE 1.000

**SXX-501210**  
**5" DONGLE**  
 MOLD USING 2 LONG ENDS  
 INCLUDES 4 #4 x 3/8" ASSEMBLY SCREWS



SCALE 1.000

THIS ENCLOSURE IS MOLDED WITH A "SHORT" OR "LONG" END ON EITHER HALF. THE DETAILS ON THE FOLLOWING SHEET SHOW THE 4" VERSION SINCE IT'S MOLDED WITH ONE LONG END AND ONE SHORT END.

| R E V I S I O N |          |        |   |           |          |
|-----------------|----------|--------|---|-----------|----------|
| REV.            | DRAWN BY | ECO No | DESCRIPTION                               | DATE      | APPROVED |
| 1               | M BOYER  |        | PRELIMINARY RELEASE                       | 09-Apr-08 | D.C.     |
| 2               | M BOYER  | 2408   | UPDATE TO AS BUILT AND B.O.M. INFORMATION | 17-Jul-08 | D.C.     |
| 2.1             | M BOYER  | 0710   | UPDATE FORMAT                             | 05-Mar-10 | D.C.     |
| 3.0             | M BOYER  | 1610   | REMOVE EXTRA ASSEMBLY SCREW HOLES         | 01-Jun-10 | D.C.     |
| 4.0             | M BOYER  | 3110   | INCREASE HEIGHT OF RETAINING RIBS ON BASE | 26-Aug-10 | D.C.     |
| 5.0             | M BOYER  | 5410   | INCREASE DRAFT ON END OF BASE TO 2°       | 14-Dec-10 | D.C.     |
| 5.1             | M BOYER  | 3712   | MODIFY NOTE ON PG 5                       | 22-Oct-12 | D.C.     |
| 5.2             | M BOYER  | 2013   | UPDATE AS-BUILT TEXTURE INFORMATION       | 22-Apr-13 | D.C.     |

**S(X)01210 CONFIGURATIONS**

|                     | 3" | 4" | 5" |
|---------------------|----|----|----|
| S301210 COVER       | 1  |    |    |
| S301210 BASE        | 1  |    |    |
| S401210 COVER       |    | 1  |    |
| S401210 BASE        |    | 1  |    |
| S501210 COVER       |    |    | 1  |
| S501210 BASE        |    |    | 1  |
| #4 HiLo SCREW .375" | 4  | 4  | 4  |

NOTES: UNLESS OTHERWISE SPECIFIED

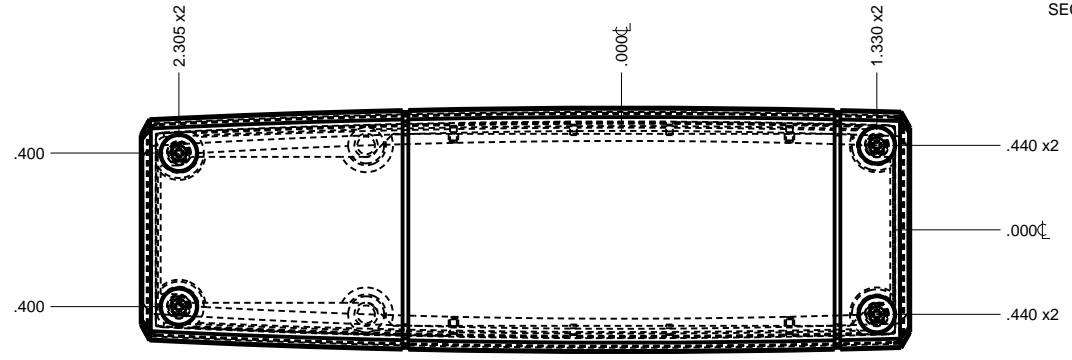
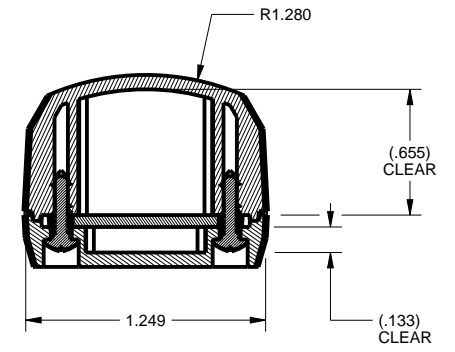
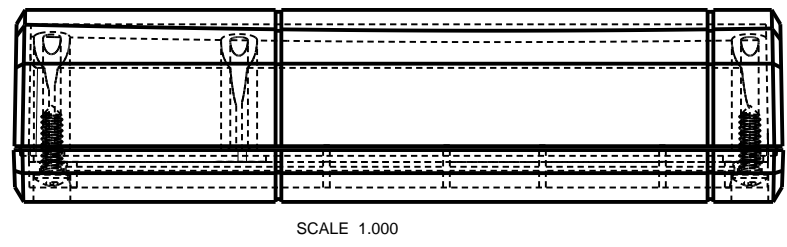
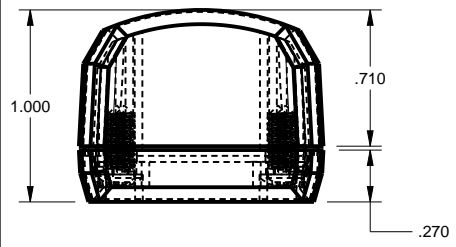
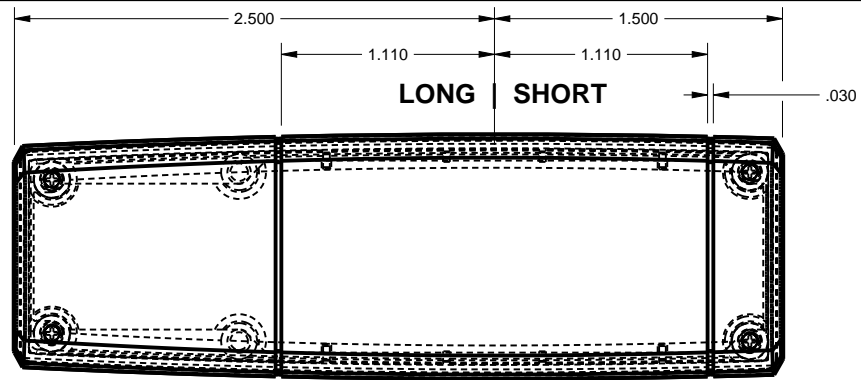
- CORNERS DRAWN SHARP TO BE R.005 MAXIMUM.
- EXTERIOR SURFACE TEXTURE TO BE LIGHT EDM FINISH. EQUIVELANT TO MT-11020.
- INTERIOR SURFACE TEXTURE TO BE: NONE.
- ALL INSIDE RADII .010R. ALL OUTSIDE RADII .020R MAX, UNLESS OTHERWISE SPECIFIED.
- ALL EXTERNAL DIMENSIONS AFFECTED BY THE DRAFT APPLY AT THE LARGE END OF THE FEATURE, AND ALL INTERNAL FEATURES AFFECTED BY THE DRAFT APPLY AT THE SMALL END OF THE FEATURE UNLESS OTHERWISE SPECIFIED.
- 1 DEGREE DRAFT IN THE DIRECTION OF PULL IS PERMISSIBLE UNLESS OTHERWISE SPECIFIED.
- MATERIAL / COLOR: ABS PLASTIC IS STANDARD IN BLACK OR WHITE. CUSTOM MATERIALS AND COLORS ARE AVAILABLE UPON REQUEST FOR QUOTE.
- PCB SIZES ARE RECOMMENDATIONS ONLY. FINAL SIZES AND VERIFICATION OF IT'S FIT ARE THE SOLE RESPONSIBILITY OF EACH O.E.M.
- ASSEMBLY SCREWS FOR THE ENCLOSURE INCLUDED. MOUNTING SCREWS ARE UNNECESSARY WITH PCB CAPTURE DESIGN.
- THIS DRAWING IS BASED ON A SOLID MODEL, AND IS FURTHER DEFINED BY THE SOLID MODEL FILE.
- ALLOWABLE FLASH: 0.010 MAX.

|  |   |   |
|--|---|---|
| THIRD ANGLE PROJECTION<br><br>DO NOT SCALE DRAWING           | TOLERANCES: UNLESS OTHERWISE SPECIFIED<br>DIMENSIONS ARE IN U.S. INCHES.<br>X.XX = .015 X.XXXX = .001<br>X.XXX = .010 X.X° = 1° | <b>NEW AGE ENCLOSURES</b><br>4330 Santa Fe Road San Luis Obispo, CA. 93401<br>ph. (805) 595-1310 fax (805) 595-1024<br><a href="http://www.newageenclosures.com">www.newageenclosures.com</a> |
|  | <b>NEW AGE ENCLOSURES</b><br>Customer's Part No: (X)01210   |   |
| APPROVAL BY DATE<br>CHECK _____<br>ENG. _____<br>SCALE _____ | STANDARD - DONGLE<br><b>SXX-X01210 ASSEMBLY</b>   | SHEET 1 OF 6<br>REV.DOC 5.2   |
| DRAWN BY M BOYER<br>DATE 09-Apr-08                           | SIZE A<br>DRAWING NAME SX01210_RS_2   |   |

| ITEM | DESCRIPTION             | MATERIAL       | COLOR          | QTY. |
|------|-------------------------|----------------|----------------|------|
| 4    | X01210 COVER - STANDARD | ABS            | BLACK or WHITE | 1    |
| 3    | X01210 BASE - STANDARD  | ABS            | BLACK or WHITE | 1    |
| 2    | HiLo #4 x 3/8"          | STEEL          | .375" LONG     | 4    |
| 1    | X01210 PCB              | REFERENCE ONLY | .062" THICK    | 1    |

**BILL OF MATERIALS**

NOTICE: THE INFORMATION AND DATA CONTAINED HEREIN IS CONSIDERED PROPRIETARY TO ALLTEC INTEGRATED MFG INC & SHALL REMAIN THE EXCLUSIVE PROPERTY OF ALLTEC INTEGRATED MFG INC. THE HOLDER WILL ASSUME CUSTODY AND CONTROL THAT THIS DOCUMENT WILL NOT BE COPIED, REPRODUCED, OR DISCLOSED WITHOUT THE EXPRESS WRITTEN CONSENT OF ALLTEC INTEGRATED MFG INC. POSSESSION OF THIS DOCUMENT DOES NOT CONSTITUTE A GRANT TO MANUFACTURE ANY ITEMS.  
 © 2012



**NOTE:**  
 4" DONGLE SHOWN TO REPRESENT  
 1 LONG END & 1 SHORT END CONFIGURATION.

FOR THE 3" & 5" VERSIONS,  
 MATCHING ENDS SHOULD BE USED.

TOLERANCES: UNLESS OTHERWISE SPECIFIED  
 DIMENSIONS ARE IN U.S. INCHES.  
 X.XX = .015 X.XXXX = .001  
 X.XXX = .010 X.X° = 1°

NEW AGE ENCLOSURES  
 Customer's Part No: (X)01210

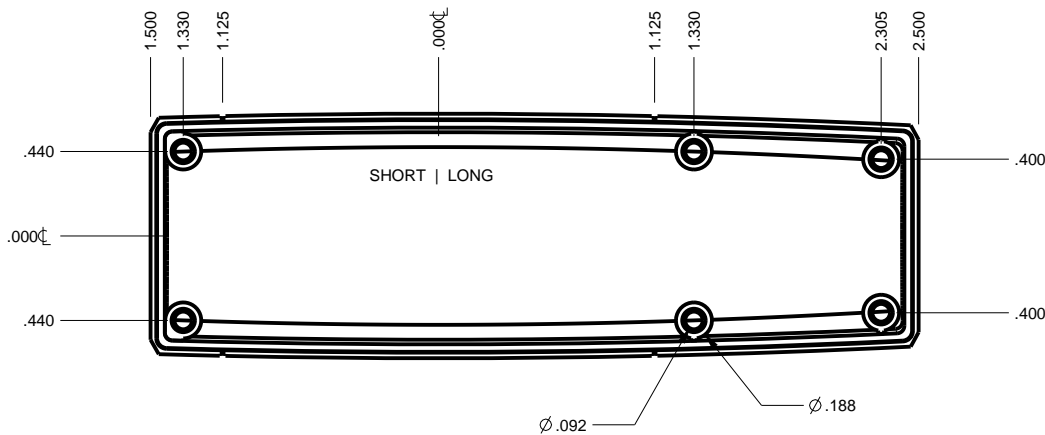
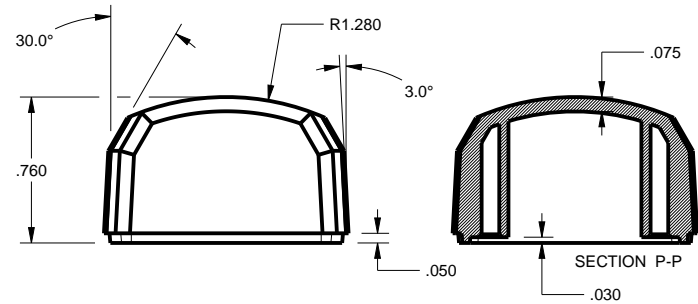
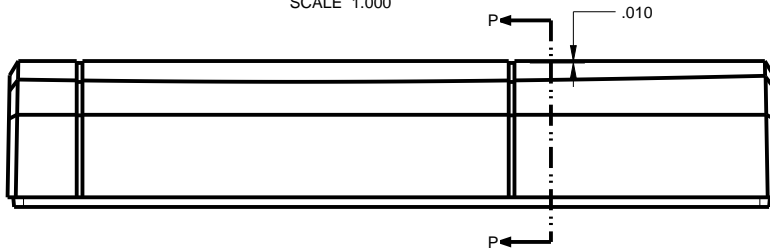
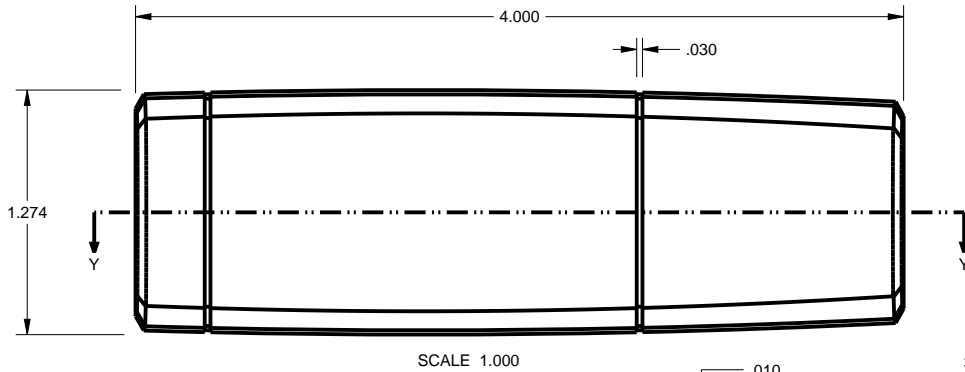
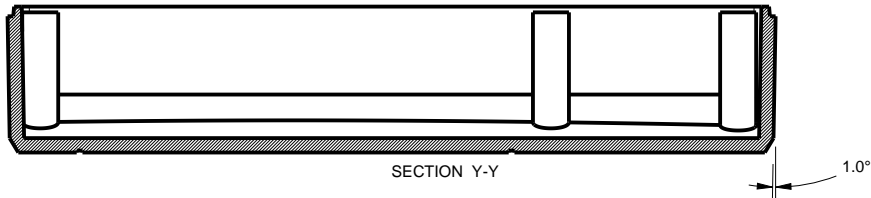
|          |    |      |
|----------|----|------|
| APPROVAL | BY | DATE |
| CHECK    |    |      |
| ENG.     |    |      |
| SCALE    |    |      |

DRAWN BY  
 M BOYER 09-Apr-08

**NEW AGE ENCLOSURES**  
 4330 Santa Fe Road San Luis Obispo, CA. 93401  
 ph. (805) 595-1310 fax (805) 595-1024  
[www.newageenclosures.com](http://www.newageenclosures.com)

**STANDARD - DONGLE  
 SXX-X01210 ASSEMBLY**

|           |                              |                 |                |
|-----------|------------------------------|-----------------|----------------|
| SIZE<br>A | DRAWING NAME<br>SX01210_RS_2 | SHEET<br>2 OF 6 | REV.DOC<br>5.2 |
|-----------|------------------------------|-----------------|----------------|



TOLERANCES: UNLESS OTHERWISE SPECIFIED  
DIMENSIONS ARE IN U.S. INCHES.  
X.XX = .015 X.XXXX = .001  
X.XXX = .010 X.X° = 1°

NEW AGE ENCLOSURES

Customer's Part No: (X)01210

|          |    |      |
|----------|----|------|
| APPROVAL | BY | DATE |
| CHECK    |    |      |
| ENG.     |    |      |
| SCALE    |    |      |

DRAWN BY  
M BOYER

09-Apr-08

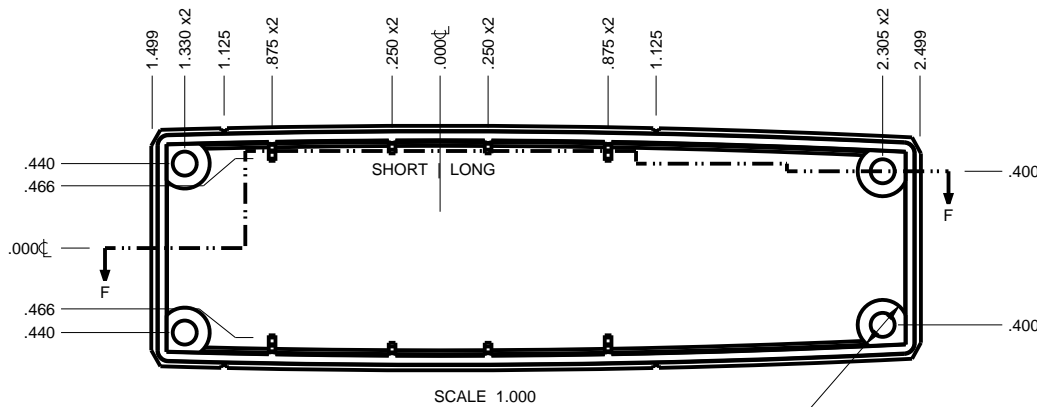
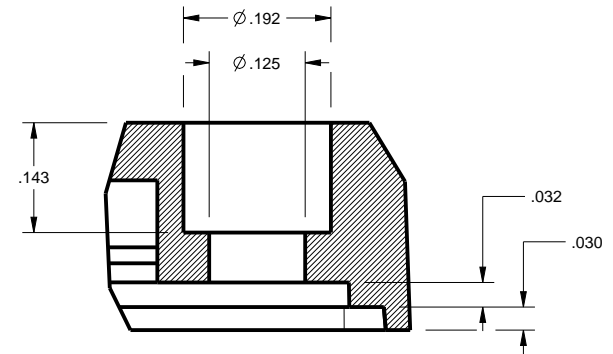
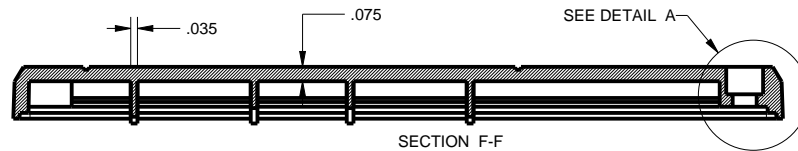
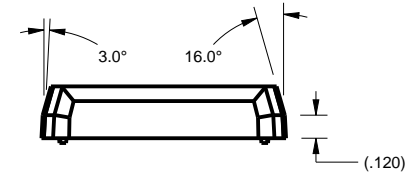
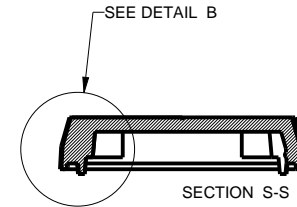
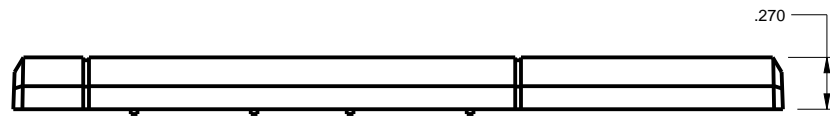
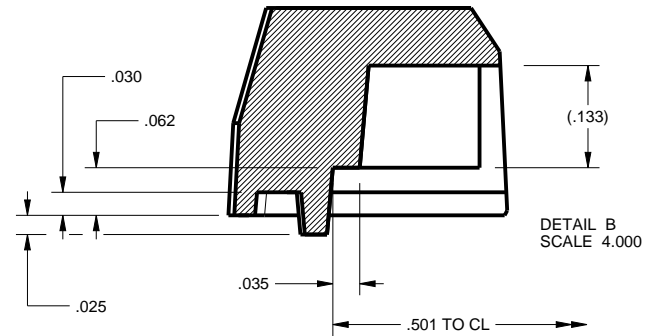
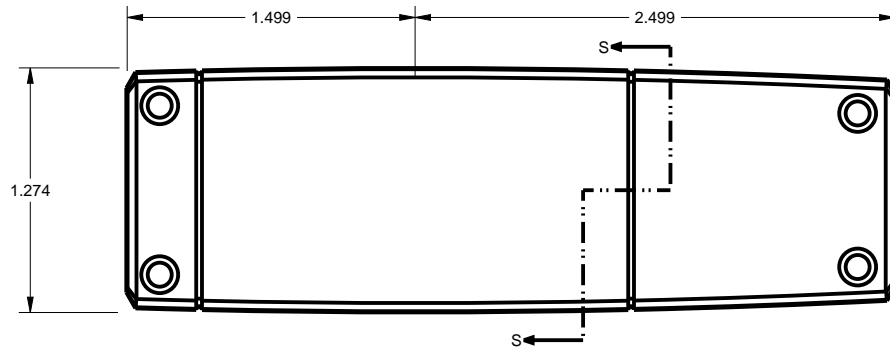
**NEW AGE ENCLOSURES**

4330 Santa Fe Road San Luis Obispo, CA. 93401  
ph. (805) 595-1310 fax (805) 595-1024  
[www.newageenclosures.com](http://www.newageenclosures.com)

**STANDARD - DONGLE  
SXX-X01210 ASSEMBLY**

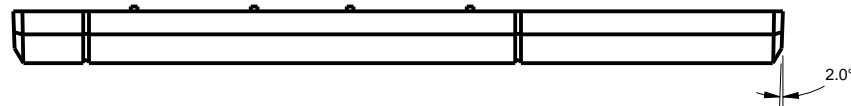
SIZE A DRAWING NAME SX01210\_R5\_2

SHEET 3 OF 6 REV.DOC 5.2



SCALE 1.000

Ø .260



TOLERANCES: UNLESS OTHERWISE SPECIFIED  
DIMENSIONS ARE IN U.S. INCHES.  
X.XX = .015 X.XXXX = .001  
X.XXX = .010 X.X° = 1°

NEW AGE ENCLOSURES

Customer's Part No: (X)01210

|          |    |      |
|----------|----|------|
| APPROVAL | BY | DATE |
| CHECK    |    |      |
| ENG.     |    |      |
| SCALE    |    |      |

DRAWN BY  
M BOYER 09-Apr-08

**NEW AGE ENCLOSURES**

4330 Santa Fe Road San Luis Obispo, CA. 93401  
ph. (805) 595-1310 fax (805) 595-1024  
[www.newageenclosures.com](http://www.newageenclosures.com)

**STANDARD - DONGLE  
SXX-X01210 ASSEMBLY**

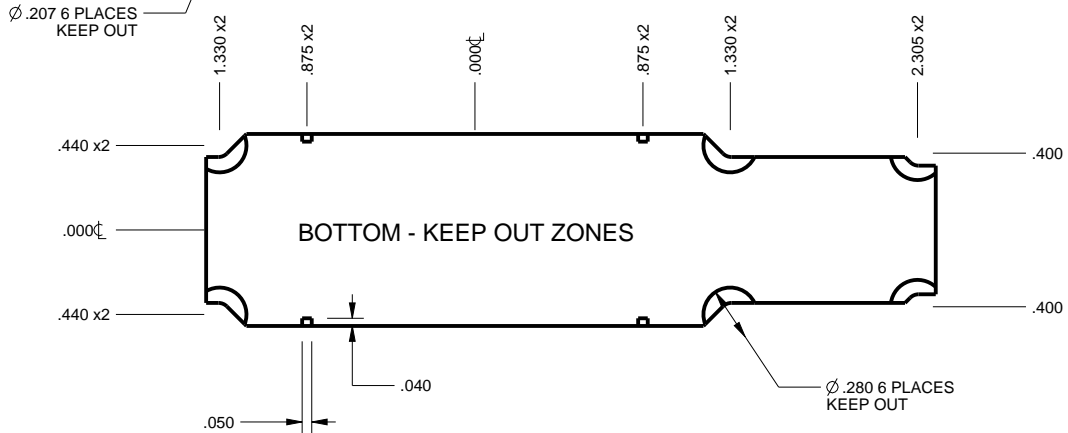
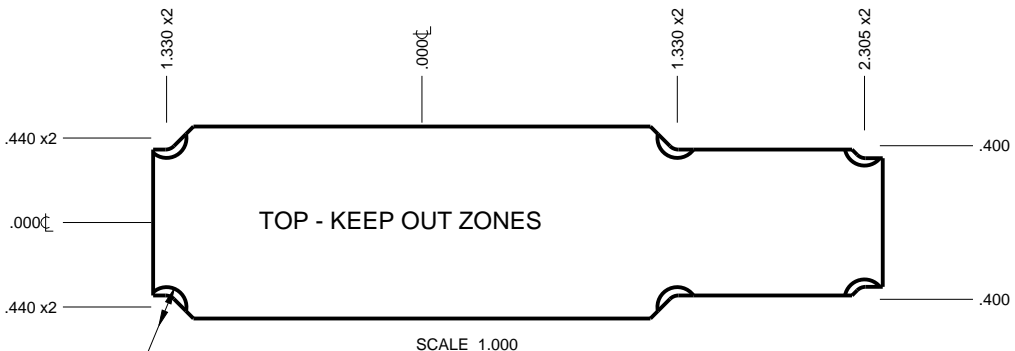
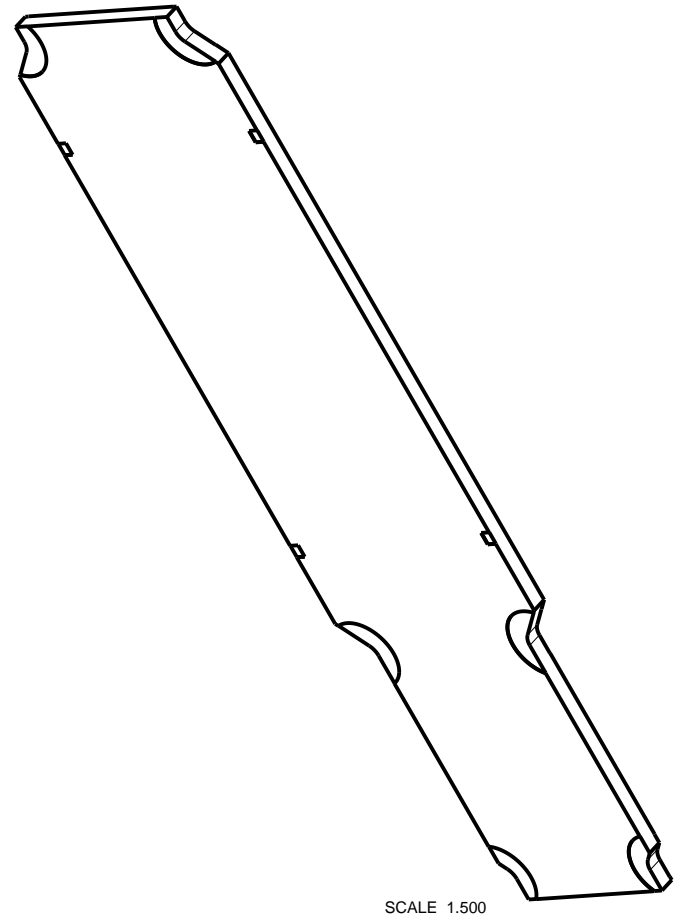
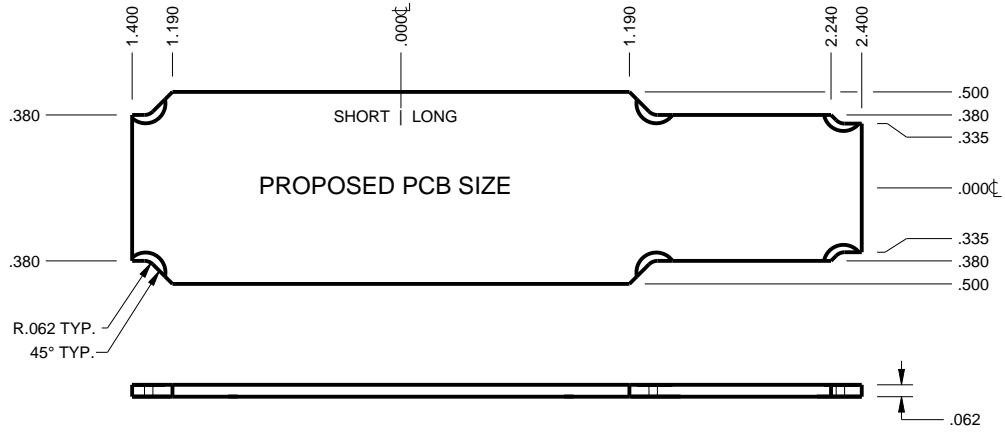
SIZE A DRAWING NAME SX01210\_R5\_2

SHEET 4 OF 6 REV.DOC 5.2



(X)01210 PCB - CUSTOMER SUPPLIED

PCB SIZES ARE RECOMMENDATIONS ONLY. FINAL SIZES AND VERIFICATION OF IT'S FIT ARE THE SOLE RESPONSIBILITY OF THE OEM.



TOLERANCES: UNLESS OTHERWISE SPECIFIED DIMENSIONS ARE IN U.S. INCHES.  
 X.XX = .015 X.XXXX = .001  
 X.XXX = .010 X.X° = 1°

NEW AGE ENCLOSURES  
 Customer's Part No: (X)01210

|          |    |      |
|----------|----|------|
| APPROVAL | BY | DATE |
| CHECK    |    |      |
| ENG.     |    |      |
| SCALE    |    |      |

**NEW AGE ENCLOSURES**  
 4330 Santa Fe Road San Luis Obispo, CA. 93401  
 ph. (805) 595-1310 fax (805) 595-1024  
[www.newageenclosures.com](http://www.newageenclosures.com)

**STANDARD - DONGLE  
 SXX-X01210 ASSEMBLY**

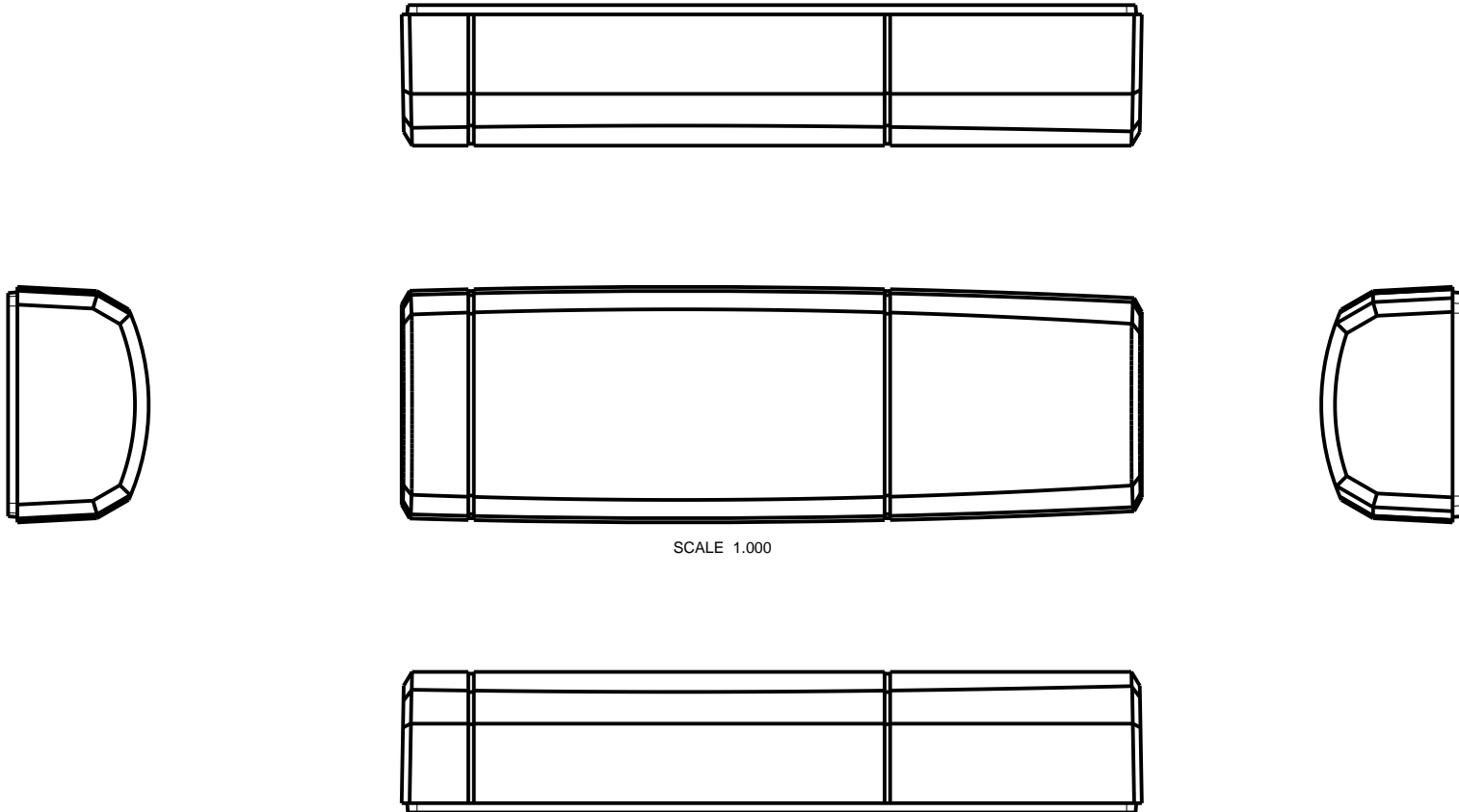
DRAWN BY  
 M BOYER 09-Apr-08

SIZE A DRAWING NAME SX01210\_RS\_2

SHEET 5 OF 6 REV.DOC 5.2

## 2nd OPERATION DETAILS

NEW AGE ENCLOSURES DELIVERS YOUR ENCLOSURE MARKET-READY WITH IN-HOUSE  
CNC MACHINING, PAD PRINTING, ASSEMBLY, AND FULFILLMENT.  
ALL SURFACES AND AREAS ARE AVAILABLE FOR CNC ALTERATION BY NEW AGE ENCLOSURES  
CALL (805) 595-1310 FOR PRICING AND SCHEDULE.  
THE INSIDE RADIUS OF ANY MACHINED FEATURES SHOULD BE NO SMALLER THAN .031"



SCALE 1.000

TOLERANCES: UNLESS OTHERWISE SPECIFIED  
DIMENSIONS ARE IN U.S. INCHES.  
X.XX = .015 X.XXXX = .001  
X.XXX = .010 X.X° = 1°

NEW AGE ENCLOSURES

Customer's Part No: (X)01210

**NEW AGE ENCLOSURES**

4330 Santa Fe Road San Luis Obispo, CA. 93401  
ph. (805) 595-1310 fax (805) 595-1024

[www.newageenclosures.com](http://www.newageenclosures.com)

**STANDARD - DONGLE  
SXX-X01210 ASSEMBLY**

| SXX-X01210-XXX COVER - ABS, BLACK |             |               |         |             |         |
|-----------------------------------|-------------|---------------|---------|-------------|---------|
| STEP NO                           | DESCRIPTION | CUTTER        | FIXTURE | ORIENTATION | PROGRAM |
| 1                                 | -           | T2 = .062" EM | 178     | -           |         |
| 2                                 | -           | T2 = .062" EM | 178     | -           |         |
| 3                                 | -           | T2 = .062" EM | 178     | -           |         |

|          |           |      |
|----------|-----------|------|
| APPROVAL | BY        | DATE |
| CHECK    |           |      |
| ENG.     |           |      |
| SCALE    |           |      |
| DRAWN BY | 09-Apr-08 |      |
| M BOYER  |           |      |

|      |              |        |         |
|------|--------------|--------|---------|
| SIZE | DRAWING NAME | SHEET  | REV.DOC |
| A    | SX01210_R5_2 | 6 OF 6 | 5.2     |

# Mouser Electronics

Authorized Distributor

Click to View Pricing, Inventory, Delivery & Lifecycle Information:

[New Age Enclosures:](#)

[S3A-301210](#) [S1A-501210](#) [S1A-301210](#) [S3A-501210](#) [S3A-401210](#) [S1A-401210](#)