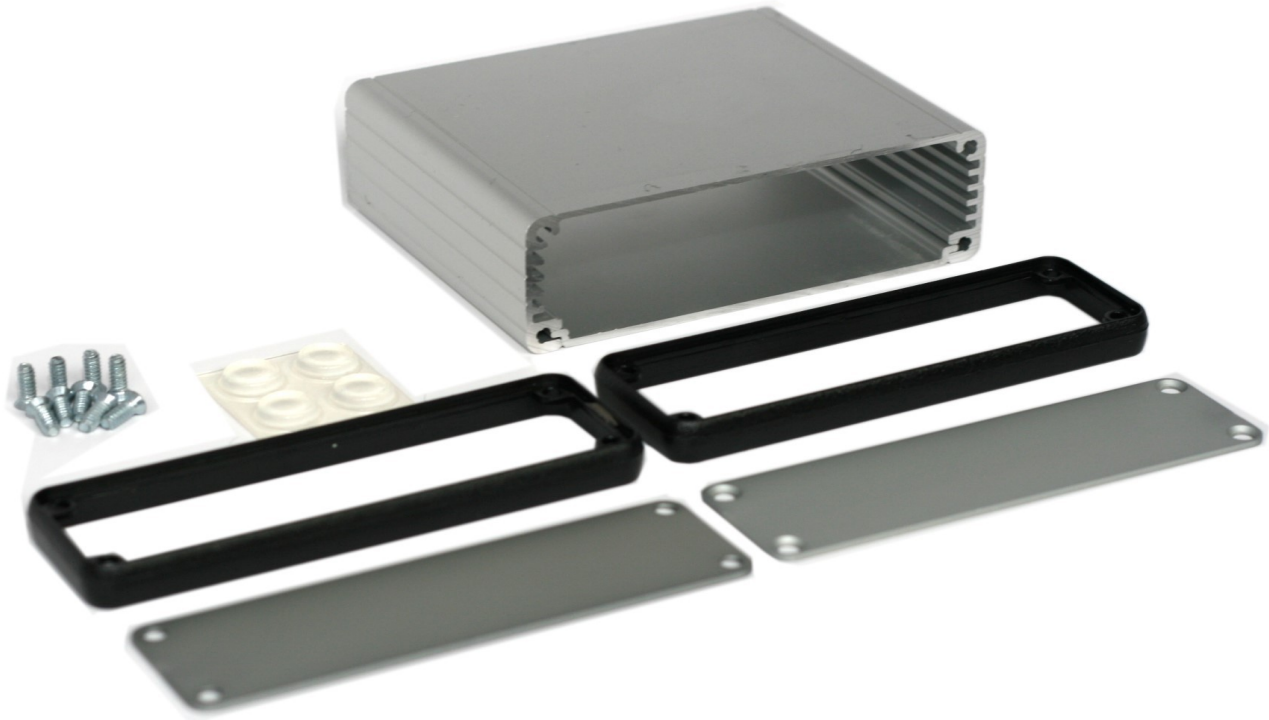


BOX2-1455L (and BOX2-1455L-BK)



*A Hammond 1455L extruded aluminum enclosure with
5 slots for BPS size 2 prototyping boards.*



Part Numbers

BPS Part# BOX2-1455L (silver)

BPS Part# BOX2-1455L-BK (black)

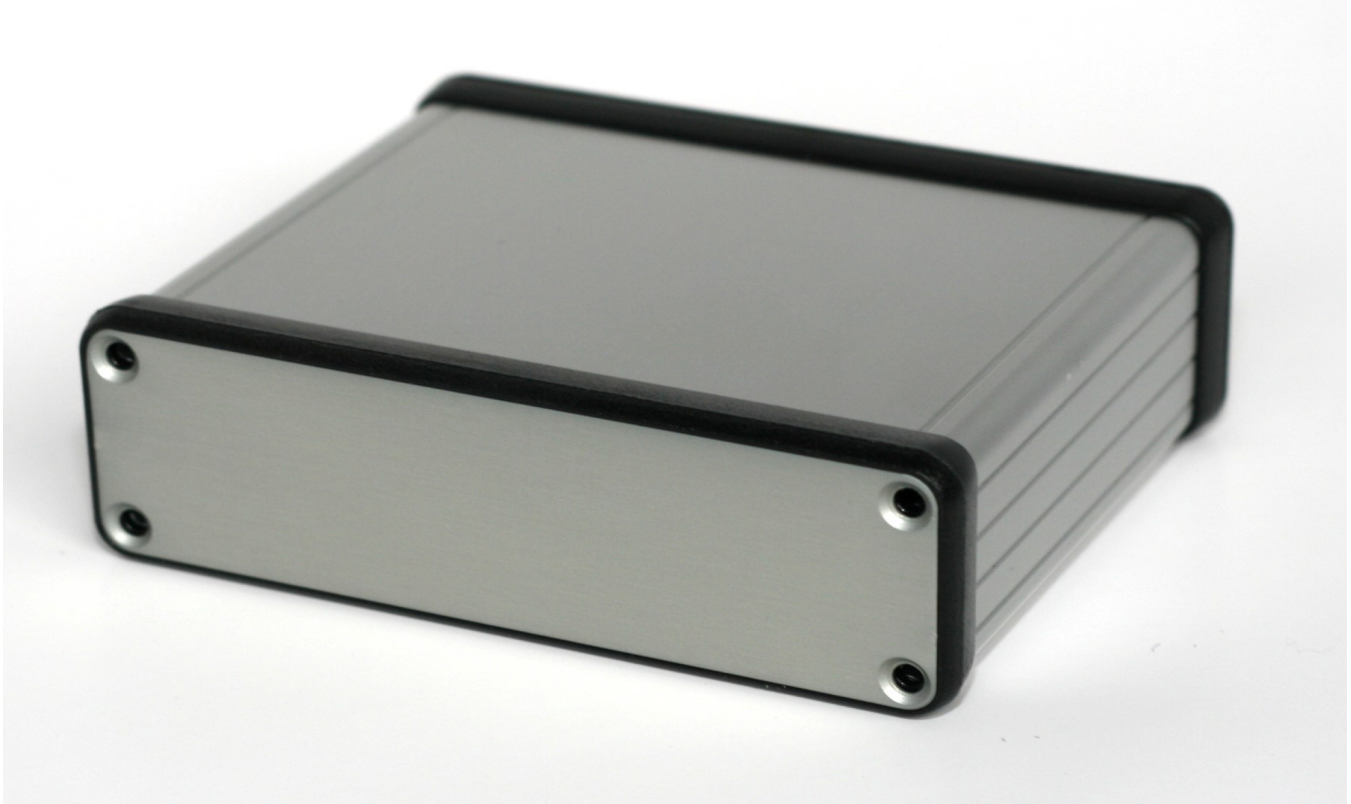
Features

- Box is clear or black anodized extruded aluminum with end plates anodized to match and polycarbonate plastic bezels.
- Box Size 4.18 x 3.42 x 1.2 inches (106 x 87 x 30.5 mm).
- 5 built-in card guides for size 2 PCBs (80 x 100mm).
- Slide out top panel plate.
- Rugged body constructed from extruded aluminum with a minimum thickness of .06" (1.5 mm).

Details

The BOX2-1455L is an extruded aluminum enclosure for electronic projects. The enclosure is designed for BusBoard Prototype Systems size 2 prototype PCBs (80x100mm boards).

PC boards mount horizontally by sliding into 5 built-in card guide slots. Two aluminum end panels are provided with attractive plastic bezels to hide the seams. The screws are recessed flathead type to provide a flat surface. The silver aluminum is anodized (clear or black) for protection from the elements. The end panels and the top plate can be removed for easy drilling or cutting of holes. Screws and adhesive rubber feet are included.



BPS part# BOX2-1455L-BK

Fits BPS size 2 boards



1455L1201BK

BPS BusBoard
Prototype
Systems