

Mini Half-Watt SMD 3.5mm (120° Viewing Angle)



OVS5MxBCR4 Series

Features:

- Compact Package Outline of 3.5 x 3.5 x 1.2 mm
- Robust energy-efficient design with long operating life
- Low thermal resistance
- Exceptional spatial uniformity
- Compatible to IR reflow soldering
- High Lumens output



Description:

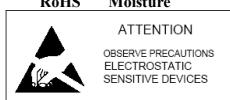
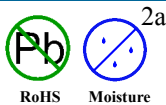
The mini-half watt is an energy-efficient packaged LED source that offers high luminance, and a long operating lifespan. This device offers a 120° viewing angle and an ultra-low profile (1.2 mm) making it highly suitable for conventional lighting and specialized applications.

Applications:

- Automotive exterior and interior lighting
- Architectural indoor and outdoor lighting
- General lighting
- Display Backlighting
- Electronic signs and signals

| Part Number | Viewing Angle | Emitted Color | Typ. Luminous Flux (lm) | Forward Voltage V_F | Power Dissipation @ 150 mA | Lens Color |
|-------------|---------------|---------------|-------------------------|-----------------------|----------------------------|------------|
| OVS5MWBCR4 | 120 | White | 50 | 3.4 | 0.51 W | Clear |
| OVS5MWWBCR4 | | Warm White | 30 | 3.6 | 0.54 W | |
| OVS5MBBCR4 | | Blue | 8.2 | 3.4 | 0.51 W | |
| OVS5MGBCR4 | | Green | 22 | 3.4 | 0.51 W | |

| Part Number | Viewing Angle | Emitted Color | Typ. Luminous Intensity (mcd) | Forward Voltage V_F | Power Dissipation @ 150 mA | Lens Color |
|-------------|---------------|---------------|-------------------------------|-----------------------|----------------------------|------------|
| OVS5MRBCR4 | 120 | Red | 7150 | 2.2 | 0.33 W | Clear |
| OVS5MABCR4 | | Amber | 7150 | 2.2 | 0.33 W | |
| OVS5MYBCR4 | | Yellow | 7150 | 2.2 | 0.33 W | |



DO NOT LOOK DIRECTLY AT LED WITH UNSHIELDED EYES OR DAMAGE TO RETINA MAY

General Note

TT Electronics reserves the right to make changes in product specification without notice or liability. All information is subject to TT Electronics' own data and is considered accurate at time of going to print.

TT Electronics | OPTEK Technology
1645 Wallace Drive, Carrollton, TX 75006 | Ph: +1 972 323 2200
www.ttelectronics.com | www.optekinc.com

Mini Half-Watt SMD 3.5mm (120° Viewing Angle)



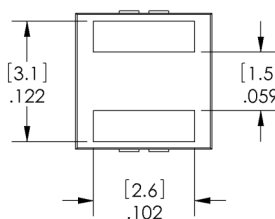
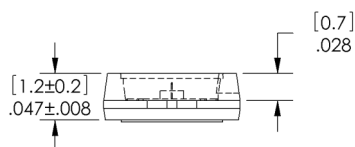
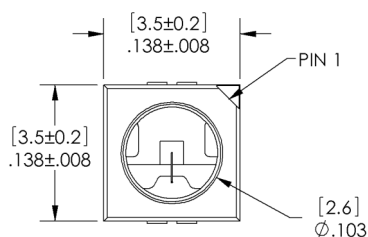
OVS5MxBCR4 Series

Electrical Specifications

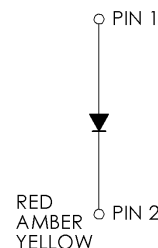
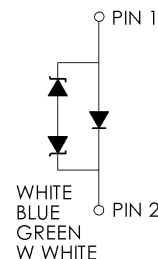
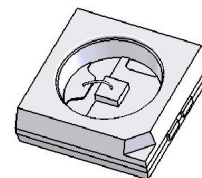
| Absolute Maximum Ratings (T _A = 25° C unless otherwise noted) | | | | |
|--|--------------------|-------------------------------|-------------------------------|-------------------------------|
| | Red, Amber, Yellow | Green, Blue | White | Warm White |
| DC Forward Current | 200 mA a | 180 mA | 180 mA | 180 mA |
| Peak Pulsed Forward Current ¹ | 1000 mA | 350 mA | 350 mA | 350 mA |
| Reverse Voltage | 12V @ 10 uA | Not designed for reverse bias | Not designed for reverse bias | Not designed for reverse bias |
| Junction Temperature ² | 125°C | 125°C | 125°C | 125°C |
| Power Dissipation | 750mW | 750mW | 750mW | 750mW |
| Storage and Operating Temperature | -40° ~ +100 ° C | -40° ~ +100 ° C | -40° ~ +100 ° C | -40° ~ +100 ° C |
| ESD (JEDEC-JESD22-A114F) | Class 2 | Class 2 | Class 2 | Class 2 |
| MSL (IPC / JEDEC J-STD-020C) | 2a / 672 Hrs | 2a / 672 Hrs | 2a / 672 Hrs | 2a / 672 Hrs |

Notes:

1. Pulse width $t_p \leq 10\mu s$, Duty cycle = 0.1
2. Thermal Resistance = 5 C/W



DIMENSIONS ARE IN INCHES [MM].



| | |
|-------|---------|
| PIN 1 | ANODE |
| PIN 2 | CATHODE |

General Note

TT Electronics reserves the right to make changes in product specification without notice or liability. All information is subject to TT Electronics' own data and is considered accurate at time of going to print.

TT Electronics | OPTEK Technology
1645 Wallace Drive, Carrollton, TX 75006 | Ph: +1 972 323 2200
www.ttelectronics.com | www.optekinc.com

Mini Half-Watt SMD 3.5mm (120° Viewing Angle)



OVS5MxBCR4 Series

Optical and Electrical Characteristics - Red, Amber, Yellow ($I_F = 140 \text{ mA}$, $T_A = 25^\circ \text{ C}$)

| SYMBOL | PARAMETER | MIN | TYP | MAX | UNITS | |
|-------------------------|------------------------|--------|------|------|---------------|-----|
| V_F | Forward Voltage | 1.9 | 2.2 | 2.65 | V | |
| Φ | Luminous Intensity | Red | 4500 | 7150 | 9000 | mcd |
| | | Amber | | | | |
| | | Yellow | | | | |
| λ_D | Dominant Wavelength | Red | 620 | 625 | 630 | nm |
| | | Amber | 610 | 615 | 621 | |
| | | Yellow | 585 | 590 | 594 | |
| I_R | Reverse Current @ 12 V | ---- | 10 | ---- | μA | |
| $2\theta_{\frac{1}{2}}$ | 50% Power Angle | ---- | 120 | ---- | deg | |

Optical and Electrical Characteristics - Blue, Green ($I_F = 150 \text{ mA}$, $T_A = 25^\circ \text{ C}$)

| SYMBOL | PARAMETER | MIN | TYP | MAX | UNITS | |
|-------------------------|---------------------|-------|------|------|-------|----|
| V_F | Forward Voltage | 3.0 | 3.4 | 3.9 | V | |
| Φ | Luminous Flux | Blue | 6.3 | 8.2 | 10.7 | lm |
| | | Green | 18.1 | 22.0 | 30.6 | |
| λ_D | Dominant Wavelength | Blue | 460 | 465 | 470 | nm |
| | | Green | 520 | 525 | 535 | |
| $2\theta_{\frac{1}{2}}$ | 50% Power Angle | ---- | 120 | ---- | deg | |

Optical and Electrical Characteristics - White, Warm White ($I_F = 150 \text{ mA}$, $T_A = 25^\circ \text{ C}$)

| SYMBOL | PARAMETER | MIN | TYP | MAX | UNITS | |
|-------------------------|-----------------|------------|------|------|-------|----|
| V_F | Forward Voltage | White | 3.0 | 3.4 | 4.1 | V |
| | | Warm White | | 3.6 | | |
| Φ | Luminous Flux | White | 30.6 | 50 | 67.2 | lm |
| | | Warm White | 23.5 | 30 | 39.8 | |
| $2\theta_{\frac{1}{2}}$ | 50% Power Angle | ---- | 120 | ---- | deg | |

General Note

TT Electronics reserves the right to make changes in product specification without notice or liability. All information is subject to TT Electronics' own data and is considered accurate at time of going to print.

TT Electronics | OPTEK Technology
1645 Wallace Drive, Carrollton, TX 75006 | Ph: +1 972 323 2200
www.ttelectronics.com | www.optekinc.com

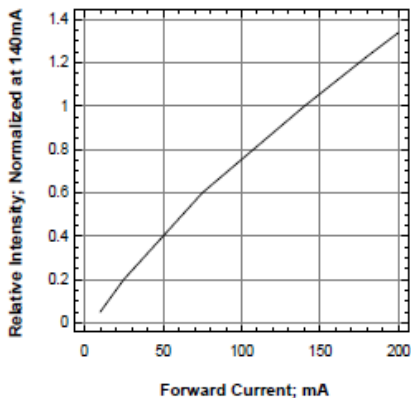
Mini Half-Watt SMD 3.5mm (120° Viewing Angle)



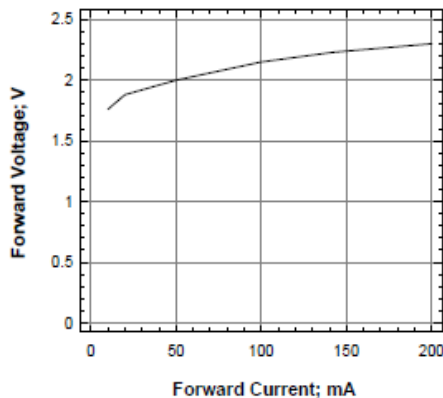
OVS5MxBCR4 Series

OVS5MABCR4 (Amber), OVS5MRBCR4 (Red) and OVS5MYBCR4 (Yellow)

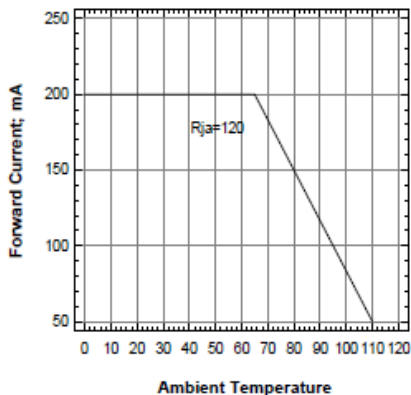
Relative Intensity Vs Forward Current



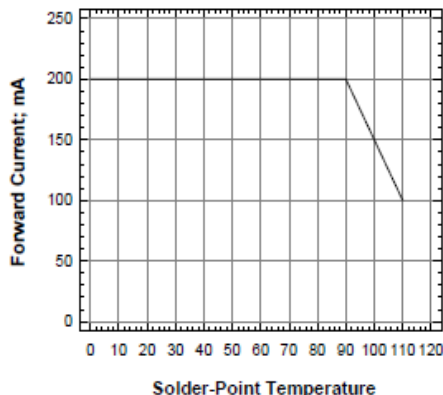
Forward Voltage Vs Forward Current



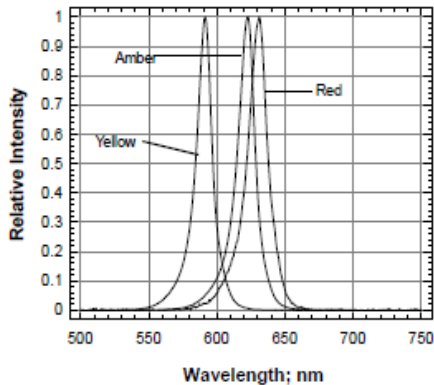
Maximum Current Vs Ambient Temperature



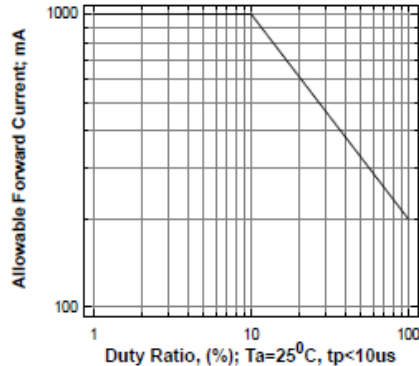
Maximum Current vs Solder-Point Temperature



Relative Intensity Vs Wavelength



Allowable Forward Current Vs Duty Ratio



General Note

TT Electronics reserves the right to make changes in product specification without notice or liability. All information is subject to TT Electronics' own data and is considered accurate at time of going to print.

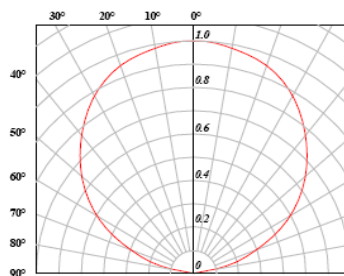
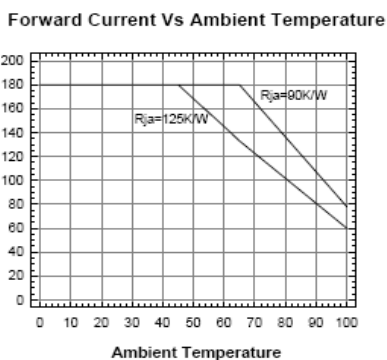
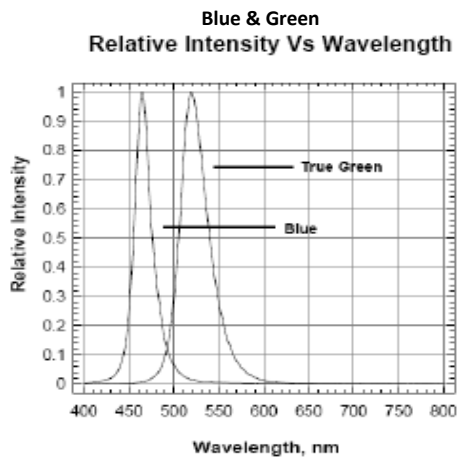
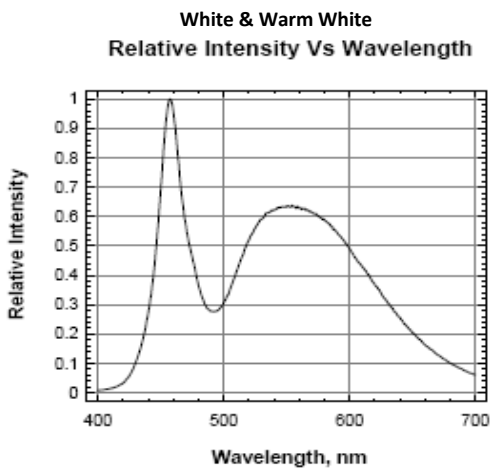
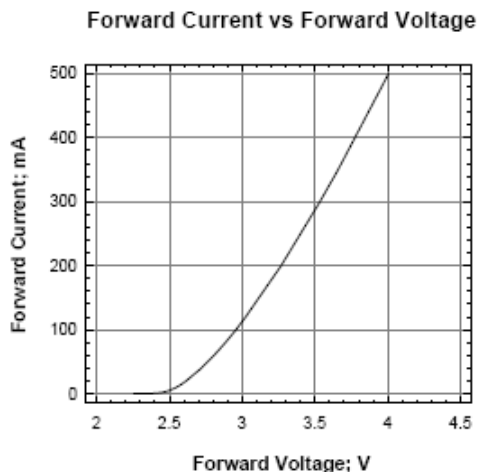
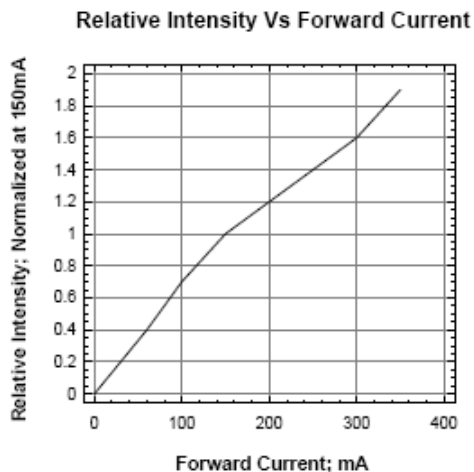
TT Electronics | OPTEK Technology
1645 Wallace Drive, Carrollton, TX 75006 | Ph: +1 972 323 2200
www.ttelectronics.com | www.optekinc.com

Mini Half-Watt SMD 3.5mm (120° Viewing Angle)



OVS5MxBRC4 Series

OVS5MBCR4 (Blue), OVS5MGBCR4 (Green), OVS5MWBCR4 (White) and OVS5MWWBCR4 (Warm White)



General Note

TT Electronics reserves the right to make changes in product specification without notice or liability. All information is subject to TT Electronics' own data and is considered accurate at time of going to print.

TT Electronics | OPTEK Technology
1645 Wallace Drive, Carrollton, TX 75006 | Ph: +1 972 323 2200
www.ttelectronics.com | www.optekinc.com

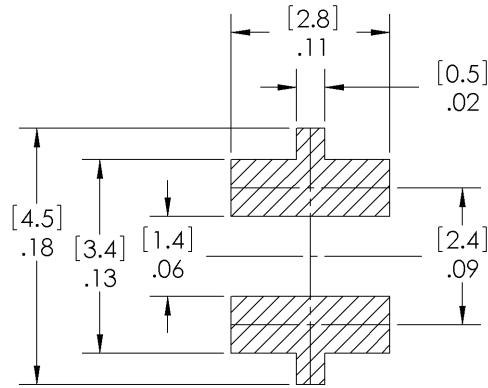
Mini Half-Watt SMD 3.5mm (120° Viewing Angle)



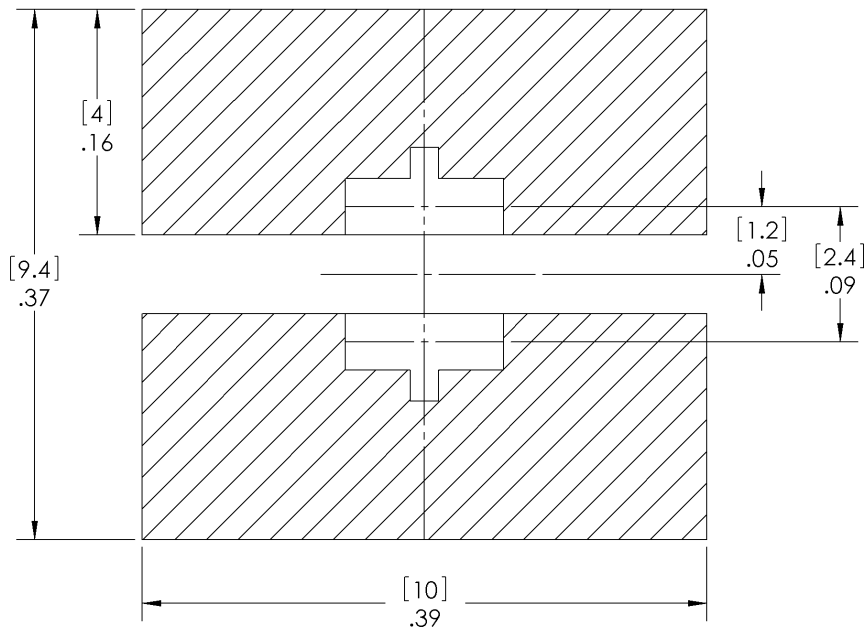
OVS5MxBCR4 Series

Solder Pad Design

Note: Metal core circuit board (MCPCB) is highly recommended for high density applications. FR-4 board is recommended for other applications



Solder Paste Pattern



Copper Pattern

General Note

TT Electronics reserves the right to make changes in product specification without notice or liability. All information is subject to TT Electronics' own data and is considered accurate at time of going to print.

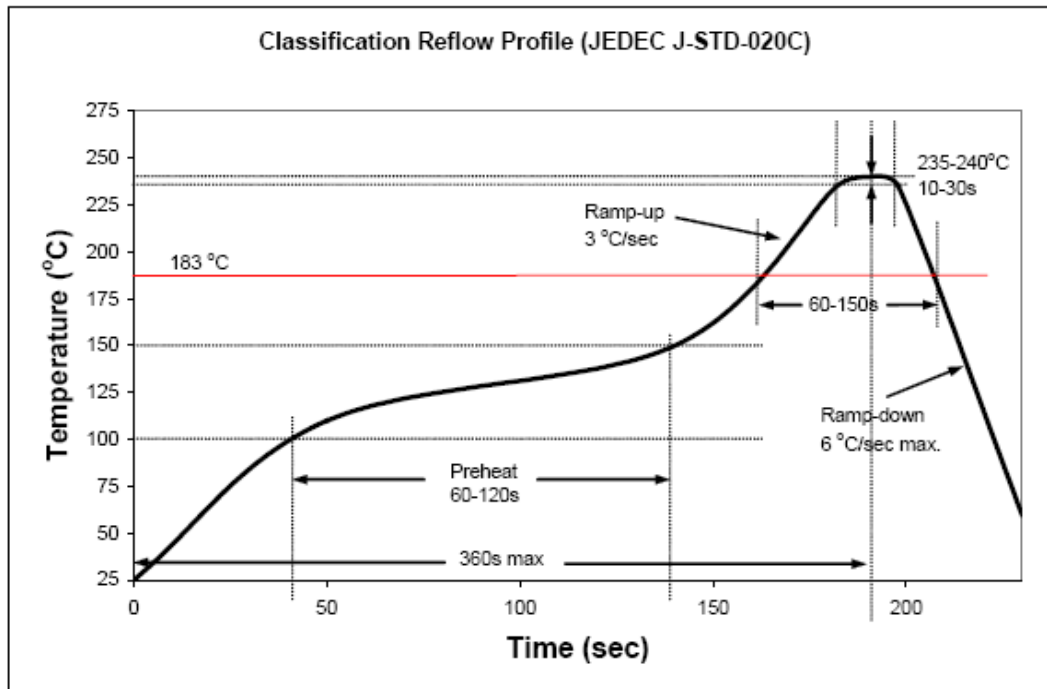
TT Electronics | OPTEK Technology
1645 Wallace Drive, Carrollton, TX 75006 | Ph: +1 972 323 2200
www.ttelectronics.com | www.optekinc.com

Mini Half-Watt SMD 3.5mm (120° Viewing Angle)

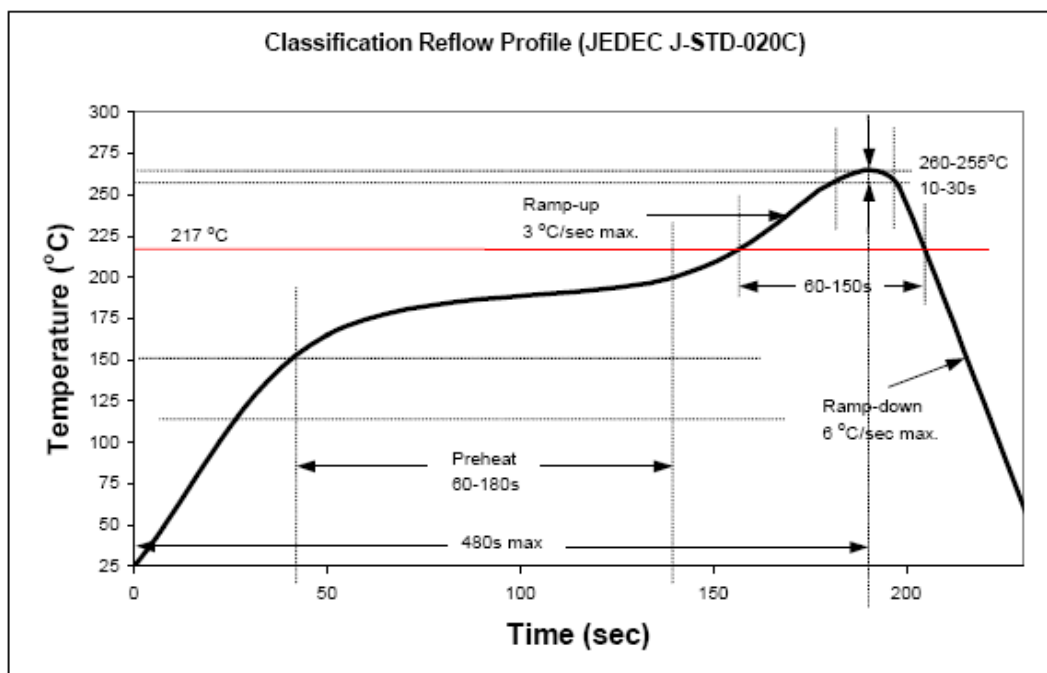


OVS5MxBCR4 Series

Recommended Sn-Pb IR-Reflow Soldering Profile.



Recommended Pb Free IR-Reflow Soldering Profile.



General Note

TT Electronics reserves the right to make changes in product specification without notice or liability. All information is subject to TT Electronics' own data and is considered accurate at time of going to print.

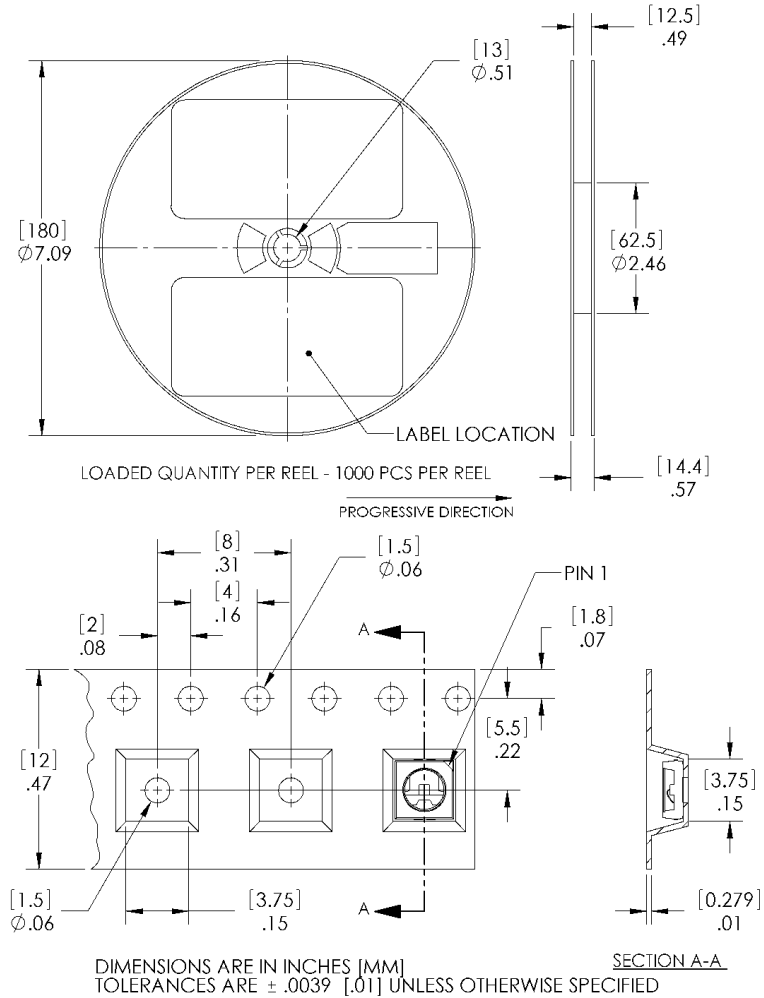
TT Electronics | OPTEK Technology
1645 Wallace Drive, Carrollton, TX 75006 | Ph: +1 972 323 2200
www.ttelectronics.com | www.optekinc.com

Mini Half-Watt SMD 3.5mm (120° Viewing Angle)



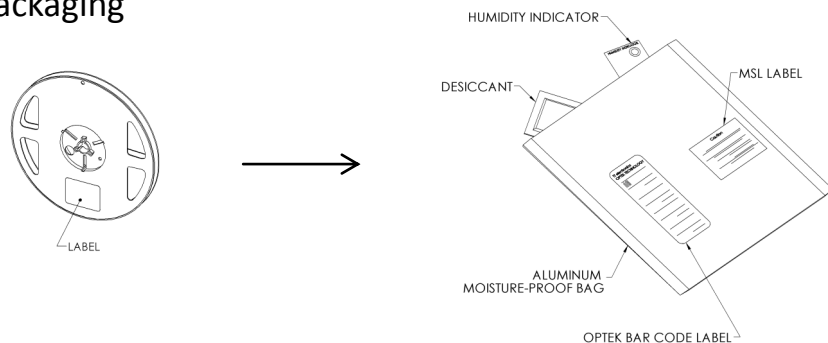
OVS5MxBCR4 Series

Reel Dimensions: 7-inch reel



Carrier Tape Dimensions: Loaded quantity 1000 pieces per reel

Moisture Resistant Packaging



General Note

TT Electronics reserves the right to make changes in product specification without notice or liability. All information is subject to TT Electronics' own data and is considered accurate at time of going to print.

TT Electronics | OPTEK Technology
1645 Wallace Drive, Carrollton, TX 75006 | Ph: +1 972 323 2200
www.ttelectronics.com | www.optekinc.com