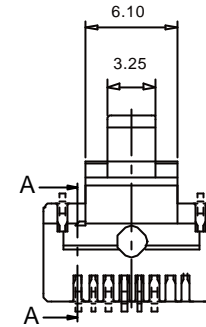
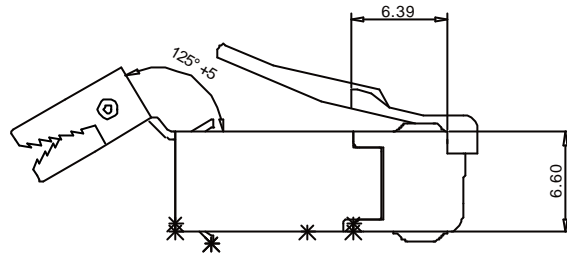
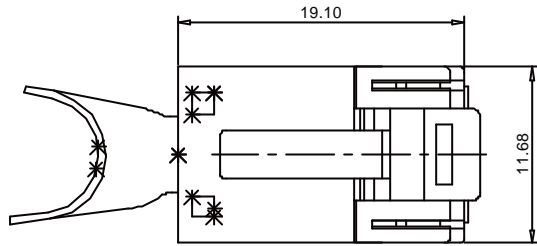
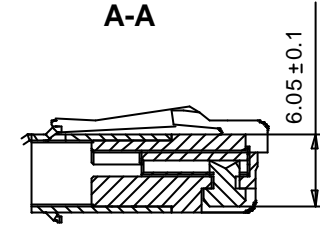


THE INFORMATION CONTAINED IN THIS DRAWING IS THE SOLE PROPERTY OF YAMAICHI ELECTRONICS DEUTSCHLAND GmbH. ANY REPRODUCTION IN PART OR WHOLE WITHOUT THE WRITTEN PERMISSION OF YAMAICHI ELECTRONICS DEUTSCHLAND GmbH IS PROHIBITED.

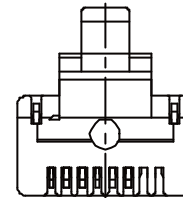
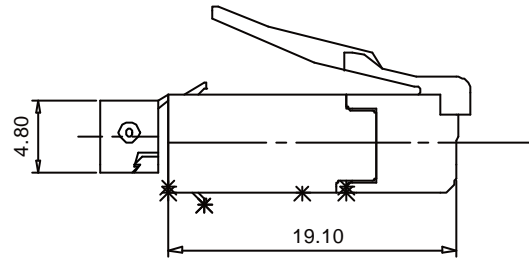
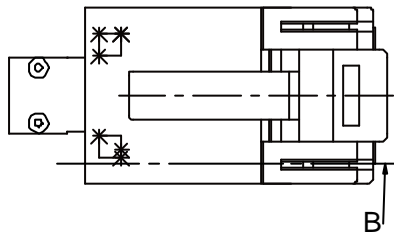
Assembly before crimping



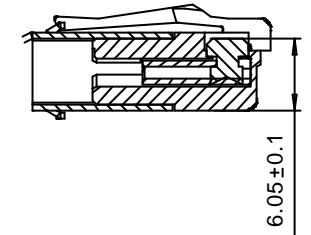
A-A



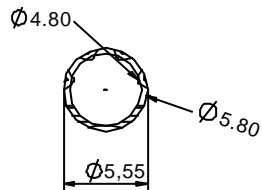
Assembly after crimping



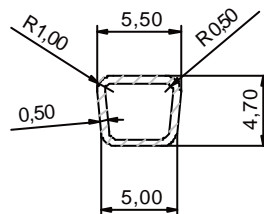
B-B



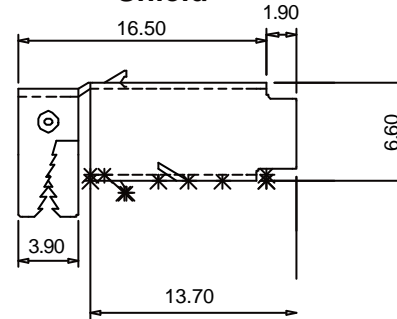
Shield after round crimping



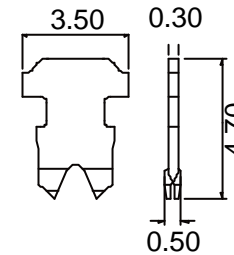
After square crimping



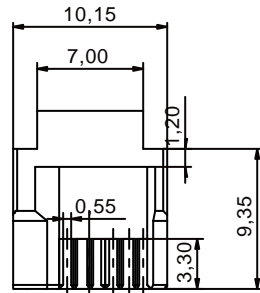
Shield



Contacts for stranded wire



Insert



Material :
 Housing material : PBT
 Durability : 2000 mating cycles
 Contact blade : phosphor Bronze
 High strenght copper alloy
 100 microinches nickel under plated &
 gold selected 30 microinches

UNLESS OTHERWISE SPECIFIED:
 DIMENSIONS ARE IN MILLIMETERS
 TOLERANCES: ±0.3
 ALL UNDIMENSIONED EDGES
 HAVE A RADIUS OF: 0.2mm

REV.	REVISION DESCRIPTION	INITIALS	REV. DATE



NOTES:

DO NOT SCALE DRAWING

CLASSIFICATION: Y-ConPlug-31 /RJ 45 plus cable plug
 8(6)+2 with power contacts

DESIGN	NAME	DATE
TN	BH	03.07.2003
DRAWN	BH	08.09.2003
CHECKED		

TITLE: Customer-drawing

ANGLE PROJECTION: First
 WEIGHT:

APPROVED: WM
 HK

DWG NO.: Customer-P(090)A83
 REVISION: 0

SCALE: 3:1
 SHEET 1 OF 1
 A3 - ASSEMBLY

08.09.2003