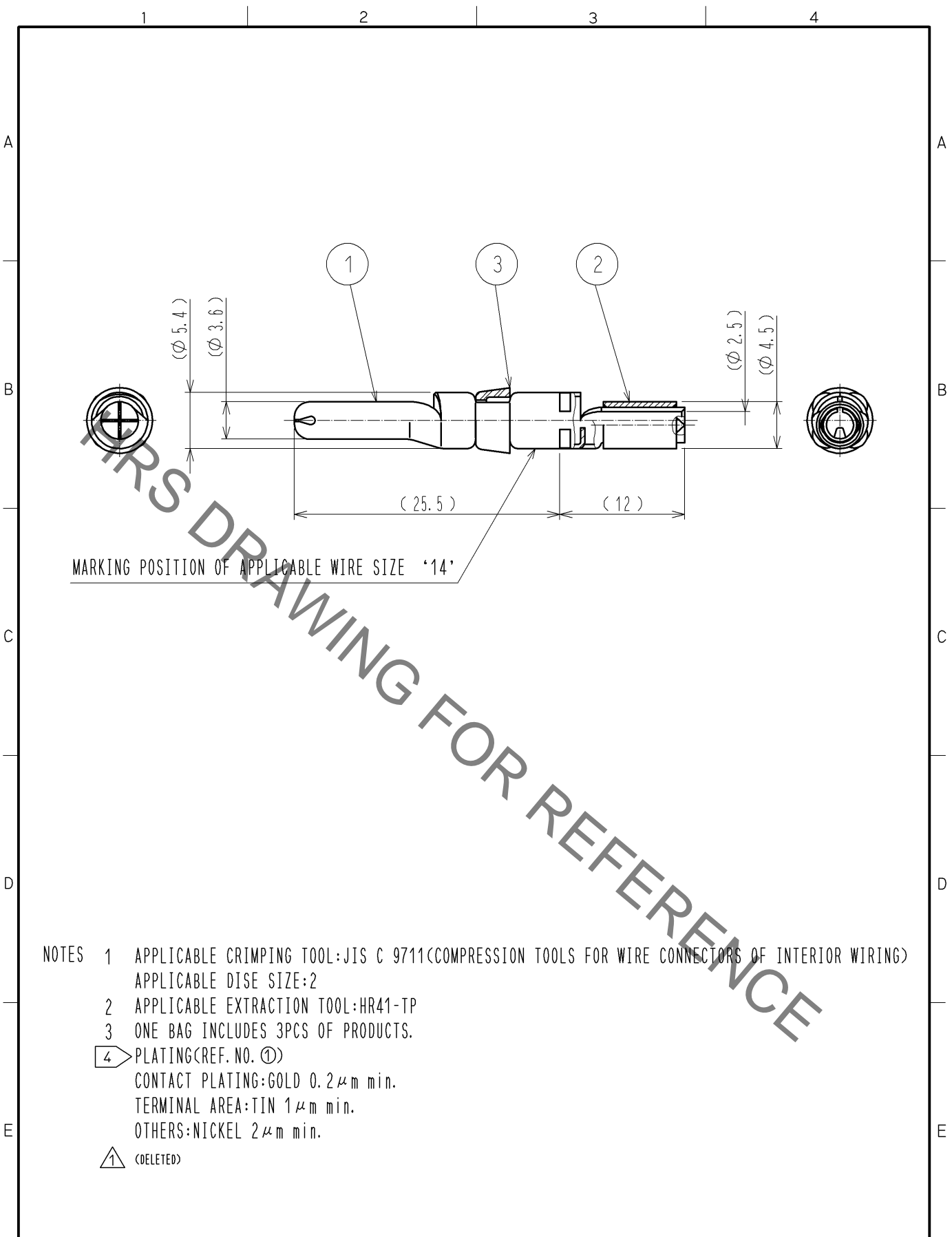


Jul.1.2019 Copyright 2019 HIROSE ELECTRIC CO., LTD. All Rights Reserved.
 In case of consideration for using Automotive equipment / device which demand high reliability, kindly contact our sales window correspondents.



MARKING POSITION OF APPLICABLE WIRE SIZE '14'

- NOTES
- 1 APPLICABLE CRIMPING TOOL: JIS C 9711 (COMPRESSION TOOLS FOR WIRE CONNECTORS OF INTERIOR WIRING)
APPLICABLE DIE SIZE: 2
 - 2 APPLICABLE EXTRACTION TOOL: HR41-TP
 - 3 ONE BAG INCLUDES 3PCS OF PRODUCTS.
 - 4 PLATING (REF. NO. ①)
CONTACT PLATING: GOLD 0.2 μ m min.
TERMINAL AREA: TIN 1 μ m min.
OTHERS: NICKEL 2 μ m min.
- ⚠ (DELETED)

2	COPPER	TIN PLATING						
1	COPPER ALLOY	4	3	POLYBUTYLENE TEREPHTHALATE (WHITE) UL94V-0				
NO.	MATERIAL	FINISH .	REMARKS	NO.	MATERIAL	FINISH .	REMARKS	
UNITS mm		SCALE 2 : 1	COUNT 1	DESCRIPTION OF REVISIONS DIS-C-002929		DESIGNED KN. IKEHARA	CHECKED HY. KOBAYASHI	DATE 13. 09. 26
HIROSE ELECTRIC CO., LTD.		APPROVED : SU. OBARA	13. 01. 18	DRAWING NO. EDC4-117550-00				
		CHECKED : HY. KOBAYASHI	13. 01. 18	PART NO. HR41-PC-121				
		DESIGNED : TY. SUZUKI	13. 01. 18	CODE NO. CL141-0004-5-00				
		DRAWN : KN. IKEHARA	13. 01. 15	1/1				