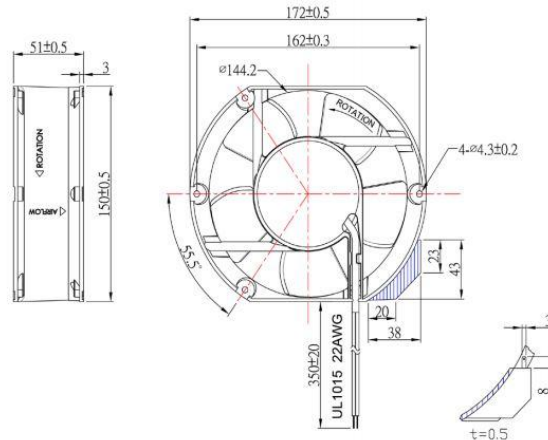


# OA172EC IP68-ATEX Series



EC Fan, 115V / 230V  
172x150x51mm (6.7"x 2.0")



|                       |   |  |  |
|-----------------------|---|--|--|
| Frame                 | Aluminum (ADC-12)                             | <b>Operating Temperature</b><br>-20°C ~ +70°C<br><br><b>Life Expectancy</b><br>50,000 hours (L10 at 45°C)<br><br><b>IP68 Rating</b><br>ATEX Certification<br><br><b>Weight:</b> 1.54 lbs<br><br>m2 |  |
| Impeller              | PBT, UL94 V-0 Plastic                         |  |  |
| Connection            | 2x Lead wires, or Terminals                   |  |  |
| Motor                 | EC Motor, Electronically Protected, IP68      |  |  |
| Bearing System        | Dual Ball Bearings                            |  |  |
| Dielectric Strength   | 1 Sec at 1800 VAC, 50/60Hz                    |  |  |
| Insulation Resistance | 10M ohm between leadwires and frame (500 VDC) |  |  |

| Part Number         | Rated Voltage | Nominal Power | Rated Current | Rated Speed (RPM) | Airflow (CFM) | Noise Level (dB) | Max. Static Pressure  |
|---------------------|---------------|---------------|---------------|-------------------|---------------|------------------|-----------------------|
| OA172EC-11-1*BIP68A | 115 VAC       | 15 W          | 0.23 A        | 3000              | 220           | 57               | 0.62"H <sub>2</sub> O |
| OA172EC-22-1*BIP68A | 230 VAC       | 15 W          | 0.13 A        | 3000              | 220           | 57               | 0.62"H <sub>2</sub> O |

\* Indicates "T" (Terminals) or "W" (Wire Leads)