

# MICRO SWITCH

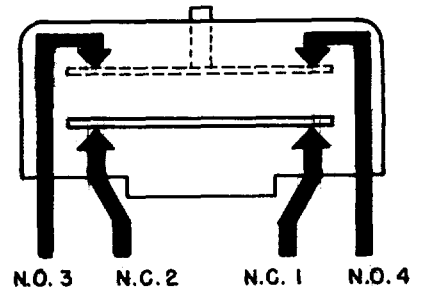
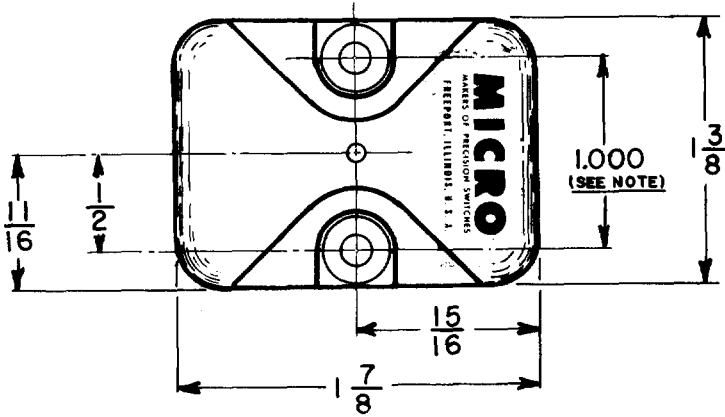
a Honeywell Division

FED. MF6. CODE 91929

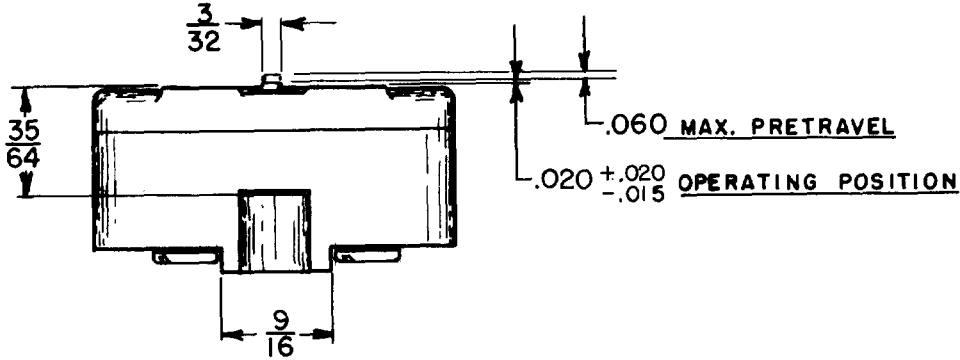
## SWITCH - BASIC

CATALOG LISTING

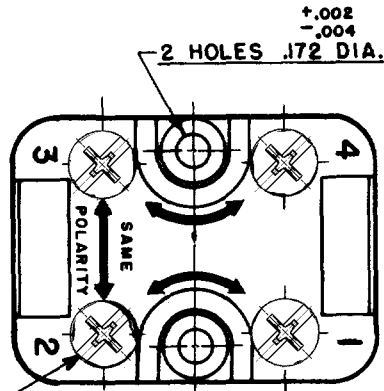
IMNI



CIRCUIT DIAGRAM

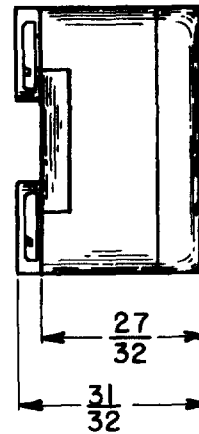


CATALOG LISTING  
 IMNI  
 PAGE 1 OF 1  
 RELEASE NO. PR-3259  
 REPLACES  
 ISSUE  
 M  
 6  
 CHECK  
 REVISIONS  
 A  
 CO-73287M  
 GJW  
 18 MAY 95  
 CHECK  
 JJA  
 25 MAY 95  
 CHECK  
 GJW  
 18 MAY 95  
 DRAWN  
 FORMTEK



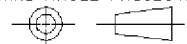
**NOTE**

1 - MOUNTING HOLES WILL ACCEPT NO. 8 SCREWS ON 1.000 ± .002 CENTERS



THIS DRAWING COVERS A PROPRIETARY ITEM AND IS THE PROPERTY OF MICRO SWITCH, A DIVISION OF HONEYWELL. THIS DRAWING IS NOT TO BE COPIED OR USED WITHOUT THE APPROVAL OF MICRO SWITCH.

THIRD ANGLE PROJECTION



**CHARACTERISTICS**

**OPERATING FORCE**-----12-20 OZ.  
**RELEASE FORCE** -----6 OZ. MIN.  
**DIFFERENTIAL TRAVEL**-----.020±.008  
**OVERTRAVEL**-----.010 MIN.

**ELECTRICAL DATA**

CONTACT ARRANGEMENT  
SEE CIRCUIT DIAGRAM

10 A-120,240,480 OR 600 VAC; 1/2 HP-120 VAC,  
1 H.P.-240 VAC, 0.8 A-115 VDC, 0.4 A-230 VDC

PILOT DUTY RATING: 600 VAC MAX.

**SCALE FULL**

DO NOT SCALE PRINT

**UNLESS OTHERWISE SPECIFIED TOLERANCES ARE**  
 ONE PLACE (.0) ±.030  
 TWO PLACE (.00) ±.015  
 THREE PLACE (.000) ±.005  
 ANGLES ±

WEIGHT