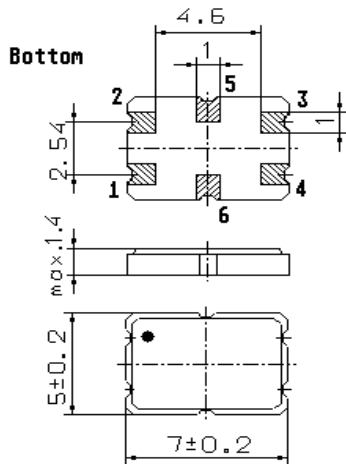


Specification for monolithic crystal filter

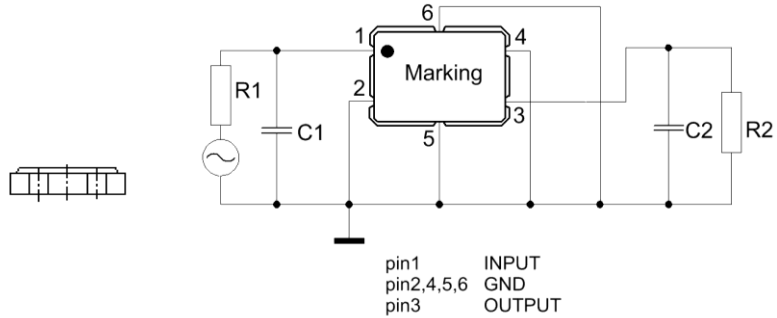
**MQF 45.0-7000/01**

**1. General**

1.1. Package:



**GS 2**



- |                                   |                  |
|-----------------------------------|------------------|
| 1.2. Type name:                   | MQF 45.0-7000/01 |
| 1.3. Number of poles:             | 2                |
| 1.4. Operating temperature range: | -20°C to +70°C   |
| 1.5. Storage temperature range:   | -45°C to +85°C   |

**2. Electric values**

- |   |   |
|---|---|
| 2.1. Nominal centre frequency $f_0$ :                                       | 45.0 MHz                                      |
| <b>2.2. Pass band</b>   |   |
| 2.2.1. Bandwidth between 3 dB - frequencies:                                | $> f_0 \pm 35$ kHz                            |
| 2.2.2. Ripple:  | $< 1.0$ dB at $f_0 \pm 25$ kHz                |
| 2.2.3. Insertion loss:<br>( measured on smallest attenuation in pass band ) | $< 3.0$ dB                                    |
| <b>2.3. Stop band</b>   |   |
| 2.3.1. $f_0 \pm 125$ kHz  | $> 20$ dB                                     |
| 2.3.2. Alternate attenuation:   | $> 30$ dB ( except spurious )                 |
| 2.4. Terminating impedance ( input and output ):                            | $2400 \Omega // 0.15$ pF                      |
| 2.5. Maximum input power level:   | +0 dBm (operating) / +20 dBm (without damage) |
| 3. Marking:   | M45G1<br>yyww                                 |
| 4. Environment conditions:  | Corresponding to Vectron standard CF001       |

Edited by: \_\_\_\_\_ date: \_\_\_\_\_ name: \_\_\_\_\_