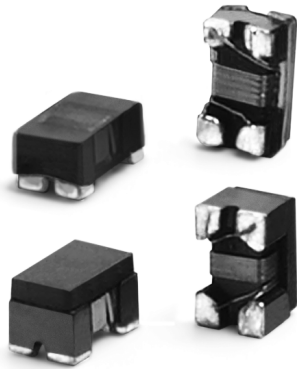


2-Line Chip Style Common Mode Chokes

ChipChoke™ CCMC Series



- Ⓢ Available in 0805 (2012) and 1206 (3216) size
- Ⓢ For USB2.0, 3.0 and other high speed differential signal lines (IEEE1394, LVDS)
- Ⓢ Suppression of common mode noise without attenuating the signal
- Ⓢ Large range of common mode impedance to fit with signal and noise level
- Ⓢ Magnetic shield versions available for lower Rdc and higher current features

Electrical Specifications @ 25°C - Operating Temperature -40°C to +125°C

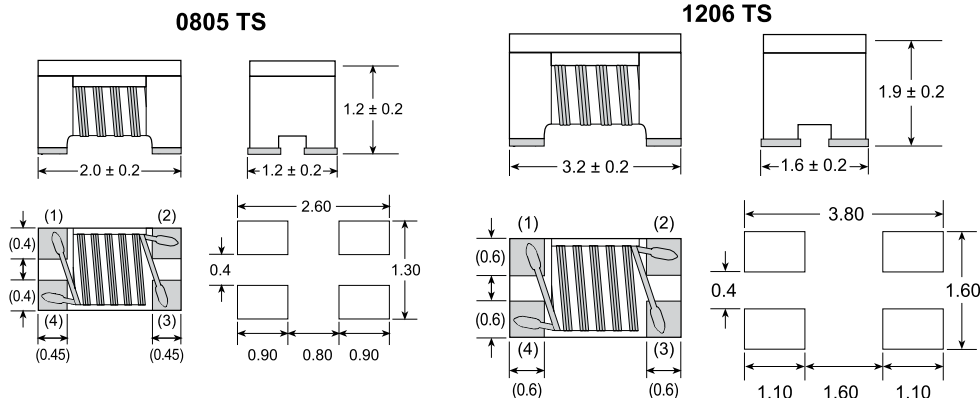
| Part Number (25%) | Common Mode Impedance @ 100MHz (Ω) | DC Resistance (Ω MAX) | Rated Voltage (Vdc) | Rated Current (mA MAX) | Withstanding Voltage (Vdc) | Insulation Resistance (MΩ MIN) |
|--|------------------------------------|-----------------------|---------------------|------------------------|----------------------------|--------------------------------|
| 0805CCMCXTS - Magnetic Shield - 0805 Size | | | | | | |
| PE-0805CCMC900STS | 90 | 0.35 | 50 | 330 | 125 | 10 |
| PE-0805CCMC121STS | 120 | 0.30 | 50 | 370 | 125 | 10 |
| PE-0805CCMC181STS | 180 | 0.35 | 50 | 330 | 125 | 10 |
| PE-0805CCMC261STS | 260 | 0.40 | 50 | 300 | 125 | 10 |
| PE-0805CCMC361STS | 360 | 0.45 | 50 | 280 | 125 | 10 |
| 1206CCMCXTS - Magnetic Shield - 1206 Size | | | | | | |
| PE-1206CCMC900STS | 90 | 0.3 | 50 | 370 | 125 | 10 |
| PE-1206CCMC601STS | 600 | 0.80 | 50 | 260 | 125 | 10 |
| PE-1206CCMC102STS | 1000 | 1.00 | 50 | 230 | 125 | 10 |
| PE-1206CCMC222STS | 2200 | 1.20 | 50 | 200 | 125 | 10 |

Notes:

1. These part numbers are lead free and RoHS compliant. No additional suffix or identifier is required.

Mechanicals

0805 TS, 1206 TS



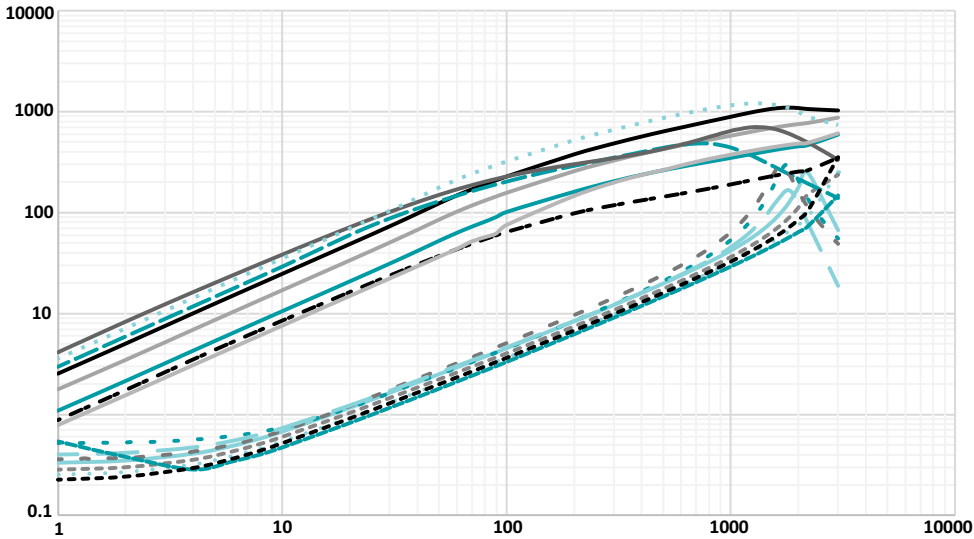
Unit of Measurement: mm

2-Line Chip Style Common Mode Chokes

ChipChoke™ CCMC Series

Impedance vs Frequency

PE-0805CCMCXXXSTS

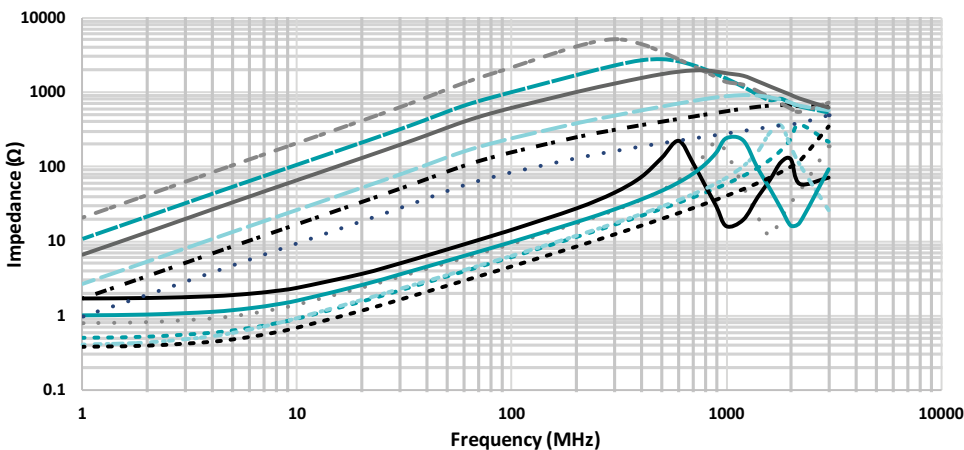


| Common Mode | |
|-------------|------------------|
| ITEM | Part Number |
| | PE-0805CCM900STS |
| | PE-0805CCM121STS |
| | PE-0805CCM181STS |
| | PE-0805CCM261STS |
| | PE-0805CCM361STS |

| Differential Mode | |
|-------------------|------------------|
| ITEM | Part Number |
| | PE-0805CCM900STS |
| | PE-0805CCM121STS |
| | PE-0805CCM181STS |
| | PE-0805CCM261STS |
| | PE-0805CCM361STS |

Impedance vs Frequency

PE-1206CCMCXXXSTS



| Common Mode | |
|-------------|------------------|
| ITEM | Part Number |
| | PE-1206CCM900STS |
| | PE-1206CCM601STS |
| | PE-1206CCM102STS |
| | PE-1206CCM222STS |

| Differential Mode | |
|-------------------|------------------|
| ITEM | Part Number |
| | PE-1206CCM900STS |
| | PE-1206CCM601STS |
| | PE-1206CCM102STS |
| | PE-1206CCM222STS |

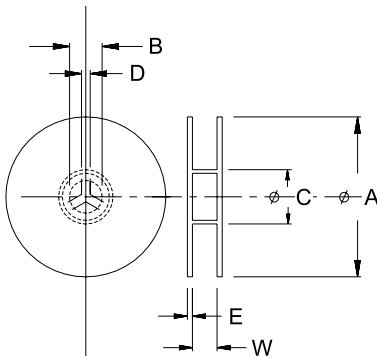
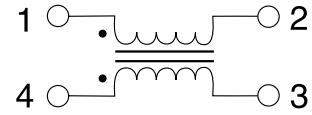
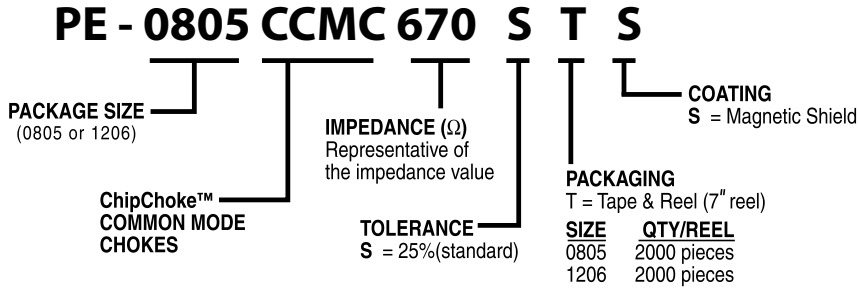
2-Line Chip Style Common Mode Chokes

ChipChoke™ CCMC Series

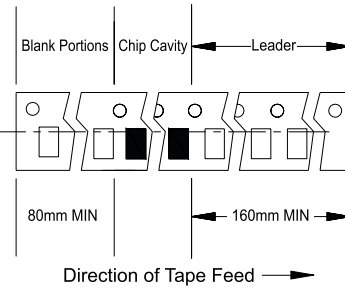
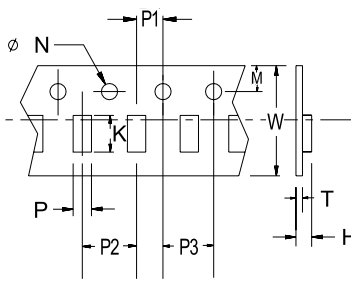
Part Number Legend

Schematics

0805 TS, 1206 TS



Tape and Reel Specifications



Packaging Specifications

0805 TS / 1206 TS

| Series | Parts per Reel | Reel Dimensions (mm) | | | | | Tape Dimensions (mm) | | | | | | | | | |
|---------|----------------|----------------------|----|----|-----|-----|----------------------|-----|-----|-----|------|-----|------|------|-----|------|
| | | A | B | C | D | E | W | P1 | P2 | P3 | H | T | K | M | N | P |
| 0805 TS | 2000 | 178 | 21 | 75 | 2.0 | 2.5 | 8.0 | 2.0 | 4.0 | 4.0 | 1.30 | 0.3 | 2.25 | 1.75 | 1.5 | 1.42 |
| 1206 TS | 2000 | 178 | 21 | 75 | 2.0 | 2.5 | 8.0 | 2.0 | 4.0 | 4.0 | 2.10 | 0.2 | 3.50 | 1.75 | 1.5 | 1.90 |

For More Information:

Americas - prodinfonetworkamericas@pulseelectronics.com | Europe - comms-apps-europe@pulseelectronics.com | Asia - prodinfonetworkapac@pulseelectronics.com

Performance warranty of products offered on this data sheet is limited to the parameters specified. Data is subject to change without notice. Other brand and product names mentioned herein may be trademarks or registered trademarks of their respective owners. © Copyright, 2020. Pulse Electronics, Inc. All rights reserved.