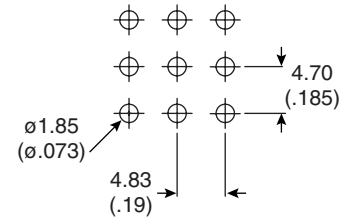
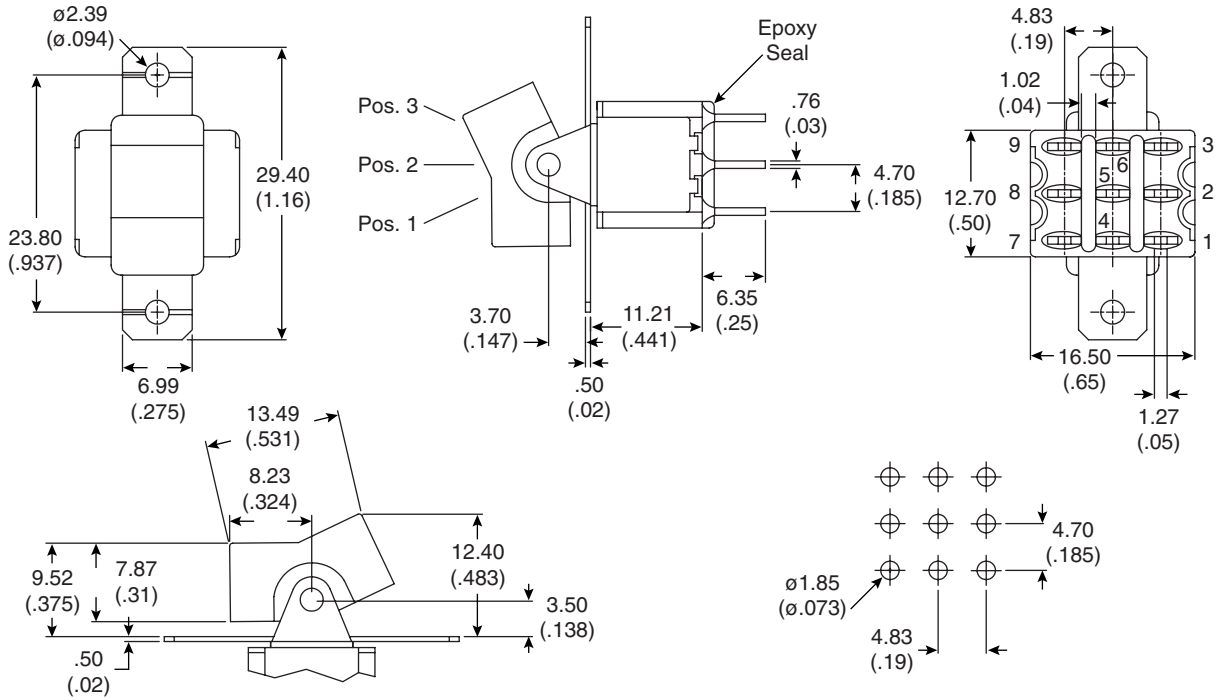


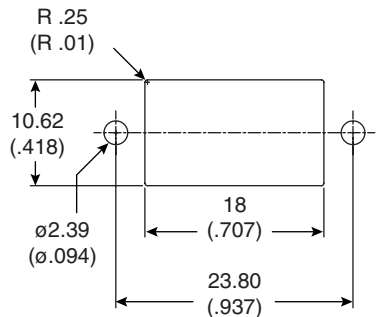
DIMENSIONS: mm (in.)



P. C. Mounting

Pos. 1	Pos. 2	Pos. 3
On	None	On
2-3, 5-6, 8-9	Open	2-1, 5-4, 8-7

Switch Function



Mechanical Specifications:

- Mechanical Life: 50,000 make-and-break cycles at full load
- Operating Temperature: -30°C to 85°C

Electrical Specifications:

- Rating: 2A/250VAC, 5A/120VAC or 28 VDC
- Contact Resistance: 10mΩ max. initial @ 2-4 VDC 100mA
- Insulation Resistance: 1000MΩ min.
- Dielectric Strength: 1000 V RMS @ sea level

Materials:

- Case: Dially phthalate (DAP)
- Actuator: Nylon, black std.
- Bushing: Brass, nickel plated
- Housing: Stainless steel
- Switch Support: Brass, tin plated
- Terminals/Contact: Brass, Silver or Gold plated

Note:

- RoHS Compliant by Exemption

Miniature Rocker Switch
103-7003-EVX

