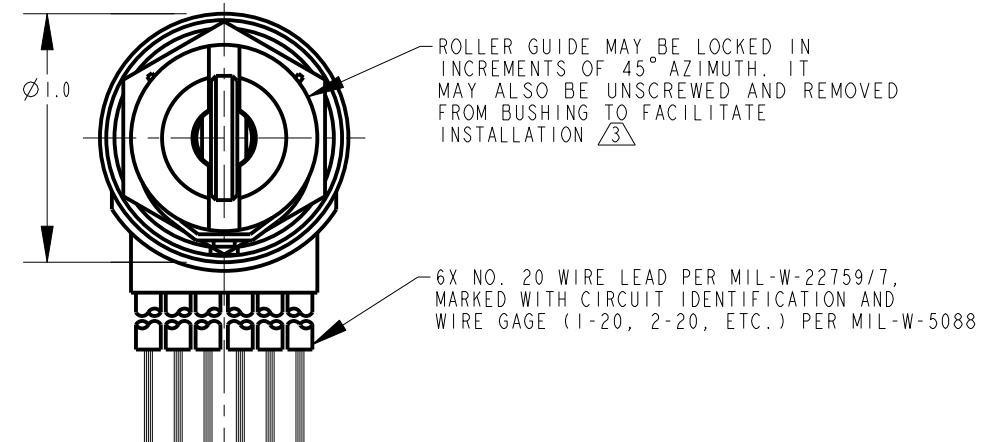
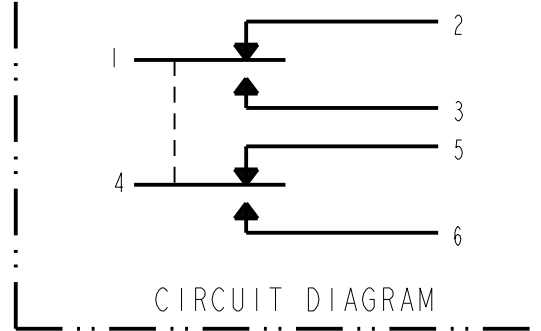
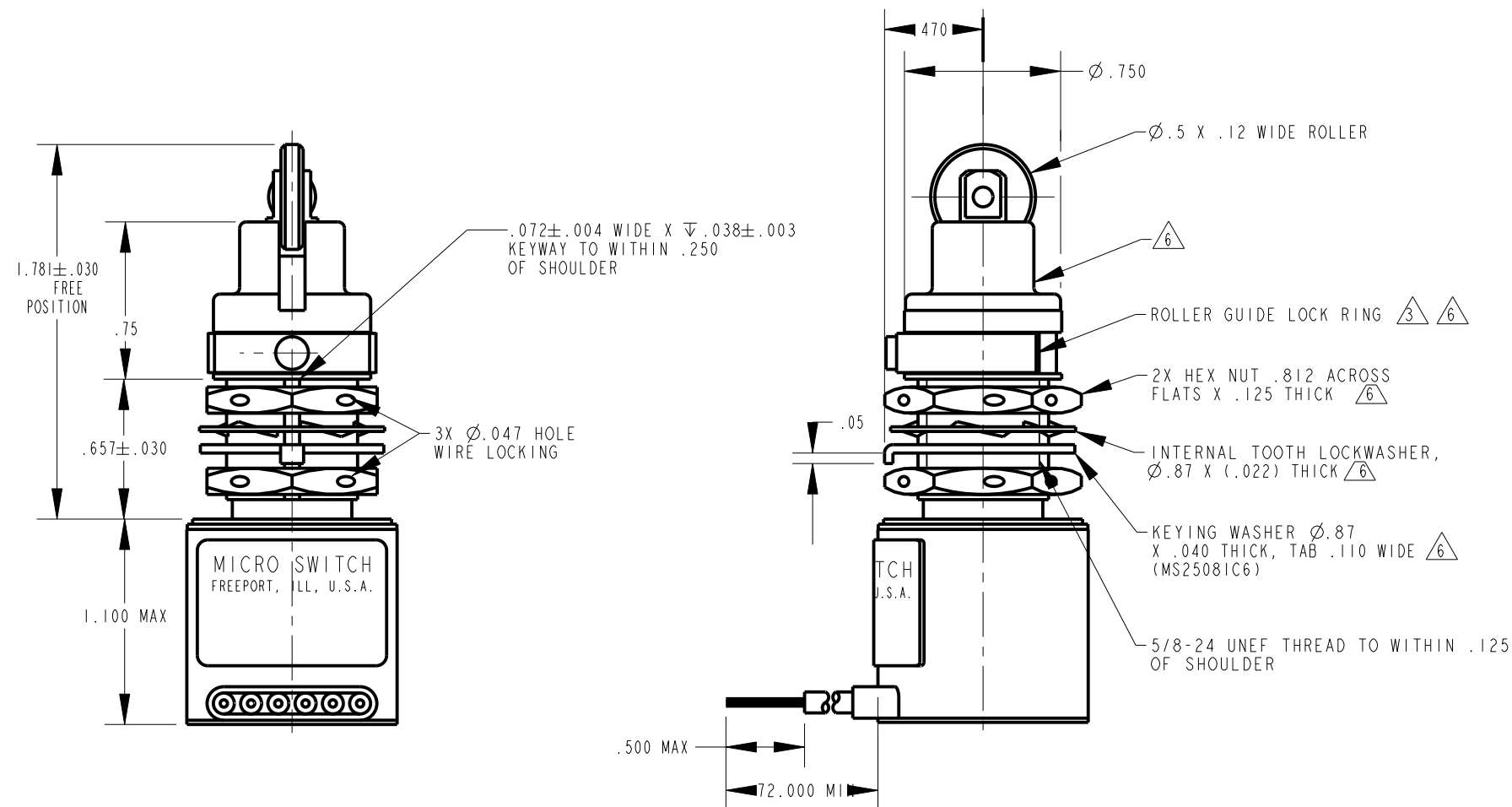


HONEYWELL  
PART NUMBER  
21EN266-6  
FAA-PMA

REV	DOCUMENT	CHANGED BY	CHECK
21	0006859	DVM 28JUL04	AK



SPECIFICATION DETAILS:				
STANDARD:	CONFORMS TO MS24331-1 (MIL-PRF-8805/40), EXCEPT AS NOTED			
CONSTRUCTION:				
ENCLOSURE DESIGN	RESILIENT SEAL PER MIL-PRF-8805, SYMBOL 4			
CONTACT MATERIAL & CONFIGURATION	SMOOTH SILVER CONTACTS			
CIRCUIT CONFIGURATION	2 SPDT			
TERMINATION	LEADWIRE PER MIL-W-22759/7			
WEIGHT	10.0 OZ MAX			
EXPOSED METALS	CORROSION RESISTANT STAINLESS STEEL			
ELECTRICAL CHARACTERISTICS:				
ELECTRICAL RATINGS	VOLTAGE	RESISTIVE	LOAD INDUCTIVE	MOTOR
-SEA LEVEL	28 VDC	4A	2A	4A
-50,000 FEET	28 VDC	4A	2A	4A
DIELECTRIC STRENGTH & INSULATION RESISTANCE	DIELECTRIC STRENGTH		INSULATION RESISTANCE	
	$\approx$ 60 Hz. FOR 5 SECONDS)		(500 VDC $\pm$ 10%)	
-BETWEEN TERMINALS AND EXPOSED NON-CURRENT CARRYING METAL	1000 V Rms, 500 $\mu$ A (MAX. LEAKAGE)		1000 Megohms MIN	
-BETWEEN TERMINALS OF MUTUALLY INSULATED CIRCUITS	.		.	
-BETWEEN ALL UNCONNECTED TERMINALS OF THE SAME POLE	.		.	
SWITCH RESISTANCE	N/A			
RECOMMENDATION OR USE IN APPLICATIONS LESS THAN .5 amps AND/OR 12 volts	NO $\Delta 4$			
MECHANICAL CHARACTERISTICS:				
CHARACTERISTICS:				
COINCIDENCE OF OPERATING AND RELEASING POINTS	.010 OF PLUNGER TRAVEL			
OPERATING FORCE	6-12 LBS			
FULL OVERTRAVEL FORCE	30 LB MAX			
RELEASE FORCE	4 LB MIN			
PRETRAVEL	.030 $\pm$ 010			
DIFFERENTIAL TRAVEL	.020 MAX			
OVERTRAVEL	.250 MIN			
MOUNTING STRENGTH	15 IN-LBS			
ACTUATOR STRENGTH	30 LBS APPLIES IN A DIRECTION TO CAUSE SWITCH ACTUATION			
LIFE:				
MECHANICAL LIFE	25,000 MIN. PER MIL-PRF-8805/40 $\Delta 1$			
ELECTRICAL LIFE AT FULL RATED LOAD	25,000 MIN. PER MIL-PRF-8805/40 $\Delta 1$			
ENVIRONMENTAL:				
TEMPERATURE RANGE	-55 C TO +85 C			
ALTITUDE RANGE	SEA LEVEL TO 50,000 FEET			
SHOCK	PER MIL-PRF-8805 SYMBOL M - 100 g			
VIBRATION	PER MIL-PRF-8805 SYMBOL I - 10-500 Hz. & 10 g peak			
MOISTURE RESISTANCE	PER MIL-PRF-8805			
THERMAL SHOCK	PER MIL-PRF-8805			
SALT SPRAY	PER MIL-PRF-8805			



- NOTES
- $\Delta 1$  LIFE RATINGS ARE PER MIL-PRF-8805 REQUIREMENTS. ACTUAL LIFE EXCEEDS RATED LIFE. CONTACT HONEYWELL-MICRO SWITCH FOR ADDITIONAL DATA
  - 2 - SWITCH SEALED PER MIL-PRF-8805 SYMBOL 4
  - $\Delta 3$  TO ADJUST ROLLER DIRECTION, REMOVE ROLLER GUIDE LOCK RING, SCREW ROLLER GUIDE DOWN AS FAR AS POSSIBLE, THEN UNSCREW TO DESIRED DIRECTION. SECURE BY REPLACING ROLLER GUIDE LOCK RING
  - $\Delta 4$  CONTACT HONEYWELL-MICRO SWITCH IF ADDITIONAL INFORMATION ON LOW ENERGY LOADS IS REQUIRED OR FOR HELP WITH SPECIFIC APPLICATIONS
  - 5 - CIRCUIT DIAGRAM, CATALOG LISTING, DATE CODE, FED. MFG. CODE AND FAA-PMA ARE SHOWN ON NAMEPLATE
  - $\Delta 6$  HARDWARE MAY BE PACKAGED UNASSEMBLED PER MIL-PRF-8805
  - $\Delta 7$  FOR MANUFACTURING DETAIL SEE ASSEMBLY DRAWING 21EN266-6 FOR FAA-PMA

DESIGN UNITS: INCH TOLERANCES UNLESS NOTED:	DRAWN GJW 25OCT00	<b>Honeywell</b>			
NO PLACE .X $\pm$	CHECK SAV 25OCT00				
ONE PLACE .X $\pm$ .030	THIS DRAWING COVERS A PROPRIETARY ITEM AND IS THE PROPERTY OF HONEYWELL. THIS DRAWING IS NOT TO BE COPIED OR USED WITHOUT THE PERMISSION OF HONEYWELL.		TITLE		
TWO PLACE .XX $\pm$ .015			SWITCH - ENCLOSED		
THREE PLACE .XXX $\pm$ .005	INTERPRET PER ANSI Y14.5M-1982 OTHER HONEYWELL ENGINEERING STANDARDS MAY APPLY	SIZE C	TYPE I	DRAWING NAME 21EN266-6	REV 21
FOUR PLACE .XXXX $\pm$	THIRD ANGLE PROJECTION	SCALE 2:1	SHEET 1 OF 1		
ANGLES X $\pm$	Pro/ENGINEER 2D				