

CT2051

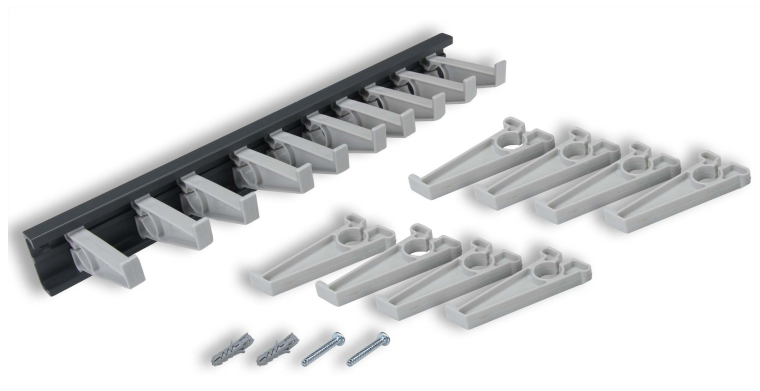
Wall Mount Lead Rack

Wall mounted lead rack, adjustable

Description

Adjustable wall mounted lead rack. Position the plastic hooks as needed.

- Holds 60 leads, minimum
- Aluminum rail, 14" (35cm) wide
- 18 adjustable plastic hooks
- Mounting hardware included



Technical data subject to change.

© Cal Test Electronics 2018.

caltestelectronics.com

Datasheet

All specifications apply to the unit after a temperature stabilization time of 20 minutes over an ambient temperature range of $25^{\circ}\text{C} \pm 5^{\circ}\text{C}$.

Specifications

RoHS (2011/65/EU)	Compliant
--------------------------	-----------

Specifications are subject to change without notice. To ensure the most current version of this manual, please download the current version from our website: caltestelectronics.com