



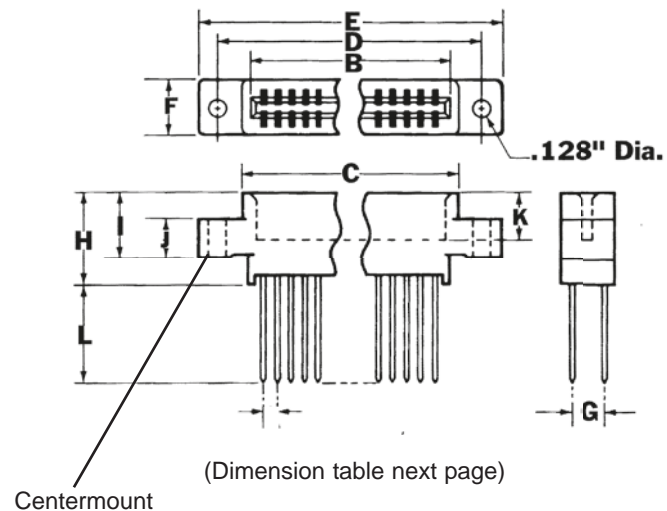
# PCB Accessories

## R600 Edge Connectors



This section contains parts and accessories for Vectorbord products. They are useful for board-level prototyping and breadboarding. Prototypes are created in various ways; by computer design or by hand - but with one thing in common: sooner or later, you have to make a physical board. It is at this stage that Vectorbord and these parts and accessories may be useful to you. They are selected for convenience and utility and they are readily available from your Vector distributors.

# Style 1



- Wire-Wrap .025" Sq. Posts
- Allows 3 level wraps
- Center Mount
- Use 28 to 32 AWG wire
- STD bus

Connectors

### Specifications

**Solder Type Insulator Material:**

Phenolic, UL-94V-0 or glass filled Diallylphthalate UL-94V-1 or Ryton R10 or equivalent

**Wire-Wrap Type Insulator:**

Phenolic, UL-94V-0 or glass filled Diallylphthalate UL-94V-1 or Polyester (VALOX) or equivalent UL-94V-0.

**Contact Material:**

Phosphor bronze QQ-B-750

**Contact Plating:**

.000010" gold over .000050" nickel

**Test Voltage:**

650 VAC

**Rated Current:**

3 AMPS

**Contact Res. Drop:**

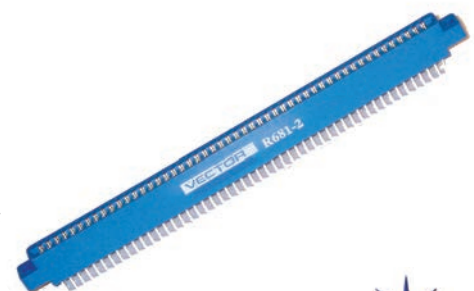
30 mV Max. @ rated current

**Insulation Resistance:**

5000 megohms nominal @ 500 VDC

**Operating Temperature:**

-65 to +105 degrees C





# PCB Accessories

## R600 Edge Connectors

### Style 2



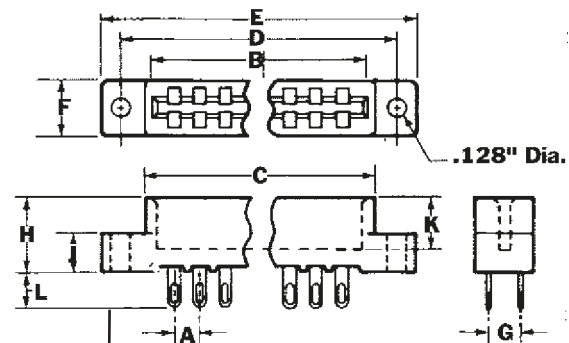
R636-2



R630



R644



R656-1



R680-2



R681



R681-3

- Solder tail (with eyelet) R656-1 Solder
- Solder eyelet type
- Flush Mount

Connectors

### Ordering Information

Part No.	No. of Contacts	Termination Type	Mounting Ears	Style #	A	B	C	D	E	F	G	H	I	J	K	L
R630	30	Solder Tail	Flush	2	.156"	2.504"	2.65"	2.938"	3.270"	.41"	.200"	.47"	n/a	.25"	.34"	.25"
R636-1	72	Wire-Wrap	Center	1	.100"	3.707"	3.88"	4.175"	4.475"	.41"	.200"	.62"	.55"	.25"	.34"	.65"
R636-2	72	Solder Tail	Flush	2	.100"	3.707"	3.88"	4.175"	4.475"	.41"	.200"	.47"	n/a	.25"	.34"	.25"
R644	44	Solder Tail	Flush	2	.156"	3.596"	3.75"	4.032"	4.360"	.41"	.200"	.47"	.25"	.25"	.265"	.25"
R644-2	44	Wire-Wrap	Center	1	.100"	2.300"	2.55"	2.850"	3.120"	.41"	.200"	.62"	.55"	.25"	.297"	.65"
R644-3C	44	Wire-Wrap	Center	1	.156"	3.596"	3.75"	4.032"	4.360"	.41"	.200"	.62"	.55"	.25"	.384"	.65"
R644-3F	44	Wire-Wrap	Flush	1	.156"	3.596"	3.75"	4.032"	4.360"	.41"	.200"	.62"	.55"	.25"	.384"	.65"
R656-1	56	Solder Tail	Flush	2	.125"	3.625"	3.79"	4.045"	4.336"	.41"	.200"	.47"	n/a	.25"	.34"	.25"
R656-2	56	Wire-Wrap	Center	1	.125"	3.625"	3.79"	4.045"	4.325"	.41"	.250"	.62"	.55"	.25"	.34"	.22"
R680-1	80	Wire-Wrap	Center	1	.125"	5.125"	5.29"	5.545"	5.805"	.41"	.250"	.62"	.55"	.25"	.34"	.65"
R680-2	80	Solder Tail	Center	2	.125"	5.125"	5.29"	5.545"	5.805"	.41"	.200"	.62"	.55"	.25"	.34"	.65"
R681-2	100	Wire-Wrap	Center	1	.125"	6.375"	6.54"	6.795"	7.065"	.41"	.250"	.47"	.55"	.25"	.34"	.22"
R681-3	100	Solder Tail	Center	2	.125"	6.375"	6.54"	6.795"	7.065"	.41"	.200"	.47"	n/a	.25"	.34"	.25"

Specification subject to change without notice

