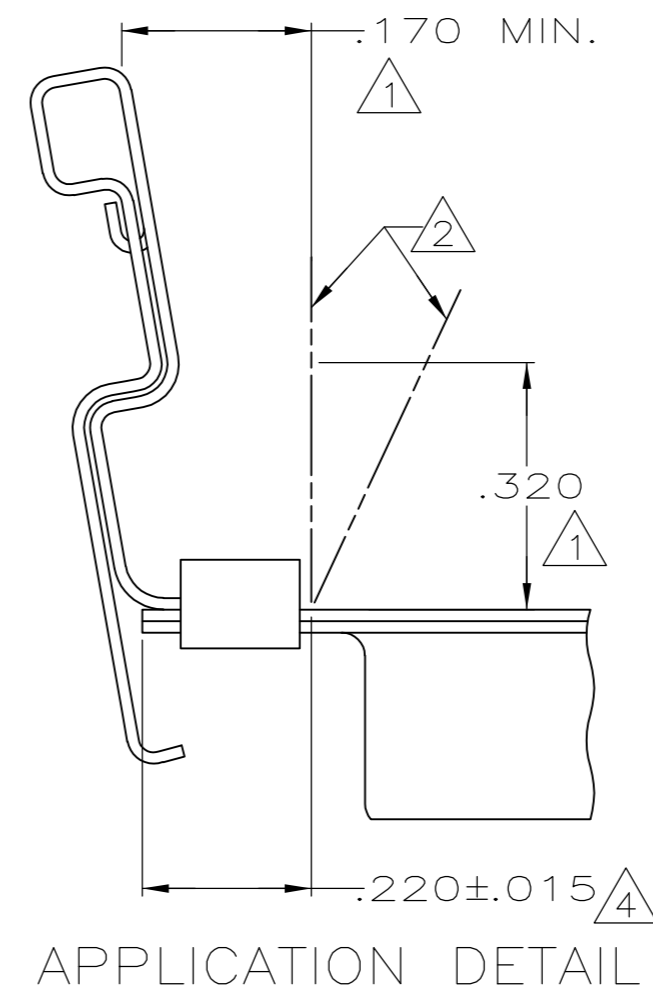
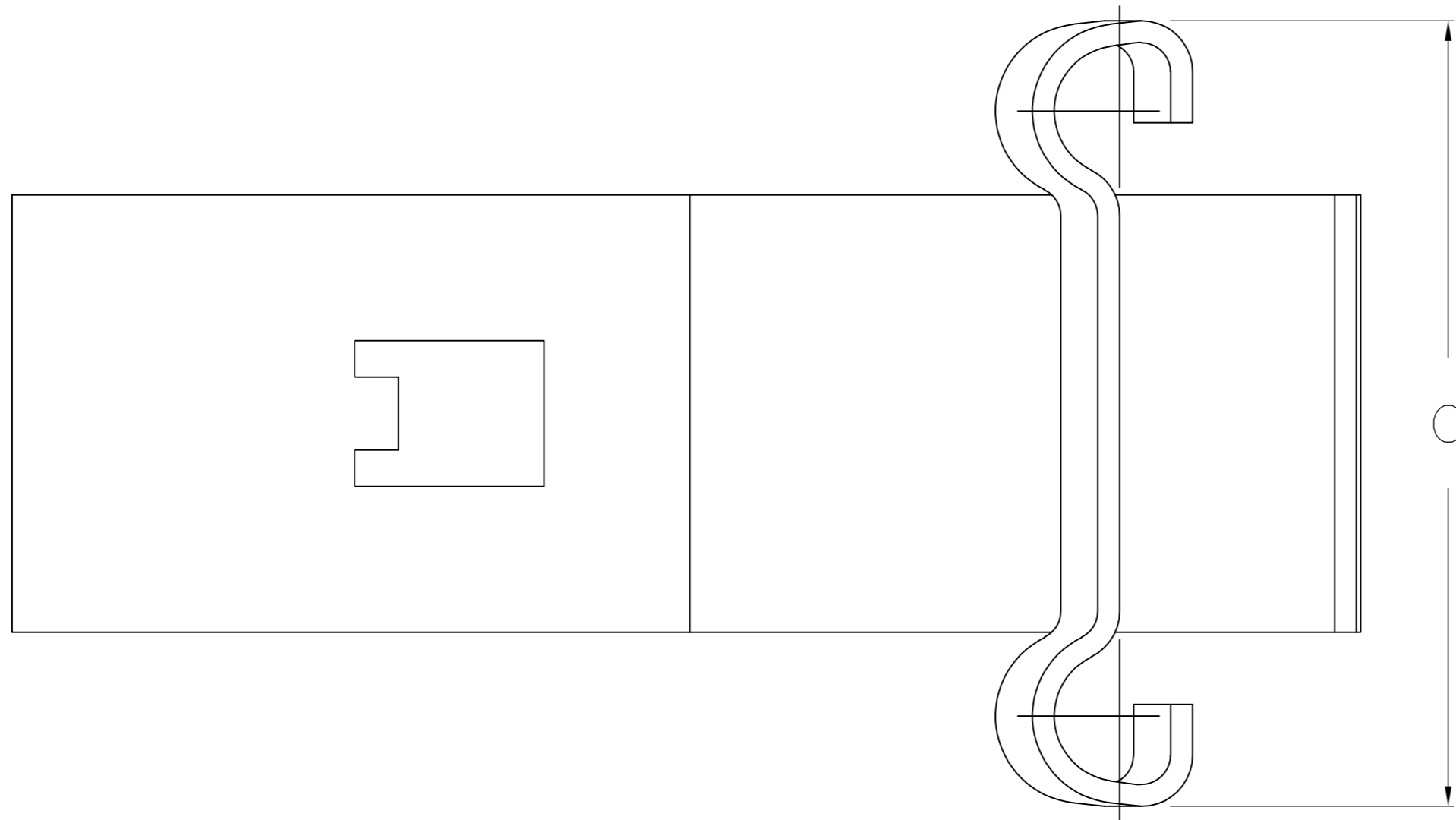
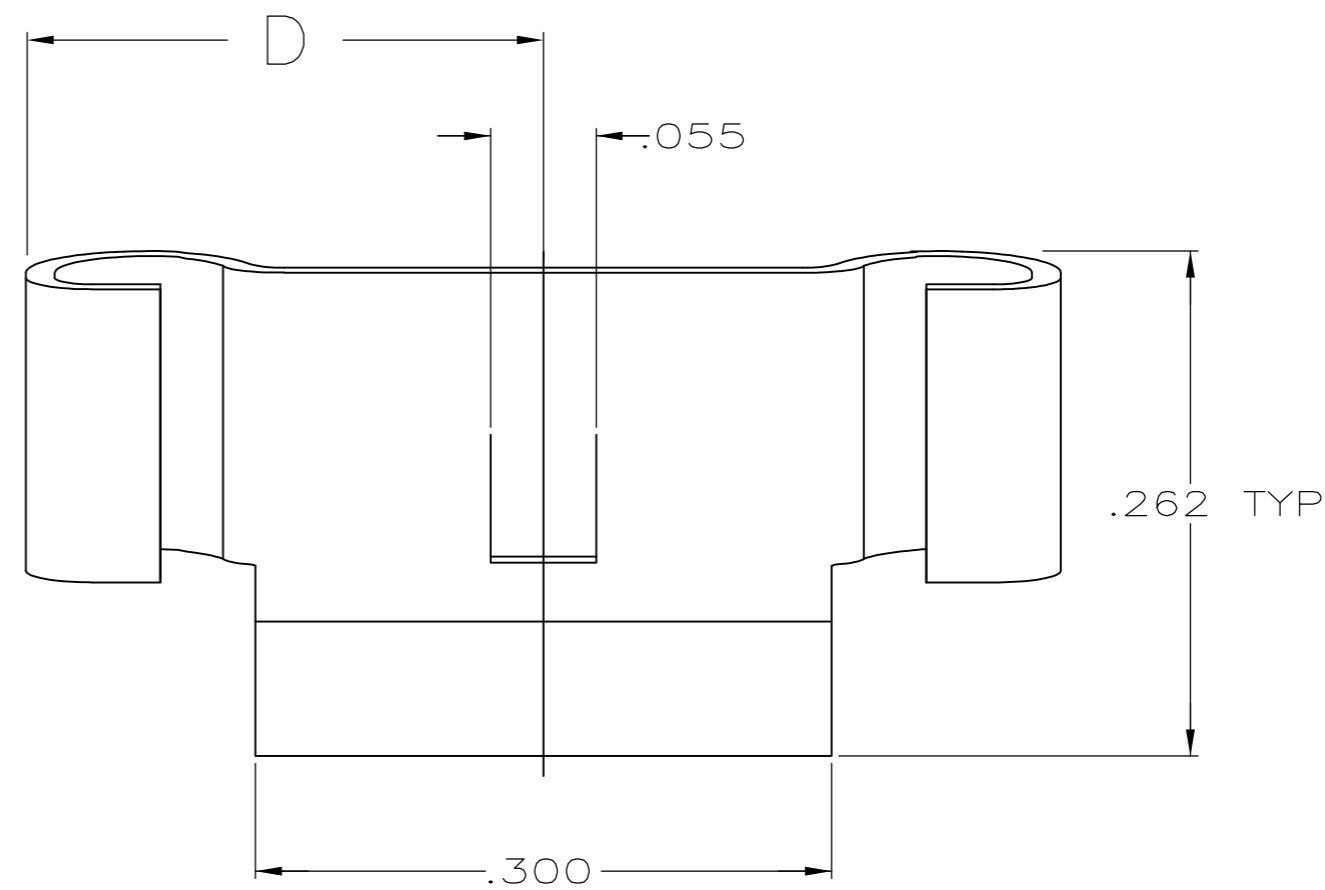
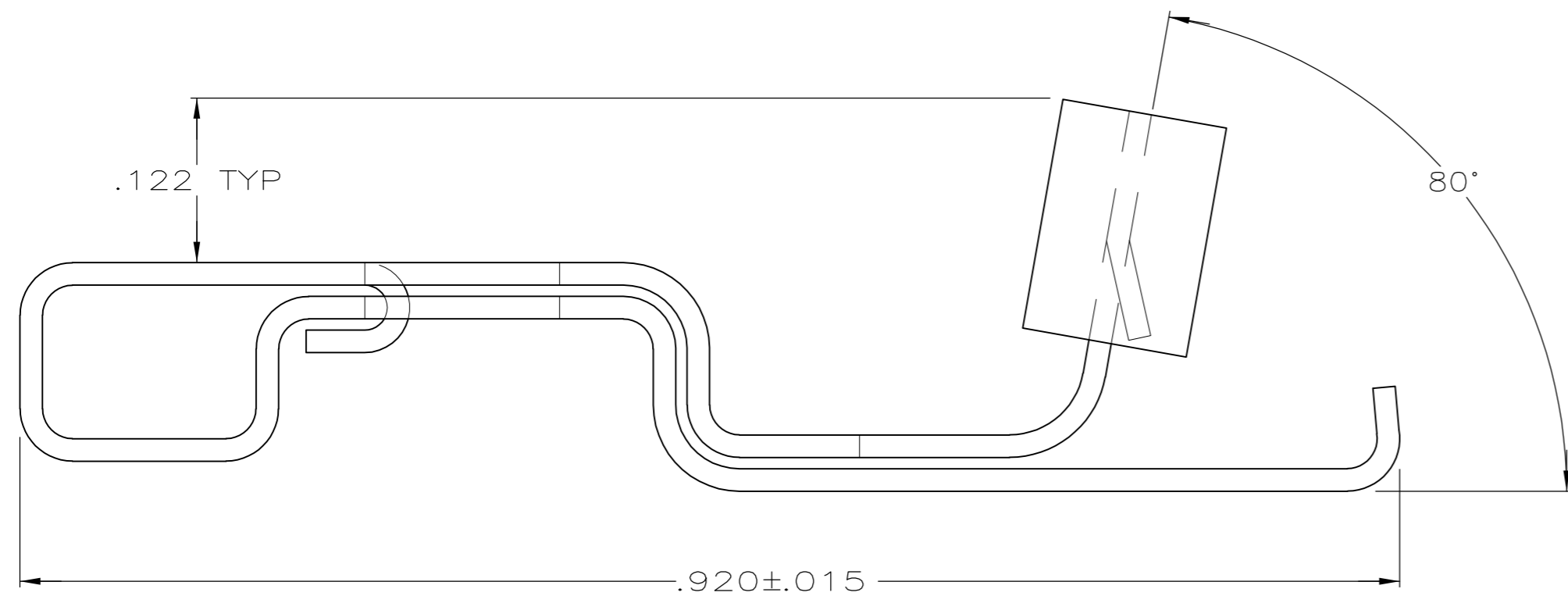


THIS DRAWING IS UNPUBLISHED. RELEASED FOR PUBLICATION
 © COPYRIGHT - By - ALL RIGHTS RESERVED.

REVISIONS				DATE	DWN	APVD
P	LTR	DESCRIPTION				
F1		REVISED PER ECO-11-004835		11MAR11	RK	HMR



APPLICATION DETAIL



- 1 FOR SATISFACTORY OPERATION THESE DIMENSIONS MUST BE MAINTAINED, .170 DIMENSION SHOULD BE MEASURED AT HEIGHT OF .320 MIN.
- 2 SPRING LATCH ACCOUNTS FOR DESIGN VARIATIONS IN THE ENVELOPE OF POST MOLDED STRAIN RELIEFS.
- 3 WHEN ORDERING SPRING LATCHES SPECIFY NUMBER OF CONNECTORS, QUANTITY SHIPPED WILL BE BASED ON 2 SPRING LATCHES REQUIRED PER CONNECTOR.
- 4 MEASURED FROM END OF CONNECTOR FLANGE TO END OF TAB ON SPRING LATCH.

OBSELETE	D	C	KIT PACKAGING	PART NO
	.325	.650	BULK 3	745779-6
	.325	.650	2 PIECE UNIT	745779-5
	.270	.540	BULK 3	745779-3
	.270	.540	2 PIECE UNIT	745779-2

THIS DRAWING IS A CONTROLLED DOCUMENT.		DWN J.GERACE 02-24-83	TE TE Connectivity	
DIMENSIONS: INCHES		CHK J.GERACE 02-24-83		
TOLERANCES UNLESS OTHERWISE SPECIFIED:		APVD R.LEGGETT 02-24-83	NAME SPRING LATCH, 2 PIECE, AMPLIMITE™	
0 PLC ± -		PRODUCT SPEC	SIZE A2 CAGE CODE 00779 C=745779	
1 PLC ± -		APPLICATION SPEC	RESTRICTED TO	
2 PLC ± -			SCALE 10:1 SHEET 1 OF 1 REV F1	
3 PLC ± .010				
4 PLC ± -				
ANGLES ± 3°				
MATERIAL FINISH		WEIGHT -		
STAINLESS STEEL -		CUSTOMER DRAWING		