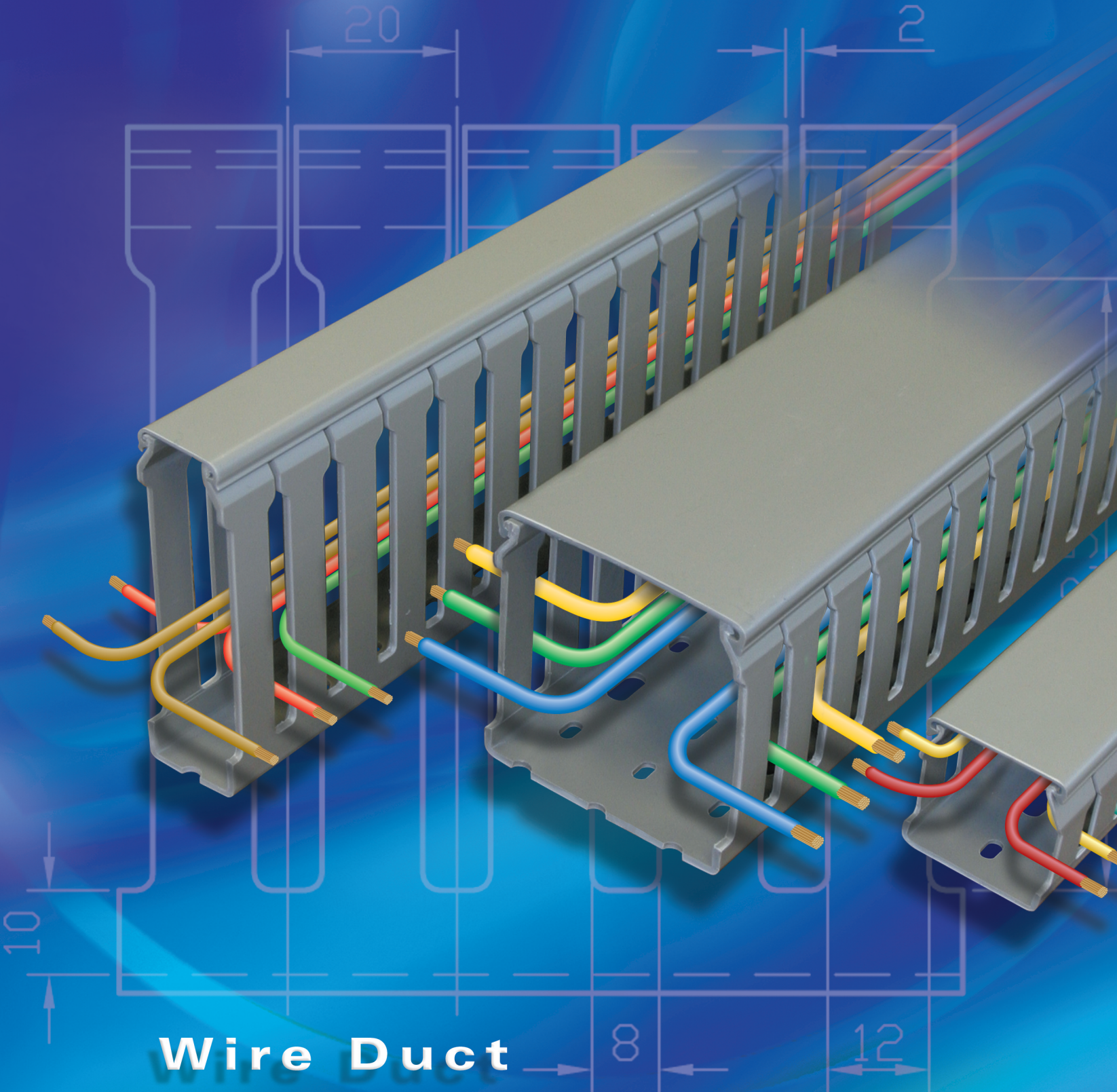


Altech Corp.®

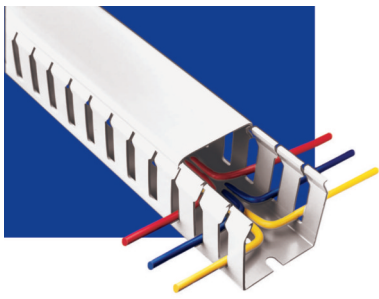
Serving the Automation & Control Industry since 1984



Quality
Endorsed
Company



Wire Duct



Standard Slot

Supplied with lid

nominal size w x h inches	external dimensions		part no. selection				standard pack	
	width inches (mm)	height inches (mm)	gray PVC	white PVC	black PVC	blue PVC	no. of lengths 6 1/2' each	total feet
1" x 1 1/2"	1.14 (29)	1.61 (41)	B25x40S-R	B25x40S/W-R	B25x40S/BL-R	–	12	78
1" x 2"	1.14 (29)	2.13 (54)	B25x60S-R	B25x60S/W-R	B25x60S/BL-R	B25x60S/BU-R	12	78
1" x 3"	1.14 (29)	3.11 (79)	B25x80S-R	B25x80S/W-R	B25x80S/BL-R	B25x80S/BU-R	8	52
1" x 4"	1.18 (30)	4.13 (105)	B25x100S-R	B25x100S/W-R	B25x100S/BL-R	B25x100S/BU-R	8	52
1 1/2" x 1 1/2"	1.61 (41)	1.61 (41)	B40x40S-R	B40x40S/W-R	B40x40S/BL-R	–	12	78
1 1/2" x 2"	1.61 (41)	2.13 (54)	B40x60S-R	B40x60S/W-R	B40x60S/BL-R	B40x60S/BU-R	8	52
1 1/2" x 3"	1.54 (39)	3.11 (79)	B40x80S-R	B40x80S/W-R	B40x80S/BL-R	B40x80S/BU-R	8	52
1 1/2" x 4"	1.69 (43)	4.13 (105)	B40x100S-R	B40x100S/W-R	B40x100S/BL-R	B40x100S/BU-R	8	52
2" x 1"	2.13 (54)	1.10 (28)	B60x25S-R	B60x25S/W-R	B60x25S/BL-R	–	12	78
2" x 1 1/2"	2.13 (54)	1.61 (41)	B60x40S-R	B60x40S/W-R	B60x40S/BL-R	–	8	52
2" x 2"	2.13 (54)	2.13 (54)	B60x60S-R	B60x60S/W-R	B60x60S/BL-R	B60x60S/BU-R	8	52
2" x 3"	2.17 (55)	3.11 (79)	B60x80S-R	B60x80S/W-R	B60x80S/BL-R	B60x80S/BU-R	8	52
2" x 4"	2.20 (56)	4.13 (105)	B60x100S-R	B60x100S/W-R	B60x100S/BL-R	–	4	26
3" x 1 1/2"	3.15 (80)	1.61 (41)	B80x40S-R	B80x40S/W-R	B80x40S/BL-R	–	8	52
3" x 2"	3.07 (78)	2.13 (54)	B80x60S-R	B80x60S/W-R	B80x60S/BL-R	–	8	52
3" x 3"	3.15 (80)	3.15 (80)	B80x80S-R	B80x80S/W-R	B80x80S/BL-R	B80x80S/BU-R	8	52
3" x 4"	3.15 (80)	4.13 (105)	B80x100S-R	B80x100S/W-R	B80x100S/BL-R	B80x100S/BU-R	4	26
4" x 2"	4.21 (107)	2.13 (54)	B100x60S-R	B100x60S/W-R	B100x60S/BL-R	–	4	26
4" x 3"	4.21 (107)	3.15 (80)	B100x80S-R	B100x80S/W-R	B100x80S/BL-R	B100x80S/BU-R	4	26
4" x 4"	4.21 (107)	4.09 (104)	B100x100S-R	B100x100S/W-R	B100x100S/BL-R	B100x100S/BU-R	4	26
4" x 5"	4.21 (107)	5.12 (130)	B100x130S-R	B100x130S/W-R	B100x130S/BL-R	–	4	26
5" x 3"	5.16 (131)	3.07 (78)	B130x80S-R	B130x80S/W-R	B130x80S/BL-R	–	4	26

MATERIAL

self extinguishing PVC

SERVICE TEMPERATURE

+5° F to +140° F (-15° C to +60° C)

STANDARDS

base slots to DIN 43659

STANDARD COLORS

gray, white, black & blue

FLAMMABILITY

UL94 V-O rated material



Serving the Automation & Control Industry Since 1984

Altech Corp® • 908.806.9400 • 908.806.9490 (fax) • www.altechcorp.com



Thin Slot

Supplied with lid

nominal size w x h inches	external dimensions		part no. selection			carton quantity	
	width inches (mm)	height inches (mm)	gray PVC	white PVC	black PVC	no. of lengths 6 1/2' each	total feet
1" x 1 1/2"	1.14 (29)	1.61(41)	B25x40T-R	B25x40T/W-R	B25x40T/BL-R	12	78
1" x 2"	1.14 (29)	2.13 (54)	B25x60T-R	B25x60T/W-R	B25x60T/BL-R	12	78
1" x 3"	1.14 (29)	3.11 (79)	B25x80T-R	B25x80T/W-R	B25x80T/BL-R	8	52
1" x 4"	1.18 (30)	4.13 (105)	B25x100T-R	B25x100T/W-R	B25x100T/BL-R	8	52
1 1/2" x 1 1/2"	1.61 (41)	1.61 (41)	B40x40T-R	B40x40T/W-R	B40x40T/BL-R	12	78
1 1/2" x 2"	1.61 (41)	2.13 (54)	B40x60T-R	B40x60T/W-R	B40x60T/BL-R	8	52
1 1/2" x 3"	1.61 (41)	3.11 (79)	B40x80T-R	B40x80T/W-R	B40x80T/BL-R	8	52
1 1/2" x 4"	1.69 (43)	4.13 (105)	B40x100T-R	B40x100T/W-R	B40x100T/BL-R	8	52
2" x 1 1/2"	2.20 (56)	1.61 (41)	B60x40T-R	B60x40T/W-R	B60x40T/BL-R	8	52
2" x 2"	2.13 (54)	2.13 (54)	B60x60T-R	B60x60T/W-R	B60x60T/BL-R	8	52
2" x 3"	2.17 (55)	3.11 (79)	B60x80T-R	B60x80T/W-R	B60x80T/BL-R	8	52
2" x 4"	2.20 (56)	4.13 (105)	B60x100T-R	B60x100T/W-R	B60x100T/BL-R	4	26
3" x 1 1/2"	3.15 (80)	1.61 (41)	B80x40T-R	B80x40T/W-R	B80x40T/BL-R	8	52
3" x 2"	3.07 (78)	2.13 (54)	B80x60T-R	B80x60T/W-R	B80x60T/BL-R	8	52
3" x 3"	3.15 (80)	3.15 (80)	B80x80T-R	B80x80T/W-R	B80x80T/BL-R	8	52
3" x 4"	3.15 (80)	4.13 (105)	B80x100T-R	B80x100T/W-R	B80x100T/BL-R	4	26
4" x 2"	4.21 (107)	2.13 (54)	B100x60T-R	B100x60T/W-R	B100x60T/BL-R	4	26
4" x 3"	4.21 (107)	3.15 (80)	B100x80T-R	B100x80T/W-R	B100x80T/BL-R	4	26
4" x 4"	4.21 (107)	4.09 (104)	B100x100T-R	B100x100T/W-R	B100x100T/BL-R	4	26

MATERIAL

self extinguishing PVC

SERVICE TEMPERATURE

+5° F to +140° F (-15° C to +60° C)

STANDARDS

base slots to DIN 43659

STANDARD COLORS

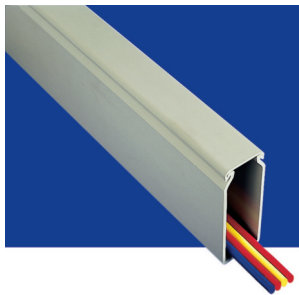
gray, white & black

FLAMMABILITY

UL94 V-O rated material



ISO9001:2000 Certified



Unslotted Wall

Supplied with lid

nominal size w x h inches	external dimensions		part no. selection			carton quantity	
	width inches (mm)	height inches (mm)	gray PVC	white PVC	black PVC	no. of lengths 6 1/2' each	total feet
1" x 1 1/2"	1.14 (29)	1.61 (41)	B25x40US-R	B25x40US/W-R	B25x40US/BL-R	12	78
1" x 2"	1.14 (29)	2.13 (54)	B25x60US-R	B25x60US/W-R	B25x60US/BL-R	12	78
1" x 3"	1.14 (29)	3.11 (79)	B25x80US-R	B25x80US/W-R	B25x80US/BL-R	8	52
1" x 4"	1.18 (30)	4.13 (105)	B25x100US-R	B25x100US/W-R	B25x100US/BL-R	8	52
1 1/2" x 1 1/2"	1.61 (41)	1.61 (41)	B40x40US-R	B40x40US/W-R	B40x40US/BL-R	12	78
1 1/2" x 2"	1.61 (41)	2.13 (54)	B40x60US-R	B40x60US/W-R	B40x60US/BL-R	8	52
1 1/2" x 3"	1.54 (39)	3.11 (79)	B40x80US-R	B40x80US/W-R	B40x80US/BL-R	8	52
1 1/2" x 4"	1.69 (43)	4.13 (105)	B40x100US-R	B40x100US/W-R	B40x100US/BL-R	8	52
2" x 1"	2.13 (54)	1.10 (28)	B60x25US-R	B60x25US/W-R	B60x25US/BL-R	12	78
2" x 1 1/2"	2.13 (54)	1.61 (41)	B60x40US-R	B60x40US/W-R	B60x40US/BL-R	8	52
2" x 2"	2.13 (54)	2.13 (54)	B60x60US-R	B60x60US/W-R	B60x60US/BL-R	8	52
2" x 3"	2.17 (55)	3.11 (79)	B60x80US-R	B60x80US/W-R	B60x80US/BL-R	8	52
2" x 4"	2.20 (56)	4.13 (105)	B60x100US-R	B60x100US/W-R	B60x100US/BL-R	4	26
3" x 1 1/2"	3.15 (80)	1.61 (41)	B80x40US-R	B80x40US/W-R	B80x40US/BL-R	8	52
3" x 2"	3.07 (78)	2.13 (54)	B80x60US-R	B80x60US/W-R	B80x60US/BL-R	8	52
3" x 3"	3.15 (80)	3.15 (80)	B80x80US-R	B80x80US/W-R	B80x80US/BL-R	8	52
3" x 4"	3.15 (80)	4.13 (105)	B80x100US-R	B80x100US/W-R	B80x100US/BL-R	4	26
4" x 2"	4.21 (107)	2.13 (54)	B100x60US-R	B100x60US/W-R	B100x60US/BL-R	4	26
4" x 3"	4.21 (107)	3.15 (80)	B100x80US-R	B100x80US/W-R	B100x80US/BL-R	4	26
4" x 4"	4.21 (107)	4.09 (104)	B100x100US-R	B100x100US/W-R	B100x100US/BL-R	4	26
4" x 5"	4.21 (107)	5.12 (130)	B100x130US-R	B100x130US/W-R	B100x130US/BL-R	4	26
5" x 3"	5.16 (131)	3.07 (78)	B130x80US-R	B130x80US/W-R	B130x80US/BL-R	4	26

MATERIAL

self extinguishing PVC

SERVICE TEMPERATURE

+5° F to +140° F (-15° C to +60° C)

STANDARDS

base slots to DIN 43659

STANDARD COLORS

gray, white & black

FLAMMABILITY

UL94 V-O rated material



A Leading Supplier For Over Twenty Years

Altech Corp[®] • 908.806.9400 • 908.806.9490 (fax) • www.altechcorp.com

Product Features

The Panel building market has very specific needs. This unique cable management system developed specifically for use within cabinets and control panels. Select Standard, Thin, Closed Slot and Unslotted depending on the application. Available in a number of sizes and colors, manufactured in standard PVC material.

LID RETENTION

Friction bead on wider trunking provides excellent lid retention to combat vibration

BREAK-OUT

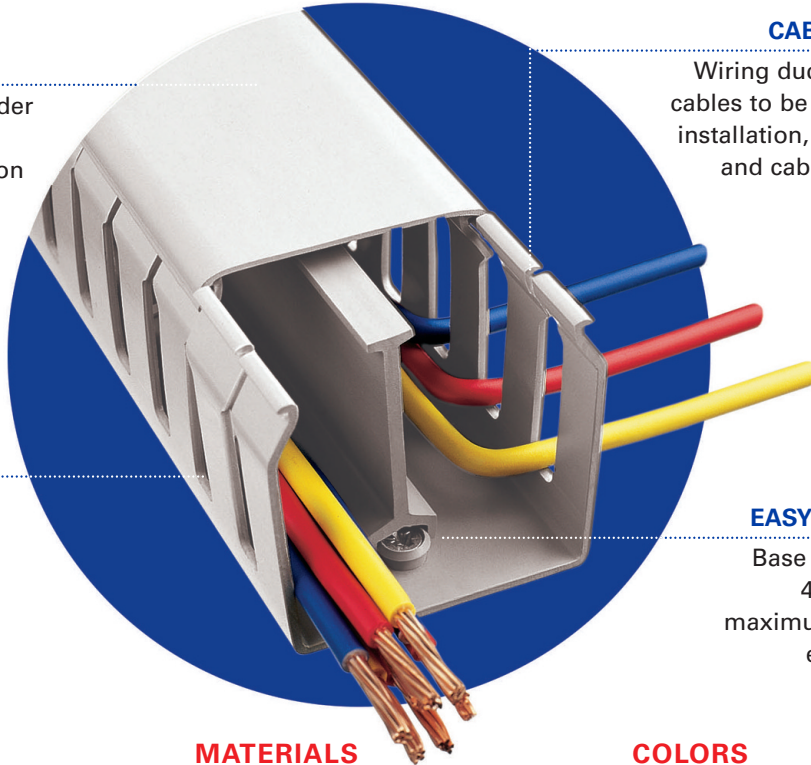
Fingers can be removed easily without the use of cutting tools

CABLE RETENTION

Wiring duct design allows cables to be retained during installation, making routing and cable termination a simple process

EASY INSTALLATION

Base slots are to DIN 43659, providing maximum flexibility for easy installation



SIZE RANGE

- Wide range of sizes to cater to a broad spectrum of requirements
- New larger sizes with narrower profiles to reduce panel footprint

MATERIALS

- The standard range is manufactured using self extinguishing PVC

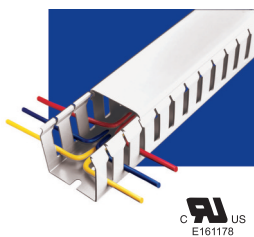
COLORS

- Gray, white and black are standard
- Blue is offered for intrinsically safe wiring applications
- Other colors available

Standard Wiring Duct

PVC provides a lightweight self extinguishing wiring duct with excellent rigidity and performance characteristics.

Standard Slot



- Wide fingers giving additional cable support
- Terminated wires can be re-routed easily
- 0.79" slot pitch
- 0.31" slot width
- 22 sizes, available in gray, white, black or blue

Unslotted



- Ideal where no break-outs are required or side wall access is infrequent
- Complete cable protection
- 22 sizes, in either gray, white or black

Thin Slot



- Ideal for use with slimmer terminal blocks where more access is required
- Improves appearance of panels with cables out in best position
- 0.39" slot pitch
- 0.16" slot width
- 19 sizes in a choice of gray, white or black

Serving the Automation & Control Industry Since 1984

Altech Corp® • 908.806.9400 • 908.806.9490 (fax) • www.altechcorp.com

Altech Corp.®

Quality
Endorsed
Company



ISO 9001:2008
CERTIFICATE



Altech Search
Google™ Custom Search

- Home
- Stock Check
- Distributors
- Information
- News
- Contact
- Rep/Dist Login
- Altech Mexico

WEB TOOLS

- Product Crossings
- Request for Quote
- Sample Request
- Catalog Request

PRODUCT MENU

- Circuit Protection / Control >
- Connectors >
- Enclosures >
- European Spare Parts >
- Foot Switches
- Interface Modules >
- Power Supplies
- Push Buttons & Pilot Lights >
- Relays >
- Sensors >
- Terminal Blocks >
- Tower Lights
- Wire & Cable Management >
- Home

New Products and Promotions

Serving the Automation & Control Industry Since 1984

Circuit Protection

 Circuit Protection Devices	 Busbar and Power Distribution	 Contactors, Overload Relays, Manual Motor Starters	 Motor Disconnect Switches	 European Fuses
--	---	--	---	--

Connectors

 Industrial Rectangular Connectors	 Pin & Sleeve Devices	 Receptacles
---	--	---

Foot Switches

 Foot Switches

Sensors

 Inductive Proximity Sensors

Enclosures

 Industrial Enclosures	 DIN Enclosures
---	--

Modules & Relays

 Interface Modules	 Safety Relays	 Slimline Relays
---	---	---

Power Supplies

 Power Supplies
--

Push Buttons

 22 & 30 mm Push Buttons

DIN Rail

 DIN Rail
--

Wire & Cable Management

 Liquid Tight Strain Reliefs/Corrugated Tubes	 Wire Duct
--	---

Terminal Blocks

 Din Rail Terminal Blocks	 Panel Mount Terminal Blocks	 Printed Circuit Board Terminal Blocks	 Eurostrips	 Distribution Blocks
--	---	---	--	---

Miscellaneous

 Ferrules	 Custom Assembly	 Marking & Engraving Systems	 Power Semi-conductors	 European Spare Parts
--	---	---	---	--

Altech Corporation
35 Royal Road
Flemington, NJ 08822-6000
P 908.806.9400 • F 908.806.9490
www.altechcorp.com

Altech Corp.® 555B-052013-5M
Printed July 2013

