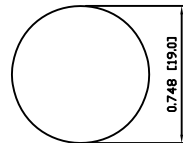


SUGGESTED PANEL CUTOUT



MAXIMUM PANEL THICKNESS: 0.472 [12.0mm]

SCHEMATIC



SPECIFICATIONS

FUNCTION:  
1PNO OFF-ON + 1PNC ON-OFF

RATING:  
2A 24VDC

CONTACT RESISTANCE:  
Initial: 50mΩ Max. at 1A 12VDC

INSULATION RESISTANCE:  
1,000MΩ Min. at 500VDC

DIELECTRIC STRENGTH:  
1,000VAC Min. for 1 Minute

ELECTRICAL LIFE:  
30,000 Cycles

MECHANICAL LIFE:  
1,000,000 Cycles

TEMPERATURE:  
Operating: -25°C to 55°C

APPROVALS:  
**RoHS**  
COMPLIANT

MATERIALS

BUSHING:  
Stainless Steel (304)

BASE:  
Polybutylene Terephthalate (PBT), UL94 V-2

RING:  
Polycarbonate

CYLINDER:  
Zinc

PIN:  
Brass

PIN SPRING:  
Copper Alloy

HARDWARE:  
Nickel Plated Brass (H59)

INNER ASSEMBLY:  
Polyamide 6/6 (PA66)  
Polyoxymethylene (POM)  
Brass (H59)  
Copper Alloy

SPRING:  
Steel (C18Ni9)

CONTACTS:  
Silver

TERMINALS:  
Silver Plated Brass (H59)

O-RING:  
Nitrile Butadiene Rubber (NBR)

KEY:  
Nickel Plated Brass

COLORS AND FINISH

BEZEL:  
Stainless Steel  
Polished Finish

CYLINDER:  
Zinc  
Polished Finish

RING:  
Red



EXPLODED VIEW

ASSEMBLED VIEW

BODY	A	11/03/14	CAB
COLORS	A	11/03/14	CAB
MATERIALS	A	11/03/14	CAB
SPECIFICATIONS	A	11/03/14	CAB
REFERENCE	REV.	DATE	BY

THE INFORMATION CONTAINED IN THIS DOCUMENT IS PROPRIETARY TO E-SWITCH AND IS NOT TO BE COPIED OR TRANSFERRED

A	INITIAL RELEASE	19755	11/03/15	CAB
REV.	DESCRIPTION	PCR	DATE	DRAWN BY

DIMENSIONS	
INCHES [MILLIMETERS]	
GENERAL TOLERANCES	
±0.008 [±0.2] / ±1'	
SCALE	PROJECTION
DRAWING NOT TO SCALE	1st Angle

E-SWITCH		LAMB INDUSTRIES	
TITLE			
PV4K2T0S9			
SCALE	ITEM NUMBER	DATE	REVISION
DRAWING NOT TO SCALE	52-PV4K2T0S9	MARCH 15, 2011	A