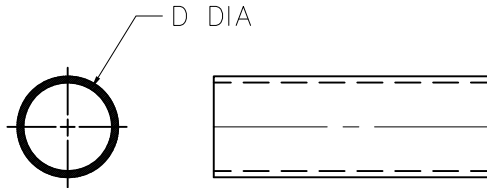
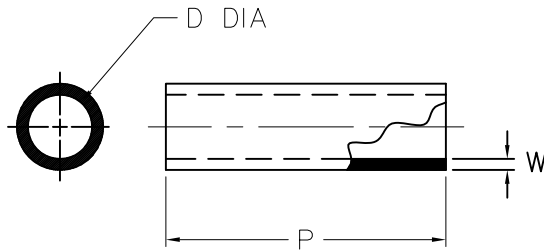


| REVISIONS | | |
|-----------|-------------------------------|------------|
| LTR | DESCRIPTION | DATE |
| R | REVISED PER ECO-11-003178 | 02/14/2011 |
| S | REVISED DWG PER ECO-11-014498 | 07/13/2011 |



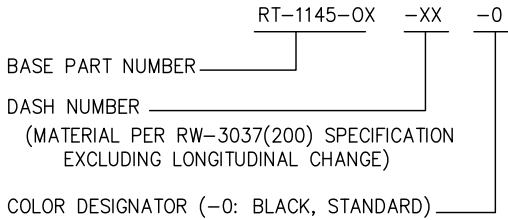
AS SUPPLIED



AFTER UNRESTRICTED RECOVERY

NOTES:

- ALL DIMENSIONS ARE IN INCHES
- DIMENSIONS APPEARING IN TABLE ARE AS FOLLOWS:
 a - AS SUPPLIED
 b - AFTER UNRESTRICTED RECOVERY
- ADD DASH NUMBER AS SUFFIX TO BASE PART NUMBER TO SPECIFY ID AND LENGTH REQUIRED
- ORDERING INFORMATION:



⚠ RT-1145-OX-100-0 HAS ADHESIVE S-1337 LINED ON INSIDE OF TUBING

TABLE OF DIMENSIONS

| PART DESCRIPTION | D | | P REF b | W b | PART DESCRIPTION | D | | P REF b | W b |
|------------------|-------|-------|---------|-------------|------------------|-------|-------|---------|-------------|
| | MIN a | MAX b | | | | MIN a | MAX b | | |
| RT-1145-OX-7-0 | 2.67 | .75 | 2.50 | .055 - .095 | RT-1145-OX-30-0 | 1.00 | .25 | 1.00 | .033 - .053 |
| RT-1145-OX-9-0 | 2.67 | .75 | 1.50 | .055 - .095 | RT-1145-OX-32-0 | 2.00 | .50 | 2.50 | .045 - .085 |
| RT-1145-OX-11-0 | 2.37 | .63 | 6.00 | .050 - .090 | RT-1145-OX-34-0 | 2.00 | .50 | 1.50 | .045 - .085 |
| RT-1145-OX-12-0 | 2.37 | .63 | 2.50 | .050 - .090 | RT-1145-OX-35-0 | 2.00 | .50 | 1.00 | .045 - .085 |
| RT-1145-OX-14-0 | 2.37 | .63 | 1.50 | .050 - .090 | RT-1145-OX-36-0 | 2.67 | .75 | 4.00 | .055 - .095 |
| RT-1145-OX-15-0 | 2.37 | .63 | 1.00 | .050 - .090 | RT-1145-OX-37-0 | 2.37 | .63 | 4.00 | .050 - .090 |
| RT-1145-OX-16-0 | 1.37 | .38 | 3.00 | .042 - .066 | RT-1145-OX-38-0 | 2.00 | .50 | 4.00 | .045 - .085 |
| RT-1145-OX-17-0 | 1.37 | .38 | 2.50 | .042 - .066 | RT-1145-OX-39-0 | 1.37 | .38 | 4.00 | .042 - .066 |
| RT-1145-OX-18-0 | 1.37 | .38 | 2.00 | .042 - .066 | RT-1145-OX-40-0 | 1.25 | .31 | 4.00 | .035 - .059 |
| RT-1145-OX-19-0 | 1.37 | .38 | 1.50 | .042 - .066 | RT-1145-OX-41-0 | 1.00 | .25 | 4.00 | .033 - .053 |
| RT-1145-OX-20-0 | 1.37 | .38 | 1.00 | .042 - .066 | RT-1145-OX-75-0 | 1.50 | .38 | 6.00 | .042 - .066 |
| RT-1145-OX-22-0 | 1.25 | .31 | 2.50 | .035 - .059 | RT-1145-OX-76-0 | 1.25 | .31 | 6.00 | .035 - .059 |
| RT-1145-OX-24-0 | 1.25 | .31 | 1.50 | .035 - .059 | RT-1145-OX-97-0 | 1.75 | .38 | 6.00 | .042 - .066 |
| RT-1145-OX-25-0 | 1.25 | .31 | 1.00 | .035 - .059 | RT-1145-OX-98-0 | 2.00 | .50 | 10.00 | .045 - .085 |
| RT-1145-OX-26-0 | 1.00 | .25 | 3.00 | .033 - .053 | RT-1145-OX-100-0 | 3.00 | 1.00 | 4.00 | .090 - .130 |
| RT-1145-OX-27-0 | 1.00 | .25 | 2.50 | .033 - .053 | (SEE ⚠) | | | | |
| RT-1145-OX-29-0 | 1.00 | .25 | 1.50 | .033 - .053 | RT-1145-OX-132 | 0.38 | 0.13 | 2.00 | .028 - .042 |
| | | | | | RT-1145-OX-133 | 0.50 | 0.19 | 2.00 | .028 - .042 |

Raychem Molded Parts
CUSTOMER DRAWING



| | | |
|--|-----------------------------|--|
| UNLESS OTHERWISE SPECIFIED DIMENSIONS ARE INCHES. METRIC DIMENSIONS ARE IN BRACKETS. DECIMAL TOLERANCES .XXX ± 0.005 [0.13 mm] .XX ± 0.01 [0.25 mm] .X ± 0.1 [0.50 mm] ANGLE TOLERANCE .X ± 1 DEG. | REVISED UNGUYEN | TITLE TUBING, SHRINK OVER-EXPANDED |
| | APPROVED JKUSTER | |
| THIRD ANGLE PROJECTION | SIZE B | CODE IDENT. NO. 06090 |
| | DWG. NO. RT-1145-OX-XX-0 | |