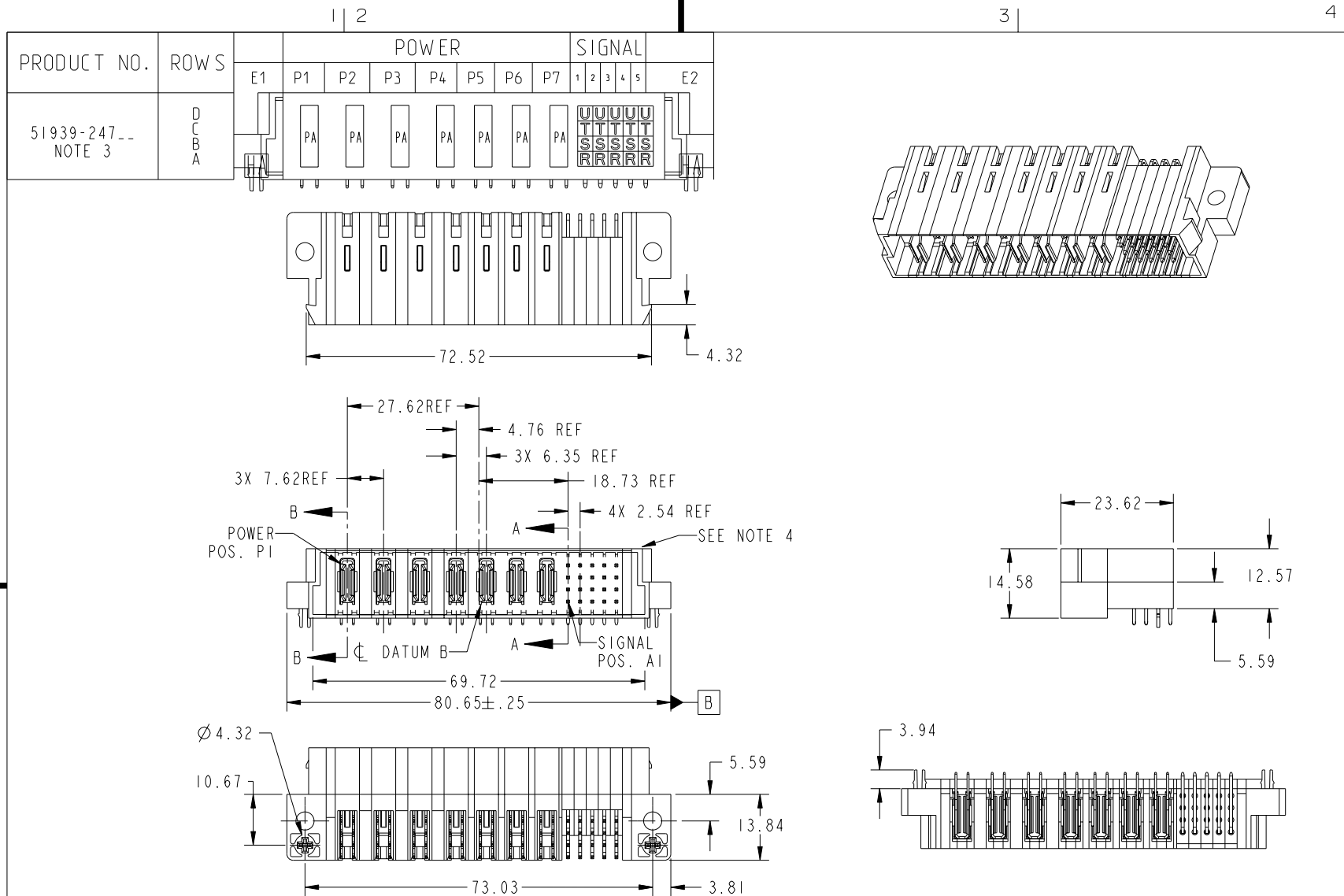


Tous droits strictement réservés. Reproduction ou communication o des tiers interdite sous quelque forme que ce soit sans autorisation écrite du propriétaire. Propriete de c FCI. Droits de reproduction FCI.



All rights strictly reserved. Reproduction or issue to third parties in any form whatever is not permitted without written authority from the proprietor. Property of FCI. Copyright FCI.



CODE	DIM "M" MATING LENGTH	CONTACT TYPE
U	[6.86]	SIGNAL
T	[6.86]	SIGNAL
S	[6.86]	SIGNAL
R	[6.86]	SIGNAL
PA	[N/A]	POWER
HA	[N/A]	HOLD-DOWN

mat'l code				SEE NOTE		tolerances unless otherwise specified		CUSTOMER		FCI www.fciconnect.com	
ltr	ecn no.	dr	date	linear	0.X ± 0.3	projection	COPY		title		
A	DG06-0566	SW	08/14/06	angles	0.XX ± 0.13		MM		4ACP + 3P + 20S RIGHT ANGLE SOLDER HEADER		
				dr	STEVEN WANG 08/14/06	scale		product family		code	
				engr	STEVEN WANG 08/14/06	1:1		PwrBlade		213	
				chr	BEER FU 08/14/06			size		sheet	
				appd	JOSEPH HSIA 08/14/06			A		1 of 4	
sheet index		revision sheet	A 1	A 2	A 3	A 4			cage code		4

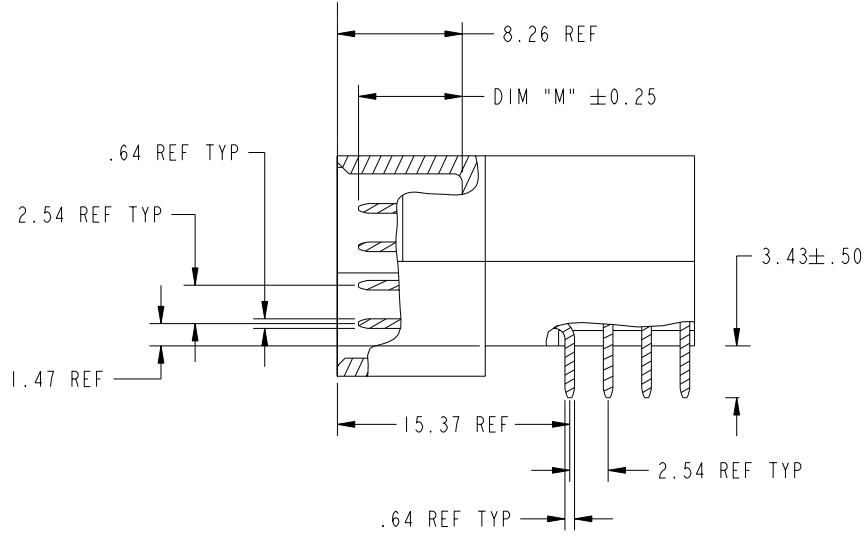
Pro/E

cage code 22526

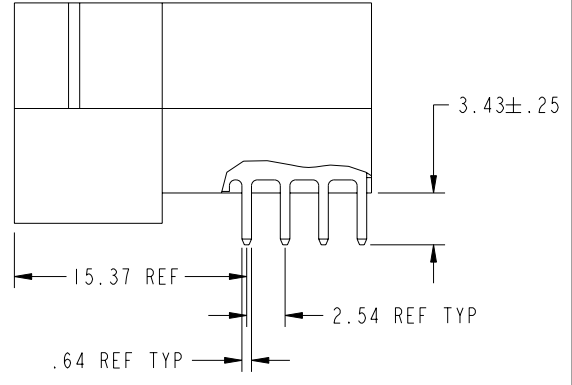
Tous droits strictement réservés. Reproduction ou communication o des tiers interdite sous quelque forme que ce soit sans autorisation écrite du propriétaire. Propriete de c FCI. Droits de reproduction FCI.

All rights strictly reserved. Reproduction or issue to third parties in any form whatever is not permitted without written authority from the proprietor. Property of FCI. Copyright FCI.

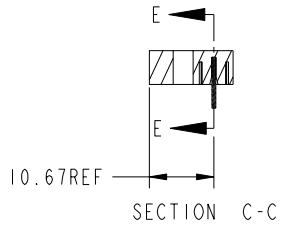
PRODUCT NUMBER
51939-247__
NOTE: 3



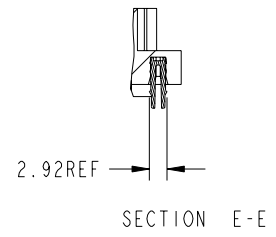
BROKEN-OUT SECTION A-A
SCALE 2:1




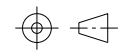

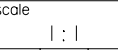
BROKEN-OUT SECTION B-B
SCALE 2:1



SECTION C-C



SECTION E-E

mat'l code				SEE NOTE		tolerances unless otherwise specified		CUSTOMER		 www.fciconnect.com	
ltr	ecr no.	dr	date	linear	0.X ±0.3	projection		COPY		title	
A					0.XX ±0.13					4ACP + 3P + 20S RIGHT ANGLE SOLDER HEADER	
				angles	0.XXX ±0.051					product family	PwrBlade
				dr	STEVEN WANG 08/14/06			size		code	213
				enr	STEVEN WANG 08/14/06	scale		A		sheet	2 of 4
				chr	BEER FU 08/14/06	1:1		51939-247			
				appd	JOSEPH HSIA 08/14/06						
sheet index	revision sheet									cage code	22526

Pro/E

cage code 22526

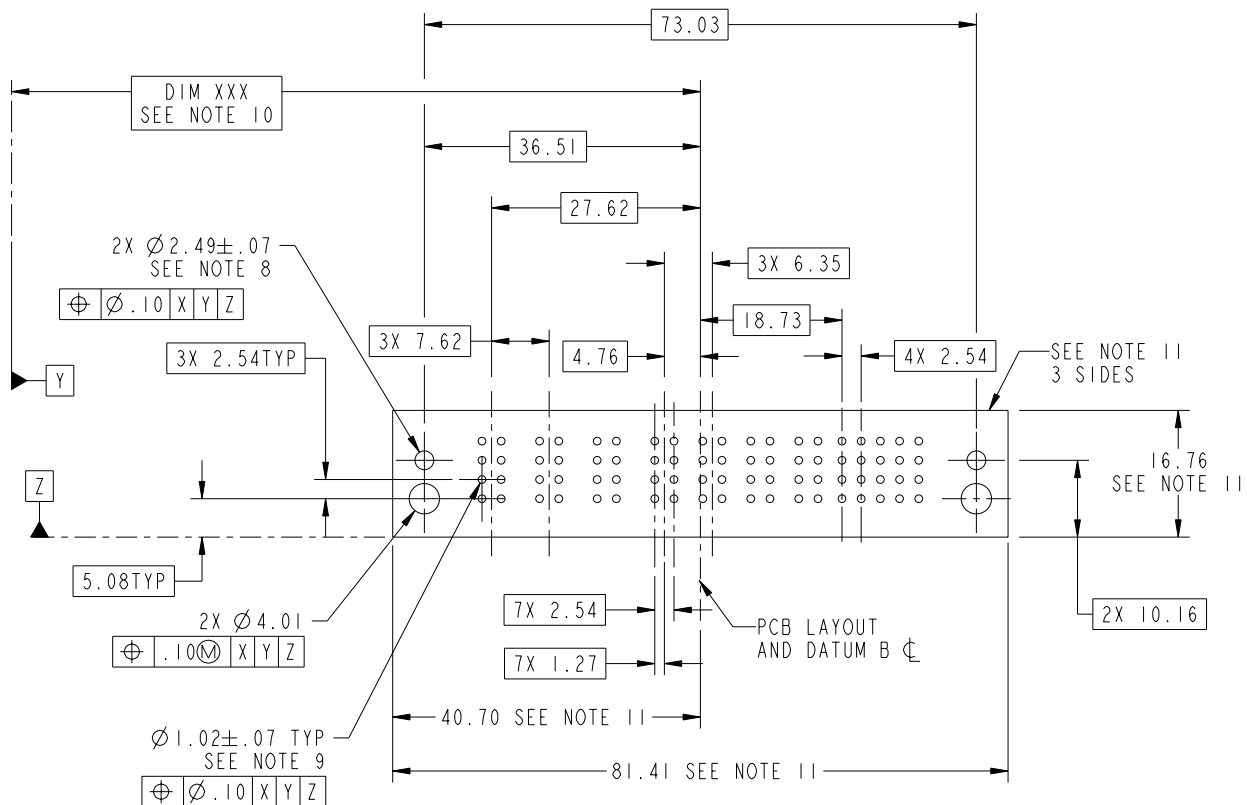
Tous droits strictement réservés. Reproduction ou communication o des tiers interdite sous quelque forme que ce soit sans autorisation écrite du propriétaire. Propriete de c FCI. Droits de reproduction FCI.



All rights strictly reserved. Reproduction or issue to third parties in any form whatever is not permitted without written authority from the proprietor. Property of FCI. Copyright FCI.

PRODUCT NUMBER

51939-247__
NOTE: 3



RECOMMENDED PCB LAYOUT

mat'l code				SEE NOTE		tolerances unless otherwise specified		CUSTOMER		FCI www.fciconnect.com	
ltr	ecn no.	dr	date	linear		0.X ± 0.3	COPY		title		
A						0.XX ± 0.13	projection		4ACP + 3P + 20S RIGHT ANGLE SOLDER HEADER		
				angles		0.XXX ± 0.051			product family		
					dr	0° ± 2°			PwrBlade		code
					enr	STEVEN WANG 08/14/06	MM		size		213
					chr	STEVEN WANG 08/14/06	1:1		dwg no		sheet
					appd	BEER FU 08/14/06			A 51939-247		3 of 4
						JOSEPH HSIA 08/14/06					
sheet index	revision sheet										

Pro/E

cage code 22526

PDM: Rev:A

STATUS: Released

Printed: Dec 20, 2010

Tous droits strictement reserves. Reproduction ou communication o des tiers interdite sous quelque forme que ce soit sans autorisation ecrite du proprietaire. Propriete de c FCI. Droits de reproduction FCI.



All rights strictly reserved. Reproduction or issue to third parties in any form whatever is not permitted without written authority from the proprietor. Property of FCI. Copyright FCI.

PRODUCT NUMBER

51939-247__
NOTE: 3

NOTES:

1. DIMENSIONS AND TOLERANCES ARE IN ACCORDANCE WITH ASME Y14.5M, 1994 UNLESS OTHERWISE SPECIFIED.

CONNECTOR NOTES:

- 2. HOUSING MATERIAL: UL 94 V-0 GLASS FILLED
HIGH-TEMP THERMOPLASTIC
POWER CONTACT MATERIAL: COPPER ALLOY
SIGNAL PIN MATERIAL: COPPER ALLOY
 - 3. 51939-247;51939-247LF;51939-247GLF PLATING SPEC. SEE PRINT:10064183
 - 4. MANUFACTURER'S NAME, P/N, AND DATE CODE TO APPEAR ON THIS SURFACE.
 - 5. PRODUCT SPECIFICATION GS-12-149.
APPLICATION SPECIFICATION BUS-20-067.
 - 6. PACKAGED IN TRAYS.
- PCB NOTES:
- 7. ALL HOLE DIAMETERS ARE FINISHED HOLE SIZE.
 - 8. MOUNTING HOLES, WHERE APPLICABLE, ARE UNPLATED.
 - 9. $\varnothing 1.151 \pm 0.025$ DRILLED HOLES PLATED WITH
0.008 MIN SnPb OVER 0.03
TO 0.08 Cu PLATING TO ACHIEVE
 $\varnothing 1.02 \pm .07$ HOLE.
 - 10. "DIM XXX" TO BE DETERMINED BY THE CUSTOMER.
 - 11. CONNECTOR KEEP-OUT ZONE.

mat'l code		SEE NOTE		tolerances unless otherwise specified		CUSTOMER		FCI www.fciconnect.com	
ltr	ecr no.	dr	date	linear	0.X ± 0.3	COPY		title	
A					0.XX ± 0.13	projection		4ACP + 3P + 20S RIGHT ANGLE SOLDER HEADER	
				angles	0.XXX ± 0.051			product family	
				dr	0° ± 2°	MM		PwrBlade	
				enr	STEVEN WANG 08/14/06	scale		code	
				chr	STEVEN WANG 08/14/06	1:1		213	
				appd	BEER FU 08/14/06	A		size	
					JOSEPH HSIA 08/14/06			dwg no	
sheet index	revision sheet							51939-247	
								4 of 4	

Pro/E

cage code 22526

PDM: Rev:A

STATUS: Released

Printed: Dec 20, 2010