

CONTACT ORIENTATION ON ROLL

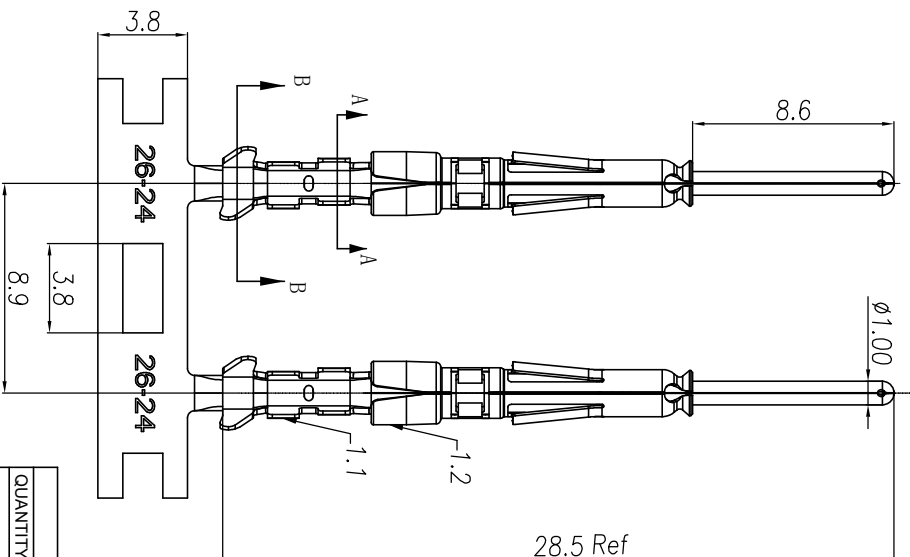
NOTES: (UNLESS OTHERWISE SPECIFIED)

1. MATERIAL:
  - 1.1. CONTACT BODY: COPPER ALLOY.
  - 1.2. OUTER SPRING: STAINLESS STEEL.
2. SPECIFICATIONS:
  - 2.1 CURRENT RATING: 5A MAX.
  - 2.2 TERMINATION TYPE: CRIMPING.
  - 2.3 WIRE RANGE: 26~24AWG.
  - 2.4 WIRE INSULATION DIA(MAX):  $\varnothing 2.2\text{mm}$ .
3. ROHS COMPLIANT.
4. ALL DIMENSIONS ARE FOR REFERENCE USE ONLY.
5. AVAILABLE TOOLS:
  - 5.1 HAND CRIMPER: MFX-3958. A3
  - 5.2 CRIMP APPLICATOR: MFX-3957.
  - 5.3 EXTRACTION TOOL: QXRT20.

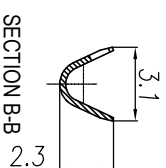
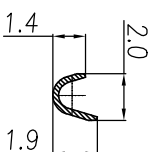
P/N	CONTACT PLATING(MATING AREA)
SP24W2T	TIN PLATING OVER NICKEL.
SP24W2N	NICKEL PLATING OVER COPPERIZE.
SP24W2F	GOLD FLASH PLATING OVER NICKEL.
SP24W2G5	5 $\mu$ " GOLD PLATING OVER NICKEL.
SP24W2G10	10 $\mu$ " GOLD PLATING OVER NICKEL.
SP24W2G15	15 $\mu$ " GOLD PLATING OVER NICKEL.
SP24W2G30	30 $\mu$ " GOLD PLATING OVER NICKEL.

A2

REVISIONS					
REV	ECO	DESCRIPTION	DATE	BY	APPR
A1	-	RELEASED DRAWING	Nov-9-17	Rookie	Tommy
A2	-	ADD THE G5 PART NUMBER	Jan-28-19	Blink	Tommy
A3	-	CHANGE HAND CRIMPER	Nov-8-19	Flan	Tommy



SECTION A-A



SECTION B-B

QUANTITY	PART NUMBER	DESCRIPTION	ITEM
		<b>MATERIALS LIST</b>	

UNLESS OTHERWISE SPECIFIED			
1) All dimensions are in millimeters.	DRAWN: <b>Rui</b>	DATE: <b>Nov-8-19</b>	<b>Amphenol</b> Sine Systems - www.amphenol-sine.com 44724 Montey Drive Clinton Township, MI 48038 ECO-MATE PIN CONTACT. STAMPED: 24-28AWG, SIZE 20
2) Tolerances are as follows:	CHECKED: <b>Mih</b>	DATE: <b>Nov-8-19</b>	
1 Pt. DEC 20 2018	APPROVED: <b>Tommy</b>	DATE: <b>Nov-8-19</b>	
3 Pt. DEC 20 2018	CUSTOMER: <b>Tommy</b>		
3) Note reference =			

PROCESS SPECIFICATIONS		MATERIAL SPECIFICATIONS	
SCALE: NONE	SIZE: B	SCALE: NONE	SIZE: B
SCALE: NONE	TYPE: C-	SCALE: NONE	TYPE: C-
SCALE: NONE	DWG NO: SP24W2XX	SCALE: NONE	DWG NO: SP24W2XX
SCALE: NONE	SHEET: 1 OF 1	SCALE: NONE	SHEET: 1 OF 1