

"High Frequency Ceramic Solutions"

400 MHz EMI Filter Array

P/N 0200FA18A0400

Detail Specification: 02/05/04

Page 1 of 2

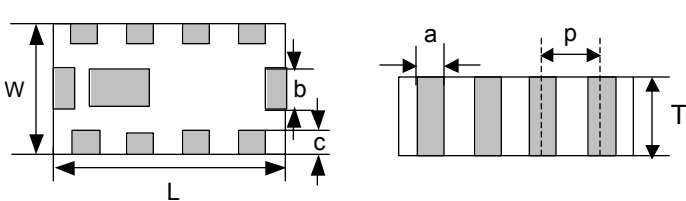
General Specifications

Part Number	0200FA18A0400
Cut Off Frequency (Mhz)	400
20 dB min. Attenuation (Mhz)	850 - 1200
10 dB min. Attenuation (Mhz)	1500 - 2500

Power Capacity	0.5 Watts max.
Impedance	50 Ω
Operating Temperature	-40 to +85°C
Storage Temperature	-40 to +85°C
Reel Quantity	3,000

Mechanical Dimensions

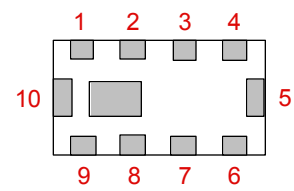
	In	mm
L	0.126 ± 0.008	3.20 ± 0.20
W	0.063 ± 0.008	1.60 ± 0.20
T	0.035 ± 0.008	0.90 ± 0.20
a	0.014 ± 0.008	0.35 ± 0.20
b	0.024 ± 0.006	0.60 ± 0.15
c	0.012 +.004/-.008	0.30 +0.1/-0.2
p	0.031 ± 0.004	0.80 ± 0.10



Unit: mm

Terminal Configuration

No.	Function	No.	Function	No.	Function
1	IN1	5	GND	9	OUT1
2	IN2	6	OUT4	10	GND
3	IN3	7	OUT3		
4	IN4	8	OUT2		

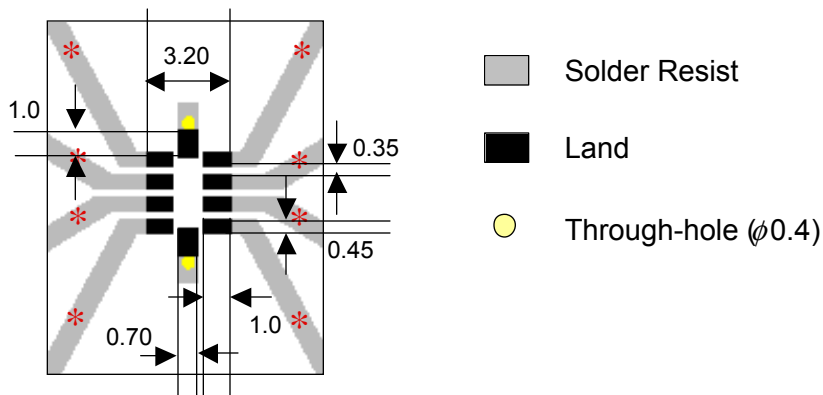


Mounting Considerations

Mount these devices with brown mark facing up.

Line width should be designed to provide 50Ω impedance matching characteristics.

Units: mm



Johanson Technology, Inc. reserves the right to make design changes without notice.

All sales are subject to Johanson Technology, Inc. terms and conditions.

"High Frequency Ceramic Solutions"

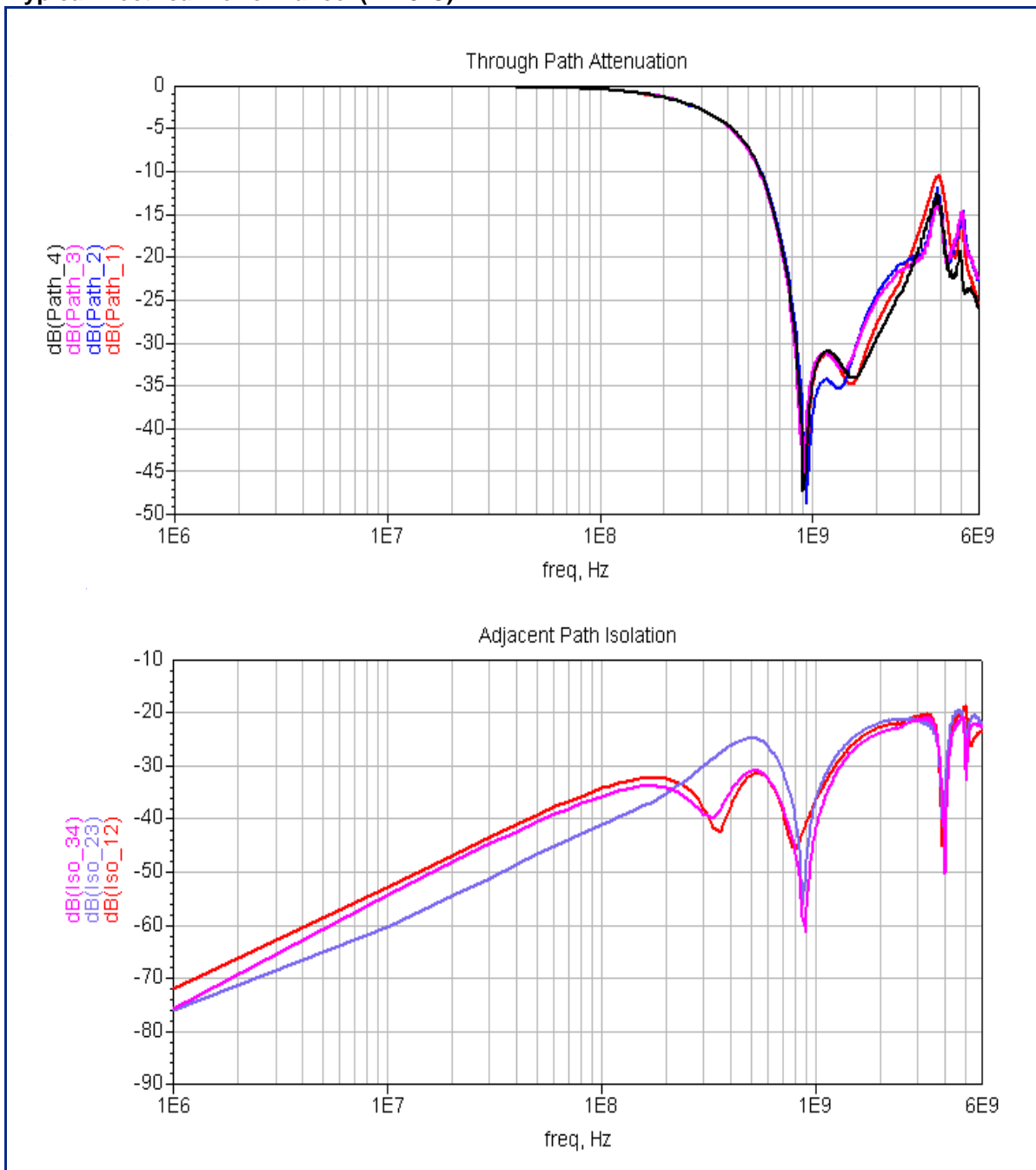
400 MHz EMI Filter Array

P/N 0200FA18A0400

Detail Specification: 02/05/04

Page 2 of 2

Typical Electrical Performance (T=25°C)



Johanson Technology, Inc. reserves the right to make design changes without notice.

All sales are subject to Johanson Technology, Inc. terms and conditions.



www.johansontechnology.com

931 Via Alondra • Camarillo, CA 93012 • TEL 805.389.1166 FAX 805.389.1821

2003 Johanson Technology, Inc. All Rights Reserved