

TAM 11/20/92
 APPROVED BY/DATE
 REV

SAFETY ORGANIZATION(S):

THIS FILTER HAS BEEN FORMALLY RECOGNIZED, CERTIFIED OR APPROVED BY THE LISTED AGENCY. THEREFORE, ALL TEST/REQUIREMENTS SPECIFIED IN THE LATEST REVISION OF THE FOLLOWING AGENCY STANDARDS HAVE BEEN MET.

- UL RECOGNIZED
- CSA CERTIFIED
- VDE APPROVED

- IN PROCESS
- IN PROCESS
- IN PROCESS

OPERATING SPECIFICATIONS:

- LINE VOLTAGE/CURRENT, 1 AMP., 120/250 VAC
- 50-60Hz
- MAX. LEAKAGE CURRENT, EACH LINE TO GROUND .25mA. at 120V 60 Hz
- .42mA at 250V 50 Hz
- OPERATING AMBIENT TEMP. RANGE: -10°C TO +40°C @ RATED CURRENT, I_r

IN AN AMBIENT, T_a, HIGHER THAN 40°C, THE MAXIMUM OPERATING CURRENT, I_o, IS AS FOLLOWS:

$$I_o = I_r \sqrt{\frac{95 - T_a}{45}}$$

RELIABILITY SPECIFICATIONS:

- STORAGE TEMPERATURE, -25°C TO +85°C
- HUMIDITY, 21 DAYS @ 40°C 95% RH
- CURRENT OVERLOAD TEST, 6 TIMES RATED CURRENT FOR 8 SECONDS

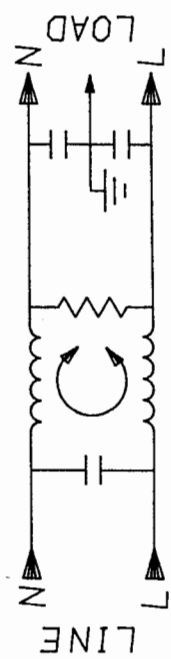
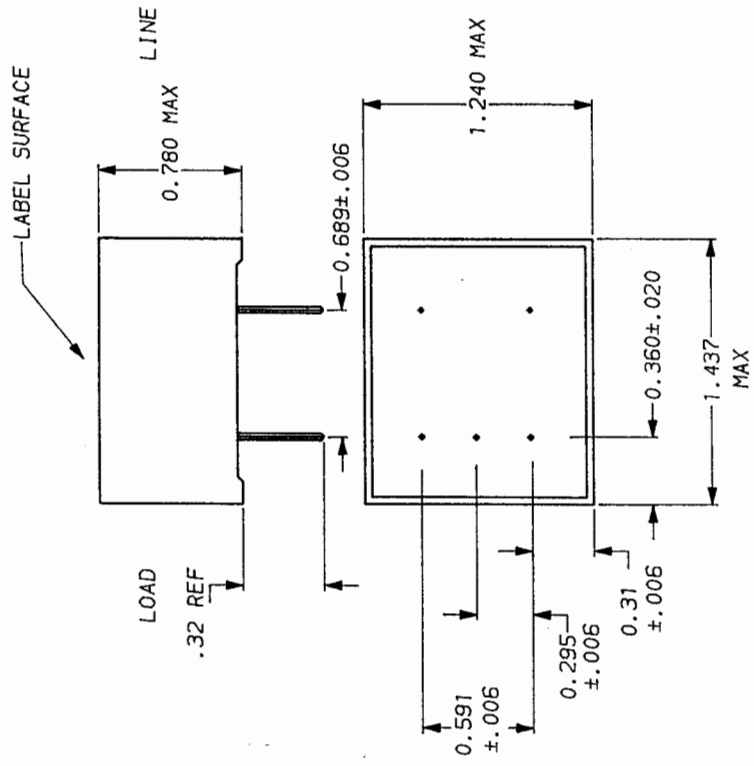
TEST SPECIFICATIONS:

- INDUCTANCE, 10.0 mH NOMINAL
- CAPACITANCE, (MEASURED @ 1 KHz, 0.25 VAC MAX., 25°C ±1°C)
 - LINE TO GROUND, .003µF ±20%
 - LINE TO LINE, .02µF ±20%
- DISCHARGE RESISTOR, 1.5MΩ
- LINE/GROUND AND LINE/LINE INSULATION RESISTANCE 6000 MΩ (MIN) AT 100 VDC
- (W/O DISCHARGE RESISTOR) 20°C AND 50% RH

RECOMMENDED RECEIVING INSPECTION HIPOT:

- LINE TO GROUND, 1500 Vdc FOR 1 MINUTE
- LINE TO LINE, 1450 Vdc FOR 1 MINUTE

FILTER APPROVAL:
 THE BEST WAY TO SELECT AND QUALIFY A FILTER IS FOR YOUR ENGINEERING TO TEST THE UNIT IN YOUR EQUIPMENT.



FREQUENCY MHz	50Ω - 50Ω (MINIMUM) INSERTION LOSS											
	.01	.15	.50	1	3	4	5	8	10	20	30	
COMMON	20	34	44	47	49	43	43	50	50	40	20	10
DIFF.	1	6	14	19	52	48	48	50	50	38	35	

This document is proprietary to CORCOM INC. and is not to be reproduced nor used for manufacturing purposes except on CORCOM's order or prior written consent.

TOLERANCE EXCEPT AS NOTED
 DECIMAL, .XXX .XX .X ANGLES
 ENGLISH, ±.025 ±1°
 METRIC, ±

MATERIAL: AS SUPPLIED

FINISH:



POWER LINE FILTER

DATE 10/21/92
 DRAWN BY TAM
 ORIGINATOR TAM
 DRG. NO. 1EOP.00
 REV. 00