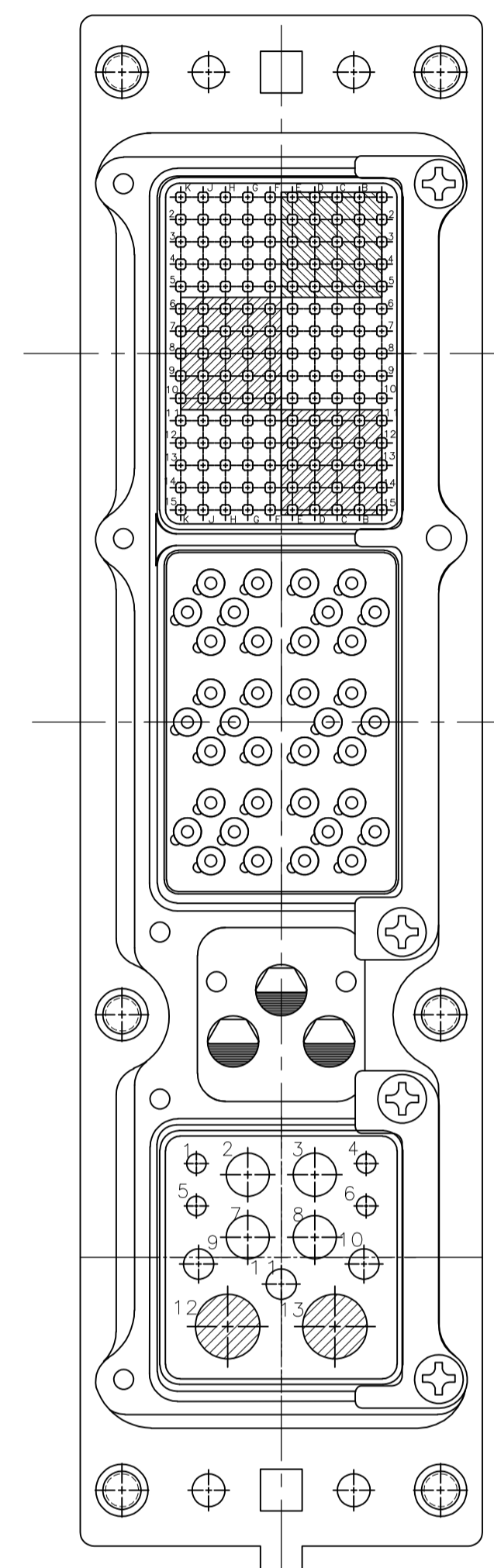


LOC		DIST		REVISIONS			
P	LTR	DESCRIPTION	DATE	DN	APVD		
P		REV PER ECO 15-004283	3-26-15	CT	WB		



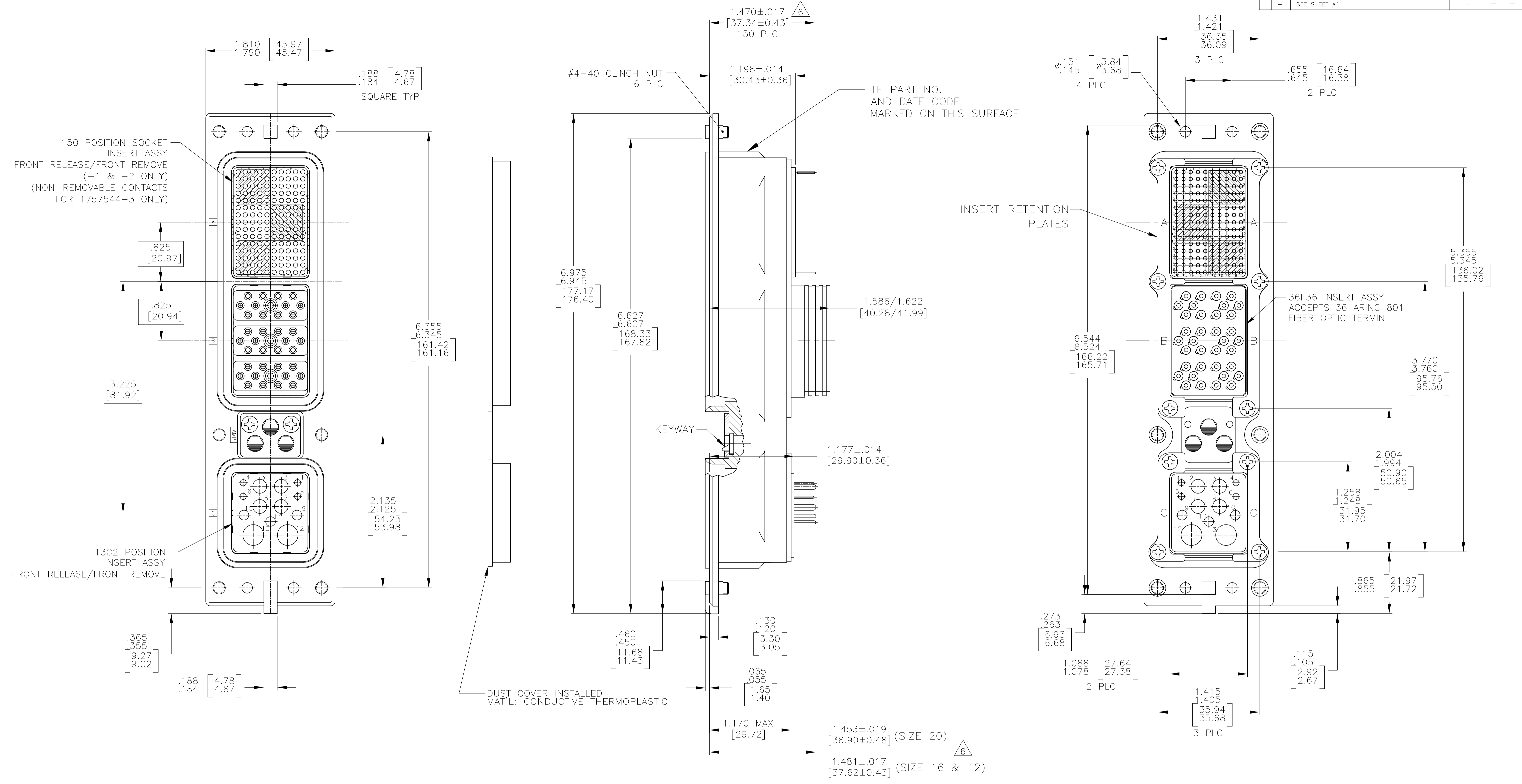
1757544-6 S/A 1757544-3  
 1757544-7 S/A 1757544-4  
 EXCEPT ONLY 2 INSERT RETENTION PLATES  
 AND 4 #1 PHILLIPS HEAD  
 RETENTION PLATE SCREWS

- CONNECTOR DIMENSIONS ARE PER ARINC 600 SPECIFICATION.
- CONNECTOR IS SUPPLIED WITH CONTACTS (PER TABLE) ASSEMBLED AS SHOWN.
- KEYING SHOWN IN POSITION "01" FOR ILLUSTRATION ONLY. CONNECTORS SHIPPED WITH KEYING INSTALLED IN POSITION PER TABLE. FOR POSITION "00" KEYING HARDWARE SHIPPED UNASSEMBLED.
- FRONT & REAR VIEWS ARE SHOWN WITHOUT CONTACTS.
- MODULE B (36F36) IS SUPPLIED WITHOUT CONTACTS. MUST BE ORDERED SEPARATELY.
- <sup>6</sup> DIMENSION APPLIES WITH CONTACTS FULLY SEATED TO REAR OF INSERT.
- ALL ASSEMBLIES ARE RoHS COMPLIANT.
- <sup>8</sup> PART NOS 1757544-1 AND -2 ARE OBSOLETE AND SUPERSEDED BY 1757544-3.

COMPONENT	MATERIAL	FINISH
SHELL	DIE CAST ALUMINUM PER ASTM-B-85	ELECTROLESS NICKEL PER MIL-C-26074
INSERT RETENTION PLATES	ALUMINUM ALLOY PER ASTM-B-209	ELECTROLESS NICKEL PER MIL-C-26074
FLAT HEAD SCREWS AND LOCKWASHERS	STAINLESS STEEL	PASSIVATED
POLARIZING KEYS	ZINC ALLOY PER ASTM-B-86	-
150 & 13C2 INSERTS	THERMOSET OR THERMOPLASTIC PPS PER MIL-M-24519	-
POLARIZING KEY RETAINING PLATE	ALUMINUM ALLOY PER ASTM-B-209	BLUE ANODIZED PER MIL-A-8625
36F36 INSERT	SEE TABLE	SEE TABLE
CLINCH NUT	STEEL	TRIVALENT CHROMATE OVER ZINC PLATE WITH MOLY LUBE

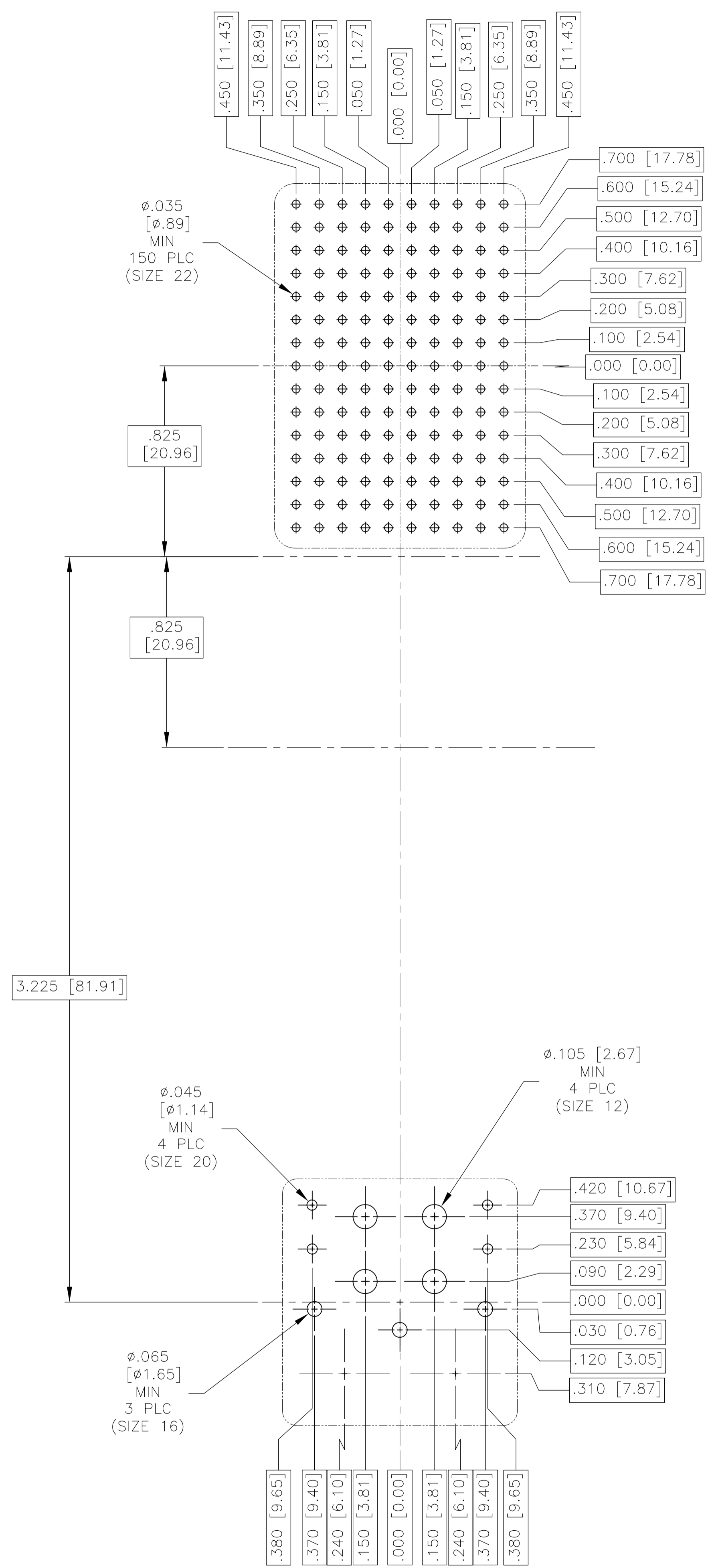
--	THERMOPLASTIC EPOXY	"00"	MODULE A SZ 22 NON-REMOVABLE SOCKET CONTACT MODULE C 1-448138-2 (#20 POSTED) 1-448139-1 (#16 POSTED) 448140-3 (#12 POSTED) 1484205-1 (SIZE 5 FILLER PLUG)	1757544-7	
--	THERMOPLASTIC EPOXY	"01"	MODULE A SZ 22 NON-REMOVABLE SOCKET CONTACT MODULE C 1-448138-2 (#20 POSTED) 1-448139-1 (#16 POSTED) 448140-3 (#12 POSTED) 1484205-1 (SIZE 5 FILLER PLUG)	1757544-6	
--	THERMOPLASTIC EPOXY	"00"	MODULE A SZ 22 NON-REMOVABLE SOCKET CONTACT MODULE C 1-448138-2 (#20 POSTED) 1-448139-1 (#16 POSTED) 448140-3 (#12 POSTED) 1484205-1 (SIZE 5 FILLER PLUG)	1757544-4	
--	THERMOPLASTIC EPOXY	"01"	MODULE A SZ 22 NON-REMOVABLE SOCKET CONTACT MODULE C 1-448138-2 (#20 POSTED) 1-448139-1 (#16 POSTED) 448140-3 (#12 POSTED) 1484205-1 (SIZE 5 FILLER PLUG)	1757544-3	
--	THERMOSET EPOXY	"01"	MODULE A 211431-4 (SIZE 22) MODULE C 1-448138-2 (#20 POSTED) 1-448139-1 (#16 POSTED) 448140-3 (#12 POSTED) 1484205-1 (SIZE 5 FILLER PLUG)	1757544-2 <sup>8</sup>	
	ANODIC OXIDATION PER MIL-A-8625	ALUMINUM ALLOY	"01"	MODULE A 211431-4 (SIZE 22) MODULE C 1-448138-2 (#20 POSTED) 1-448139-1 (#16 POSTED) 448140-3 (#12 POSTED) 1484205-1 (SIZE 5 FILLER PLUG)	1757544-1 <sup>8</sup>
36F36 FINISH	36F36 MATERIAL	KEYING POSITION	CONTACTS & FILLER PLUGS INCLUDED AND INSTALLED	PART NUMBER	

THIS DRAWING IS A CONTROLLED DOCUMENT.		DIN C.C.THOMAS 12-1-04	TE Connectivity	
DIMENSIONS: INCHES		CHK S.GLATFELTER 12-1-04	NAME RCPT ASSY, SIZE 2, ARINC 600 (150/36F36/13C2)	
		APVD S.GLATFELTER 12-1-04	APPLICATION SPEC	
MATERIAL SEE TABLE		FINISH SEE TABLE	WEIGHT	RESTRICTED TO
		SIZE A1	CAGE CODE 00779	DRAWING NO. 1757544
		CUSTOMER DRAWING		SCALE 3:2 SHEET 1 OF 3 REV P



THIS DRAWING IS A CONTROLLED DOCUMENT.		DIN C.C.THOMAS 12-1-04		TE Connectivity	
DIMENSIONS: INCHES		CHK S.GLATFELTER 12-1-04			
TOLERANCES UNLESS OTHERWISE SPECIFIED:		APVD S.GLATFELTER 12-1-04		NAME RCPT ASSY, SIZE 2, ARINC 600 (150/36F36/13C2)	
0 PLC ± -	1 PLC ± -	PRODUCT SPEC		APPLICATION SPEC	
2 PLC ± -	3 PLC ± -	WEIGHT		RESTRICTED TO	
4 PLC ± -	ANGLES ± -	A1 00779		SCALE 3:2 SHEET 2 OF 3 REV P	
MATERIAL SEE TABLE	FINISH SEE TABLE	CUSTOMER DRAWING		SCALE 3:2 SHEET 2 OF 3 REV P	

LOC		DIST		REVISIONS			
P	LTR	DESCRIPTION	DATE	DNW	APVD		
-	-	SEE SHEET 1	-	-	-		



RECOMMENDED P.C. BOARD LAYOUT  
SCALE 3:1

THIS DRAWING IS A CONTROLLED DOCUMENT.		DNW C.C.THOMAS 12-1-04	TE Connectivity																			
DIMENSIONS: INCHES		CHK S.GLATFELTER 12-1-04																				
TOLERANCES UNLESS OTHERWISE SPECIFIED:		APVD S.GLATFELTER 12-1-04	NAME RCPT ASSY, SIZE 2, ARINC 600 (150/36F36/13C2)																			
<table border="1"> <tr><td>0 PLC</td><td>±</td><td>-</td></tr> <tr><td>1 PLC</td><td>±</td><td>-</td></tr> <tr><td>2 PLC</td><td>±</td><td>-</td></tr> <tr><td>3 PLC</td><td>±</td><td>-</td></tr> <tr><td>4 PLC</td><td>±</td><td>-</td></tr> <tr><td>ANGLES</td><td>±</td><td>±</td></tr> </table>		0 PLC	±	-	1 PLC	±	-	2 PLC	±	-	3 PLC	±	-	4 PLC	±	-	ANGLES	±	±	PRODUCT SPEC	RESTRICTED TO	
0 PLC	±	-																				
1 PLC	±	-																				
2 PLC	±	-																				
3 PLC	±	-																				
4 PLC	±	-																				
ANGLES	±	±																				
MATERIAL SEE TABLE		FINISH SEE TABLE	WEIGHT	SIZE A1																		
			00779	DRAWING NO 1757544																		
			CUSTOMER DRAWING	SCALE 3:2 SHEET 3 OF 3 REV P																		