

PART NAME: KNOB

SCALE: 1:1

DATE: 11/5/92

DR. BY HD

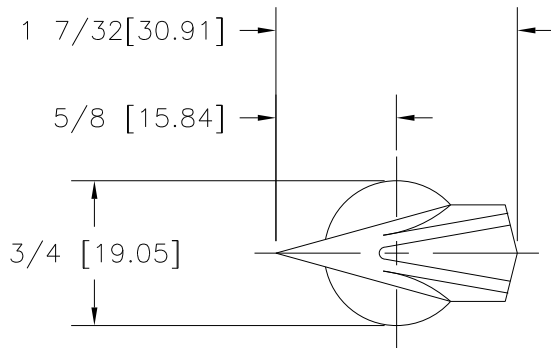
DAVIES MOLDING COMPANY
CAROL STREAM, ILLINOIS 60188

P/N 2300-BL

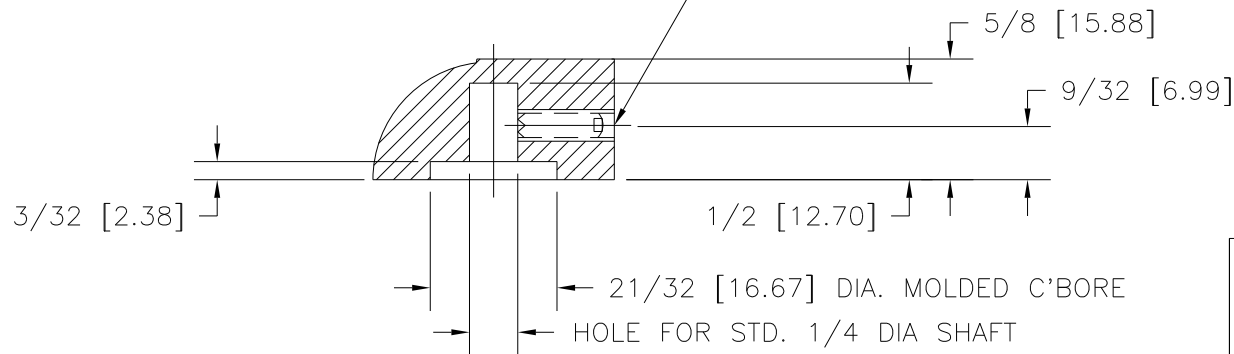
BASE PART 2300-03

SET SCREW I-22

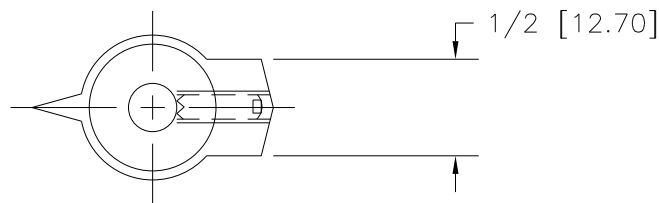
THIS DRAWING IS THE PROPERTY OF DAVIES MOLDING COMPANY, IS SUBMITTED SOLELY AS A DESIGN OR ENGINEERING PROJECT. WE ACCEPT NO RESPONSIBILITY WHATSOEVER FOR THE PRACTICAL APPLICATION OF THE PIECES MADE TO THIS DESIGN.



USE # 28 DR. (.140 DIA.); # 8-32 TAP.
8-32 THD. X 7/16 LG. CUP POINTED,
SLOTTED TYPE, HEADLESS, I-22; ONE REQ'D.



| PIN(S) # | USING MOLD |
|----------|--------------------------------------|
| # 2300 | M-2300-1 (AUTO) (20 CAVITY'S RUN) |
| # 2300-1 | M-2300-3 (SAC) (36 CAVITY'S RUN) |



MATERIAL : PHENOLIC
COLOR : MUP-01-WHITE

| | | | | |
|---|----------------------------------|---------|-----------------|--------------|
| TOLERANCES: UNLESS OTHERWISE SPECIFIED | DO NOT SCALE DRAWING | | | |
| DECIMALS: X.XXX ± .005 X.XX ± .015 | MM: X.XX ± 0.15MM X.X ± 0.4MM | - | UPDATED TOOLBOX | JAM 10/18/02 |
| FRACTIONS ± 1/64 | ANG. ± 1° | CHANGES | | |