



AWM92100V

SPECIFICATIONS:

| | MIN | TYP | MAX |
|----------------------------|-----|------|-------------|
| SUPPLY VOLTAGE | 8 | 10 | 15 VDC |
| POWER CONSUMPTION | | 50mW | |
| REPEATABILITY & HYSTERESIS | | | ± .35% SPAN |
| RESPONSE TIME | | | 1mSEC TYP |
| OVERPRESSURE | | | 25 PSI |
| OPERATING TEMPERATURE | -25 | 25 | 85°C |
| STORAGE TEMPERATURE | -40 | | 90°C |
| SHOCK RATING | | | 100 g PEAK |

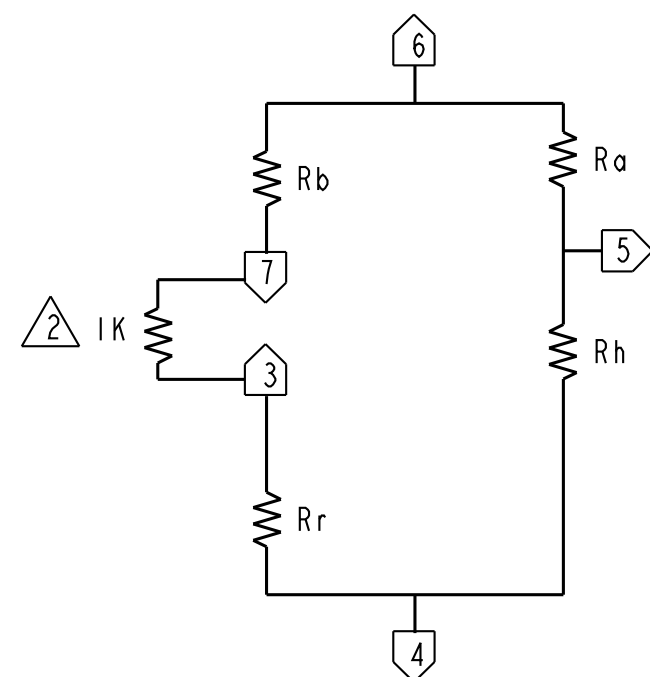
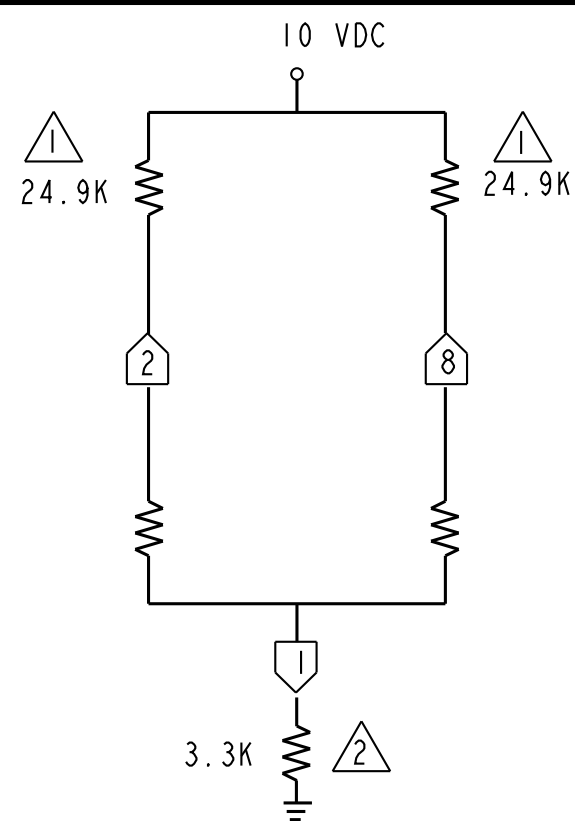
OUTPUT SPECIFICATIONS AT 10 VDC:

| | |
|----------------------------------|--------------|
| NULL VOLTAGE | 0 ± 15mV |
| NULL OUTPUT SHIFT -25°C TO +85°C | ± 2mV TYP |
| OUTPUT SHIFT -25°C TO +25°C | -3% FSO TYP |
| OUTPUT SHIFT 25°C TO 85°C | ± 1% FSO TYP |

SPAN VOLTAGE VERSUS FLOW

| FLOW SCCM | NOMINAL mV | TOLERANCE ±mV | MINIMUM mV | MAXIMUM mV |
|--------------|---------------|------------------|---------------|---------------|
| 0 | 0 | 20 | -20 | 20 |
| 50 | 36 | 17 | 19 | 53 |
| 100 | 56 | 25 | 31 | 81 |
| 150 | 68 | 29 | 39 | 97 |
| 200 | 77 | 32 | 45 | 109 |
| -50 | -37 | 18 TYP * | -19 TYP | -55 TYP |
| -100 | -57 | 26 TYP * | -31 TYP | -83 TYP |
| -150 | -69 | 30 TYP * | -39 TYP | -99 TYP |
| -200 | -78 | 33 TYP * | -45 TYP | -111 TYP |

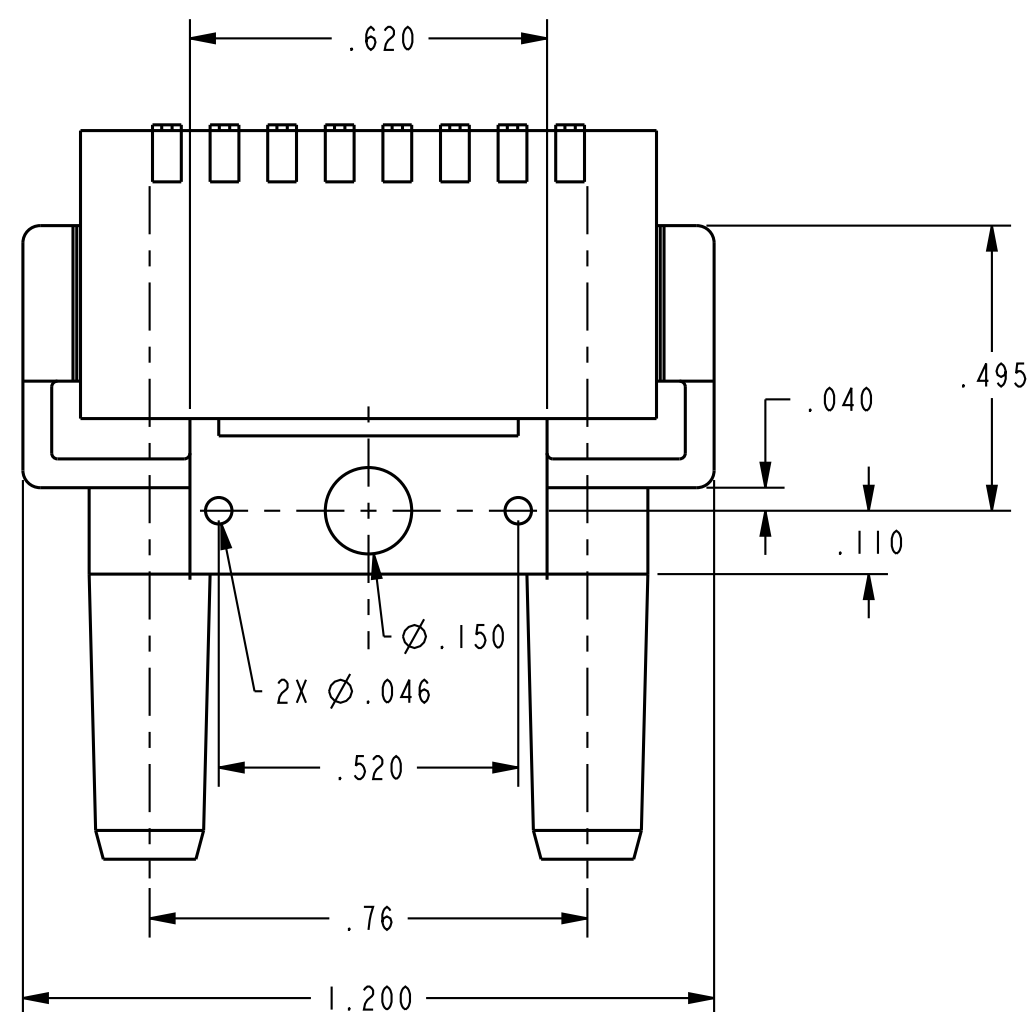
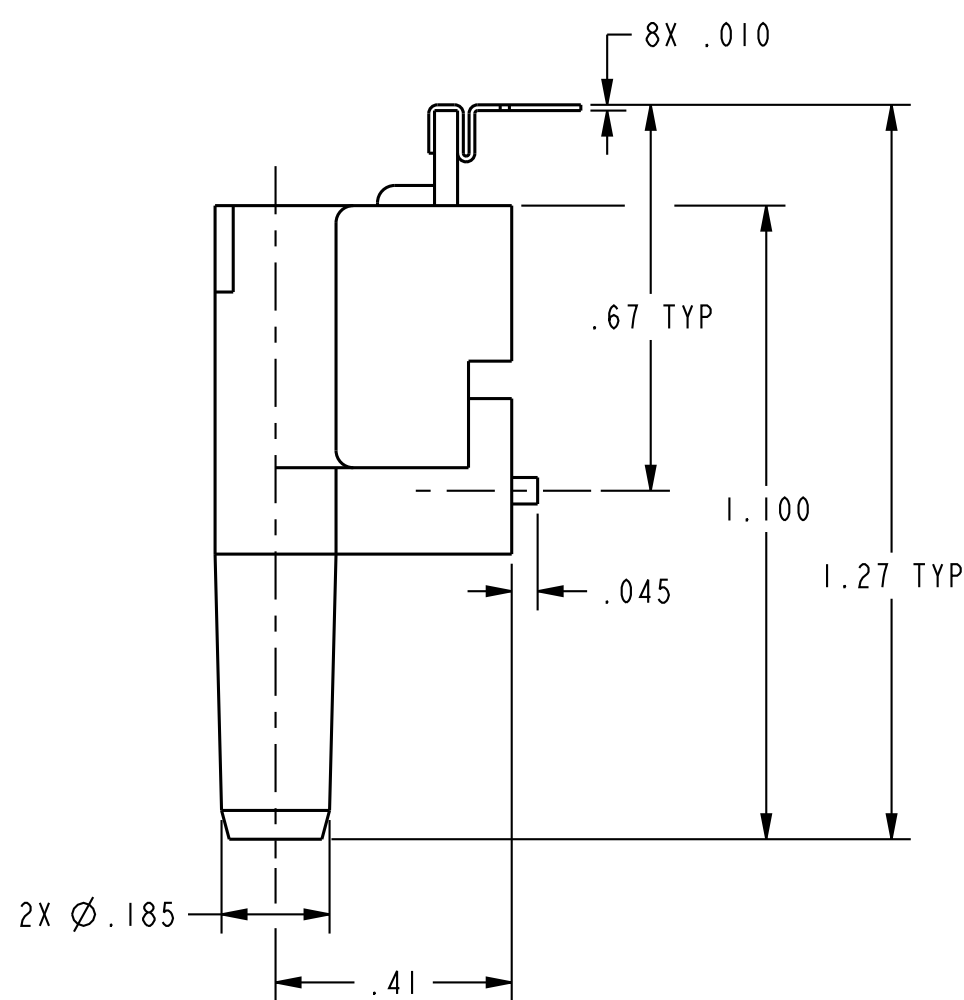
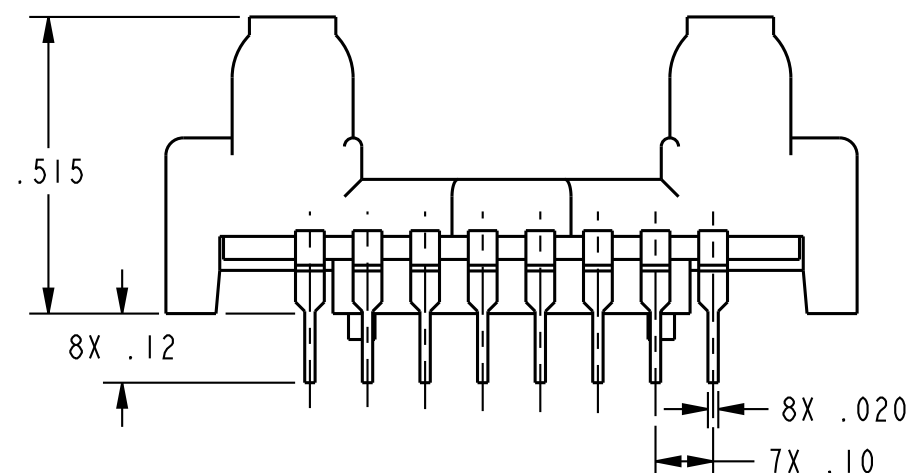
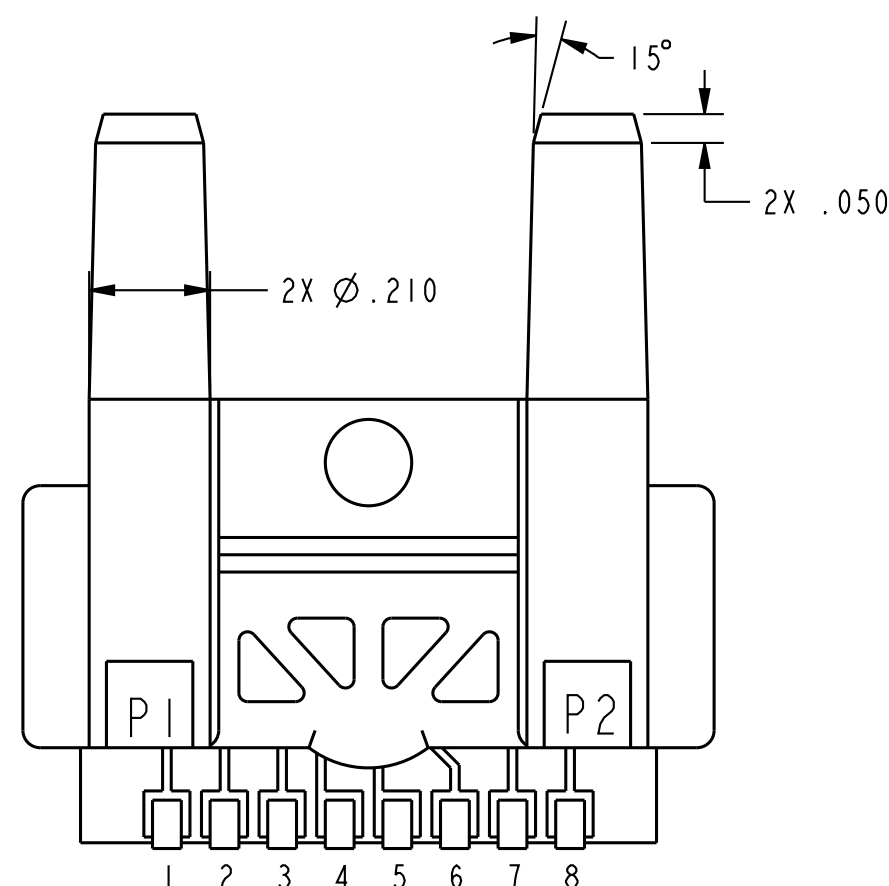
TYP * DESIGN VERIFIED ONLY NOT TESTED IN PRODUCTION



NOTES

△ CUSTOMER SUPPLIED 24.9D MATCHED RESISTORS

△ CUSTOMER SUPPLIED



AWM92100V

ISSUE 3

REVISIONS

| | | | |
|---|---------|-----|---------|
| A | 0000252 | JLH | 13MAY03 |
| B | 0096319 | VKS | 06DEC12 |

SCALE 3:1

DO NOT SCALE PRINT

UNLESS OTHERWISE SPECIFIED TOLERANCES ARE

| | | |
|--------------|--------|--------|
| ONE PLACE | (.0) | ± .030 |
| TWO PLACES | (.00) | ± .015 |
| THREE PLACES | (.000) | ± .005 |
| ANGLES | | ± |

WEIGHT

THIS DRAWING COVERS A PROPRIETARY ITEM AND IS THE PROPERTY OF MICRO SWITCH, A DIVISION OF HONEYWELL. THIS DRAWING IS NOT TO BE COPIED OR USED WITHOUT THE APPROVAL OF MICRO SWITCH.

MICRO SWITCH a Honeywell Division

AIRFLOW SENSOR

AWM92100V

ANSI Y14.5M-1982 APPLIES

FED. MFG. CODE 91929

THIRD ANGLE PROJECTION

SCALE 3:1

DO NOT SCALE PRINT

UNLESS OTHERWISE SPECIFIED TOLERANCES ARE

| | | |
|--------------|--------|--------|
| ONE PLACE | (.0) | ± .030 |
| TWO PLACES | (.00) | ± .015 |
| THREE PLACES | (.000) | ± .005 |
| ANGLES | | ± |

WEIGHT