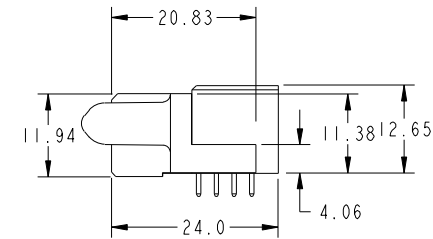
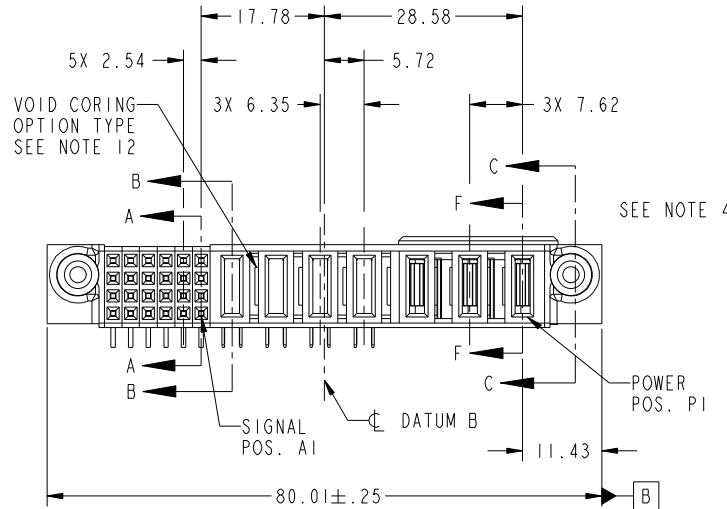
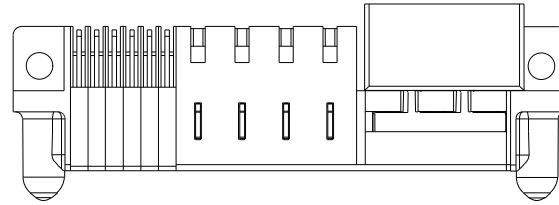
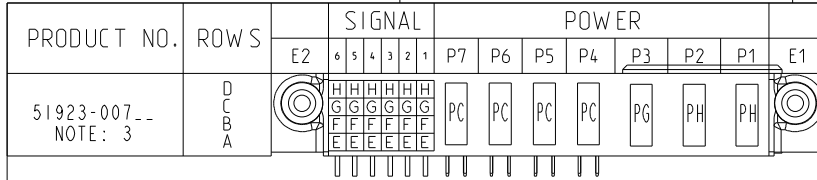


Tous droits strictement reserves. Reproduction ou communication a des tiers interdite sous quelque forme que ce soit sans autorisation écrite du propriétaire. Propriete de c FCI. Droits de reproduction FCI.



All rights strictly reserved. Reproduction or issue to third parties in any form whatever is not permitted without written authority from the proprietor. Property of FCI. Copyright FCI.



CODE	DIM "M" MATING LENGTH	CONTACT TYPE
PG	1.07	POWER
PH	2.34	POWER
PC	2.34	POWER
H	N/A	SIGNAL
G	N/A	SIGNAL
F	N/A	SIGNAL
E	N/A	SIGNAL

mat'l code				SEE NOTE 2		tolerances unless otherwise specified		CUSTOMER	
ltr	ecn no.	dr	date	linear	0.X ± 0.5	projection		COPY	
A	DG08-0205	SH	08/04/08	angles	0.XX ± 0.25	MIM		title	
					0.XXX ± 0.1	1:1		3ACP + 4P + 24S	
				dr	0° ± 2°	scale		R/A STB RCPT CABLE PORT	
				enr	Sincere He 07/31/08	A		product family PwrBlade code 213	
				chr	Sincere He 07/31/08			size dwg no 51923-007 sheet 1 of 4	
				appd	Gary Hsieh 07/31/08				
					Joseph Hsia 07/31/08				
sheet index	revision sheet	A	A	A	A			cage code 22526	
		1	2	3	4				

Pro/E

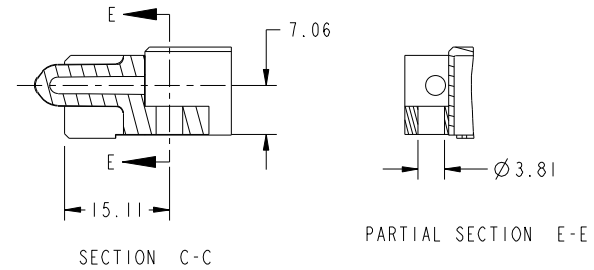
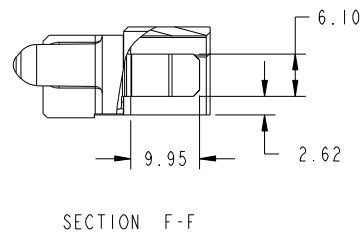
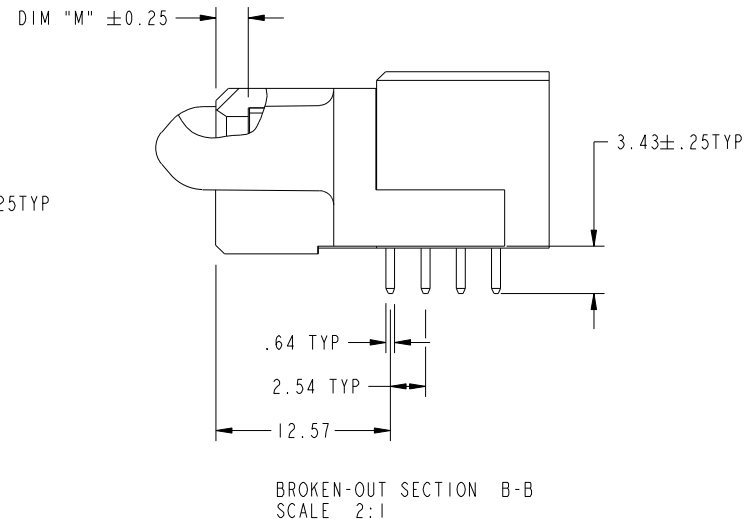
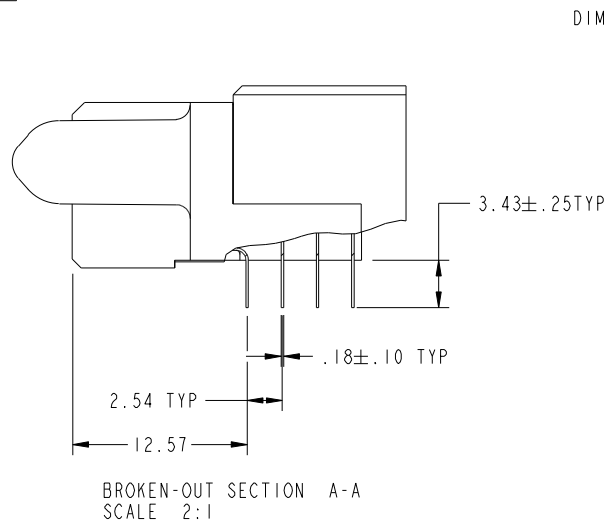
cage code 22526

Tous droits strictement reserves. Reproduction ou communication a des tiers interdite sous quelque forme que ce soit sans autorisation écrite du propriétaire. Propriete de c FCI. Droits de reproduction FCI.

All rights strictly reserved. Reproduction or issue to third parties in any form whatever is not permitted without written authority from the proprietor. Property of FCI. Copyright FCI.



PRODUCT NUMBER  
51923-007--  
NOTE:3



mat'l code		SEE NOTE 2		tolerances unless otherwise specified		CUSTOMER		 www.fciconnect.com	
ltr	ecn no.	dr	date	linear	0.X ± 0.5	COPY		title	
A					0.XX ± 0.25	projection		3ACP + 4P + 24S R/A STB RCPT CABLE PORT	
				angles	0.XXX ± 0.1			product family	
				dr	0° ± 2°	MIM		PwrBlade	
				enr	Sincere He 07/31/08	scale		code	
				chr	Sincere He 07/31/08	1:1		213	
				appd	Gary Hsieh 07/31/08	A		sheet	
					Joseph Hsia 07/31/08			2 of 4	
sheet index	revision sheet								

cage code 22526

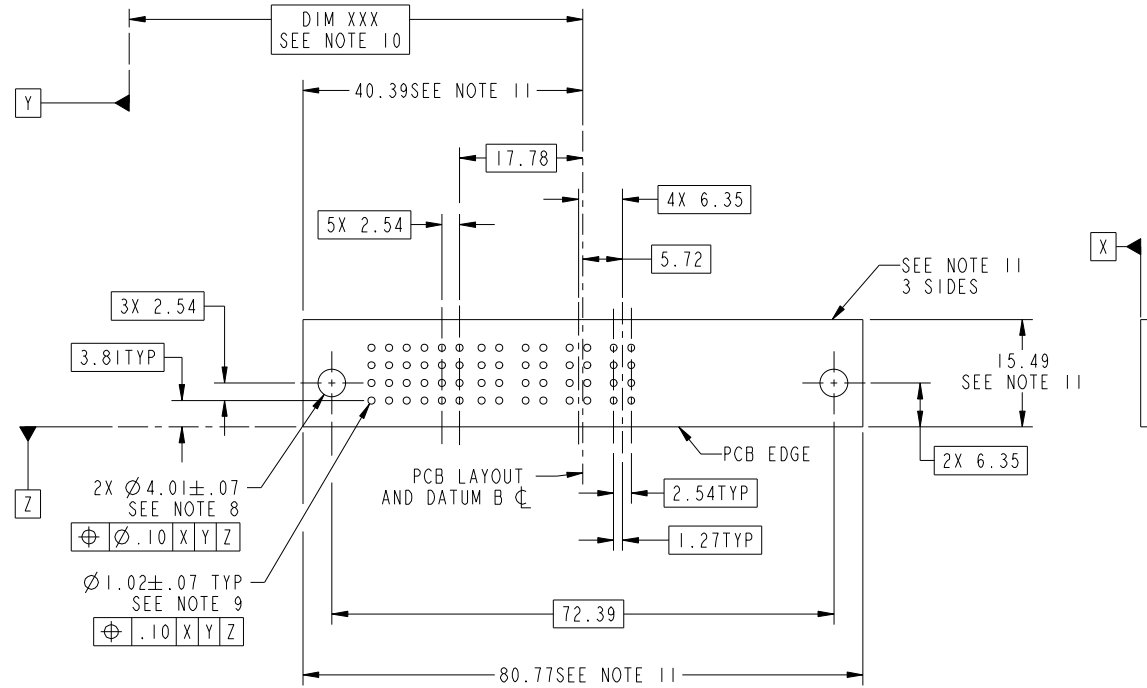
Pro/E

Tous droits strictement reserves. Reproduction ou communication a des tiers interdite sous quelque forme que ce soit sans autorisation écrite du propriétaire. Propriete de c FCI. Droits de reproduction FCI.



All rights strictly reserved. Reproduction or issue to third parties in any form whatever is not permitted without written authority from the proprietor. Property of FCI. Copyright FCI.

PRODUCT NUMBER  
51923-007--  
NOTE:3



RECOMMENDED PCB LAYOUT

mat'l code				SEE NOTE 2		tolerances unless otherwise specified		CUSTOMER		 www.fciconnect.com	
ltr	ecn no.	dr	date	linear	0.X ±0.5	COPY		projection		title	
A					0.XX ±0.25	MIM				3ACP + 4P + 24S R/A STB RCPT CABLE PORT	
				angles	0.XXX ±0.1	scale		product family		code	
				dr	0° ±2°	1:1		PwrBlade		213	
				enr	Sincere He 07/31/08			size		sheet	
				chr	Sincere He 07/31/08			dwg no		3 of 4	
				appd	Gary Hsieh 07/31/08			A		51923-007	
					Joseph Hsia 07/31/08					3 of 4	
sheet index	revision sheet										

cage code 22526

Pro/E

Tous droits strictement reserves. Reproduction ou communication a des tiers interdite sous quelque forme que ce soit sans autorisation écrite du propriétaire. Propriete de c FCI. Droits de reproduction FCI.

All rights strictly reserved. Reproduction or issue to third parties in any form whatever is not permitted without written authority from the proprietor. Property of FCI. Copyright FCI.

PRODUCT NUMBER  
51923-007--  
NOTE:3

NOTES:

1. DIMENSIONS AND TOLERANCES ARE IN ACCORDANCE WITH ASME Y14.5M, 1994 UNLESS OTHERWISE SPECIFIED.

CONNECTOR NOTES:

- 2. HOUSING MATERIAL: UL 94 V-0 GLASS FILLED  
HIGH-TEMP THERMOPLASTIC  
POWER CONTACT MATERIAL: COPPER ALLOY  
SIGNAL PIN MATERIAL: COPPER ALLOY
- 3. PLATING:  
51923-007,51923-007LF, PLATING SPEC. SEE PRINT:10064183
- 4. MANUFACTURER'S NAME, P/N, AND DATE CODE TO APPEAR ON THIS SURFACE.
- 5. PRODUCT SPECIFICATION GS-12-149.  
APPLICATION SPECIFICATION BUS-20-067.
- 6. PACKAGED IN TRAYS.

PCB NOTES:

- 7. ALL HOLE DIAMETERS ARE FINISHED HOLE SIZE.
- 8. MOUNTING HOLES, WHERE APPLICABLE, ARE UNPLATED.
- 9.  $\varnothing 1.151 \pm 0.025$  DRILLED HOLES PLATED WITH  
0.008 MIN SnPb OVER 0.03  
TO 0.08 Cu PLATING TO ACHIEVE  
 $\varnothing 1.02 \pm .07$  HOLE.
- 10. "DIM XXX" TO BE DETERMINED BY THE CUSTOMER.
- 11. CONNECTOR KEEP-OUT ZONE.
- 12: THE VOID CORING IN BETWEEN POWER MODULES, SIGNAL MODULES AND END MODULES ARE OPTIONAL AND THE SHAPE MAY BE DIFFERENT FOR OPTIMIZE THE MOLDING PROCESS, THE VOID CORING WILL NO EFFECT TO PRODUCT FUNCTION.

mat'l code				SEE NOTE 2		tolerances unless otherwise specified		CUSTOMER		FCI		www.fciconnect.com			
ltr	ecr no.	dr	date	linear	0.X ± 0.5		COPY		projection	title					
A					0.XX ± 0.25		MIM			3ACP + 4P + 24S R/A STB RCPT CABLE PORT					
					0.XXX ± 0.1		← MIM →			product family		PwrBlade		code	
				angles	0° ± 2°		scale		size		dwg no		sheet		
				dr	Sincere He	07/31/08	1:1		A		51923-007		4 of 4		
				enrg	Sincere He	07/31/08									
				chr	Gary Hsieh	07/31/08									
				appd	Joseph Hsia	07/31/08									
sheet index		revision sheet													

cage code 22526

Pro/E