

THIS DRAWING IS UNPUBLISHED.

RELEASED FOR PUBLICATION

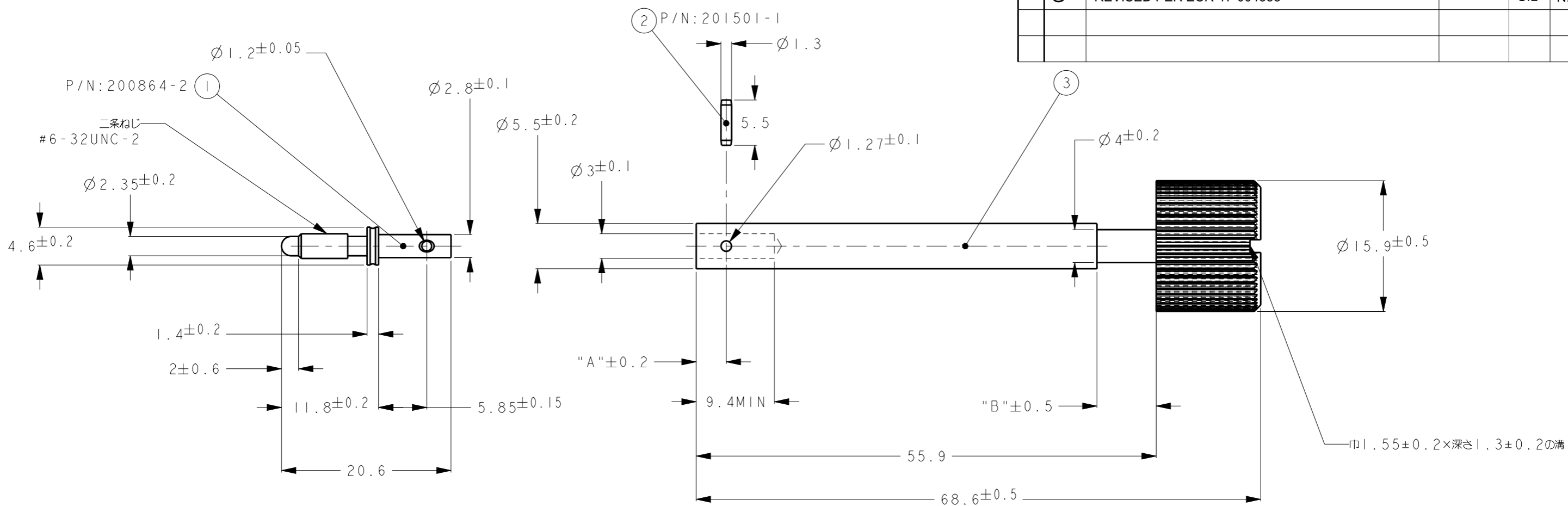
20

© COPYRIGHT 20 BY - ALL RIGHTS RESERVED.

LOC - DIST -

REVISIONS

P	LTR	DESCRIPTION	DATE	DWN	APVD
F		REVISED (REDRAW)	16APR2013	T.N	N.Y
G		REVISED PER ECR-17-004338	18APR17	C.L	N.Y



1. TO PREVENT THREAD STRIPPING, SCREW TORQUE SHOULD NOT EXCEED 12kg-cm Max  
 2. SIMILAR P/N 202643-3

OBSOLETE										
7-3	7-2	7-1	-3	2	-1					TABLE 1
PART NO.										
1	-	-	-	-	-	1.8	7.2	BRASS, Ni PLATED	JACK-SCREW BODY	③
-	1	-	-	-	-	2.6	26.0	BRASS, Ni PLATED	JACK-SCREW BODY	③
-	-	1	-	-	-	3.65	7.2	BRASS, Ni PLATED	JACK-SCREW BODY	③
-	-	-	1	-	-	1.8	7.2	BRASS, TIN PLATED	JACK-SCREW BODY	③
-	-	-	-	1	-	2.6	26.0	BRASS, TIN PLATED	JACK-SCREW BODY	③
-	-	-	-	-	1	3.65	7.2	BRASS, TIN PLATED	JACK-SCREW BODY	③
1	1	1	1	1	1	-	-	STAINLESS STEEL ORGANIC COATING	JACK-SCREW PIN	②
1	1	1	1	1	1	-	-	STAINLESS STEEL ORGANIC COATING	JACK-SCREW TIP	①
QTY						"A"	"B"	MATERIAL&FINISH	NAME	ITEM

THIS DRAWING IS A CONTROLLED DOCUMENT.		DWN T. NAGASAKI 16APR2013	TE Connectivity		
DIMENSIONS: mm		CHK S. YAMADA 16APR2013			
TOLERANCES UNLESS OTHERWISE SPECIFIED:		APVD N. YAMASAKI 16APR2013	NAME JACK-SCREW MALE EXTRA-LONG M SERIES		
0 PLC ± 1 PLC ± 2 PLC ± ±0.4 3 PLC ± 4 PLC ± ANGLES ±1°		PRODUCT SPEC -	RESTRICTED TO -		
MATERIAL -		APPLICATION SPEC -	SIZE A3	CAGE CODE 00779	DRAWING NO C-170994
FINISH -		WEIGHT -	SCALE 2:1 SHEET 1 OF 1 REV G		
Customer Drawing					