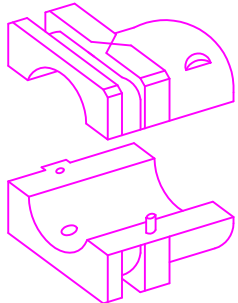
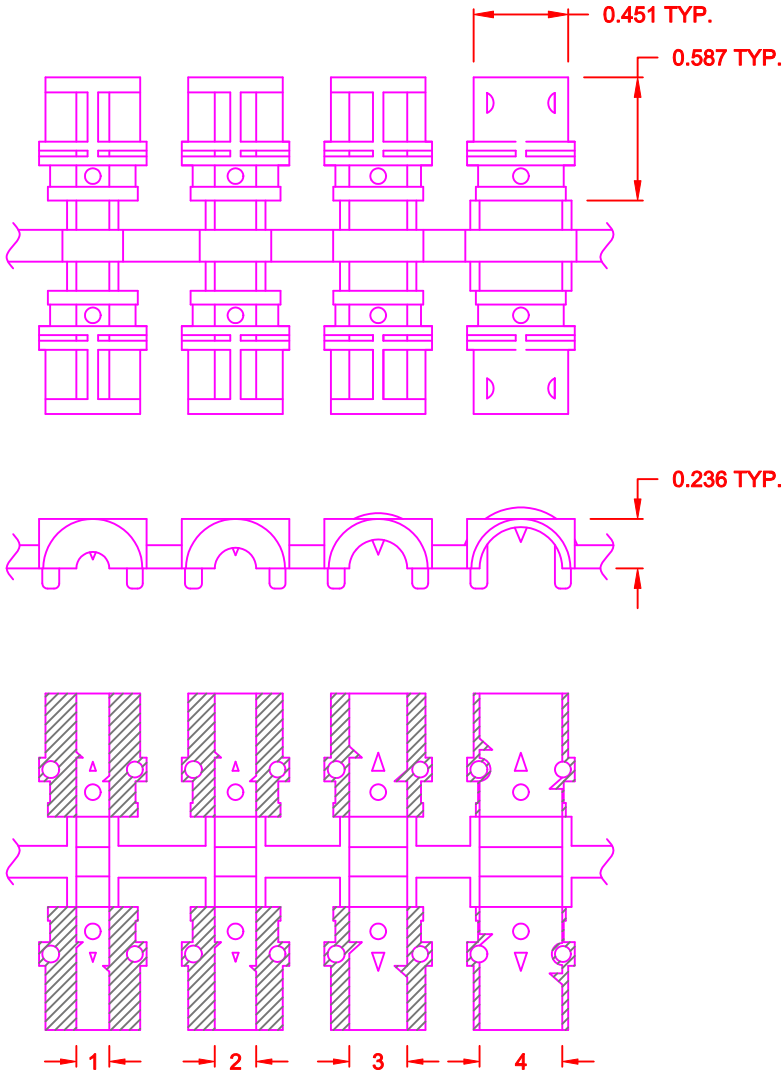


SPECIFICATION:

METALIZED PLASTIC: UL APPROVED ABS PLASTIC, UL94-HB, VH-0800
 METALIZED, SHIELDED
 PLATING - 10µ NICKEL OVER 5µ COPPER



INSERT DIMENSIONS		
NUMBER	in.	mm
1	0.157	[4.0]
2	0.197	[5.0]
3	0.276	[7.0]
4	0.394	[10.0]

NOTE:
 INSERTS MAY BE MIXED TO
 BEST FIT THE CABLE USED

970-RACIR020

BACKSHELL SERIES — 970
 971
 DESCRIPTION — RAPID
 ASSEMBLY
 COMPRESSION
 INSERT
 RoHS COMPLIANT —
 MATERIAL — METALIZED PLASTIC

METALIZED PLASTIC GROMMETS

DO NOT SCALE FROM DRAWING

RoHS COMPLIANT

	THESE DRAWINGS AND SPECIFICATIONS ARE THE PROPERTY OF NorComp AND SHALL NOT BE REPRODUCED, COPIED OR USED AS THE BASIS FOR THE MANUFACTURE OF SALE OF APPARATUS WITHOUT WRITTEN PERMISSION.		DRAWN: C. SMITH	DATE: 11-06-07
			CHECKED:	DATE:
NorComp	SCALE: FULL	SHEET 1 OF 1	REV 2	
	DWG NO. 970-RACIR020			