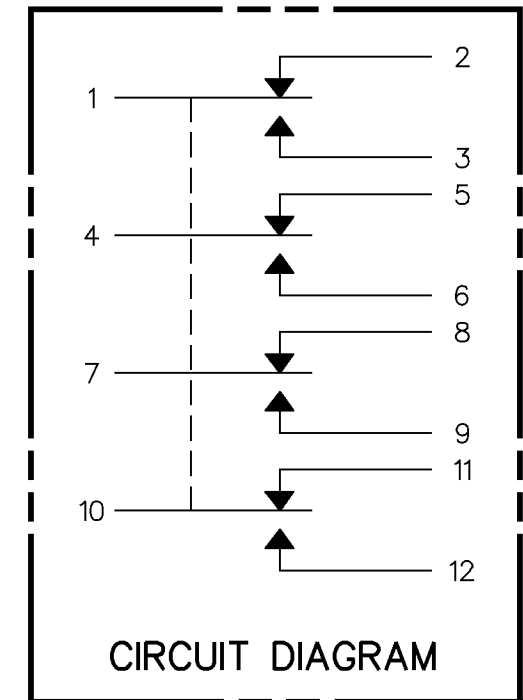
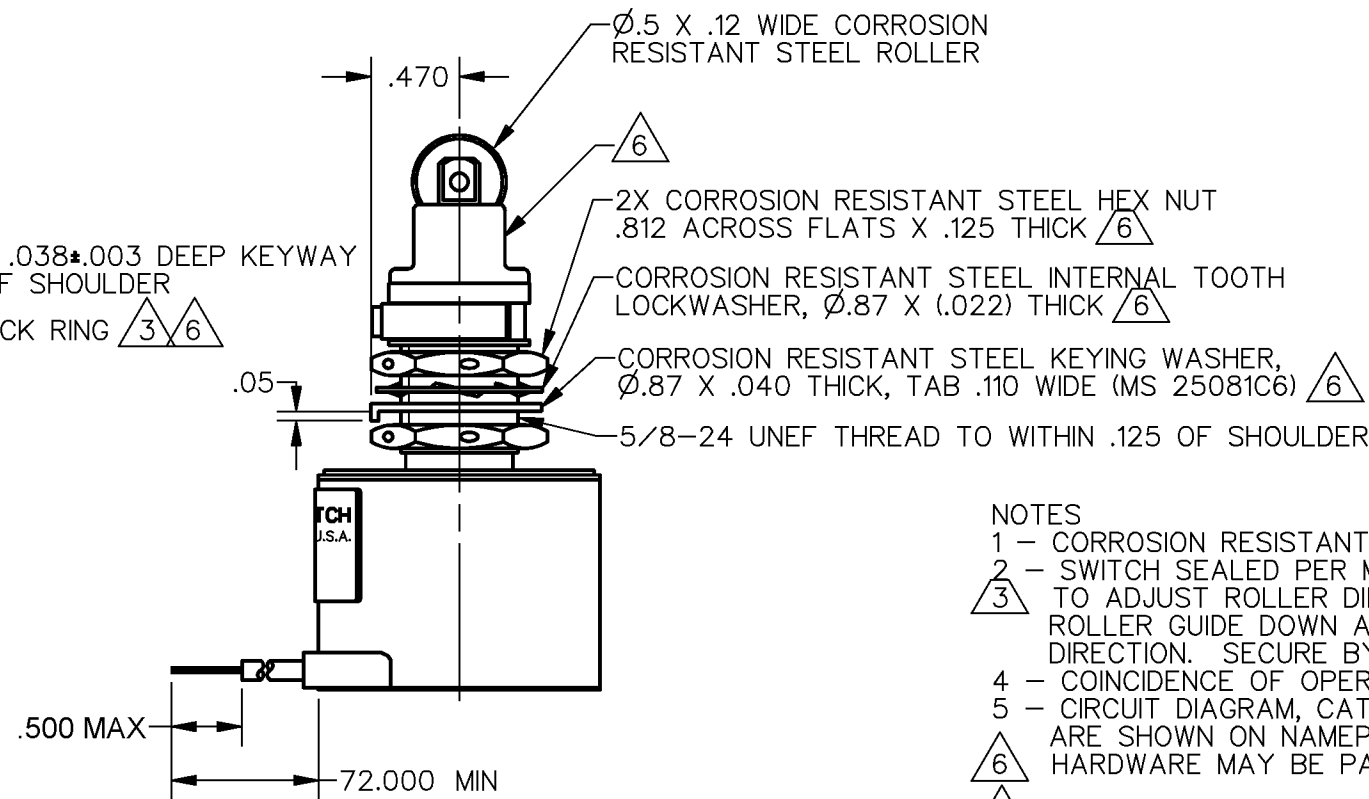
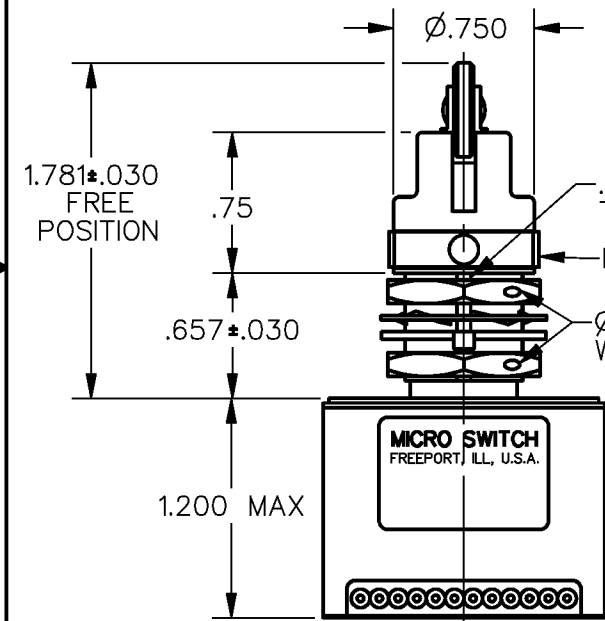
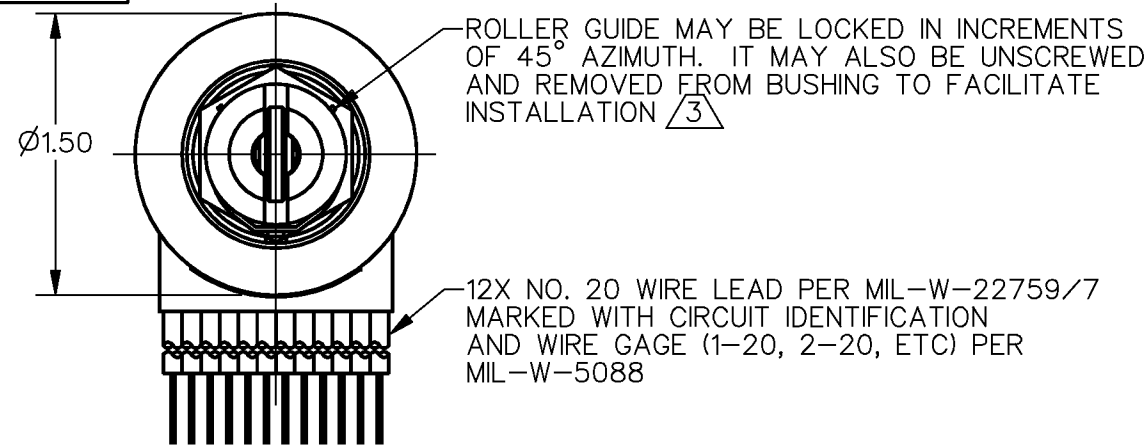


HONEYWELL  
PART NUMBER  
**25EN9-6**  
FAA-PMA

REV	DOCUMENT	CHANGED BY	CHECK
21	0011817	KR 17MAR05	AK



- NOTES
- 1 - CORROSION RESISTANT STEEL ENCLOSURE
  - 2 - SWITCH SEALED PER MIL-PRF-8805, SYMBOL 4
  - 3 - TO ADJUST ROLLER DIRECTION, REMOVE ROLLER GUIDE LOCK RING, SCREW ROLLER GUIDE DOWN AS FAR AS POSSIBLE, THEN UNSCREW TO DESIRED DIRECTION. SECURE BY REPLACING ROLLER GUIDE LOCK RING
  - 4 - COINCIDENCE OF OPERATING AND RELEASING POINTS: .010 OF PLUNGER TRAVEL
  - 5 - CIRCUIT DIAGRAM, CATALOG LISTING, DATE CODE, FED MFG CODE AND FAA-PMA ARE SHOWN ON NAMEPLATE
  - 6 - HARDWARE MAY BE PACKAGED UNASSEMBLED PER MIL-PRF-8805
  - 7 - FOR MANUFACTURING DETAIL SEE ASSEMBLY DAWING 25EN9-6 FOR FAA-PMA
  - 8 - WEIGHT: 14.5 OZ MAX

CHARACTERISTICS	ELECTRICAL DATA	
OPERATING FORCE ----- 6-12 LB	CONTACT ARRANGEMENT 4X S P D T	
FULL OVERTRAVEL FORCE ---- 30 LB MAX	28 VDC	
RELEASE FORCE ----- 4 LB MIN	LOAD	SEA LEVEL 50,000 FT
PRETRAVEL ----- .040 MAX	RES 4	4
DIFFERENTIAL TRAVEL ---- .030 MAX	IND 2	2
OVERTRAVEL ----- .250 MIN	MOTOR 4	
	LAMP	

DESIGN UNITS: INCH  
TOLERANCES UNLESS NOTED:

NO PLACE	X	±	-
ONE PLACE	.X	±	0.030
TWO PLACE	.XX	±	0.015
THREE PLACE	.XXX	±	0.005
FOUR PLACE	.XXXX	±	-
ANGLES		±	-

THIRD ANGLE PROJECTION

DRAWN	TSM	13 FEB 97
CHECK	-	-
THIS DRAWING COVERS A PROPRIETARY ITEM AND IS THE PROPERTY OF HONEYWELL. THIS DRAWING IS NOT TO BE COPIED OR USED WITHOUT THE PERMISSION OF HONEYWELL.		
INTERPRET PER ASME Y14.5M-1994 OTHER HONEYWELL ENGINEERING STANDARDS MAY APPLY		
RASTER		

<b>Honeywell</b>			
TITLE <b>SWITCH ENCLOSED</b>			
SIZE	TYPE	DRAWING NAME	REV
<b>B</b>	<b>I</b>	<b>25EN9-6</b>	<b>21</b>
SCALE	1:1	SHEET 1 OF 1	