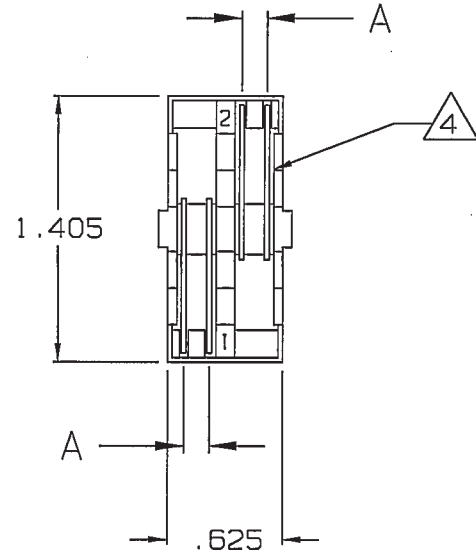
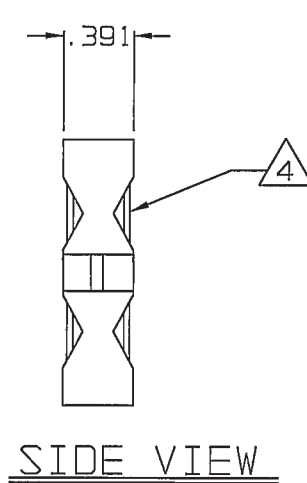


| DASH NO | MODEL NO | COLOR | A DIM | B DIM | C DIM |
|---------|----------|--------|-------|--------|--------|
| -1 | STC-W | GRAY | .156 | — | — |
| -2 | STC-F | LT GRN | — | .108/3 | .330/3 |
| -3 | STC-FR | CLEAR | .439 | .203 | — |
| -4 | STC-WM | BLUE | .125 | — | — |
| -5 | STC-DF | BLACK | — | .161 | .236 |
| -6 | STC-DF2 | DK GRN | .125 | — | — |

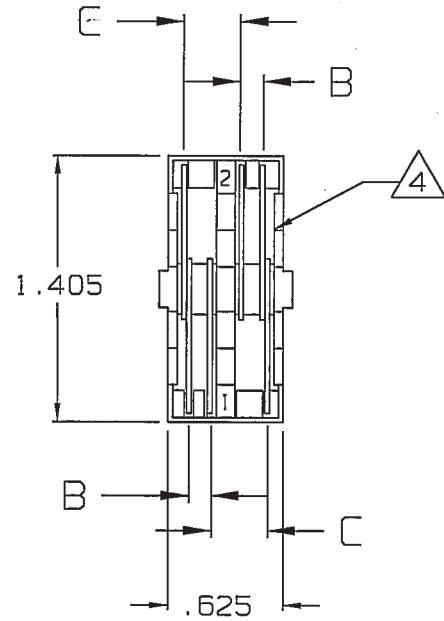
DATA CONTAINED IN THIS DOCUMENT IS PROPRIETARY TO TROMPETER ELECTRONICS INC. AND SHALL NOT BE DISCLOSED, COPIED OR USED FOR PROCUREMENT OR MANUFACTURE WITHOUT EXPRESS WRITTEN PERMISSION OF TROMPETER ELECTRONICS INC.

| REVISIONS | | 010-0029 | SH 1 |
|-----------|-----------------------|----------|----------|
| REV | DESCRIPTION | DATE | APPROVED |
| H | REVISED PER ECD 15861 | 5-19-05 | BS |

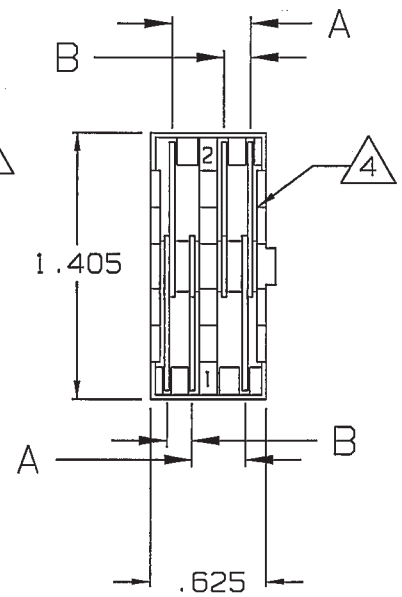
RED INDICATES ORIGINAL



-1/-4/-6
2-BLADE



-2/-5
3-BLADE



-3
3 - BLADE

4 SHARP EDGE OF BLADES
FACE NUMBERED SIDE
OF UNITS: -1, -2, & -4

3 MAY BE USED FOR TEI STANDARD
3-STEP STRIP DIMENSION REQUIREMENT

2. STRIPPING TOOL CASSETTE BOTH "W"
(WRENCH CRIMP), "F" (FULL CRIMP) "FR"
(FULL CRIMP RIGHT ANGLE UPLRN220), AND
"WM" (WRENCH CRIMP MINIATURE, PL50)
VERSIONS FOR USE WITH ST1 TOOL

1. ALL DIM ARE IN INCHES

| | | | |
|--|-----------------|--|-------------------------|
| INTERPRET DRAWING PER MIL-STD-100 DIMENSIONS ARE IN INCHES AND INCLUDE FINISH THICKNESS UNLESS OTHERWISE SPECIFIED | | TOL: UNLESS SPECIFIED .XX .XXX ±.003 .XXXX ±.0010 ANGLES±0°30' | |
| DRAWN AAH | DATE 5-11-05 | MATERIAL: | TITLE: |
| CHECKED P. Khan | 5-11-05 | FINISH: | STC |
| QUALITY MS | 5/12/05 | DO NOT SCALE DWG | SIZE A |
| MANUF JK | 5/12/05 | SCALE 1/1 | CAGE CODE 14949 |
| APPROVED BS | 5/16/05 | DATE: 6-18-79 | DRAWING NO. 010-0029 |
| CAD FILE NO. 010-0029H | | SHEET 1C | REV. H |



| | | | |
|-----------|--------------|------------------|-------------|
| NEXT ASSY | SCALE 1/1 | DATE: 6-18-79 | SHEET 1C |
|-----------|--------------|------------------|-------------|