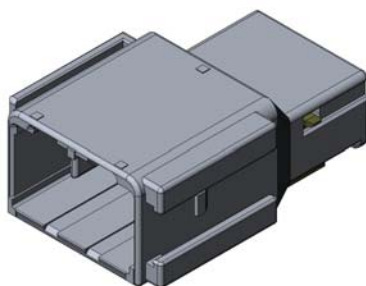




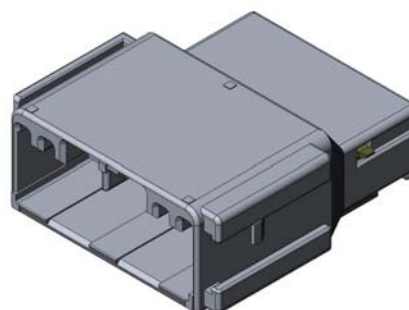
# Automotive Cable-to-Cable Compact Connector **MX34 Series (Relay Type)**

CONNECTOR  
MB-0254-1  
November 2012

**RoHS Compliant**



Relay 12 Position Housing



Relay 20 Position Housing

A relay type has been added to the line-up of the MX34 Series of automotive board-to-cable connectors to enhance the variety of connection types.

The MX34 Series relay type is available in 12 and 20 positions and can mate with existing mass-production MX34 socket connectors.

The MX34 features fastening locks in 3 locations around the relay connector, allowing it to be fixed in place by using a nylon clip and metal bar. In addition, connectors can also be fastened together in a row by using the fastening locks.

## Features

- Cable-to-Cable relay type
- Features a pre-set retainer that detects incomplete pin terminal insertion.
- Mating structure is strong against twisting by having multiple keys.
- Fastening locks allow connector to be fixed in place by using a nylon clip and metal bar.
- Connectors can be fastened together in a row by using the fastening locks.
- Can mate with MX34 socket.

## General Specifications

- |   |  |
|---|--|
| ■ No. of Contacts: 12, 20 positions                                   | ■ Rated Current: 3A                                  |
| ■ Contact Resistance:<br>5mΩ max. (initial)<br>10mΩ max. (after test) | ■ Insulation Resistance: 100MΩ min.                  |
| ■ Dielectric Withstanding Voltage:<br>AC 1,000Vr.m.s per minute       | ■ Mating Durability: 50 times                        |
|   | ■ Operating Temperature:<br>-40 Deg. C to +85 Deg. C |

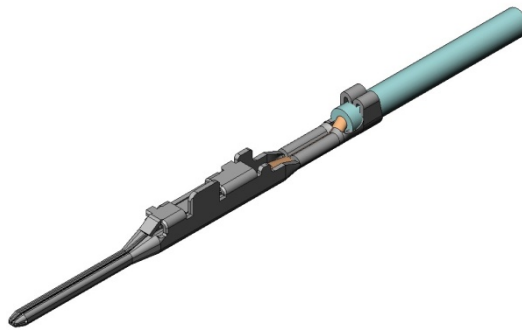
## Materials and Finishes

## ■ Relay Connector

Component	Material / Finish
Relay Housing	PPE+PA66 (Alloy)
Retainer	PPE+PA66 (Alloy)

## ■ Relay Pin Contact

Component	Material / Finish
Relay Pin Contact	Copper Alloy / Sn Plating



## Applicable Cable

Contact Part Number	Applicable Cable	SJ Drawing
M34P75C4F1	AVSS0.3mm <sup>2</sup> , CHFUS0.22mm <sup>2</sup> ~0.35mm <sup>2</sup>	SJ103146
M34P75C4F2	AVSS0.5mm <sup>2</sup> , CHFUS0.5mm <sup>2</sup> ~0.75mm <sup>2</sup> CAVS0.5mm <sup>2</sup>	SJ103147
M34P75C4F5	CHFUS 0.13mm <sup>2</sup>	SJ109337

## Crimp Tool

Contact Part Number	Semi-automatic Applicator
M34P75C4F1	3502-MX34D-2
M34P75C4F2	
M34P75C4F5	

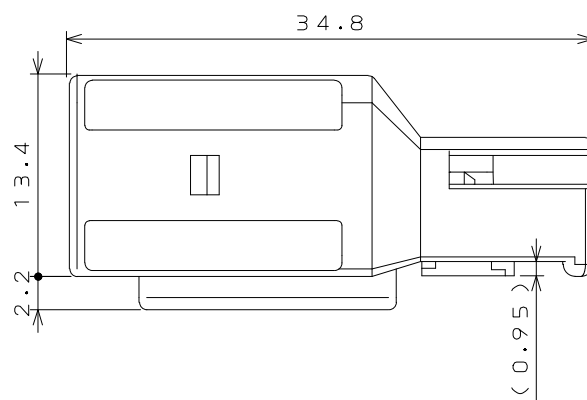
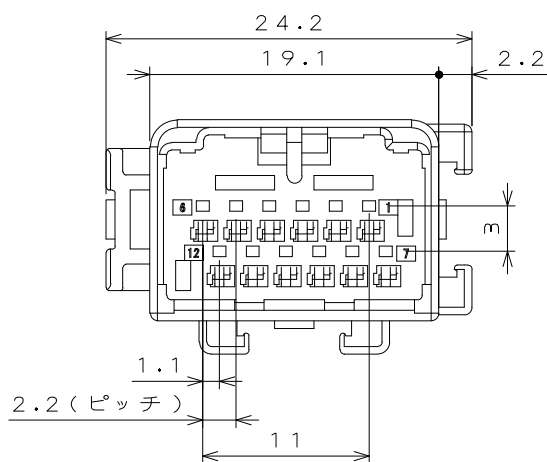
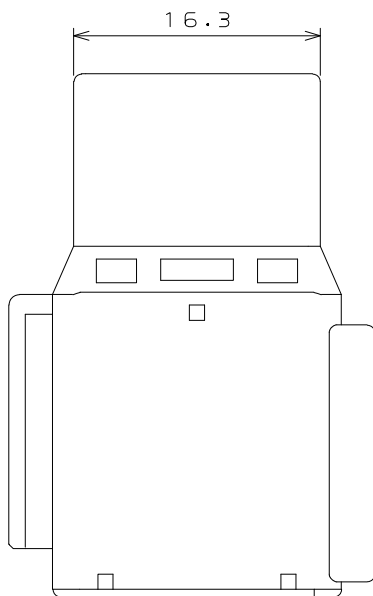
## Extraction Tool

ET-MX34P-1

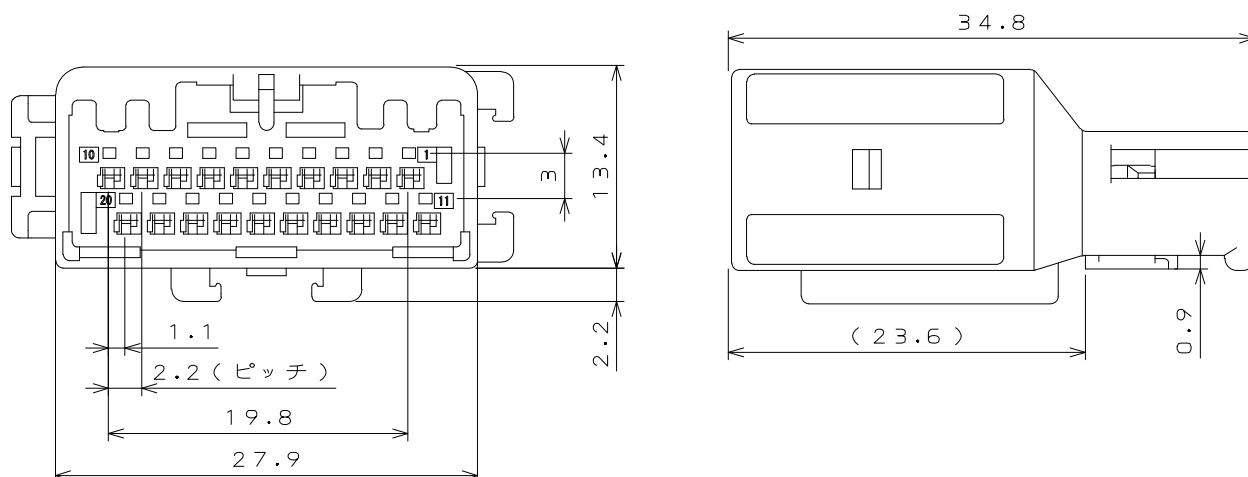
# Product Drawings

## ■ MX34012PF1 (Relay 12 Position Housing) (Drawing No.: SJ111563)

**Unit: mm**



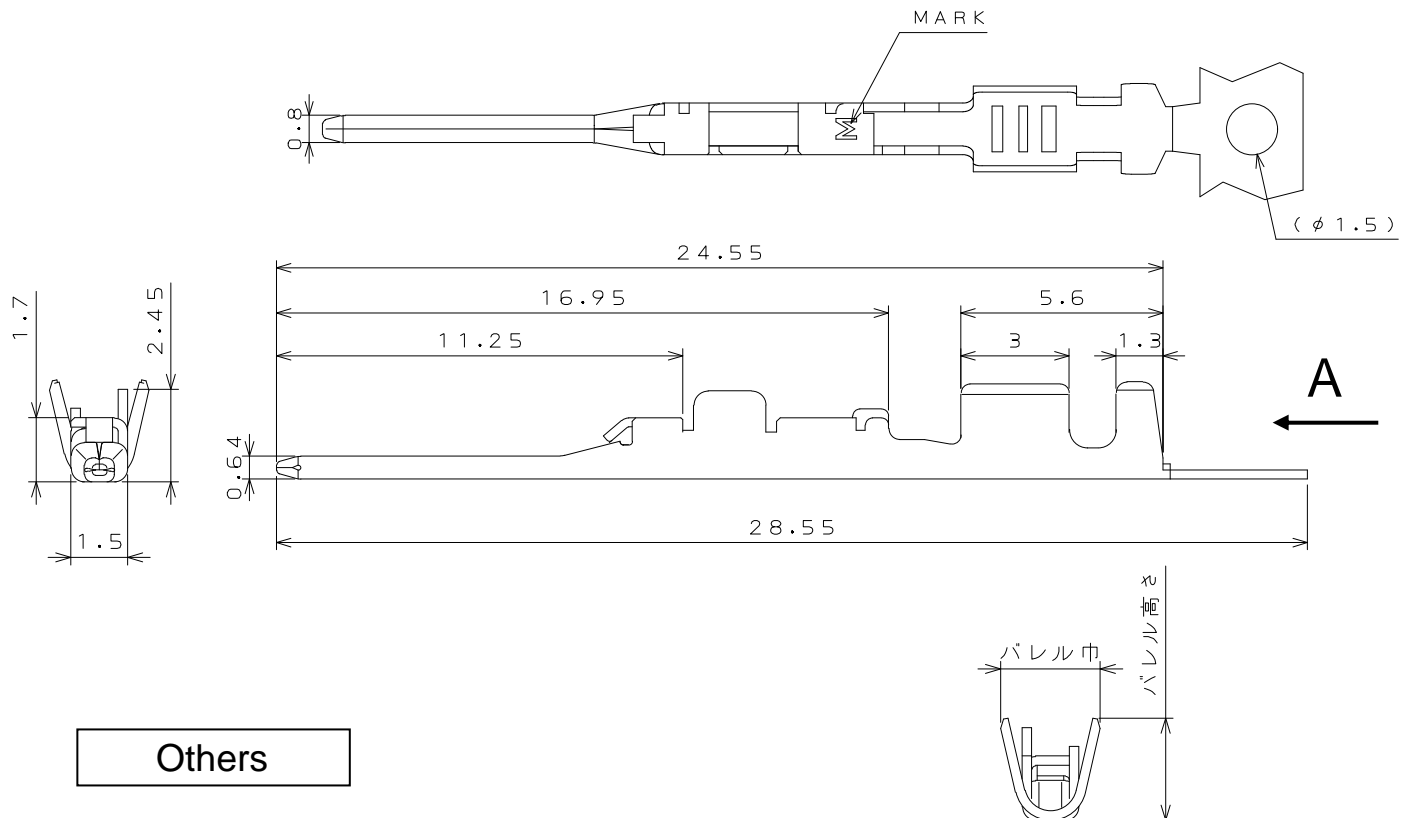
**Unit: mm**



# ■ Relay Pin Contact

**Unit: mm**

Part Number	MARK	Barrel Width	Barrel Height
M34P75C4F1	S	2.6	2.6
M34P75C4F2	M	2.65	2.7
M34P75C4F5	X	2.26	1.8


**Others**
**Specification**
**JACS-1754-4**
**Handling Instruction**
**JAHL-1754-1**
**Drawing viewed from  
direction A**

## Japan Aviation Electronics Industry, Limited

Product Marketing Division  
 Aobadai Building, 3-1-19, Aobadai, Meguro-ku, Tokyo 153-8539  
 Phone: +81-3-3780-2882 FAX: +81-3-3780-2946

**Notice:** Products shown in this brochure are made for the applications listed below. However, if the above-mentioned products are to be used in aerospace devices, marine cable-connection devices, atomic power control systems, medical equipment for life-support systems, or any other specific application requiring extremely high reliability, please contact JAE for further information.

Recommended applications: Computers, Office machines, Measuring devices, Telecommunication devices (Terminals, Mobile devices), AV devices, Household applications, FA devices, etc.

\* The specifications in this brochure are subject to change without notice. Please contact JAE for information.

# Mouser Electronics

Authorized Distributor

Click to View Pricing, Inventory, Delivery & Lifecycle Information:

[JAE Electronics:](#)

[M34P75C4F2](#)