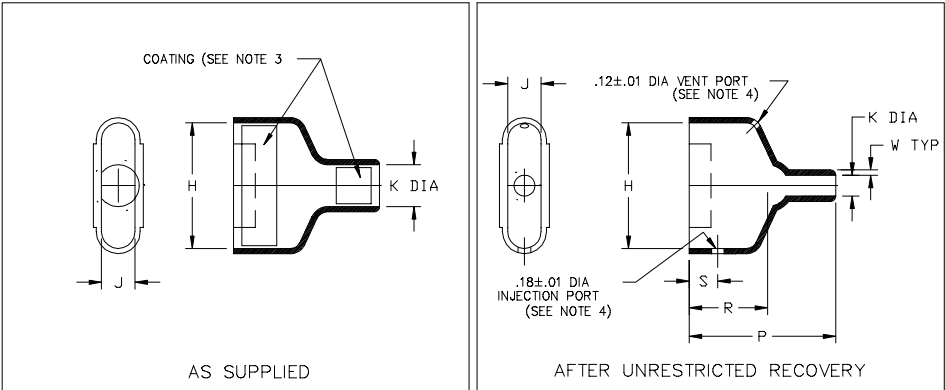


Thermofit[®] Molded Parts
Specification Control Drawing

Part Number : 214A511 thru 552
Description : Boot, Rectangular, Straight
Environmental, Subminiature

NOTES

- 1. All dimensions are in $\frac{\text{inches}}{\text{millimeters}}$
- 2. Dimensions appearing in table are as follows:
 - a - As Supplied
 - b - After Unrestricted Recovery
- 3. Coating is optional. As supplied dimensions appearing in table are for uncoated parts. When coating is added, entry diameters will be reduced by .06 max.
- 4. Molding ports are optional. When -00 modification number is specified molding ports will be located as shown.



| TABLE OF DIMENSIONS | | | | | | | | | | | |
|---------------------|----------------|----------------|---------------|---------------|---------------|---------------|----------------|----------------|---------------|---------------|--------------------------|
| PART NUMBER | H | | J | | K | | P | R | S | W | This Boot Fits Cannon |
| | Min | ±5% | Min | ±5% | Min | Max | | | | | |
| | a | b | a | b | a | b | | | | | |
| 214A511 | .83 [21,1] | .80 [20,3] | .49 [12,2] | .42 [10,7] | .31 [7,9] | .16 [4,1] | 1.31 [33,3] | .75 [19,1] | .31 [7,87] | .04 [1,02] | DED-9 |
| 214A521 | 1.15 [29,2] | 1.11 [28,2] | .49 [12,2] | .42 [10,7] | .40 [10,2] | .21 [5,3] | 1.53 [38,9] | .87 [22,1] | .31 [7,87] | .04 [1,02] | DAD-15 |
| 214A532 | 1.69 [42,9] | 1.66 [42,2] | .49 [12,2] | .42 [10,7] | .55 [14,0] | .32 [8,1] | 1.77 [45,0] | 1.00 [25,4] | .31 [7,87] | .04 [1,02] | DBD-25 |
| 214A542 | 2.35 [59,7] | 2.31 [58,7] | .49 [12,2] | .42 [10,7] | .68 [17,3] | .34 [8,6] | 2.10 [53,3] | 1.12 [28,4] | .31 [7,87] | .04 [1,02] | DCD-37 |
| 214A552 | 2.26 [57,4] | 2.28 [57,9] | .60 [15,2] | .54 [13,7] | .75 [19,1] | .42 [10,7] | 2.40 [61,0] | 1.25 [31,8] | .31 [7,87] | .04 [1,02] | DDD-50 |

Raychem
RAYCHEM CORPORATION
300 CONSTITUTION DRIVE
MENLO PARK, CALIFORNIA 94025

Revision : F
Date : 2/11/98

Part Number : 214A511 thru 552
Description : Boot, Rectangular, Straight
Environmental, Subminiature

Thermofit[®] Molded Parts
Specification Control Drawing

Part Number : 214A511 thru 552
Description : Boot, Rectangular, Straight
Environmental, Subminiature

| COMPATABILITY CHART | | | | | |
|---------------------|----------------------------|---------|-------------------|---------------|---------------------|
| MATERIAL DASH NO. | MATERIAL DESCRIPTION | RT SPEC | COATING SLASH NO. | COATING S NO. | COATING DESCRIPTION |
| -3 | Polyolefin, Semi-rigid | RT-301 | /42 | S-1017 | Adhesive |
| -4 | Polyolefin, Flexible | RT-1304 | /42 | S-1017 | Adhesive |
| -25 | Elastomer, Fluid Resistant | RT-1325 | /86 | S-1048 | Adhesive |
| | | | | | |
| | | | | | |
| | | | | | |

If this document is printed it becomes uncontrolled.
Check for the latest revision.

ORDERING INFORMATION

214A511 -XX -XX /XXX

Base part number _____

Material dash number _____
(See Compatability Chart)

Modification number _____
(If necessary, see front of scd binder
for a complete list)

Adhesive slash number _____
(If necessary, see Compatability Chart)

THIS DRAWING IS SUBJECT TO CHANGE WITHOUT NOTICE; CONSULT YOUR
NEAREST FIELD REPRESENTATIVE FOR CURRENT REVISION

Raychem
RAYCHEM CORPORATION
300 CONSTITUTION DRIVE
MENLO PARK, CALIFORNIA 94025

Revision : F
Date : 2/11/98

Part Number : 214A511 thru 552
Description : Boot, Rectangular, Straight
Environmental, Subminiature