

## INTRODUCTIONS

1. Power module incorporates an IEC connector, single or double-fuse (IEC 5x20mm) holder, and double-pole power switch, plus an EMI filter all-in-one easy-to-install unit.
2. All part numbers are UL, CSA and VDE approved.
3. With optional Y CAP. from 1000/3300pF.
4. Switch electrical lifetime: 10,000 cycles.  
Maximum inrush current: 50A

## SPECIFICATIONS

1. Maximum leakage current each line-to-ground@115VAC 60Hz: 0.2mA  
@250VAC 50Hz: 0.4mA
2. Hipot rating (one minute)  
line-to-ground: 2250VDC  
line-to-line: 1450VDC
3. Operating frequency: 50/60Hz
4. Rated voltage: 115/250VAC

## COMPONENTS

| PART NO. | Cx (uF) | L (mH) | Cy (pF) | R(Ω) |
|----------|---------|--------|---------|------|
| 03NB3    | 0.1     | 2.5    | 2200    | 1M   |
| 03NB4    |         |        |         |      |
| 03NB3S   |         |        |         |      |
| 04NB3    |         | 2.0    |         |      |
| 04NB4    |         |        |         |      |
| 04NB3S   |         |        |         |      |
| 06NB3    |         | 1.05   |         |      |
| 06NB4    |         |        |         |      |
| 06NB3S   |         |        |         |      |
| 10NB3    |         | 0.2    |         |      |
| 10NB4    |         |        |         |      |
| 10NB3S   |         |        |         |      |
| 03SB3    | 0.1     | 2.5    | 2200    | 1M   |
| 03SB4    |         |        |         |      |
| 03SB3S   |         |        |         |      |
| 04SB3    |         | 2.0    |         |      |
| 04SB4    |         |        |         |      |
| 04SB3S   |         |        |         |      |
| 06SB3    |         | 1.05   |         |      |
| 06SB4    |         |        |         |      |
| 06SB3S   |         |        |         |      |
| 10SB3    |         | 0.2    |         |      |
| 10SB4    |         |        |         |      |
| 10SB3S   |         |        |         |      |

## ELECTRICAL SCHEMATIC



## TYPE & RATED CURRENT

| DELTA PART NO.            |        | 03NB3/SB3 | 04NB3/SB3 | 06NB3/SB3 | 10NB3/SB3 | 03NB4/SB4 | 04NB4/SB4 | 06NB4/SB4 | 10NB4/SB4 |
|---------------------------|--------|-----------|-----------|-----------|-----------|-----------|-----------|-----------|-----------|
| RATED CURRENT             | 115VAC | 3A        | 4A        | 6A        | 10A       | 3A        | 4A        | 6A        | 10A       |
|                           | 250VAC | 3A        | 4A        | 6A        | 6A        | 3A        | 4A        | 6A        | 6A        |
| IEC CONNECTOR             |        | ▲         | ▲         | ▲         | ▲         | ▲         | ▲         | ▲         | ▲         |
| FUSE                      |        | DOUBLE    | DOUBLE    | DOUBLE    | DOUBLE    | DOUBLE    | DOUBLE    | DOUBLE    | DOUBLE    |
| *DOUBLE POLE POWER SWITCH |        | ▲         | ▲         | ▲         | ▲         | ▲         | ▲         | ▲         | ▲         |
| ELECTRICAL SCHEMATIC      |        | FIG.A     | FIG.A     | FIG.A     | FIG.A     | FIG.B     | FIG.B     | FIG.B     | FIG.B     |

3S Single fuse  
NB4,SB4 W/O switch

## INSERTION LOSS (TYPICAL)



## MINIMUM INSERTION LOSS IN dB

| COMMON MODE (L-G) IN 50 OHM SYSTEM |               |     |     |     |    |    |
|------------------------------------|---------------|-----|-----|-----|----|----|
| CURRENT RATING                     | FREQUENCY-MHz |     |     |     |    |    |
|                                    | .15           | .50 | 1.0 | 5.0 | 10 | 30 |
| 03NB3/SB3                          | 20            | 25  | 30  | 38  | 40 | 40 |
| 03NB4/SB4                          | 20            | 25  | 30  | 38  | 40 | 40 |
| 03NB3S/SB3S                        | 20            | 25  | 30  | 38  | 40 | 40 |
| 04NB3/SB3                          | 20            | 25  | 25  | 40  | 40 | 40 |
| 04NB4/SB4                          | 20            | 25  | 25  | 40  | 40 | 40 |
| 04NB3S/SB3S                        | 20            | 25  | 25  | 40  | 40 | 40 |
| 06NB3/SB3                          | 12            | 18  | 24  | 35  | 40 | 40 |
| 06NB4/SB4                          | 12            | 18  | 24  | 35  | 40 | 40 |
| 06NB3S/SB3S                        | 12            | 18  | 24  | 35  | 40 | 40 |
| 10NB3/SB3                          | 3             | 8   | 10  | 20  | 30 | 45 |
| 10NB4/SB4                          | 3             | 8   | 10  | 20  | 30 | 45 |
| 10NB3S/SB3S                        | 3             | 8   | 10  | 20  | 30 | 45 |

| COMMON MODE (L-L) IN 50 OHM SYSTEM |               |     |     |     |    |    |
|------------------------------------|---------------|-----|-----|-----|----|----|
| CURRENT RATING                     | FREQUENCY-MHz |     |     |     |    |    |
|                                    | .15           | .50 | 1.0 | 5.0 | 10 | 30 |
| 03NB3/SB3                          | 4             | 12  | 18  | 38  | 40 | 40 |
| 03NB4/SB4                          | 4             | 12  | 18  | 38  | 40 | 40 |
| 03NB3S/SB3S                        | 4             | 12  | 18  | 38  | 40 | 40 |
| 04NB3/SB3                          | 3             | 10  | 15  | 30  | 35 | 35 |
| 04NB4/SB4                          | 3             | 10  | 15  | 30  | 35 | 35 |
| 04NB3S/SB3S                        | 3             | 10  | 15  | 30  | 35 | 35 |
| 06NB3/SB3                          | 4             | 10  | 15  | 35  | 40 | 40 |
| 06NB4/SB4                          | 4             | 10  | 15  | 35  | 40 | 40 |
| 06NB3S/SB3S                        | 4             | 10  | 15  | 35  | 40 | 40 |
| 10NB3/SB3                          | 5             | 12  | 15  | 30  | 30 | 40 |
| 10NB4/SB4                          | 5             | 12  | 15  | 30  | 30 | 40 |
| 10NB3S/SB3S                        | 5             | 12  | 15  | 30  | 30 | 40 |

## MECHANICAL CONSTRUCTION



NB3



SUGGESTED MOUNTING CUTOUT (MOUNTING FROM FRONT)  
 L According to Panel Thickness  
 0.8-2.0mm L=55.9  
 2.1-3.2mm L=56.2

NB3,3S

UNIT:  $\frac{\text{INCH}}{\text{mm}}$



NB4

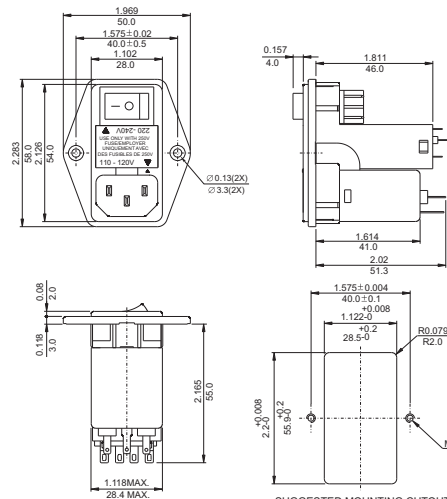


NB4

SUGGESTED MOUNTING CUTOUT  
(MOUNTING FROM FRONT)  
L According to Panel Thickness  
0.8-2.0mm L=55.5  
2.1-3.2mm L=56.2



SB3,3S

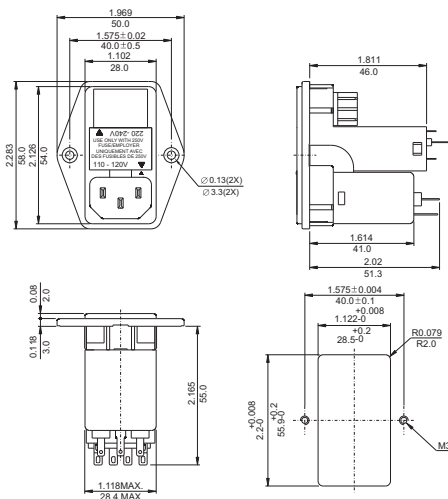


SB3,3S

SUGGESTED MOUNTING CUTOUT  
(MOUNTING FROM FRONT)



SB4



SB4

SUGGESTED MOUNTING CUTOUT  
(MOUNTING FROM FRONT)

UNIT: INCH  
mm