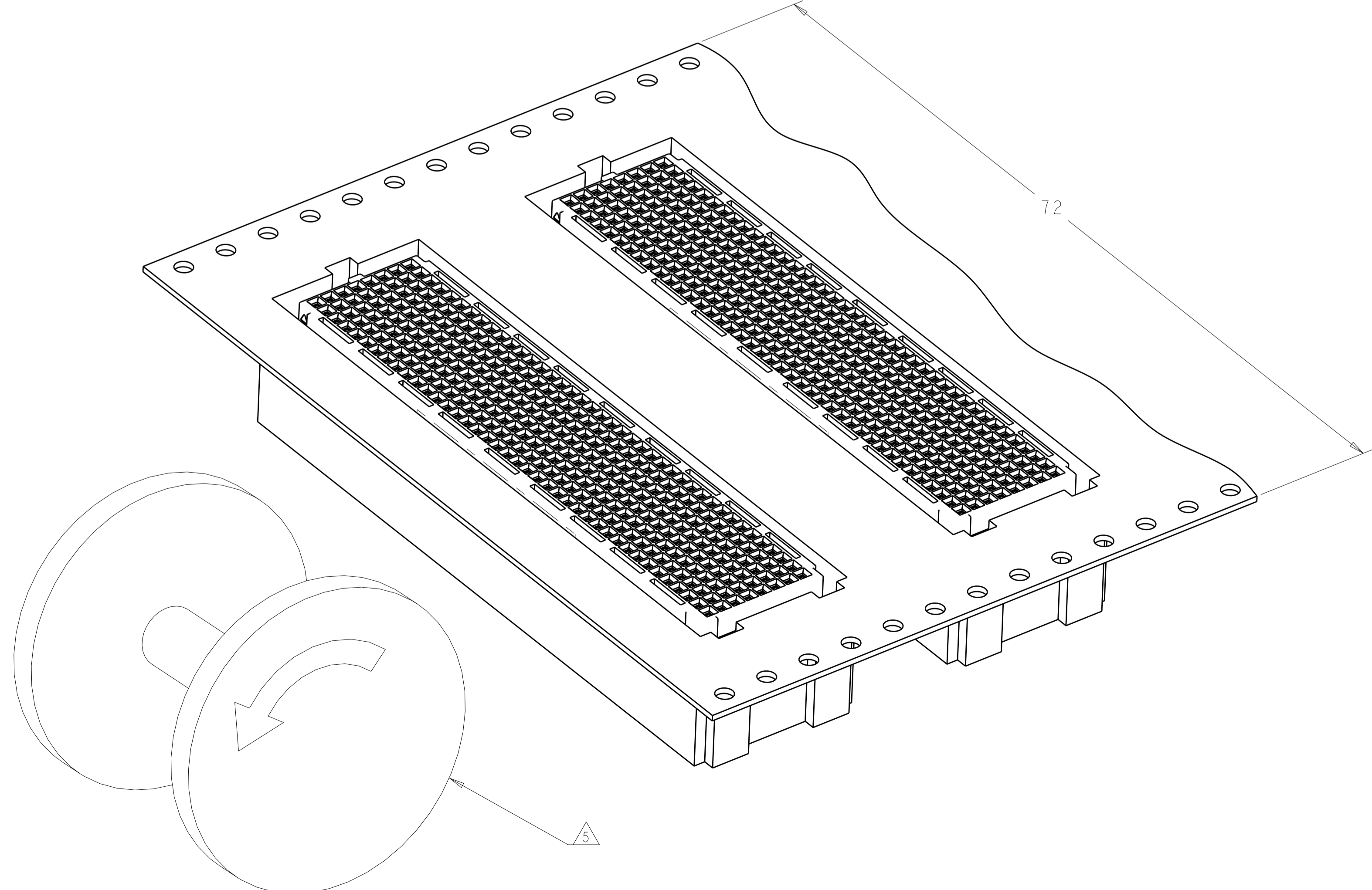
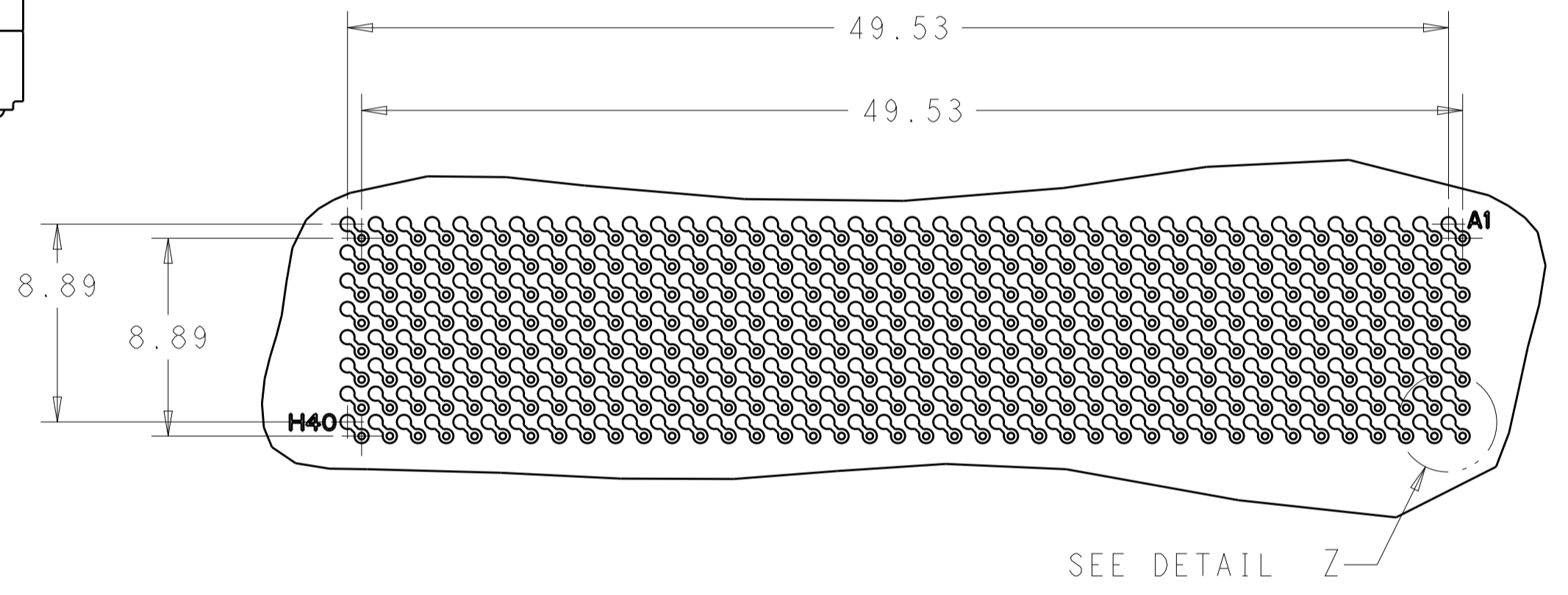
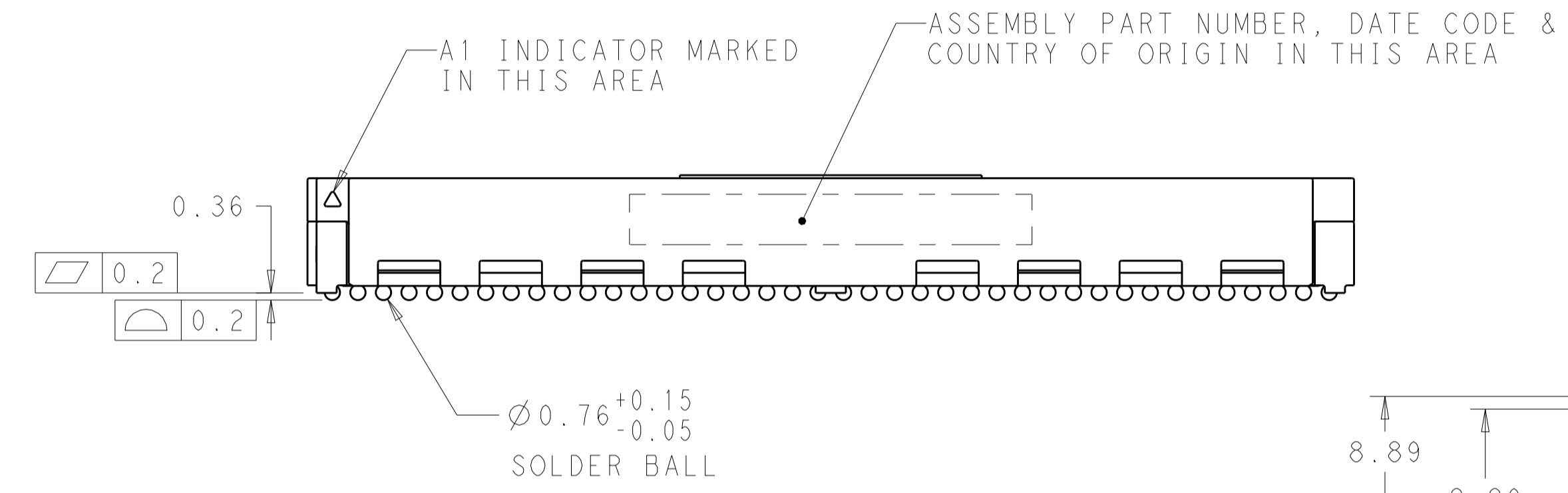
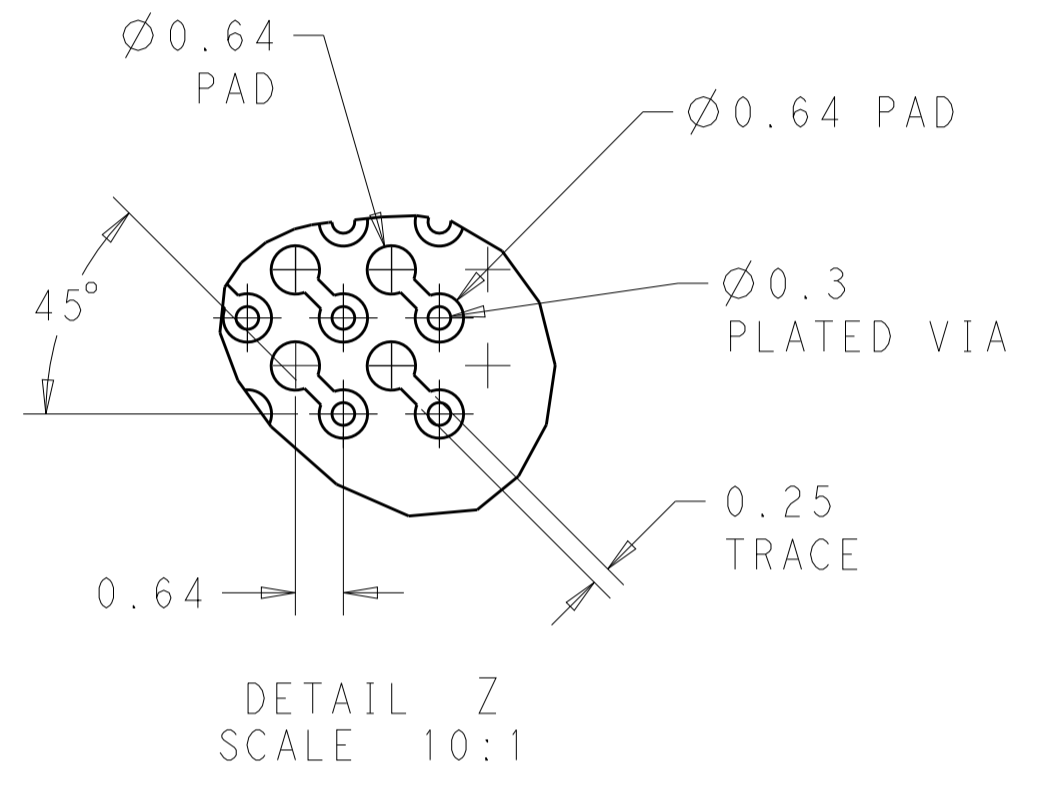
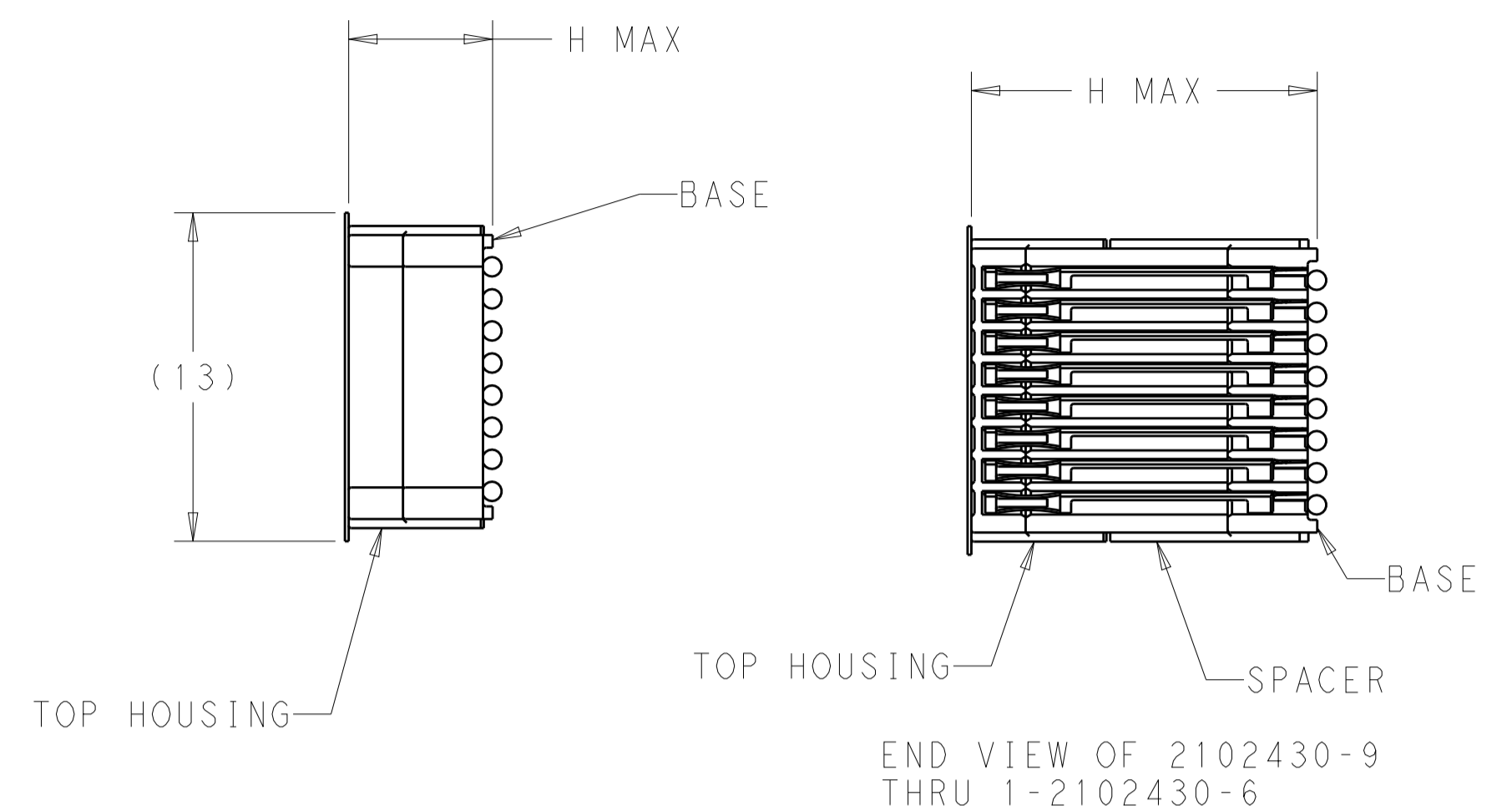
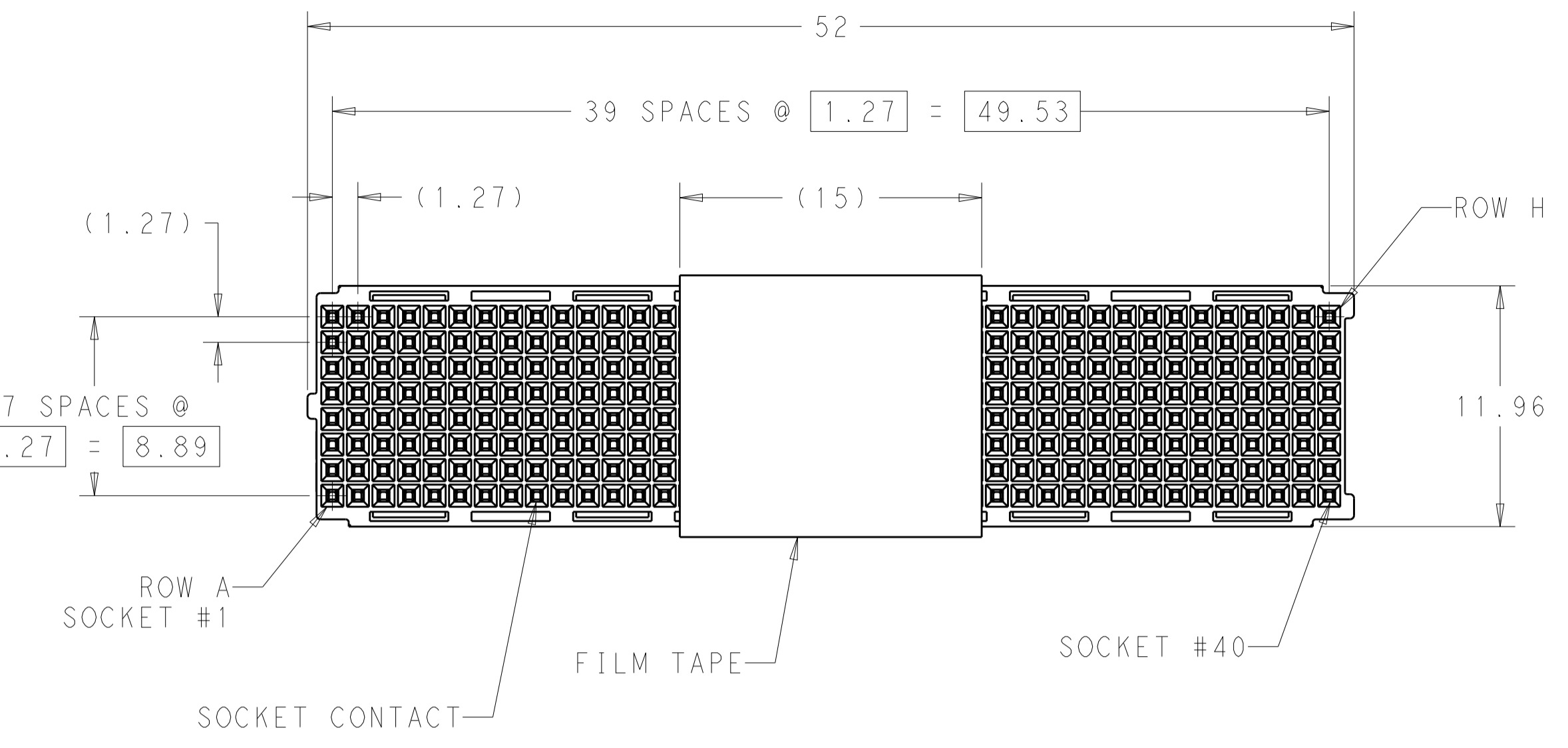


REVISIONS					
P.	LTN	DESCRIPTION	DATE	DMN	APVD
A		RELEASED PER ECO 15-017318	12-10-15	CT	DH

- NOTES:
- △ MATERIAL: LCP, COLOR: NATURAL  
 CONTACT: BERYLLIUM COPPER  
 SOLDER BALL: SEE TABLE  
 FILM TAPE: KAPTON WITH SILICONE ADHESIVE
  - △ FINISH: CONTACT: GOLD (SEE TABLE) ON MATING AREA OVER  
 NICKLE ON ENTIRE CONTACT.
  - 3. PRODUCT IS PACKAGE ON TAPE AND REEL.
  - △ PRELIMINARY PART.
  - △ DIAGRAM REPRESENTS THE REELING DIRECTION OF THE PACKAGED  
 CONNECTORS. THERE ARE 10 EMPTY POCKETS AT THE BEGINNING  
 OF THE REEL AND 15 EMPTY POCKETS AT THE END OF THE REEL.



△	Part Number	Stack Height (mm)	Gold Plating Thickness	H Max Ref	Solder Ball Material	Part Number
△	2102429-4	15	0.76 μm	11	LEAD FREE PER SAC405	1-2102430-6
△	2102429-3	15	0.76 μm	11	TIN LEAD	1-2102430-5
△	2102429-2	15	1.27 μm	11	LEAD FREE PER SAC405	1-2102430-4
△	2102429-1	15	1.27 μm	11	TIN LEAD	1-2102430-3
	2102429-4	18	0.76 μm	14	LEAD FREE PER SAC405	1-2102430-2
	2102429-3	18	0.76 μm	14	TIN LEAD	1-2102430-1
	2102429-2	18	1.27 μm	14	LEAD FREE PER SAC405	1-2102430-0
	2102429-1	18	1.27 μm	14	TIN LEAD	2102430-9
△	2102429-4	12	0.76 μm	8	LEAD FREE PER SAC405	2102430-8
△	2102429-3	12	0.76 μm	8	TIN LEAD	2102430-7
	2102429-4	10	0.76 μm	6	LEAD FREE PER SAC405	2102430-6
	2102429-3	10	0.76 μm	6	TIN LEAD	2102430-5
△	2102429-2	12	1.27 μm	8	LEAD FREE PER SAC405	2102430-4
△	2102429-1	12	1.27 μm	8	TIN LEAD	2102430-3
	2102429-2	10	1.27 μm	6	LEAD FREE PER SAC405	2102430-2
	2102429-1	10	1.27 μm	6	TIN LEAD	2102430-1
	MATING PART NUMBER	STACK HEIGHT (mm)	GOLD PLATING THICKNESS	H MAX REF	SOLDER BALL MATERIAL	PART NUMBER

THIS DRAWING IS A CONTROLLED DOCUMENT. DWG: MCKIBBEN, JOHN 18 JUL 2012  
 CHK: DOWHOWER, KENNETH 18 JUL 2012  
 APVD: -

DIMENSIONS: mm. TOLERANCES UNLESS OTHERWISE SPECIFIED:  
 0 PLC ±0.5  
 1 PLC ±0.13  
 2 PLC ±0.013  
 3 PLC ±0.001  
 4 PLC ±0.0001  
 ANGLES ±1°

MATERIAL: △. FINISH: △.

PRODUCT SPEC: 108-2411  
 APPLICATION SPEC: 114-13279  
 WEIGHT: -

CUSTOMER DRAWING. SCALE: 4:1. SHEET 1 OF 1. REV A.

STE TE Connectivity  
 NAME: ASSEMBLY, SOCKET, 320 POSITION, MINI BOX STACKING CONNECTOR  
 SIZE: A100779. CAGE CODE: 2102430