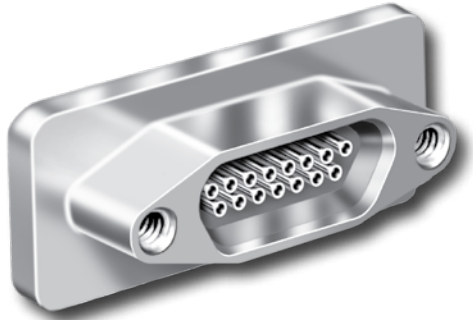


# 177-140H and 177-704H MIL-DTL-83513 Type Micro-D Hermetic Connectors Solder Mount



**Solder, Braze or Weld** these 177-140 hermetic Micro-D connectors. Featuring a matched glass-to-metal seal, these socket receptacles are designed for panel mounting.

**Kovar® Shells and Contacts** comply with applicable MIL-DTL-83513 requirements and are 100% intermateable with standard connectors.

**Choose 9 to 100 Contacts**, with gold-plated contacts and nickel-plated shells. These connectors feature integral female jackposts.

## HOW TO ORDER SOLDER CUP AND PC TAIL CONNECTORS

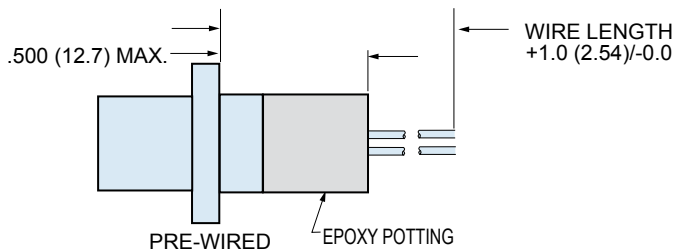
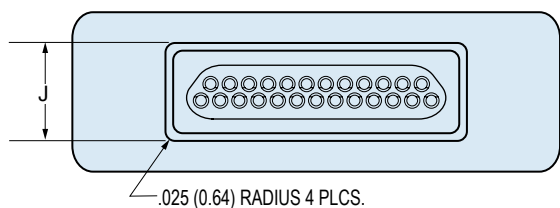
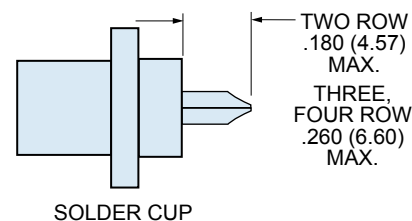
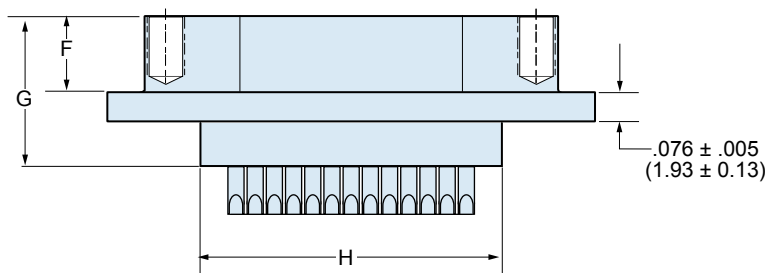
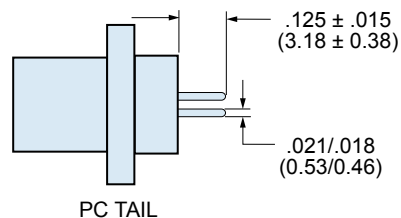
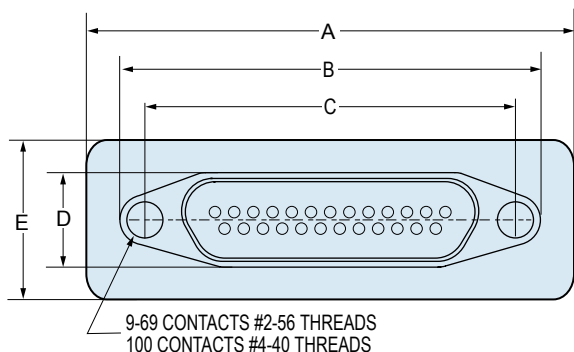
Series	Layout Number of Contacts	Contact Type	Termination Type
<b>177-140H</b> Micro-D Hermetic Socket Receptacle, Solder or Weld Mounting	9	<b>S</b> – Socket	<b>S</b> – Solder Cup <b>P</b> – PC Tail
	15		
	21		
	25		
	31		
	37		
	51 100		
<i>Sample Part Number</i>			
<b>177-140H</b>	<b>15</b>	<b>S</b>	<b>P</b>

## HOW TO ORDER PRE-WIRED CONNECTORS

Series	Layout	Contact Type	Wire Gage (AWG)	Wire Type	Wire Color	Wire Length Inches
<b>177-704H</b>	9	<b>S</b> – Socket	<b>6</b> – #26 <b>8</b> – #28 <b>0</b> – #30	<b>K</b> – M22759/11 600 Vrms Teflon® (TFE) (Not Available in #30 AWG) <b>J</b> – M22759/33 600 Vrms Modified Cross-Linked Tefzel® (ETFE)	<b>1</b> – White <b>2</b> – Yellow <b>5</b> – Color-Coded Stripes Per MIL-STD-681 (#26 gage only) <b>7</b> – Ten Color Repeat	<b>18</b>  Wire Length In Inches. "18" Specifies 18 Inches.
	15					
	21					
	25					
	31					
	37					
	51 100					
<i>Sample Part Number</i>						
<b>177-704H</b>	<b>25</b>	<b>S</b>	<b>6</b>	<b>K</b>	<b>1</b>	<b>– 18</b>



# 177-140H and 177-704H MIL-DTL-83513 Type Micro-D Hermetic Connectors Solder Mount



## DIMENSIONS

Layout	A Max.		B MAX.		C		D Max.		E Max.		F		G Max.		H		J	
	In.	mm.	In.	mm.	In.	mm.	In.	mm.	In.	mm.	In.	mm.	In.	mm.	In.	mm.	In.	mm.
<b>9S</b>	.785	19.94	.695	14.35	.565	14.35	.250	6.35	.310	7.87	.195	4.95	.394	10.01	.398	10.11	.268	6.81
<b>15S</b>	1.030	26.16	.855	21.71	.715	18.16	.250	6.35	.425	10.80	.195	4.95	.394	10.01	.535	13.59	.255	6.48
<b>21S</b>	1.180	29.97	1.005	25.53	.865	21.97	.250	6.35	.425	10.80	.195	4.95	.394	10.01	.750	19.05	.255	6.48
<b>25S</b>	1.280	32.51	1.105	28.06	.965	24.51	.250	6.35	.425	10.80	.195	4.95	.394	10.01	.785	19.94	.255	6.48
<b>31S</b>	1.430	36.32	1.255	31.88	1.115	28.32	.250	6.35	.425	10.80	.195	4.95	.394	10.01	.935	23.75	.255	6.48
<b>37S</b>	1.580	40.13	1.425	36.20	1.265	32.13	.250	6.35	.425	10.80	.195	4.95	.394	10.01	1.085	27.56	.255	6.48
<b>51S 2 row</b>	1.930	49.02	1.615	41.02	1.775	45.08	.310	7.87	.425	10.80	.199	5.05	.394	10.01	1.030	26.16	.297	7.5
<b>51S 3 row</b>	1.530	38.86	1.215	30.86	1.361	34.57	.310	7.87	.468	11.89	.199	5.05	.394	10.01				
<b>100S</b>	2.260	57.40	1.800	45.72	2.010	51.05	.330	8.38	.517	13.13	.199	5.05	.394	10.01	1.765	44.8	.355	9.0