

FOPC-02-02-003-12-01

OPA-S-1-F

## FOPC, OPA SERIES

# OPTICAL PATCH CABLE AND ADAPTOR

## SPECIFICATIONS

For complete specifications see  
www.samtec.com?FOPC

**Compliant Specifications:**  
TIA-604-5-D (FOCIS 5)  
TIA-568-C.3  
IEC-61754-7-1

## FOPC

## END 1

## END 2

## CABLE LENGTH

## FIBERS

## CONSTRUCTION

–01  
= MTP Male

–02  
= MTP Female

–01  
= MTP Male

–02  
= MTP Female

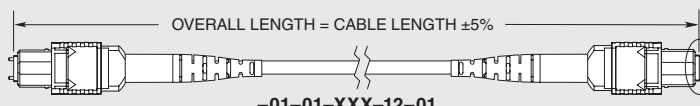
–003  
= 3 Meters

–010  
= 10 Meters

–100  
= 100 Meters  
(Other lengths  
available as  
custom parts)

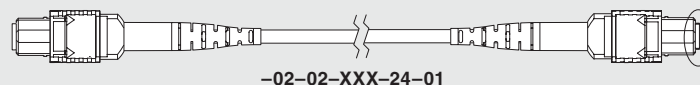
–12,  
–24

–01  
= 3 mm Round Jacket



–01-01-XXX-12-01

12 FIBER



–02-02-XXX-24-01

24 FIBER

**Note:** Some lengths, styles  
and options are non-standard,  
non-returnable.

## SPECIFICATIONS

For complete specifications see  
www.samtec.com?OPA

**Compliant Specifications:**  
TIA-604-5-D (FOCIS 5)  
IEC-61754-7

**Recommended  
Panel Thickness:**  
(1.75 mm) .069"  
(The OPA can be installed  
with any panel thickness  
but mounting hardware is  
needed for any thickness  
that is not (1.75 mm) .069".  
Contact the Optics Group at  
Optics@samtec.com for  
questions about panel thickness  
and mounting hardware.)

## OPA

## PORTS

## KEY

## FLANGE

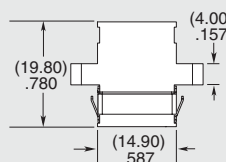
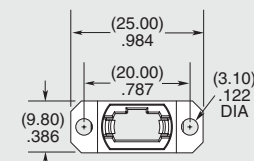
–S  
= Single

–D  
= Double

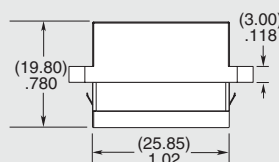
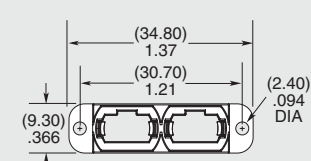
–1  
= Opposed

–2  
= Aligned

–F  
= Full



–S



–D

**Note:** Some lengths, styles  
and options are non-standard,  
non-returnable.

Due to technical progress, all designs, specifications and components are subject to change without notice.

[WWW.SAMTEC.COM](http://WWW.SAMTEC.COM)

All parts within this catalog are built to Samtec's specifications.

Customer specific requirements must be approved by Samtec and identified in a Samtec customer-specific drawing to apply.