

# PRODUCT DATA DRAWING

CAD  
GENERATED  
DRAWING

DCN  
CONTROLLED  
DOCUMENT

DWG. NO.

8018-6174

## MATERIAL :

BODY,  
PRESS CAP &  
COUPLING NUT: STAINLESS STEEL PER AMS-5640

LOCK RING  
& CONTACT: BERYLLIUM COPPER PER ASTM B196

RIVET: BRASS PER ASTM B16

INSULATOR: PTFE PER ASTM D1710

GASKET: SILICONE RUBBER PER ZZ-R-765,  
CLASS IIB, GRADE 50/60

RESISTOR ELEMENT: ALUMINA SUBSTRATE WITH  
NICHROME RESISTOR

## FINISH :

BODY: GOLD PER ASTM B 488, TYPE I,  
GRADE C, CLASS 1.27; OVER NICKEL  
PER AMS-QQ-N-290, CLASS 1

PRESS CAP &  
COUPLING NUT: GOLD PER ASTM B 488, TYPE I,  
GRADE C, CLASS .50; OVER NICKEL  
PER AMS-QQ-N-290, CLASS 1

CONTACT: GOLD PER ASTM B 488, TYPE II,  
GRADE C, CLASS 1.52; OVER NICKEL  
PER AMS-QQ-N-290, CLASS 1

RIVET: NICKEL PER AMS-QQ-N-290, CLASS 1  
GRADE G. FINISH: SEMI-BRIGHT

## PERFORMANCE :

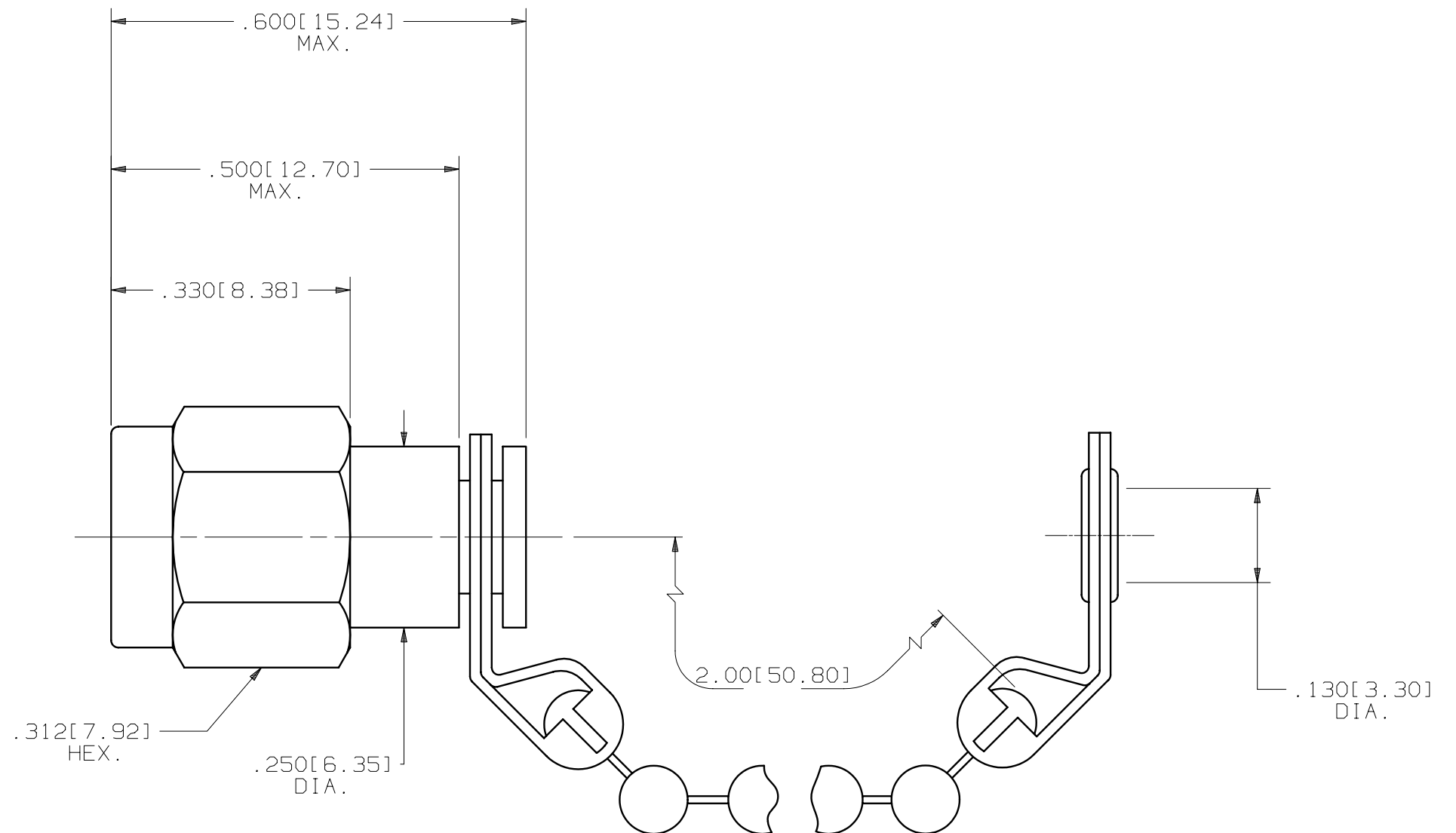
IMPEDANCE: 50 OHMS

FREQ. RANGE: DC TO 18.0 GHz

VSWR: 1.30:1 DC TO 18 GHz

OPERATING TEMP.: -55°C TO +125°C

AVG. POWER: 1 WATT



SYM.	DESCRIPTION	DATE	APPR.	UNLESS OTHERWISE SPECIFIED: 1) ALL DIMENSIONS ARE AFTER PLATING. 2) BREAK CORNERS & EDGES .005 R. MAX. 3) CHAM. 1s1 & LAST THDS. 4) SURFACE ROUGHNESS 63 / MIL-STD-10. 5) DIAS. ON COMMON CENTERS TO BE CONCENTRIC WITHIN .005 T.I.R. 6) REMOVE ALL BURRS.	DIMENSIONS ARE IN INCHES TOLERANCES:			SV Microwave, Inc. 2400 Centrepark West Drive, Suite 100 West Palm Beach, FL 33409
				DECIMALS .X ±.030 .XX ±.015 .XXX ±.005	FRACTIONAL ±1/64	ANGULAR X° ±1°0' X°X' ±15'	TITLE:	
-	REL.DCN 28574	07/02	STW		SEE ABOVE		□" AREA:	SMA PLUG TERMINATION WITH BEADED CHAIN
A	REV.DCN 29948	05/03	STW		SEE ABOVE		N/A	
B	REV.DCN 30711	11/03	STW		FINISH: SEE ABOVE			DWG. NO.
C	REV.DCN 31895	12/04	CCC		SIZE B	CAGE NO. 95077	SCALE 5X	8018-6174
					CHECKED: STW 07/03/02			
					APPROVED: STW 07/03/02			