

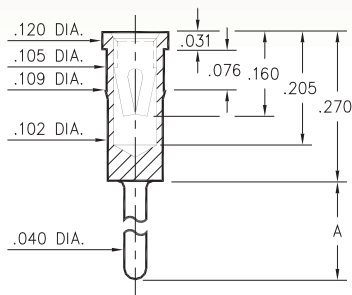
PIN RECEPTACLES

FOR .040" - .060" DIAMETER PINS (#03 CONTACT)
FOR .059" - .063" DIAMETER PINS (#42 CONTACT)

0433/8433

X433-0-15-XX-03-XX-04-0

Press-fit in .106 mounting hole

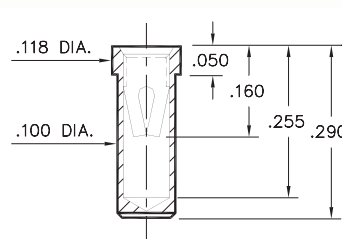


Basic Part Number	Length A
0433-0	.120
8433-0	.330

0435/0436

043X-0-15-XX-03-XX-10-0

Solder mount in .102 min. mounting hole
 Also available on 24mm wide carrier tape:
 950 parts per 13" reel
 Order as: 0435-0-57-XX-03-XX-10-0

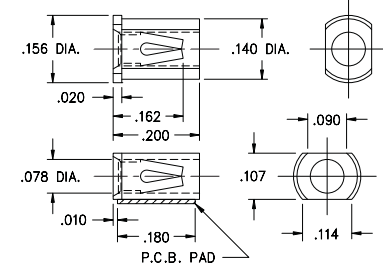


Basic Part Number	Dia. C	Length K
0435-0	.118	.050
0436-0	.125	.070

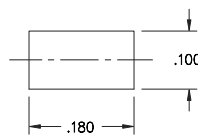
4064

4064-0-18-XX-03-XX-40-0

Surface mount
 Also available on 16mm wide carrier tape:
 2,400 parts per 13" reel
 Order as: 4064-0-58-XX-03-XX-40-0



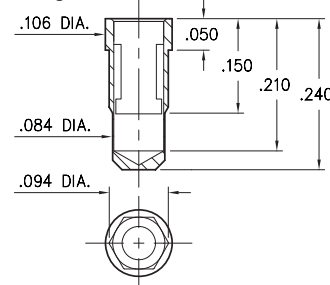
P.C.B. Layout



0342

0342-0-15-XX-42-XX-10-0

Hex press-fit in .090±.002 plated through-hole

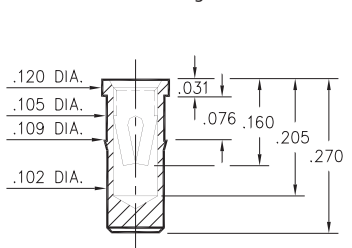


- 0342 receptacle uses Mill-Max's new #42 Contact. This receptacle will accept the Ø.061 ±.002 power pins of ¼ brick DC/DC converters.
- #42 contact can be ordered in standard receptacles that use #03 contact; or it can be specified as the spring element inside custom made receptacles.

0434

0434-0-15-XX-03-XX-10-0

Press-fit in .106 mounting hole



Mechanical Data #42 Contact:

Insertion/Extraction Force with a Ø.061 (nominal) pin:

First Cycle		2nd & Subsequent Cycles	
Insertion Force	Extraction Force	Insertion Force	Extraction Force
20N	6N	10N	6N

Compliance Test (the "spring back" characteristic of the contact to accept Ø.059 small pin after insertion of a Ø.063 large pin):

Initial Cycle with Ø.059 pin		Second Cycle with Ø.063 pin		Third Cycle with Ø.059 pin	
Ins. Force	Ext. Force	Ins. Force	Ext. Force	Ins. Force	Ext. Force
18N	6N	22N	7N	3N	2N

(Insertion/Extraction Forces are in Newtons and measured with polished steel gage pins having elliptical shaped tips).

SPECIFICATIONS:

Shell Material: Brass Alloy 360, 1/2 Hard

Contact Material: Beryllium Copper Alloy 172, HT

Dimensions: Inches

Tolerances On: Lengths: ±.005
 Diameters: ±.002
 Angles: ± 2°



ORDER CODE: XXXX - X - 1X - XX - XX - XX - XX - 0

BASIC PART #

SPECIFY SHELL FINISH:

- 01 200 µ" TIN/LEAD OVER NICKEL
- ◆ 80 200 µ" TIN OVER NICKEL (RoHS)
- ◆ 15 10 µ" GOLD OVER NICKEL (RoHS)

SPECIFY CONTACT FINISH:

- 01 200 µ" TIN/LEAD OVER NICKEL
- ◆ 80 200 µ" TIN OVER NICKEL (RoHS)
- ◆ 27 30 µ" GOLD OVER NICKEL (RoHS)

SELECT CONTACT:

#03 or #42 CONTACT (DATA ON PAGE 259)

