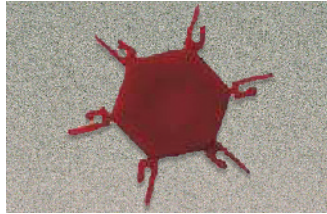


Coding Spline
 Working Temp: 125°C
 Color: Red
 Body: PA66/6 UL94-Vo
 Application: Plug-in Connectors

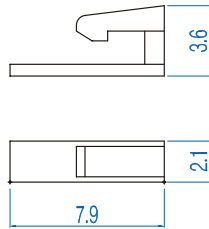


POL-P

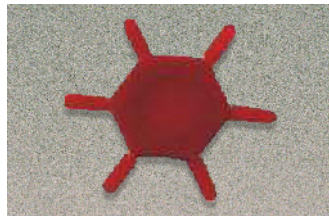
Cat. #	Length (mm)	Std. Pk.
POL-P	7.90	30/5

Used for parts:

- PVXX-5.00, 5.08, 7.50
- PHXX-5.00, 5.08, 7.50
- PVPXX-5.00, 5.08, 7.50
- PHPXX-5.00, 5.08, 7.50
- PDSHXX-5.00, 5.08
- PDSVXX-5.00, 5.08
- PDVXX-5.00, 5.08
- PDHXX-5.00, 5.08
- PIXX-5.00, 5.08
- PIPXX-5.00, 5.08
- SFXX-5.00, 5.08



Coding Spline
 Working Temp: 125°C
 Color: Red
 Body: PA66/6 UL94-Vo
 Application: Plug-in Connectors

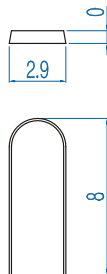


POL-S

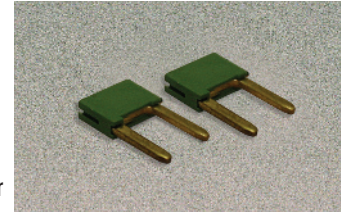
Cat. #	Length (mm)	Std. Pk.
POL-S	7.90	30/5

Used for parts:

- SHXX-5.00, 5.08, 7.50
- PVPXX-3.50, 3.81
- PHPXX-3.50, 3.81
- SVFXX-5.08
- SVP-5.08

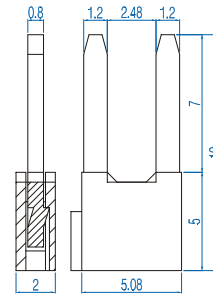


Jumpers, Adjacent
 Working Temp: 125°C
 Color: Green
 Body: PA66/6 UL94-Vo
 Application: Jumper Connection
 Design: 5.08 Spacing Modular

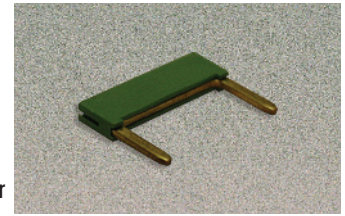


PT5

Cat. #	Length (B) (mm)	Std. Pk.
PT5	10.16	100



Jumpers, Alternate
 Working Temp: 125°C
 Color: Green
 Body: PA66/6 UL94-Vo
 Application: Jumper Connection
 Design: 10.16 Spacing Modular



PT10

Cat. #	Length (B) (mm)	Std. Pk.
PT10	10.16	100

