

**PLEASE CHECK WWW.MOLEX.COM FOR LATEST PART INFORMATION**

**Part Number:** [0877153915](#)  
**Status:** **Active**  
**Overview:**  
**Description:** 1.00mm (.039") Pitch, PCI Express\* Connector, 280 Circuits, Nylon 4/6 Glass-filled, Black Housing, Phosphor Bronze, 0.38µm (15µ") Gold (Au) Plating, with Plastic Pegs, 3.00mm (.118") Solder tail, Lead Free

**Agency Certification**

CSA LR19980

**General**

Product Family Edge Card Connectors  
 Series 87715  
 Component Type Edgecard to PCB  
 Overview pci\_express\_card\_edge\_connector  
 Product Name PCI Express\*

**Physical**

Circuits (Loaded) 280  
 Circuits (maximum) 280  
 Circuits Detail All Signal  
 Durability (mating cycles max) 50  
 Entry Angle Vertical (Top Entry)  
 Flammability 94V-0  
 Keying to Mating Part Yes  
 Material - Plating Mating Gold  
 Material - Plating Termination Tin  
 PC Tail Length (in) 0.118 In  
 PC Tail Length (mm) 3.00 mm  
 PCB Locator Yes  
 PCB Retention Yes  
 PCB Thickness Recommended (in) 0.093 In  
 PCB Thickness Recommended (mm) 2.40 mm  
 Packaging Type Tray  
 Pitch - Mating Interface (in) 0.039 In  
 Pitch - Mating Interface (mm) 1.00 mm  
 Pitch - Term. Interface (in) 0.039 In  
 Pitch - Term. Interface (mm) 1.00 mm  
 Plating min: Mating (µin) 15  
 Plating min: Mating (µm) 0.38  
 Polarized to Mating Part Yes  
 Temperature Range - Operating -55°C to +85°C  
 Termination Interface: Style Through Hole

**Electrical**

Current - Maximum per Contact 1.1A  
 Voltage - Maximum 50V AC (RMS)/DC

**Material Info**

**Reference - Drawing Numbers**

Packaging Specification PK-87715-206  
 Product Specification PS-87715-206  
 Sales Drawing SD-87715-206  
 Test Summary TS-87715-206

\* PCI Express is a registered trademark of PCI-SIG®

**EU RoHS**  
**ELV and RoHS**  
**Compliant**  
**REACH SVHC**  
 Not Reviewed  
**Halogen-Free**  
**Status**  
**Not Reviewed**

**China RoHS**



**Need more information on product environmental compliance?**

Email [productcompliance@molex.com](mailto:productcompliance@molex.com)  
 For a multiple part number RoHS Certificate of Compliance, [click here](#)

Please visit the [Contact Us](#) section for any non-product compliance questions.

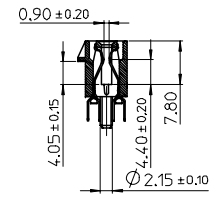
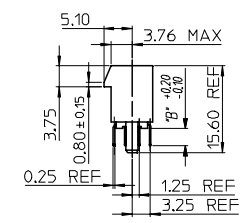
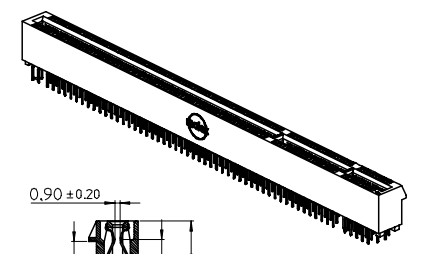
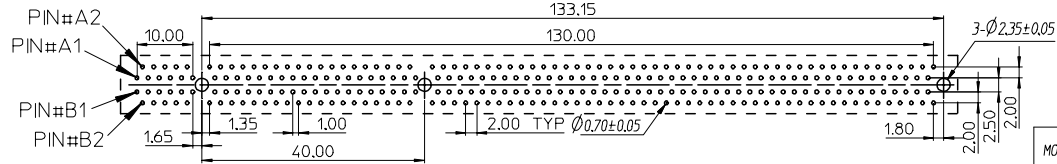
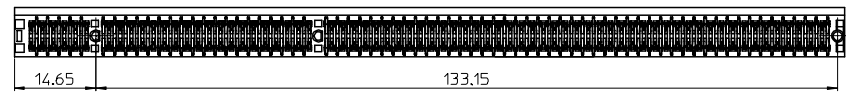
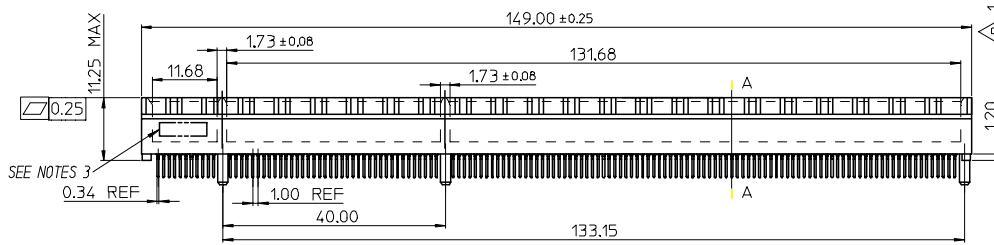
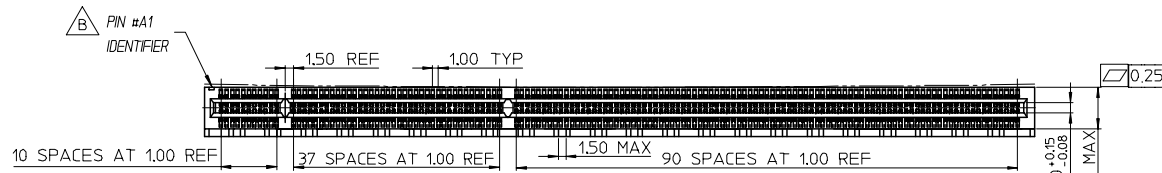
**Search Parts in this Series**  
 87715Series

**Mates With**  
 PCI Express Card

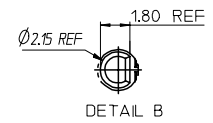
This document was generated on 06/04/2010

**PLEASE CHECK [WWW.MOLEX.COM](http://WWW.MOLEX.COM) FOR LATEST PART INFORMATION**

7 6 5 4 3 2 1



SECTION A-A



| MOLEX PIN  | CIRCUIT SIZE | HOUSING MATERIAL | HOUSING COLOR | TERMINAL MATERIAL | CONTACT PLATING | SOLDERTAIL PLATING                                      | DIMB* |
|------------|--------------|------------------|---------------|-------------------|-----------------|---|-------|
| 87715-3914 | 280          | NYLON 46         | BLACK         | PHOSPHOR BRONZE   | GOLD FLASH      | 100 MICRORINCH TIN OVER<br>50 MICRORINCH NICKEL OVERALL | 3.00  |
| 87715-3915 | 280          | NYLON 46         | BLACK         | PHOSPHOR BRONZE   | 15 MICRORINCH   | 100 MICRORINCH TIN OVER<br>50 MICRORINCH NICKEL OVERALL | 3.00  |
| 87715-3916 | 280          | NYLON 46         | BLACK         | PHOSPHOR BRONZE   | 30 MICRORINCH   | 100 MICRORINCH TIN OVER<br>50 MICRORINCH NICKEL OVERALL | 3.00  |
| 87715-3917 | 280          | NYLON 46         | BLACK         | PHOSPHOR BRONZE   | GOLD FLASH      | 100 MICRORINCH TIN OVER<br>50 MICRORINCH NICKEL OVERALL | 2.54  |
| 87715-3918 | 280          | NYLON 46         | BLACK         | PHOSPHOR BRONZE   | 15 MICRORINCH   | 100 MICRORINCH TIN OVER<br>50 MICRORINCH NICKEL OVERALL | 2.54  |
| 87715-3919 | 280          | NYLON 46         | BLACK         | PHOSPHOR BRONZE   | 30 MICRORINCH   | 100 MICRORINCH TIN OVER<br>50 MICRORINCH NICKEL OVERALL | 2.54  |

- NOTES:  
 1.MATERIALS:  
 1-1.HOUSING:SEE TABLE GLASS FIBER FILLED UL94V-0  
 COLOR:SEE TABLE  
 1-2.CONTACT:SEE TABLE  
 2.PLATING:  
 2-1.CONTACT AREA:SEE TABLE  
 2-2.SOLDER TAIL:SEE TABLE  
 2-3.UNDER PLATING:SEE TABLE  
 3.DATE CODE:TO BE PRINTED  
 4.PRODUCT SPECIFICATION REFER TO PS-87715-200  
 5.PACKAGE SPECIFICATION REFER TO PK-87715-206  
 6.TEST SUMMARY:REFER TO TS-87715-206  
 7.LEAD FREE AND ROHS COMPLIANT.

|  |                               |  |              |  |              |              |  |                        |  |
|--|-------------------------------|--|--------------|--|--------------|--------------|--|------------------------|--|
| EWR 2006-0005 & 2006-0019<br>2005-0094<br>EC NO: SH2006-0100<br>DRWN:ALL IN 2006/05/15<br>CHKD: 2006/05/15<br>APPR:WWSCHANG 2006/05/16 | QUALITY SYMBOLS<br>▽=0<br>▽=0 | GENERAL TOLERANCES (UNLESS SPECIFIED)                      |              | DIMENSION STYLE<br>MM ONLY   |              | SCALE        | DESIGN UNITS<br>METRIC   | THIRD ANGLE PROJECTION |  |
|  |                               |  | mm           | INCH   | DRAWN BY     | DATE         | TITLE  |                        |  |
|  |                               | 4 PLACES   | ± ---        | ± ---  | TOM          | 2005/03/22   | 1.0 EDGE CARD 280 CKT<br>VERTICAL DIP CONNECTOR<br>(LEAD FREE VERSION) |                        |  |
|  |                               | 3 PLACES   | ± ---        | ± ---  | CHECKED BY   | DATE         |  |                        |  |
| 2 PLACES   | ± 0.25                        | ± ---  | ALL IN       | 2005/03/22   |              |              |  |                        |  |
| 1 PLACE  | ± 0.25                        | ± ---  | APPROVED BY  | DATE   |              |              |  |                        |  |
|  |                               | ANGULAR ± 3 °  | WWSCHANG     | 2005/03/22   |              |              |  |                        |  |
|  |                               | DRAFT WHERE APPLICABLE<br>MUST REMAIN<br>WITHIN DIMENSIONS | MATERIAL NO. | SEE TABLE  | DOCUMENT NO. | SD-87715-206 | SHEET NO.  | 1 OF 2                 |  |
|  |                               |  | SIZE         | THIS DRAWING CONTAINS INFORMATION THAT IS PROPRIETARY TO MOLEX<br>INCORPORATED AND SHOULD NOT BE USED WITHOUT WRITTEN PERMISSION |              |              |  |                        |  |

6 5 4 3 2 1

7 6 5 4 3 2 1

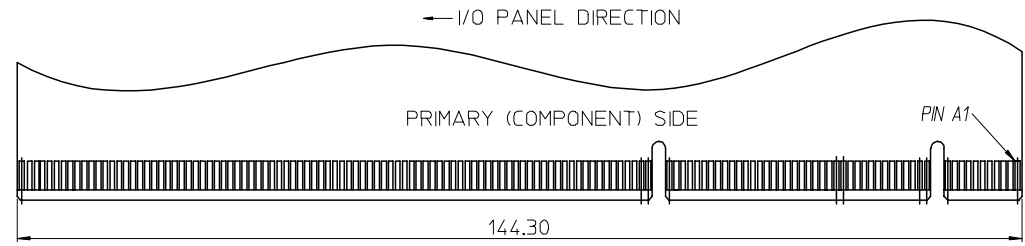
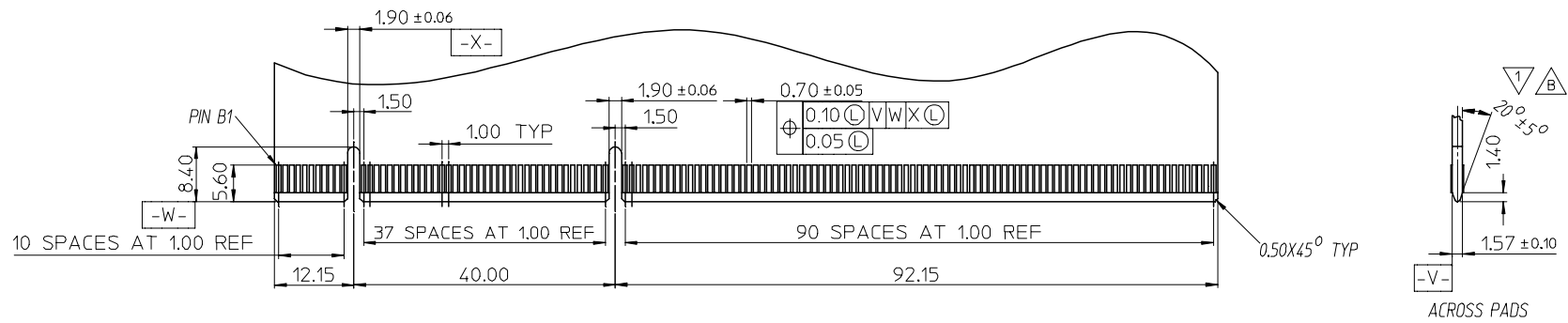
E E

D D

C C

B B

A A



△ I/O PANEL → DIRECTION  
DAUGHTER CARD  
SECONDARY (SOLDER) SIDE

△ CHAMFER EDGES MUST BE FREE OF CUTTING BURRS.

|  |                    |                 |  |       |                            |                              |  |                        |                        |  |  |  |
|--|--------------------|-----------------|--|-------|----------------------------|------------------------------|--|------------------------|------------------------|--|--|--|
| SEE SHEET 1<br>EC NO: SH2006-0100<br>DRWN: ALL IN<br>CHKD:<br>APPR: WWSCHANG<br>2006/05/15<br>2006/05/15<br>2006/05/16 | DESCRIPTION<br>REV | QUALITY SYMBOLS | GENERAL TOLERANCES (UNLESS SPECIFIED)                      |       | DIMENSION STYLE<br>MM ONLY |                              | SCALE<br>1:1   | DESIGN UNITS<br>METRIC | THIRD ANGLE PROJECTION |  |  |  |
|  |                    | ▽ = 0<br>◻ = 0  | mm   | INCH  | DRAWN BY<br>TOM            | DATE<br>2005/03/22           | TITLE<br>1.0 EDGE CARD 280 CKT<br>VERTICAL DIP CONNECTOR<br>(LEAD FREE VERSION)  |                        |                        |  |  |  |
|  |                    |                 | 4 PLACES ± ---   | ± --- | CHECKED BY<br>ALL IN       | DATE<br>2005/03/22           |  |                        |                        |  |  |  |
|  |                    |                 | 3 PLACES ± ---   | ± --- | APPROVED BY<br>WWSCHANG    | DATE<br>2005/03/22           |  |                        |                        |  |  |  |
|  |                    |                 | 2 PLACES ± 0.25  | ± --- | MATERIAL NO.<br>SEE TABLE  | DOCUMENT NO.<br>SD-87715-206 |  |                        |                        |  |  |  |
|  | 1 PLACE ± 0.25     | ± ---           | DRAFT WHERE APPLICABLE<br>MUST REMAIN<br>WITHIN DIMENSIONS |       | SIZE<br>A 4                |                              | THIS DRAWING CONTAINS INFORMATION THAT IS PROPRIETARY TO MOLEX<br>INCORPORATED AND SHOULD NOT BE USED WITHOUT WRITTEN PERMISSION |                        |                        |  |  |  |
|  |                    |                 | ANGULAR ± 3 °  |       |                            |                              | MOLEX MOLEX INCORPORATED   |                        | SHEET NO.<br>2 OF 2    |  |  |  |

6 5 4 3 2 1