

88.80

21.24

NOTE 5

83.80

SIGNAL CONTACTS

S12

10x 1.27 PITCH

D

S22

2.54

3.88
MATING HEIGHT

TOP SURFACE
OF PCB

7.25

4.00
HOLD-DOWN PEG
SEE TABLE 2

DIM "A"
TYP TAIL LENGTH
(SEE TABLE 2)

22x 2.54 PITCH

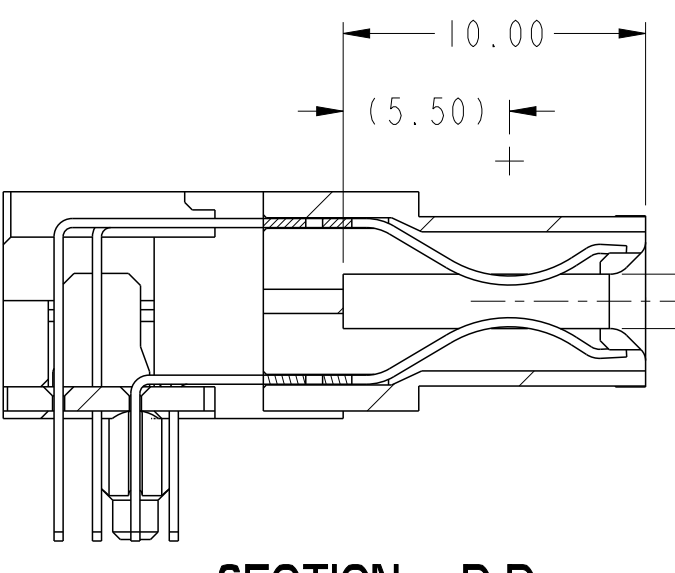
POWER CONTACTS

P40 & P39
OMITTED

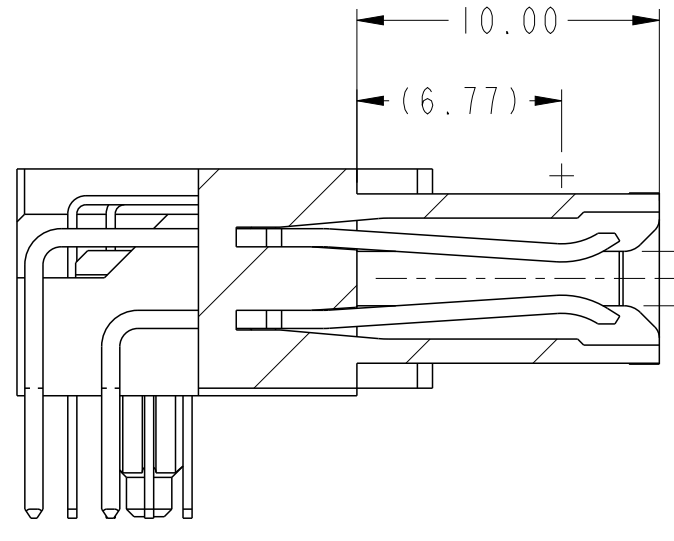
P27

P26

P13 & P14
OMITTED



SECTION D-D



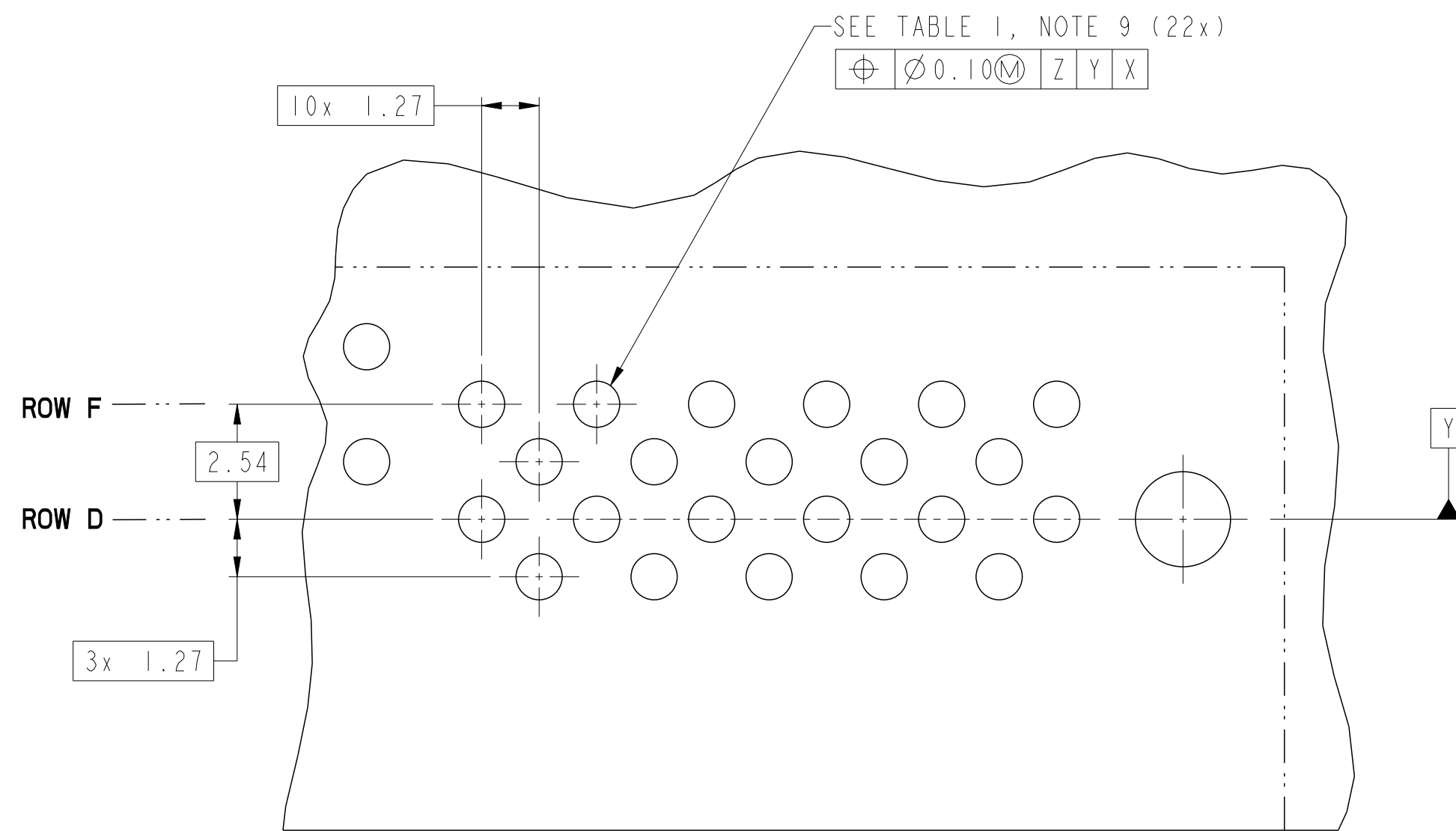
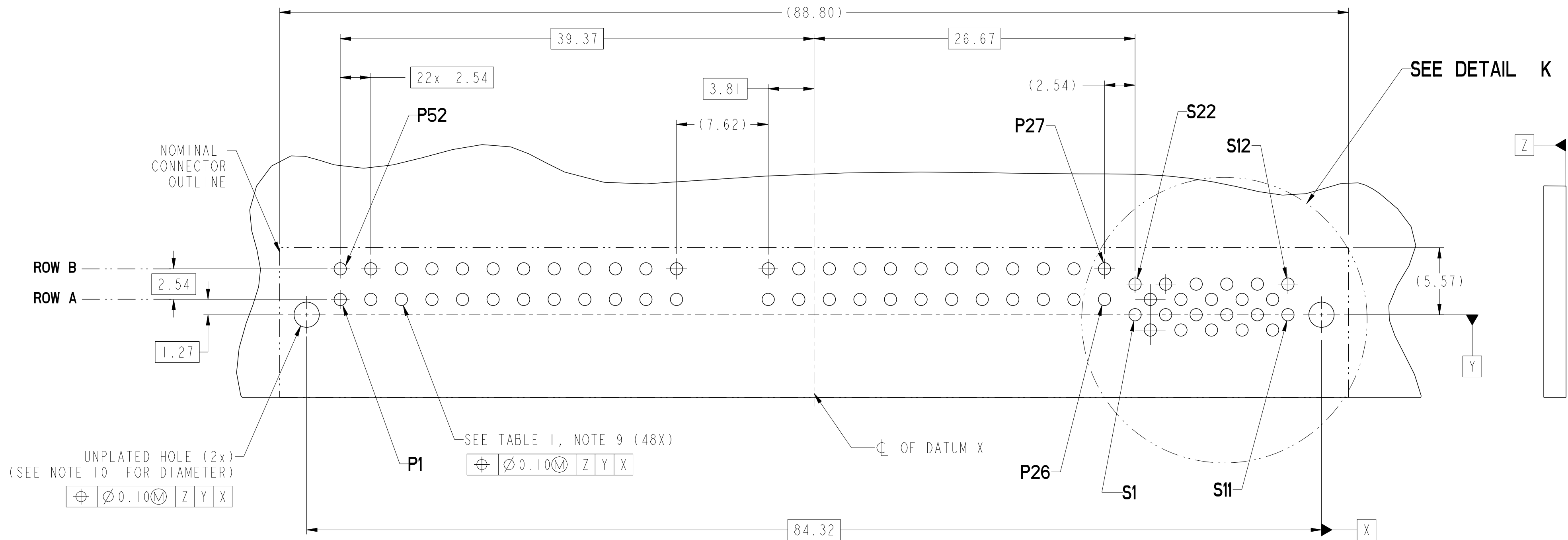
SECTION C-C

spec ref	-	dr	Eric Jiang	2013/05/24	projection	MM	size	A2	scale	4:1
tolerance std	ASME Y14.5	eng	Julia Wang	2013/06/21	chr	-	ecn no	-	rel level	Released
surface	✓	appr	Pei-Ming Zheng	2013/06/21	product family	HPCE	size	10125815	rev	A
ASME Y14.5	linear	angular	0°	±2°	www.fci.com	cat. no.	-	Product - Customer Drw	sheet 1 of 4	

PDS: Rev :A

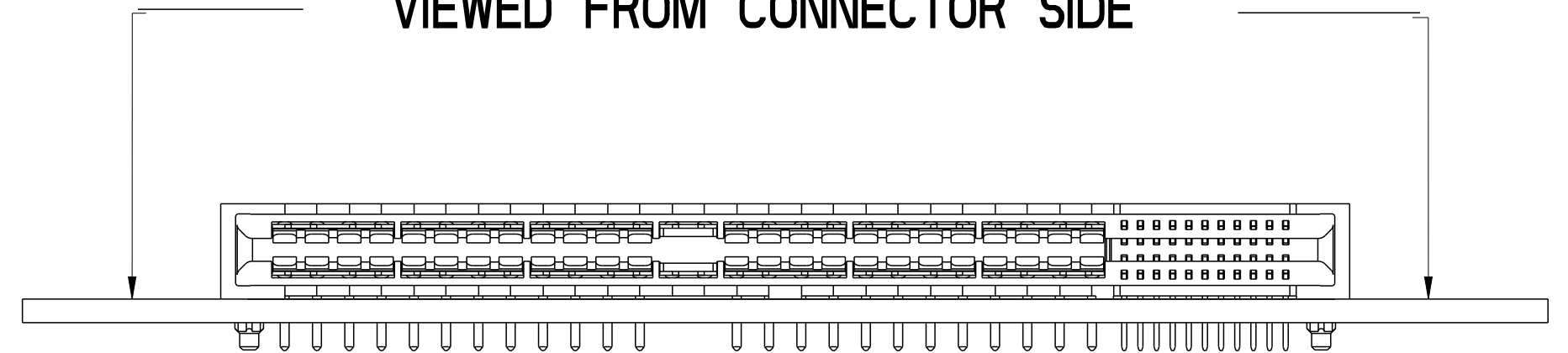
STATUS:Released

Printed: Jun 21, 2013



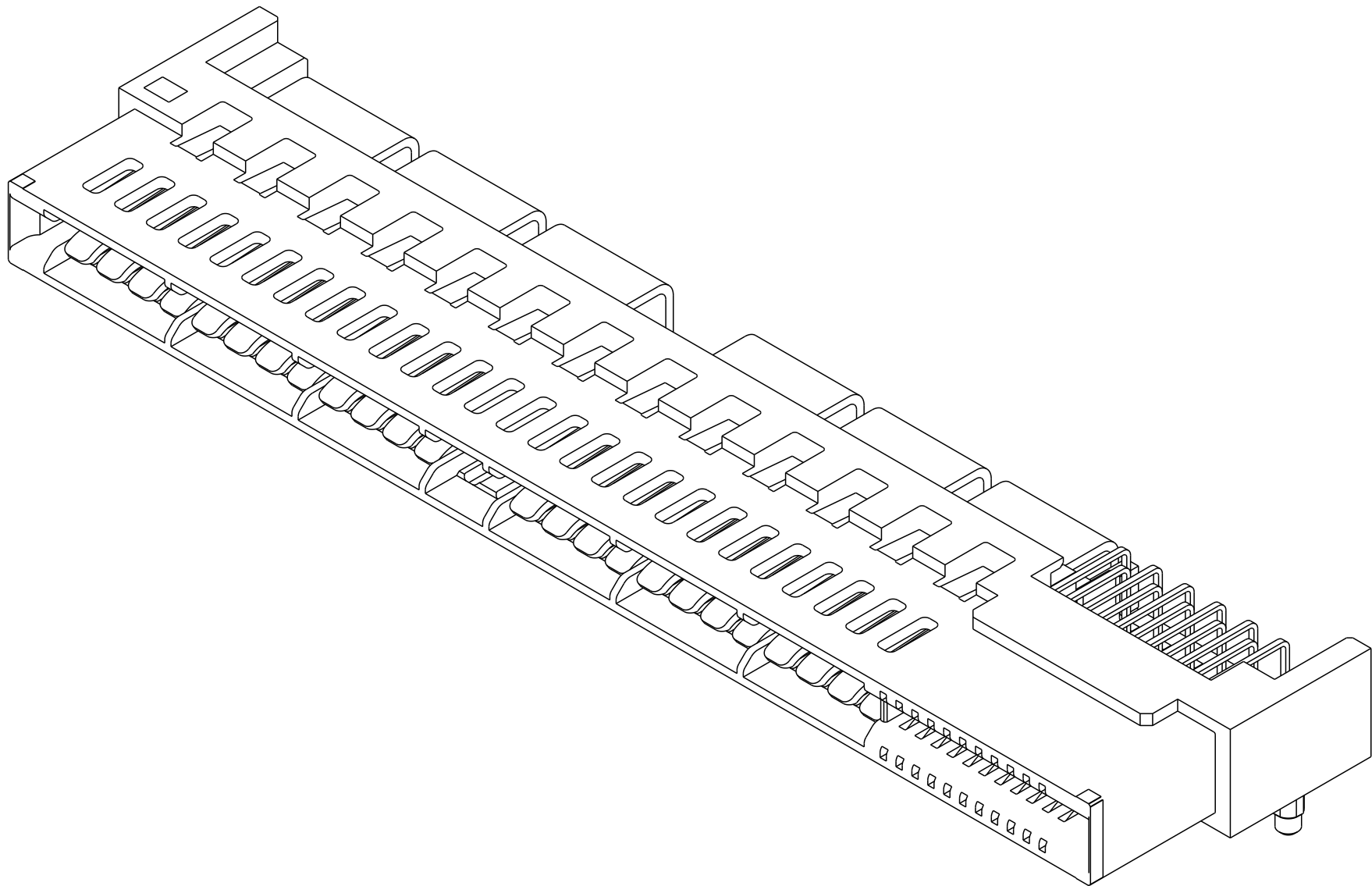
DETAIL K
SCALE 8:1

RECOMMENDED PCB LAYOUT VIEWED FROM CONNECTOR SIDE



spec ref	-	dr	Eric Jiang	2013/05/24	projection	MM	size	A2	scale	4:1
tolerance std	-	eng	Julia Wang	2013/06/21			ecn no rel level Released			title R/A RECEPT. ASM (52P-22S) HIGH POWER CARD EDGE cat. no. Product - Customer Drw sheet 2 of 4
ASME Y14.5	TOLERANCES UNLESS OTHERWISE SPECIFIED	chr	-	-						
surface	✓	appr	Pei-Ming Zheng	2013/06/21						
ASME Y14.5	linear	0.X	±0.50	0.XX	±0.25	0.XXX	±0.10	angular	0°	±2°

HPCE PART NUMBER (TABLE 2)			
PART NUMBER	TAIL TYPE	ORIENTATION KEY	DIM "A" TAIL LENGTH ±0.25
10125815-001LF	SOLDER TAIL	YES	3.25
10125815-002LF		NO	3.25
10125815-003LF		YES	2.60
10125815-004LF		NO	2.60



NOTES:

1. CONNECTOR MATERIALS:

HOUSING: HIGH TEMPERATURE THERMAL PLASTIC, BLACK
UL 94V-0 COMPLIANT
CONTACTS: HIGH PERFORMANCE COPPER ALLOY.
2. CONTACT FINISH REF. GS-12-604 SECTION 5.2.
3. PRODUCT SPECIFICATION: GS-12-604.
4. APPLICATION SPECIFICATION: GS-20-128.
5. PRODUCT MARKING (FCI - PART NUMBNER & DATE CODE) ON HOUSING IN AREA SHOWN.
6. PACKAGING MEETS FCI SPECIFICATION GS-14-937.
7. HOUSING COMPONENT WILL WITHSTAND EXPOSURE TO 260°C PEAK TEMPERATURE FOR 60 SECONDS IN A CONVECTION, INFRA-RED, OR VAPOR PHASE REFLOW OVEN.
8. COPPER PLATING THICKNESS IN CENTER OF VIA-HOLE CAN BE NO MORE THAN 0.003 LESS THAN OTHER AREAS.
9. ALL HOLE SIZES ARE FINISHED HOLE SIZES.
10. MOUNTING HOLES ARE UNPLATED
Ø 2.18 +/- 0.03 FOR SOLDER TAILS

spec ref -				dr Eric Jiang 2013/05/24		projection		MM		size A2		scale 4:1			
tolerance std -				eng Julia Wang 2013/06/21						ecn no -					
ASME Y14.5				chr -											
TOLERANCES UNLESS OTHERWISE SPECIFIED				appr Pei-Ming Zheng 2013/06/21											
						product family				HPCE					
						rel level								Released	
surface ✓		linear		0.X ±0.50				title		R/A RECEPT. ASM (52P-22S) HIGH POWER CARD EDGE		dwg no 10125815		rev A	
		0.XX ±0.25													
		0.XXX ±0.10													
ASME Y14.5		angular 0° ±2°		www.fci.com		cat. no. -		Product - Customer Drw				sheet 4 of 4			