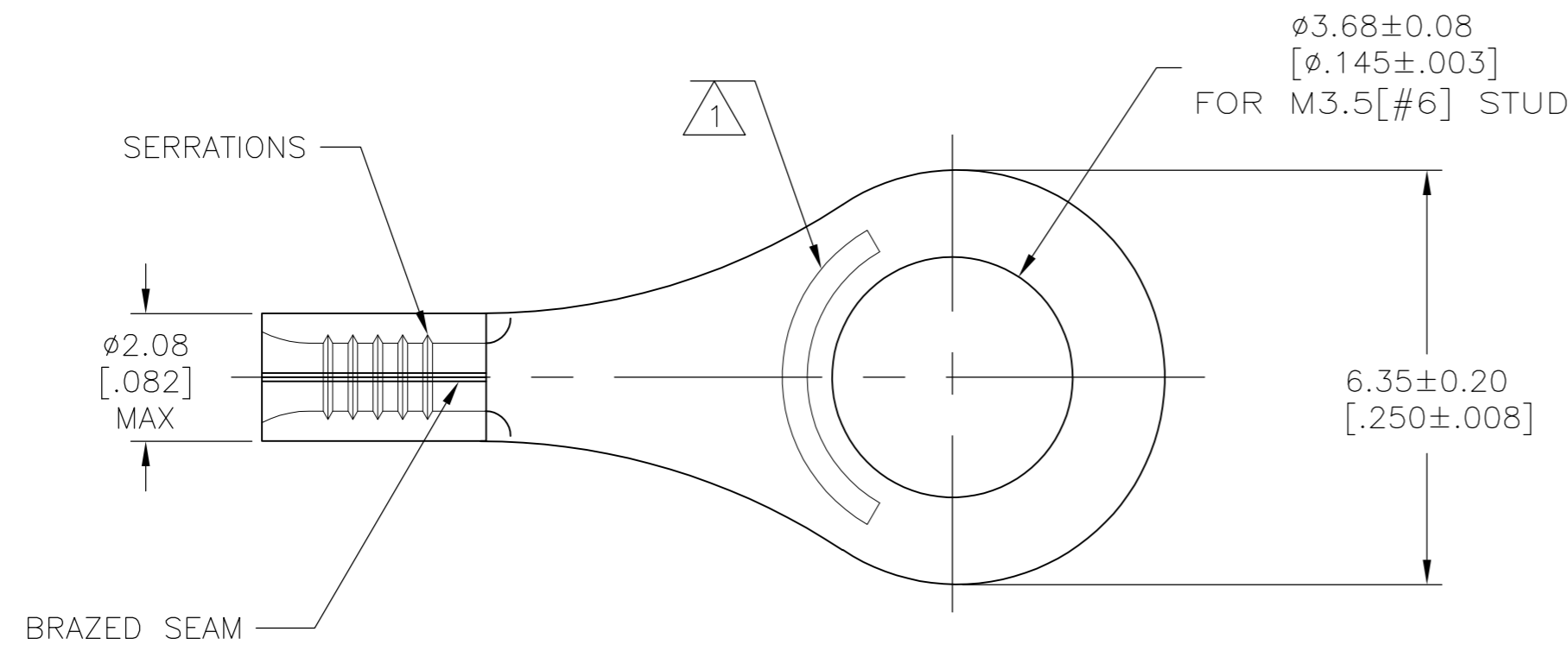


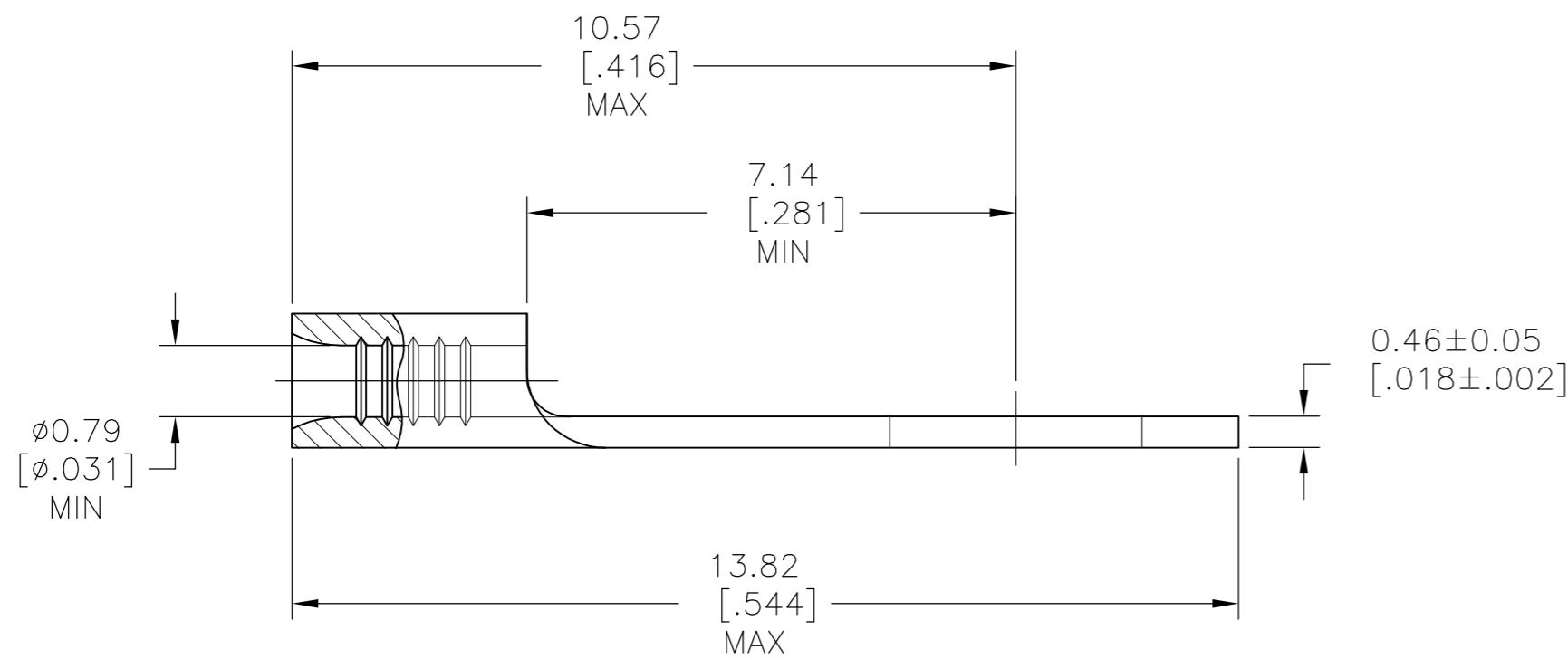
THIS DRAWING IS UNPUBLISHED. RELEASED FOR PUBLICATION  
 © COPYRIGHT - By - ALL RIGHTS RESERVED.

| LOC | DIST | REVISIONS   |                           |         |       |
|-----|------|-------------|---------------------------|---------|-------|
| P   | LTR  | DESCRIPTION | DATE                      | DWN     | APVD  |
| G   | 14   | D1          | REVISED PER ECO-12-001469 | 24JAN12 | KH DR |



**AMP**  
 WIRE RANGE  
 26-22 AWG  
 SOLID OR STRANDED

- 1 STAMP AMP APPROX AS SHOWN
- 2 COPPER PER ASTM B152, ANNEALED
- 3 TIN PLATE 0.00254 (0.000100) MIN EXT THK PER ASTM B545
- 4 GOLD PLATE 0.00127 (0.000050) MIN EXT THK PER ASTM B488 TYPE 1, CODE C OVER NICKEL PLATE 0.00127 [0.000050] MIN EXT THK PER SAE AMS QQ-N-290 OVER Cu FLASH PER SAE AMS 2418.
- 5 NOTE DELETED



| 1000     | 260° C                    | LOOSE PIECE    | 4      | 1-331401-2 |
|----------|---------------------------|----------------|--------|------------|
| 5000     | 170° C                    | 331401 ON TAPE | 3      | 1-331401-1 |
| 1000     | 170° C                    | LOOSE PIECE    | 3      | 331401     |
| QUANTITY | MAX OPERATING TEMPERATURE | PACKAGE TYPE   | FINISH | PART NO    |

**AMP INCORPORATED**  
**CUSTOMER SERVICE SYSTEMS**

MAX RECOMMENDED OPERATING TEMPERATURE: SEE TABLE

VOLTAGE RATING: NOT APPLICABLE

WIRE CROSS SECTIONAL AREA RANGE: 0.1-0.41mm<sup>2</sup> [202-810] CIR MILS SOLID OR STRANDED

THIS DRAWING IS A CONTROLLED DOCUMENT FOR AMP INCORPORATED. IT IS SUBJECT TO CHANGE AND THE CONTROLLING ENGINEERING ORGANIZATION SHOULD BE CONTACTED FOR THE LATEST REVISION.

|  |  |
|--|--|
| FOR ADDITIONAL PRODUCT INFORMATION OR COPIES OF DRAWINGS AND TECHNICAL DOCUMENTS | PRODUCT INFORMATION CENTER<br>1-800-522-6752 |
| FOR APPLICATION TOOLING INFORMATION  | TOOLING ASSISTANCE CENTER<br>1-800-722-1111  |
| FOR ORDER ENTRY  | 1-800-526-5142                               |

THIS DRAWING IS A CONTROLLED DOCUMENT.

|                         |  |                         |   |
|-------------------------|--|-------------------------|---|
| DIMENSIONS: mm [INCHES] | TOLERANCES UNLESS OTHERWISE SPECIFIED: | DWN TA BRINKMAN 3-9-93  | <b>TE</b> TE Connectivity               |
|                         | 0 PLC ± -                              | CHK DA PATTERSON 3-9-93 |   |
|                         | 1 PLC ± -                              | APVD DE MILLER 3-9-93   |   |
|                         | 2 PLC ± -                              | PRODUCT SPEC            |   |
|                         | 3 PLC ± -                              | APPLICATION SPEC        |   |
| MATERIAL                | FINISH                                 | WEIGHT                  | SIZE CAGE CODE DRAWING NO RESTRICTED TO |
| 2                       | SEE TABLE                              | -                       | A2 00779 C=331401 -                     |
| CUSTOMER DRAWING        |  |                         | SCALE 10:1 SHEET 1 OF 1 REV D1          |