

CHARACTERISTICS

ELECTRICAL:

LIFE: 100,000 CYCLES
 CIRCUIT: SINGLE POLE, 4 THROW, CENTER OFF
 MOMENTARY CONTACT (SELF RETURN TO CENTER OFF.)
 RATING: 1 AMP INDUCTIVE AT 28 VDC 100,000 CYCLES
 OVERLOAD: 2 AMP INDUCTIVE AT 28 VDC FOR 100 CYCLES
 DWV: 1050 VRMS

MECHANICAL:

LIFE: 100,000 CYCLES
 SWITCH ACTION SHALL BE SMOOTH, NO SNAP ACTION
 LEVER TRAVEL: 15° MAX. FROM CENTER OFF
 ACTUATING FORCE: 16±6 OZS.

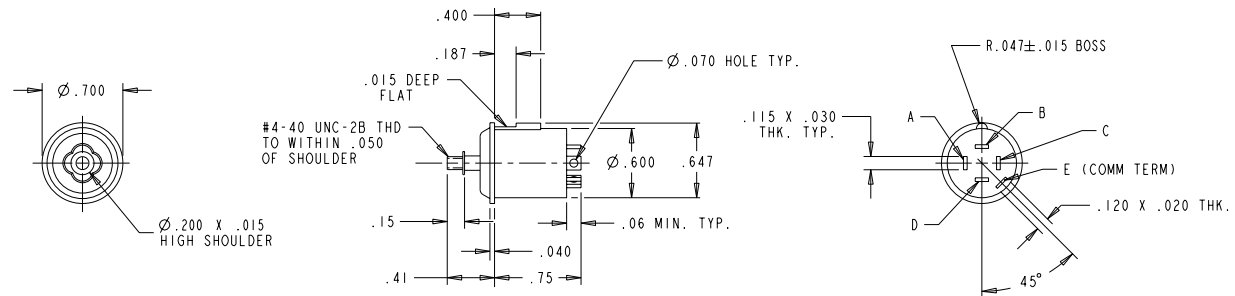
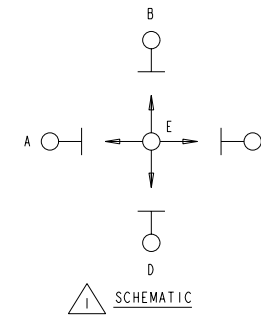
PHYSICAL:

HOUSING: BLACK RYTON
 BAT HANDLE: STAINLESS STEEL
 ENCLOSURE: DUSTTIGHT AND MEETS ENVIRONMENTAL
 TESTING OF MIL-S-9419
 TEMPERATURE RANGE: -30°C TO +71°C

MARKING: OTTO 21649 T4-0183
 TERMINAL IDENT.
 & DATE CODE (YYWW)

T4-0183

LET	OCN #	DATE	APR
A	000657	19 MAR 99	RAS



NOTE:

CONTACT MADE IN OPPOSITE DIRECTION OF LEVER TRAVEL.

UNLESS OTHERWISE SPECIFIED: DIMENSIONS ARE IN INCHES. TOLERANCES: .XX ±.03 .XXX ±.010 ANGLES ±2° DO NOT SCALE THIRD ANGLE PROJECTION 	OTTO CONTROLS DIVISION OF OTTO ENGINEERING INC. CARPENTERSVILLE, ILLINOIS USA		PART NAME #4-40 THREADED HANDLE SWITCH, 4-WAY TOGGLE				
	THIS DOCUMENT IS THE CONFIDENTIAL PROPERTY OF OTTO ENGINEERING, INC.. IT IS PROVIDED ON A RESTRICTED BASIS AND IS NOT TO BE USED IN ANY WAY DETRIMENTAL TO THE INTERESTS OF OTTO ENGINEERING, INC..		DRWN. RAS CHKD. TP APPD. ASC	SIZE B	FSCM NO 21649	DRAWING NO. T4-0183	REV. A
	DATE 19 MAR 99		WT.	SCALE 1:1		SHEET 1 OF 1	