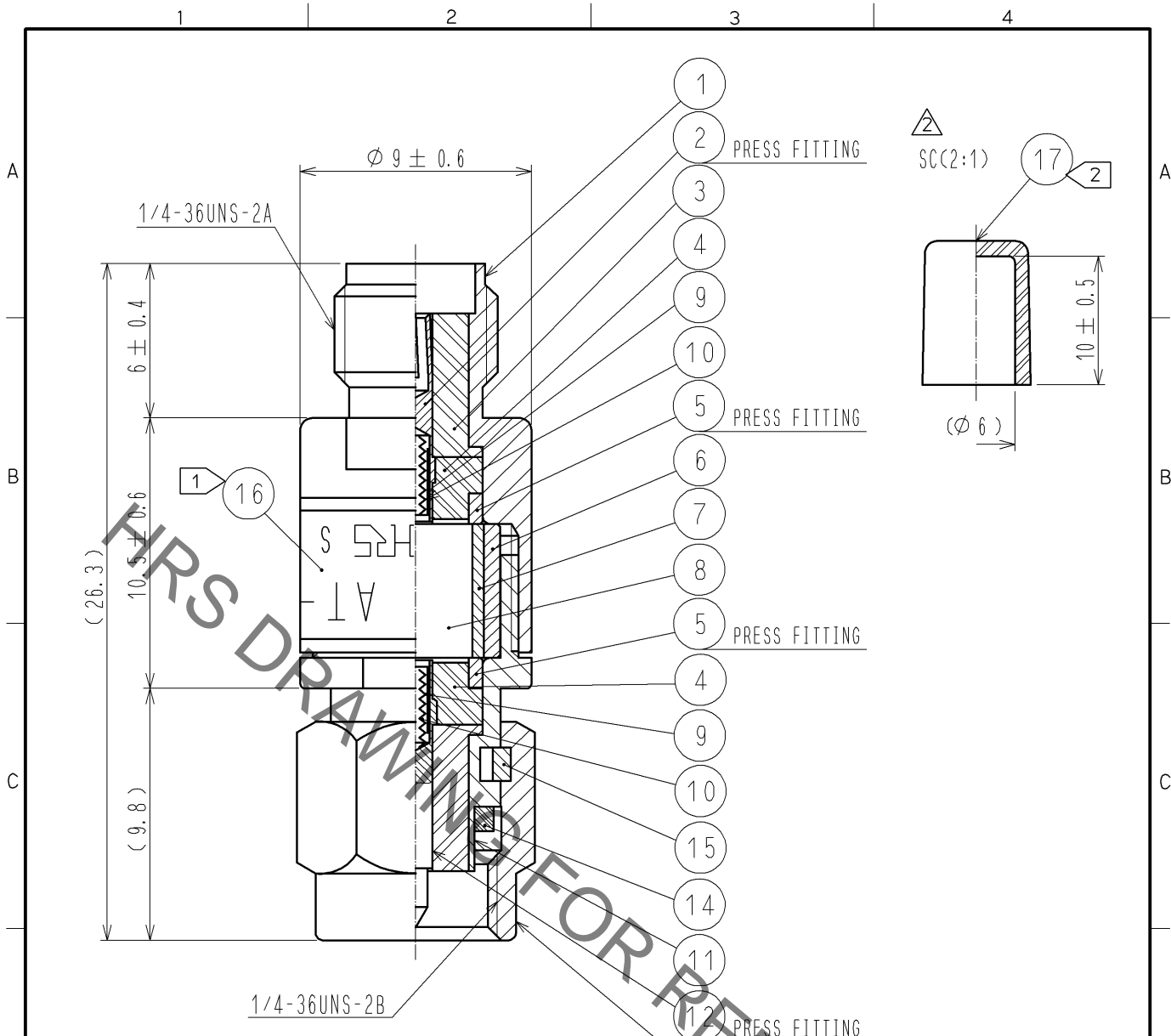


Jul.1.2019 Copyright 2019 HIROSE ELECTRIC CO., LTD. All Rights Reserved.
 In case of consideration for using Automotive equipment / device which demand high reliability, kindly contact our sales window correspondents.



NOTE 1 INDICATION OF THE LABEL.

- AT - 103V
- 3dB
- HRS
- S. NO.

2 Ref no. 17 is delivered with being attached to ref no. 1.

9	BERYLLIUM COPPER	GOLD PLATING					
8	ALUMINA		17	STYRENIC-BASED ELASTOMERS	NATURAL		
7	BERYLLIUM COPPER	GOLD PLATING	16		LABEL		
6	BRASS	NICKEL PLATING	15	BERYLLIUM COPPER	NICKEL PLATING		
5	BRASS	NICKEL PLATING	14	SILICON RUBBER			
4	PTFE		13	STAINLESS STEEL	PASSIVATED		
3	PTFE		12	BERYLLIUM COPPER	GOLD PLATING		
2	BERYLLIUM COPPER	GOLD PLATING	11	STAINLESS STEEL	PASSIVATED		
1	STAINLESS STEEL	PASSIVATED	10	PIANO WIRE			
NO.	MATERIAL	FINISH .	REMARKS	NO.	MATERIAL	FINISH .	REMARKS

UNITS	SYMBOL	SCALE	COUNT	DESCRIPTION OF REVISIONS	DESIGNED	CHECKED	DATE
mm		4 : 1	2	DIS-K-002989	TO. KATAYAMA	KY. SHIMIZU	13. 07. 03
HRS HIROSE ELECTRIC CO., LTD. APPROVED : MT. SHIBUTANI 11. 06. 27 CHECKED : KY. SHIMIZU 11. 06. 27 DESIGNED : TO. KATAYAMA 11. 06. 24 DRAWN : TO. KATAYAMA 11. 06. 24				DRAWING NO. EDC4-181115-00 PART NO. AT-103V CODE NO. CL354-0265-1-00			