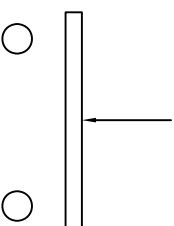
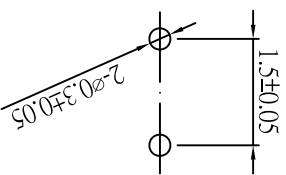


1. RATING : 3 V DC , 0.1 A .
2. CONTACT RESISTANCE : 150 m Ω MAX .
3. INSULATION RESISTANCE : 100V DC , 1 M Ω MIN .
4. OPERATING LIFE : 100,000 CYCLES .
5. OPERATING FORCE : 75 gf ~ 150 gf .
6. OPERATING TEMPERATURE : -20 $^{\circ}$ C ~ 70 $^{\circ}$ C .



P.C.B. LAYOUT

SCHEMATIC

△				DATA	2006/06/30	UNIT	mm	MODE	MP SERIES PUSH SWITCH
△				APPROVAL	FRANK	SCALE	1 : 1	PART	MP-A11A
△				CONFIRM	OWEN	VIEW	VIEW	2D FILE NAME	MP-A11A
DATA	APPROVAL	DESIGN	ENGINEERING CHANGE DESCRIPTION	DESIGN	KAVEN	VER.	01	3D FILE NAME	