

RACKS

24 Channel (In-Line)

FEATURES

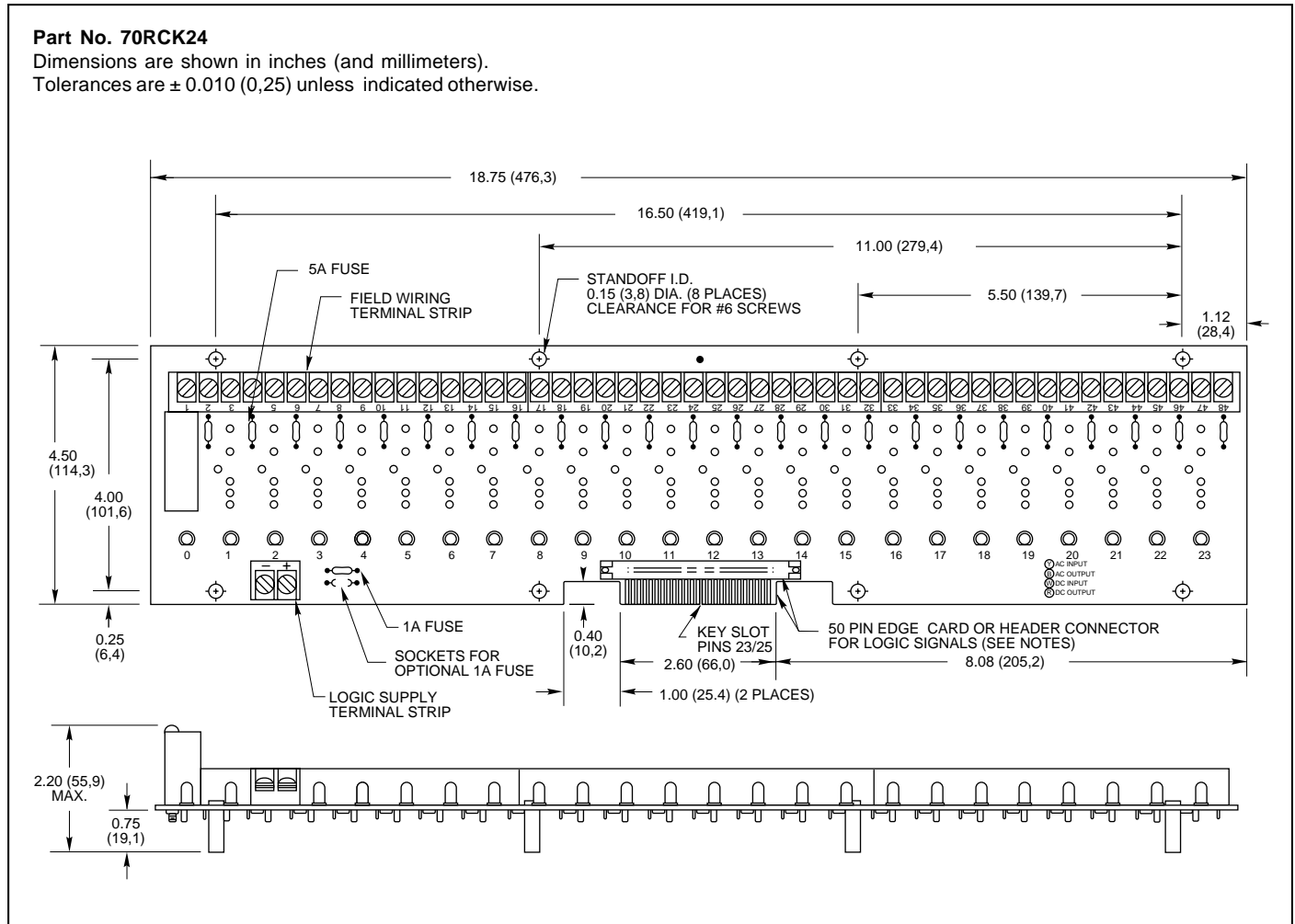
- For use with System 50 Style Controllers
- Available for Standard, Miniature, G5 and OpenLine® Modules (See p. L-4)
- UL, CSA Certified (see Engineering Information, p. L-3)



24 CHANNEL RACK: Standard

Part No. 70RCK24

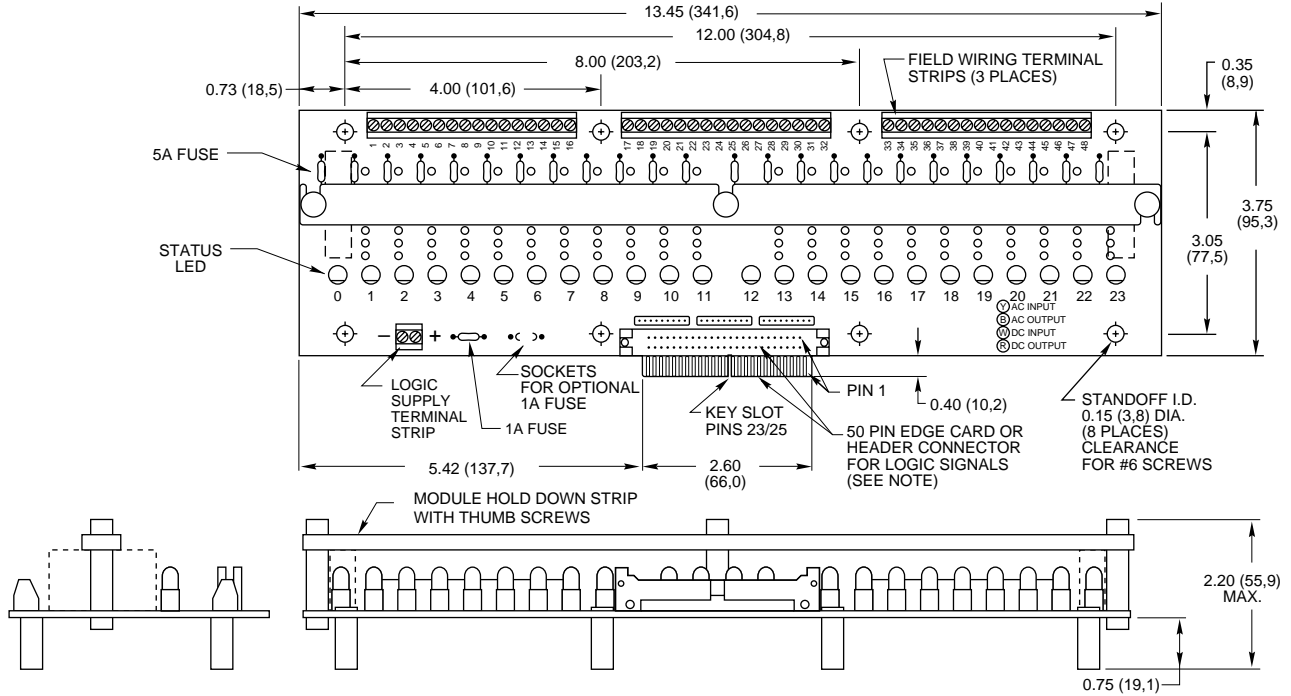
Dimensions are shown in inches (and millimeters).
Tolerances are ± 0.010 (0,25) unless indicated otherwise.



24 CHANNEL RACK: Miniature

Part No. 70MRCK24

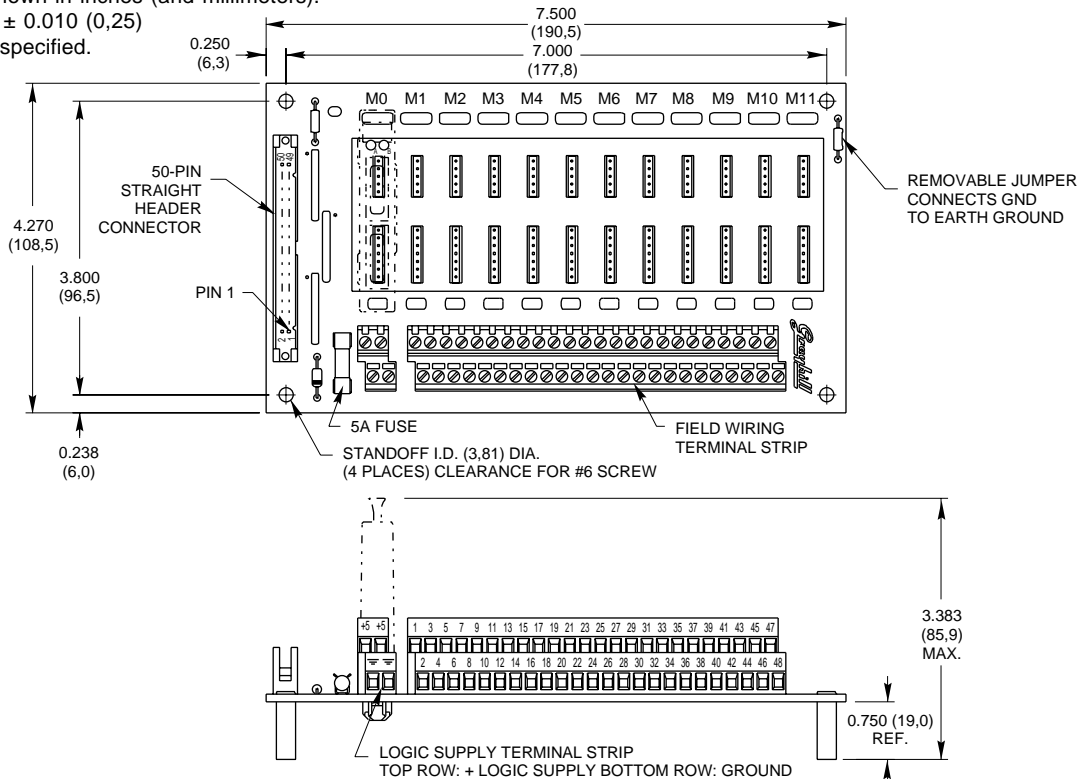
Dimensions are shown in inches (and millimeters).
All tolerances are ± 0.010 (0,25) unless otherwise specified.



24 CHANNEL RACK: OpenLine®

Part No. 70LRCK24

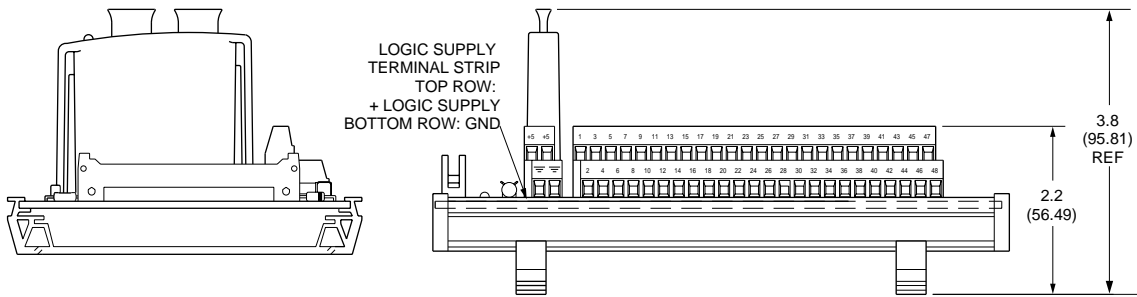
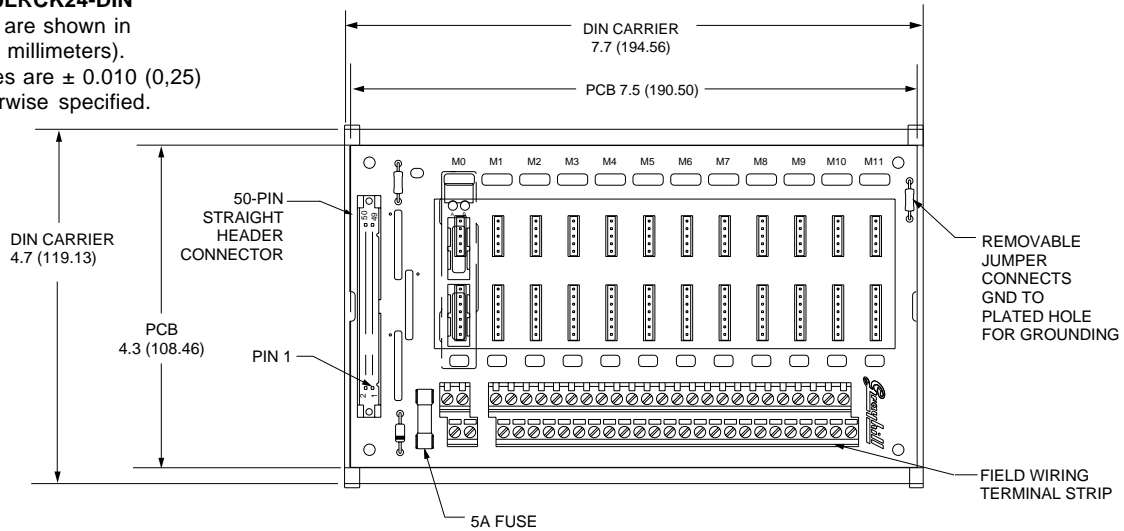
Dimensions are shown in inches (and millimeters).
All tolerances are ± 0.010 (0,25) unless otherwise specified.



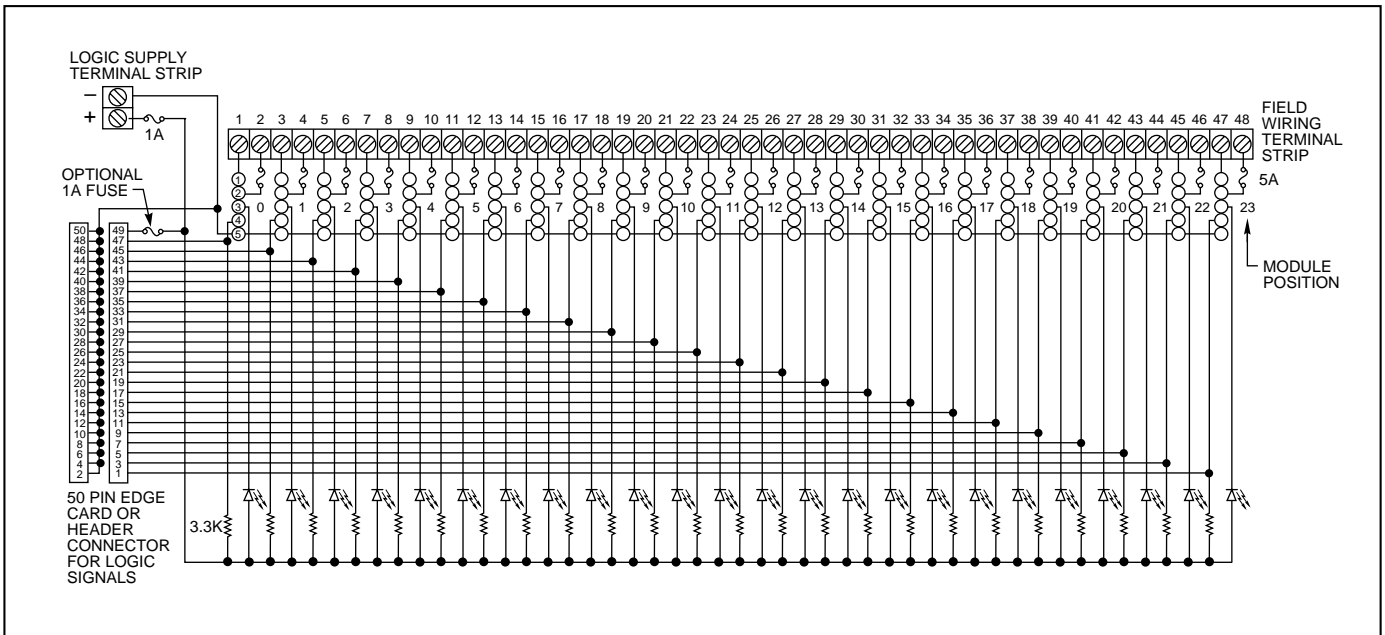
24 CHANNEL RACK: OpenLine® DIN Rail Mount for System 50

Part No. 70LRCK24-DIN

Dimensions are shown in inches (and millimeters).
All tolerances are ± 0.010 (0,25) unless otherwise specified.

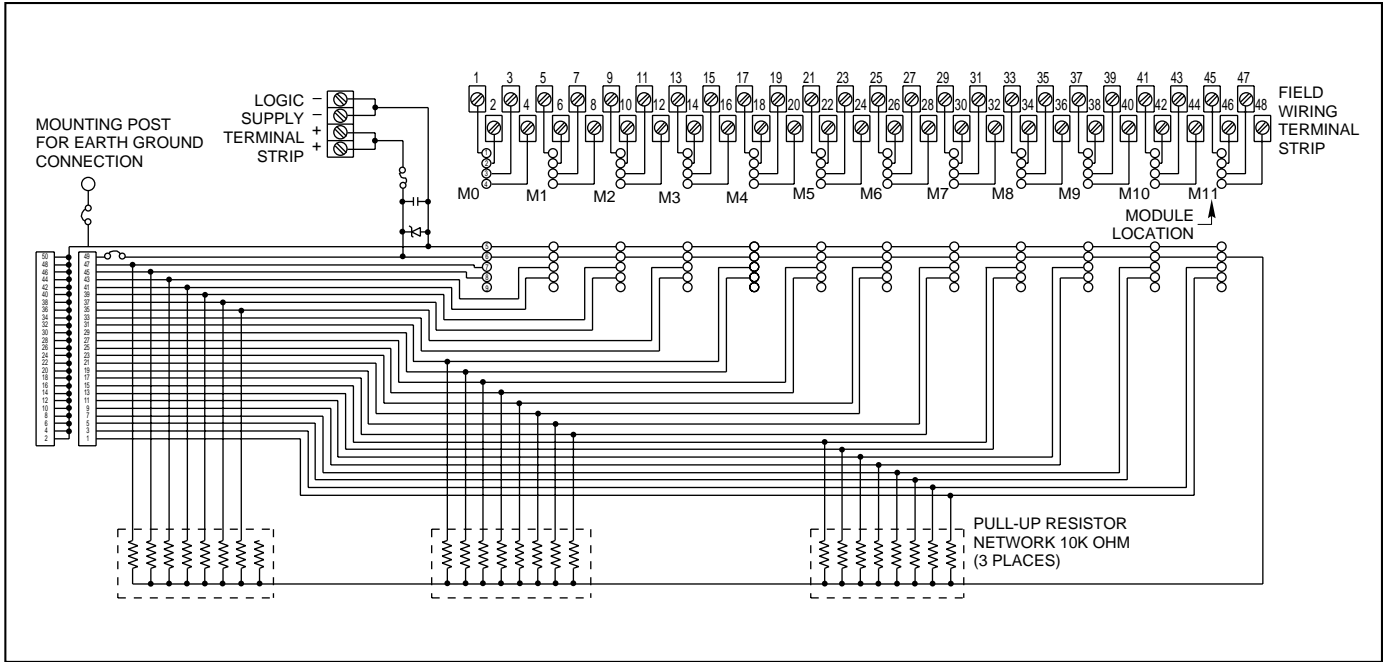


SCHEMATIC: Part Nos. 70RCK24 and 70MRCK24



System 50

SCHEMATIC: Part No. 70LRCK24



ORDERING INFORMATION (modules ordered separately)

Part Number	I/O	Description	UL	CSA	Style
70RCK24	24	Card edge	X	X	Standard
70RCK24-HL	24	50-pin header with ejector levers	X	X	Standard
70MRCK24-EC	24	Card edge	X	X	Mini
70MRCK24-HL	24	50-pin header with ejector levers	X	X	Mini
70LRCK24-HL	24	50-pin header with ejector levers	X	X	OpenLine®
70LRCK24-DIN	24	50-pin header, DIN rail mount	X	X	OpenLine®

SYSTEM 50 RACKS OVERVIEW

See page L-69.

Available from your local Grayhill Distributor. For prices and discounts, contact a local Sales Office, an authorized local Distributor, or Grayhill.