

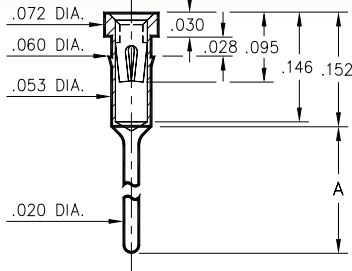
# PIN RECEPTACLES

FOR .015" - .025" DIAMETER PINS

## 1005/1013/8898

XXXX-0-15-XX-3X-XX-04-0

Press-fit in .057 mounting hole  
Annealed brass shell for auto-clinching \*



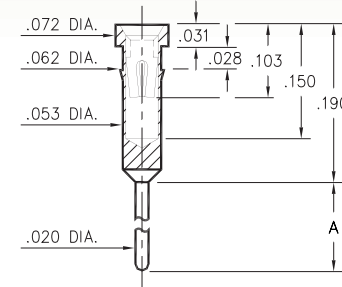
| Basic Part Number | Length A |
|-------------------|----------|
| 1005-0            | .138     |
| 1013-0            | .165     |
| 8898-0            | .224     |

\* NOTE: 8898 is not annealed & not suitable for auto-clinching

## 0145/0146

014X-0-15-XX-30-XX-04-0

Press-fit in .059 mounting hole

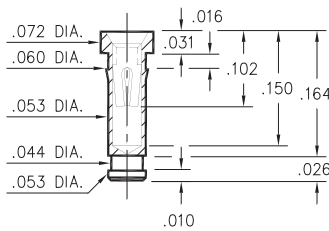


| Basic Part Number | Length A |
|-------------------|----------|
| 0145-0            | .300     |
| 0146-0            | .410     |

## 4378

4378-0-15-XX-30-XX-10-0

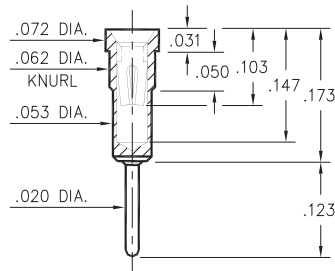
Press-fit in .057 mounting hole



## 0556

0556-0-15-XX-30-XX-04-0

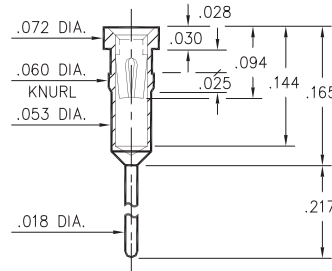
Press-fit in .059 mounting hole



## 1103

1103-0-15-XX-30-XX-04-0

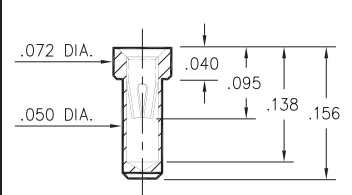
Press-fit in .057 mounting hole



## 9234

9234-0-15-XX-30-XX-10-0

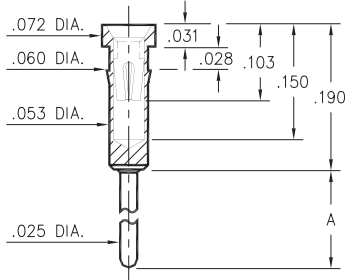
Solder mount in .052 min. mounting hole



## 0136/37/38/39/41/48/52

01XX-0-15-XX-30-XX-04-0

Press-fit in .057 mounting hole

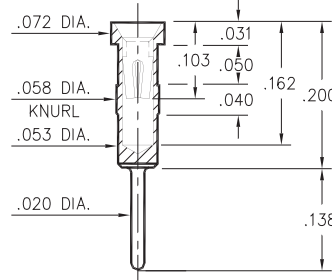


| Basic Part Number | Length A |
|-------------------|----------|
| 0136-0            | 1.215    |
| 0137-0            | .560     |
| 0138-0            | .210     |
| 0139-0            | .635     |
| 0141-0            | .700     |
| 0148-0            | .455     |
| 0152-0            | .410     |

## 0447

0447-0-15-XX-30-XX-04-0

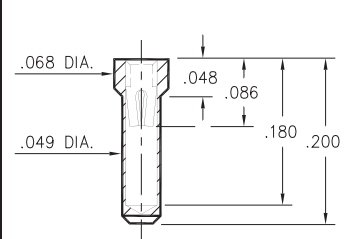
Press-fit in .056 mounting hole



## 5660

5660-0-15-XX-30-XX-10-0

Solder mount in .051 min. mounting hole



### SPECIFICATIONS:

**Shell Material:** Brass Alloy 360, 1/2 Hard

**Contact Material:** Beryllium Copper Alloy 172, HT

**Dimensions:** Inches

**Tolerances On:** Lengths: ±.005

Diameters: ±.002

Angles: ±2°



**ORDER CODE:** XXXX - X - 15 - XX - XX - XX - XX - 0

**BASIC PART #**

**SPECIFY SHELL FINISH:**

- 01 200 μ" TIN/LEAD OVER NICKEL
- ◆ 80 200 μ" TIN OVER NICKEL (RoHS)
- ◆ 15 10 μ" GOLD OVER NICKEL (RoHS)

**SPECIFY CONTACT FINISH:**

- 02 100 μ" TIN/LEAD OVER NICKEL
- ◆ 84 100 μ" TIN OVER NICKEL (RoHS)
- ◆ 27 30 μ" GOLD OVER NICKEL (RoHS)

**SELECT CONTACT:**

**#30 or #32 CONTACT (DATA ON PAGE 253)**

(For alternate contact choices, see groups B and C on page 248)

